



In2p3



# LCG-France Project Status

---

Fabio Hernandez  
Frédérique Chollet  
Fairouz Malek

Réunion Sites LCG-France  
Grenoble, November 27<sup>th</sup>-28<sup>th</sup> 2008

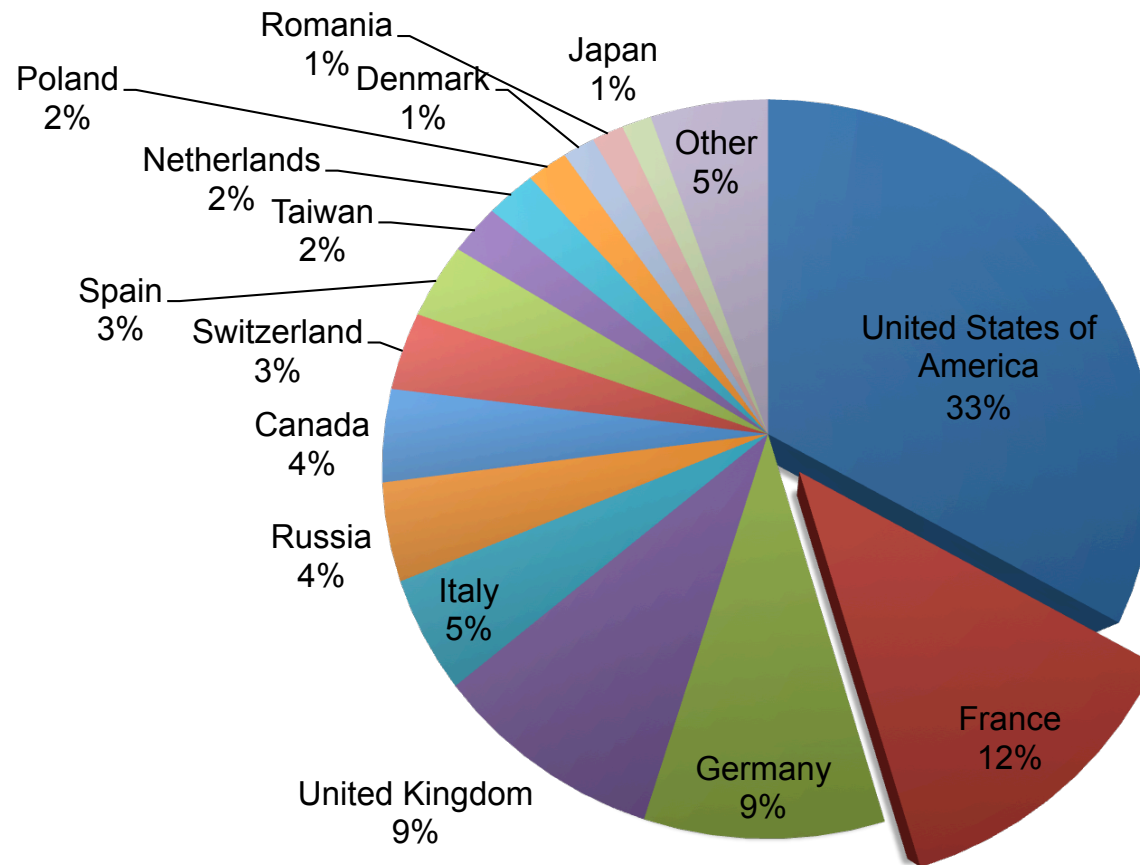


# Contents

- LCG-France contribution to WLCG
- Ongoing work
- Progress since last meeting
- Questions

# Actual contribution: CPU All sites

**CPU contribution per country**  
*All LHC VOs - January-November 2008*

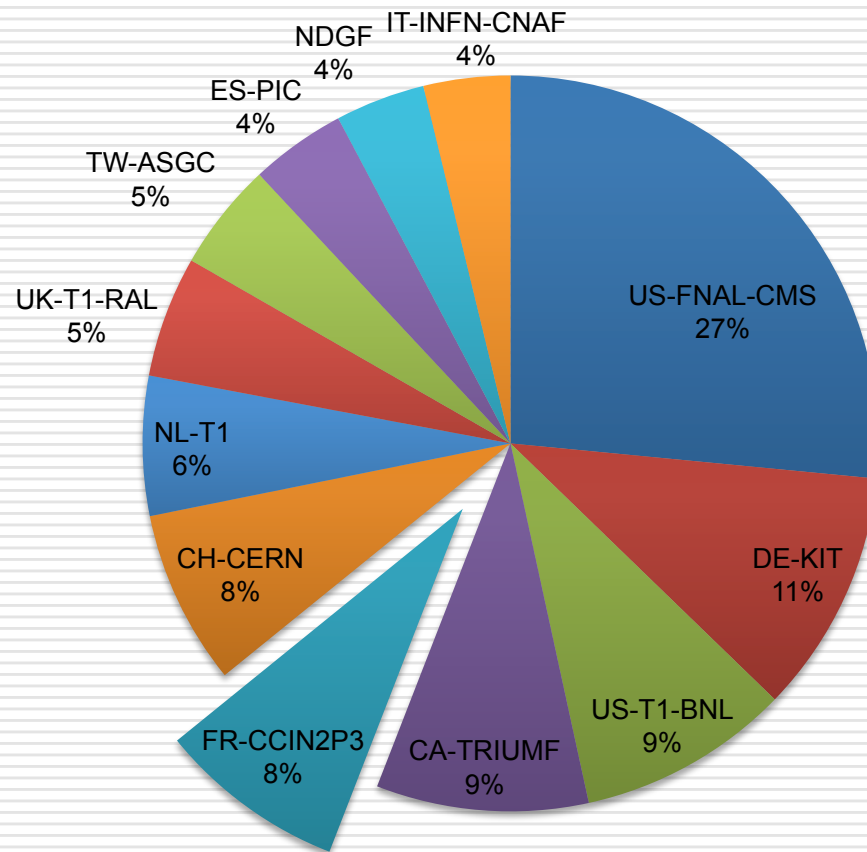


43 countries  
contribute  
CPU to the  
LHC  
experiments

Source: [EGEE Accounting Portal](#)

# Actual contribution: CPU tier-1s

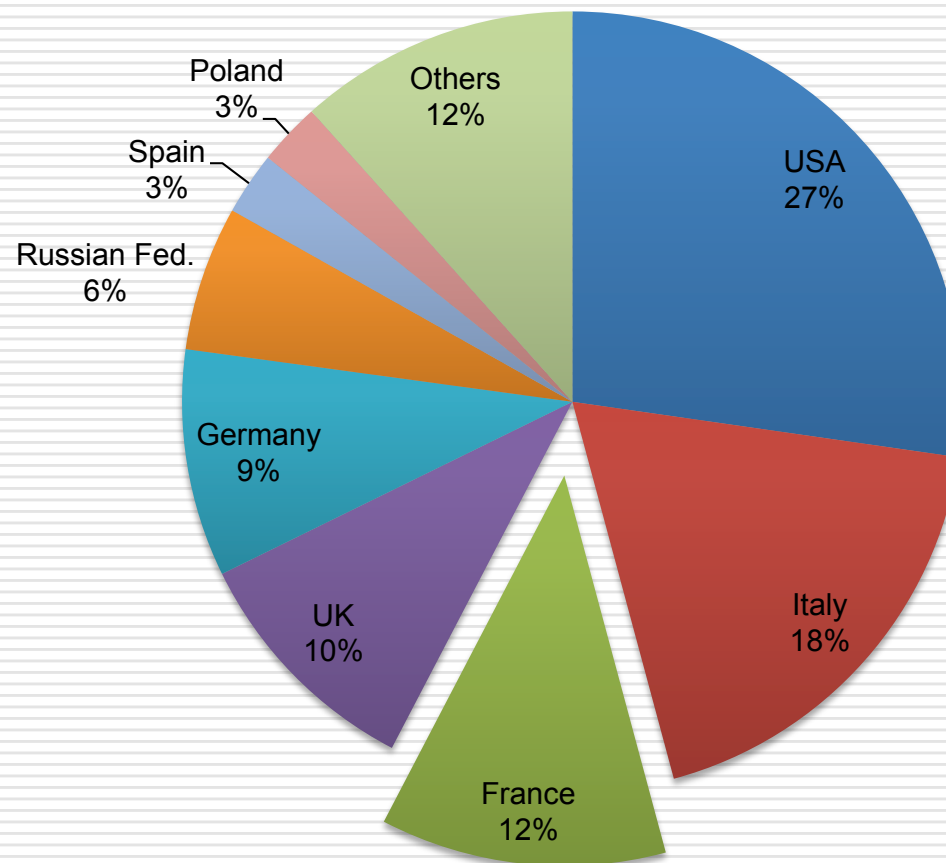
**CPU contribution by tier-1s**  
*All LHC experiments - Jan.2008-Nov.2008*



Source: [EGEE Accounting Portal](#)

# Actual contribution CPU Tier-2s

**CPU contribution by tier-2s**  
*All LHC experiments - Jan.2008-Nov.2008*



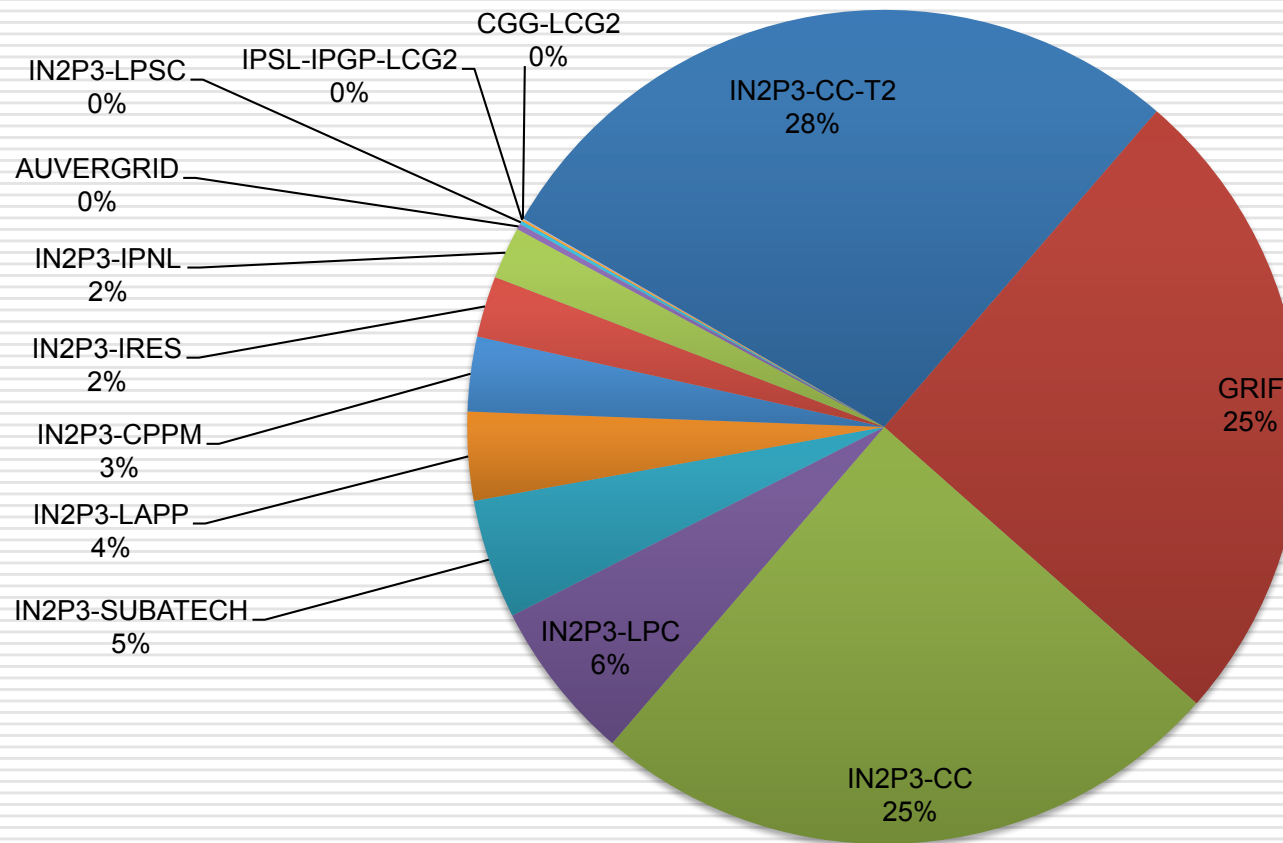
Contribution  
by tier-3s  
not included

Source: [EGEE Accounting Portal](#)

# Actual contribution: CPU All sites (cont.)

## CPU contribution by site (France)

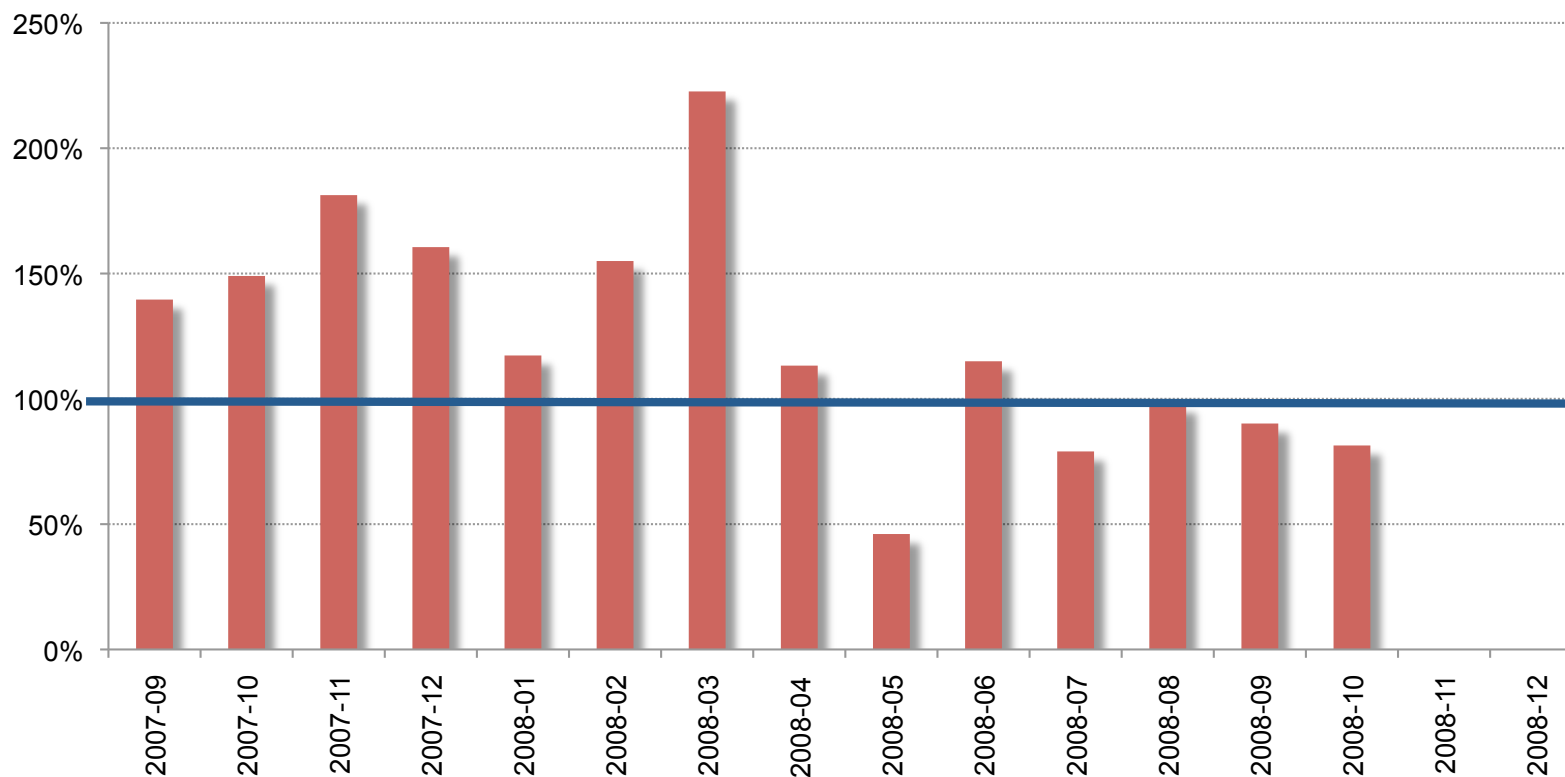
All LHC experiments - Jan.2008-Nov.2008



Source: [EGEE Accounting Portal](#)

# Actual contribution: CPU

LCG-France tier-2s  
Delivered CPU [% of pledged]

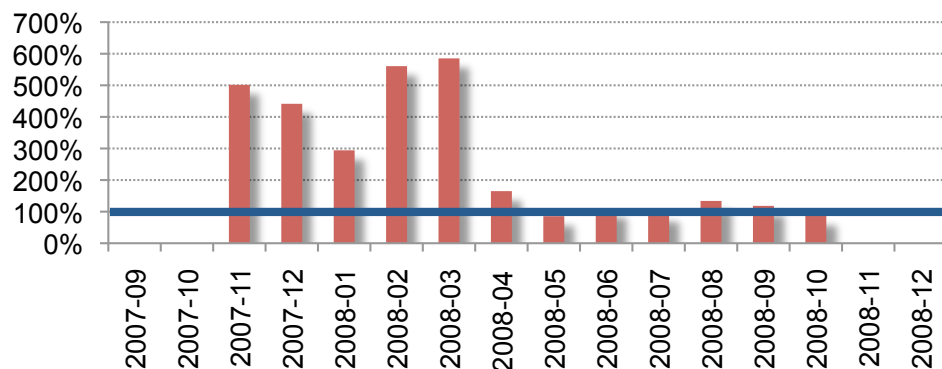


Source: [WLCG Tier-2 accounting reports](#)

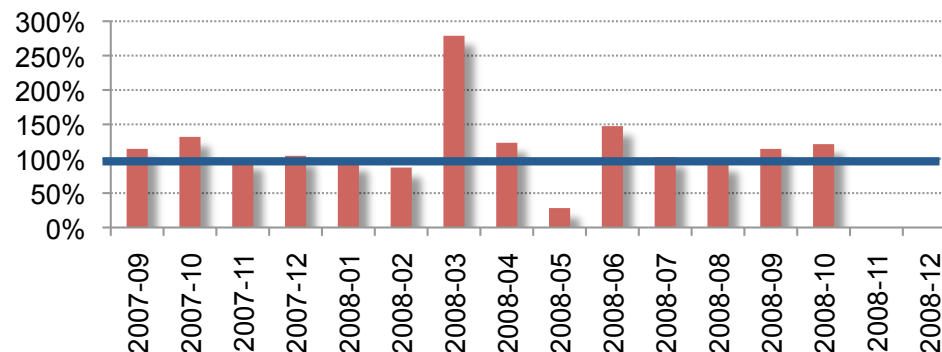


# Actual contribution: CPU (cont.)

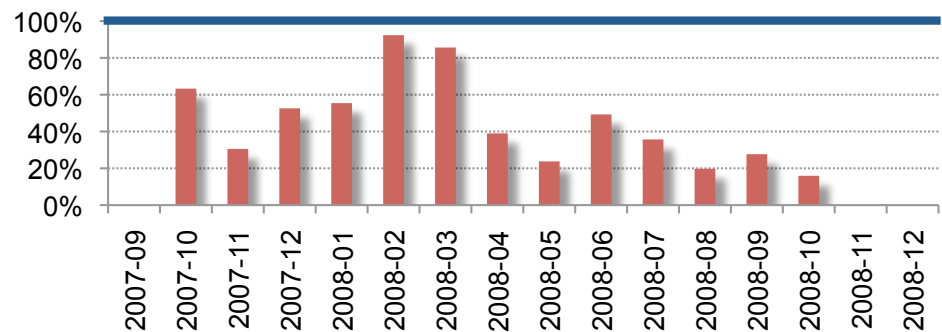
**FR-IN2P3-CC-T2**  
Delivered CPU [% pledged]



**FR-GRIF**  
Delivered CPU [% pledged]



**FR-IN2P3-LAPP**  
Delivered CPU [% pledged]



Delivered CPU  
as a % of  
pledge

*Note: different  
scales in Y-axis*

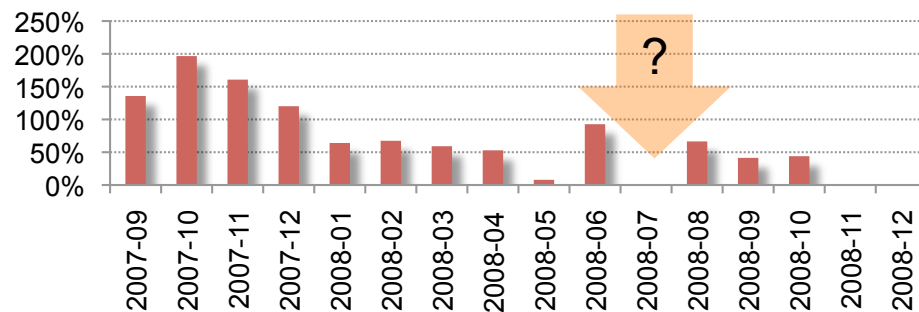
Source: [WLCG Tier-2 accounting reports](#)





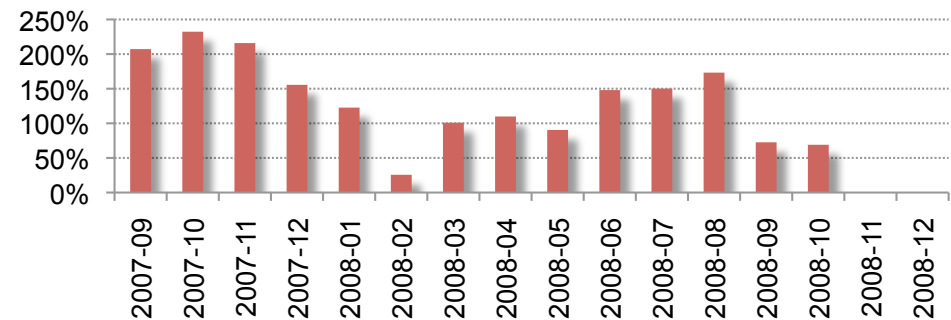
# Actual contribution: CPU (cont.)

**FR-IN2P3-LPC**  
Delivered CPU [% pledged]



Do sites have tools to verify published information on resource usage?

**FR-IN2P3-SUBATECH**  
Delivered CPU [% pledged]



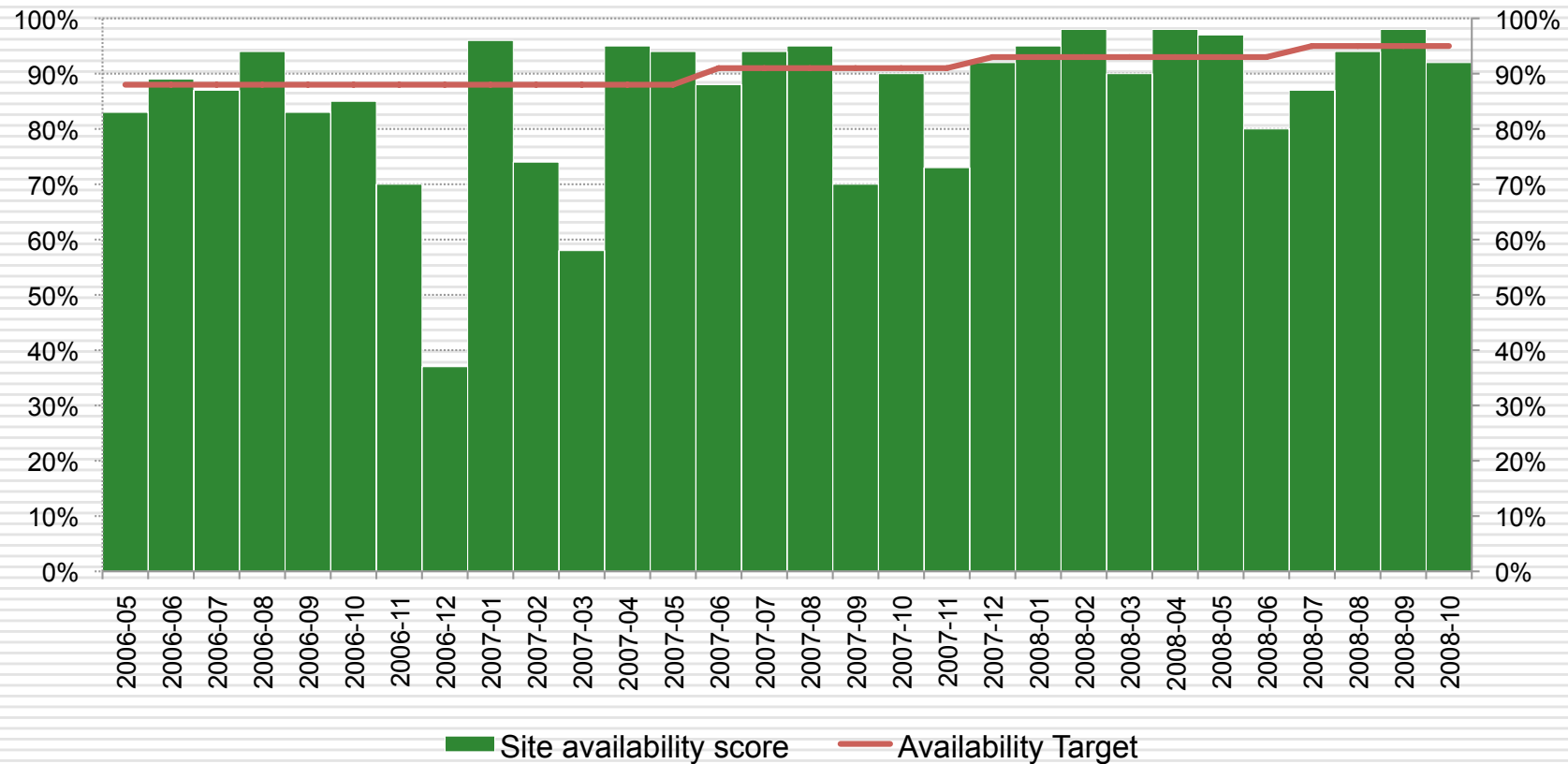
Delivered CPU as a % of pledge

Source: [WLCG Tier-2 accounting reports](#)



# Tier-1 Availability

CC-IN2P3 Tier-1: monthly availability score  
(VO OPS)

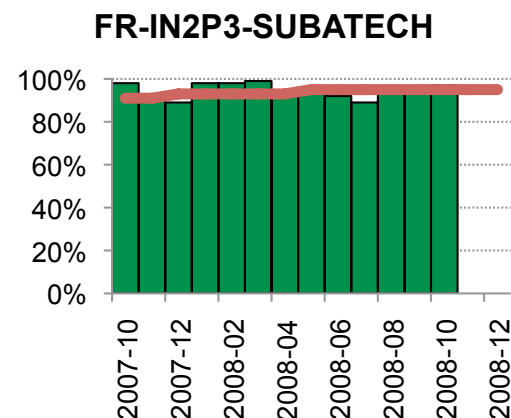
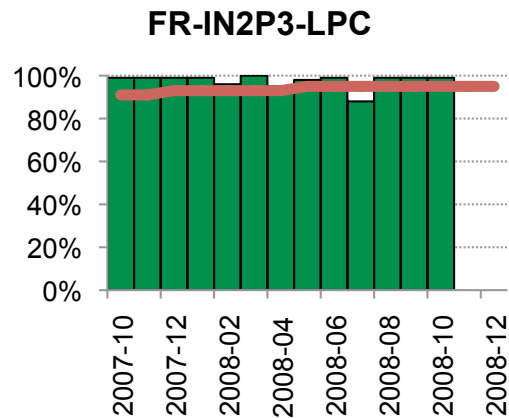
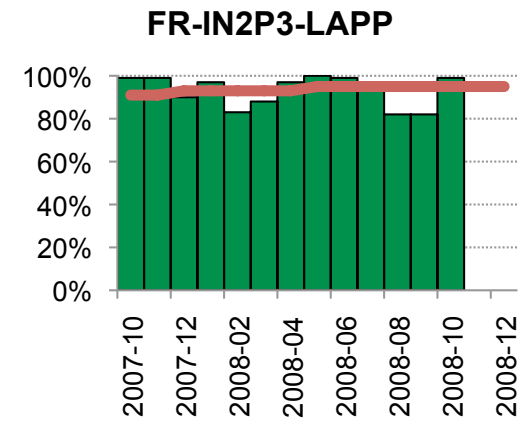
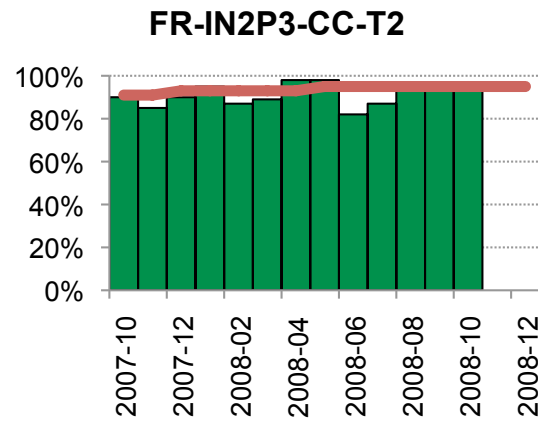
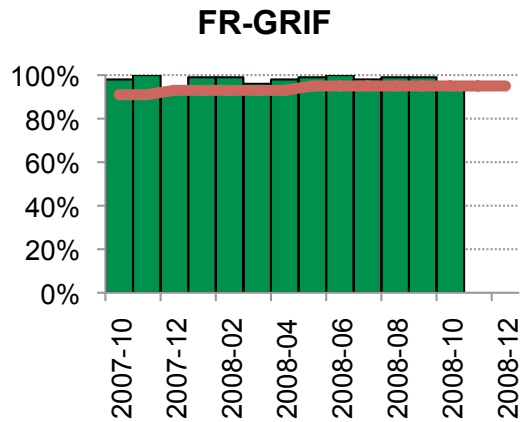


Source: [WLCG Reliability Reports](#)



# Tier-2 Availability

Source: [WLCG Reliability Reports](#)



# Tier-1: procurement

- **Two additional robotic libraries**
  - +20.000 slots, +30 tape drives
  - Ordered enough tape cartridges for satisfying requests during 2009Q1
- **Disk servers to honour 2008 pledges and roughly half of the needs for 2009**
  - +3.4 PB delivered and installed to be put in production on demand
- **CPU servers: call for tender in the final phase**
  - Delivered expected early 2009

# SL4 64bits deployment status

Sites	OS	i686		x86_64
AUVERGRID	SL3 ?	40%		60%
CGG-LGC2	SL3 ?	100%		0%
ESRF	NA	NA		NA
GRIF	SL3 (lal, ipno, apce) ?	IRFU	26%	74%
		LLR	0%	100%
		IPNO	0%	100%
IBCP-GBIO	SL4	100%		0%
IN2P3-CC	SL4	20%		80%
IN2P3-CC-T2	SL4	20%		80%
IN2P3-CPPM	SL4	0%		100%
IN2P3-IPNL	SL4	100% (30%)		0%
IN2P3-IRES (IPHC)	SL4	0%		100%
IN2P3-LAPP	SL4	0%		100%
IN2P3-LPC	SL3 ?	40%		60%
IN2P3-LPSC	SL4	100%		0%
IN2P3-SUBATECH	SL4	100%		0%
IPSL-IPGP-LCG2	SL4	100%		0%
MSFG	NA	NA		NA
SN-UCAD	SL4	100%		0%

Source: Pierre Girard

# SL4 64bits deployment status (cont.)

- Incorrect publishing of CE platform
  - Attribute `GlueHostArchitecturePlatformType` in site information system
- No value
  - `lpsec-ce.in2p3.fr`
  - `cirigridce01.univ-bpclermont.fr`
  - `iut15auvergridce01.univ-bpclermont.fr`
  - `iut43auvergridce01.univ-bpclermont.fr`
  - `obsauvergridce01.univ-bpclermont.fr`

# SL4 64bits deployment status (cont.)

- **Strange value:** dW5zZXQg
  - apcce01.in2p3.fr
  - grid10.lal.in2p3.fr
  - grid63.lal.in2p3.fr
  - gridce.cci.ucad.sn
  - ipngrid12.in2p3.fr
  - ipnls2001.in2p3.fr
  - lapp-ce01.in2p3.fr
  - lpnce.in2p3.fr
  - marce01.in2p3.fr
  - node07.datagrid.cea.fr
  - node16.datagrid.cea.fr
  - polgrid1.in2p3.fr
  - sbgce1.in2p3.fr

Is this related to the usage of Quattor?

# Noteworthy facts

- Connectivity improvements
  - Both at the LAN (tier-1) and WAN levels
  - See Jérôme's talk
- Agreement on funding model by LCG-France for tier-2s and tier-3s
  - Details this afternoon
- WLCG Overview Board
  - Improved representation of tier-2s: Michel Jouvain represents tier-2s associated to a tier-1
- Introduction of a new tier-2 (IPHC) and a new tier-3 (LPSC)
- Improved visibility of LCG-France within the WLCG community
- Strengthen links with associated foreign tier-2s



# Ongoing work

- Understand requirements and prototype solutions for end-user data analysis
- Identify and tests site-oriented monitoring tools
- Generalization of VO-specific SAM tests
  - VO-specific reliability and availability metrics based on those tests
- Modification of the unit for benchmarking CPU
  - Based on SPEC CPP 2006

# Ongoing work (cont.)

- Monitoring working group

- Mandate

- ♦ collecter les **besoins** des responsables des sites et de services de la région
- ♦ recenser les **pratiques** des sites et les outils de monitoring utilisés
- ♦ **représenter** et défendre les intérêts de la région dans les différents groupes de travail existants au sein de WLCG-EGEE sur un sujet connexe
- ♦ identifier les **standards** qui doivent être suivis ainsi que les outils pertinents à tous les niveaux (services, site et région), proposer aux responsables des sites, des services grid et de l'opération régionale de la grille EGEE un ensemble d'outils répondant à leurs besoins,
- ♦ proposer, si besoin, des **améliorations sur les outils** et procédures d'alertes au niveau des sites, au niveau de la région
- ♦ établir, s'il y a lieu, un **plan** pour la poursuite de ses travaux au-delà de la période initiale des 6 premiers mois.

- Details

- ♦ [https://edms.in2p3.fr/file/l-013168/2/LCG-France-SA1-FR\\_WGMonitoring.pdf](https://edms.in2p3.fr/file/l-013168/2/LCG-France-SA1-FR_WGMonitoring.pdf)

# Ongoing work (cont.)

- Accounting working group

- Mandate

- ♦ réunir les informations et de suivre les travaux en cours concernant l'*accounting* au sein de WLCG-EGEE, notamment la mise en place de l'*accounting* des ressources de stockage,
- ♦ identifier les besoins, recenser les pratiques coordonner les initiatives des sites français permettant **d'assurer le suivi de l'utilisation des ressources**,
- ♦ proposer aux sites et au coordinateur des opérations au niveau régional des **moyens de vérification des informations publiées** et des statistiques d'usage établies globalement dans le cadre EGEE/WLCG,
- ♦ proposer des **améliorations portant sur les outils, services et procédures** au niveau des sites ou de la région (mise en place d'un outil d'*accounting* local à chaque site, consolidation service *accounting*, établissement de statistiques d'usage régionales...).

- Details:

- ♦ [https://edms.in2p3.fr/file/l-013702/1/LCG-France-SA1-FR\\_WGAccounting.pdf](https://edms.in2p3.fr/file/l-013702/1/LCG-France-SA1-FR_WGAccounting.pdf)

# Ongoing work (cont.)

- **Middleware deployment**
  - FTS on SL4
  - CREAM-based computing element
  - WMS to completely replace resource brokers
  - Deployment of SL5 on worker nodes
  - Glxec & SCAS to support multi-user pilot jobs with identity changing
  - DPM v1.7
- **Operations**
  - Publishing of installed capacity (CPU and storage) information via the site information system
  - CPU usage per user
  - Operations model for LCG-France (see H el ene's talk tomorrow)

# Ongoing work (cont.)

- Recall of data on tape at tier-1
  - Fix problems unveiled by CMS, Atlas and LHCb exercises
  - Improve interaction between dCache and HPSS
  - Collect appropriate information for monitoring the behavior of the storage components (dCache and HPSS)

# Progress since last meeting

- Project management

Done

- Finalize model for equipment budget for all sites
- Regularly collect and consolidate data on installed capacity for LCG-France sites

Ongoing

- Consolidation of the grid infrastructure services

- How many instances of every grid service do we need? Where to deploy them to maximize availability for all supported VOs?
  - ◆ Work to be performed in strong interaction with EGEE-FR operations

Ongoing

- Monitoring of the (site and regional) grid infrastructure

Ongoing

- Tools for site-level accounting (CPU and storage)

# Progress since last meeting ( cont.)

- Ramp-up

Done

- Participation to the second phase of CCRC (May)

Starting

- Make sure we all (sites and experiments) understand what infrastructure is needed for analysis activities

# More Information

- LCG-France website <http://lcg.in2p3.fr>



# Questions

