

# Transformation System

Federico Stagni

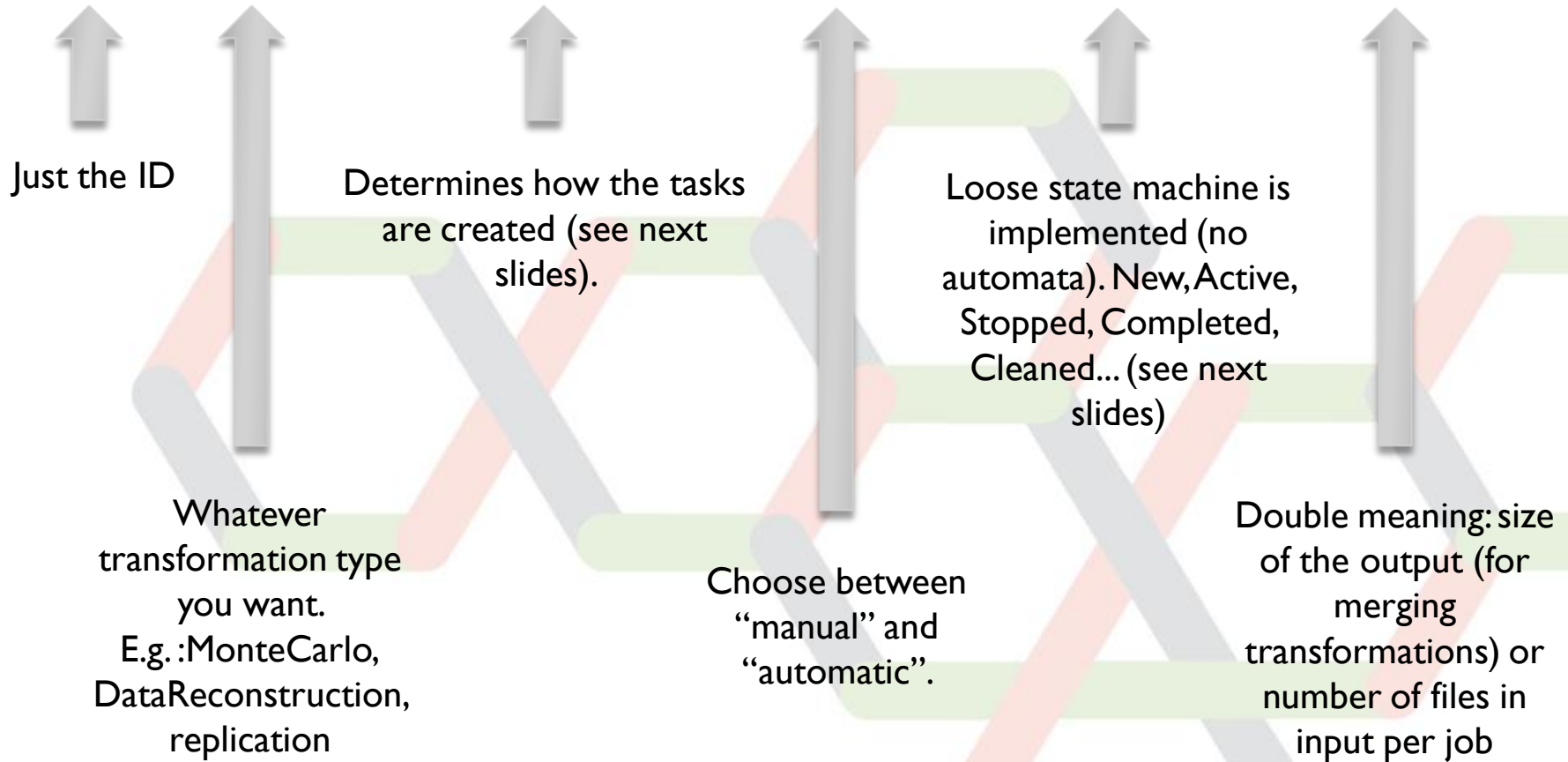


- ▶ A DIRAC system, as usually comprising:
  - ▶ MySQL tables
  - ▶ DIRAC Services
  - ▶ DIRAC Agents
  - ▶ Clients
  - ▶ Scripts
  - ▶ A set of **Plugins**
- ▶ Used for “repetitive” work
  - ▶ Can be used for different workflows:
    - ▶ Productions (MC, reconstructions, etc...)
    - ▶ Data management (Data replication, deletion, etc...)
- ▶ In LHCb we built our Production system on it (see presentation tomorrow morning)

1. A new **transformation** is created (typed)
2. There are (or there aren't) **input** files (e.g: MC, reconstruction, replication)
3. Each transformation has a **plugin** (e.g.: ByReplica, BySize, Broadcast)
4. **Tasks** are created based on the specified plugin (e.g.: task including a number of inputs, or )
5. Tasks are treated by an **external system** (e.g: WMS, DMS)

# 1: Transformation

ID	Type	Plugin	AgentType	Status	GroupSize
----	------	--------	-----------	--------	-----------



- Each Transformation can have a number of input files
  - E.g.: Data Reconstruction transformations

TransfID	FileID	Status	ErrorCount	TaskID
----------	--------	--------	------------	--------



Unique FileID +  
TransfID. FileID  
associated to an  
LFN

Number of times  
the file failed to  
be processed

“Unused”: ready to be  
“Assigned” to a task.  
“Processed”: the task succeeded.

TaskID processing the File  
(no history)

- ▶ **Standard():**
  - ▶ Group files by replicas (tasks create based on the file location)
- ▶ **BySize():**
  - ▶ Group files until they reach a certain size (Input size in Gb)
- ▶ **ByShare()**
  - ▶ Group files given the share (specified in the CS) and location

For replication:

- ▶ **Broadcast()**
  - ▶ Takes files at the source SE and broadcast to a given number of locations

## 4: Tasks, 5: External system

Tasks are treated by an external system:

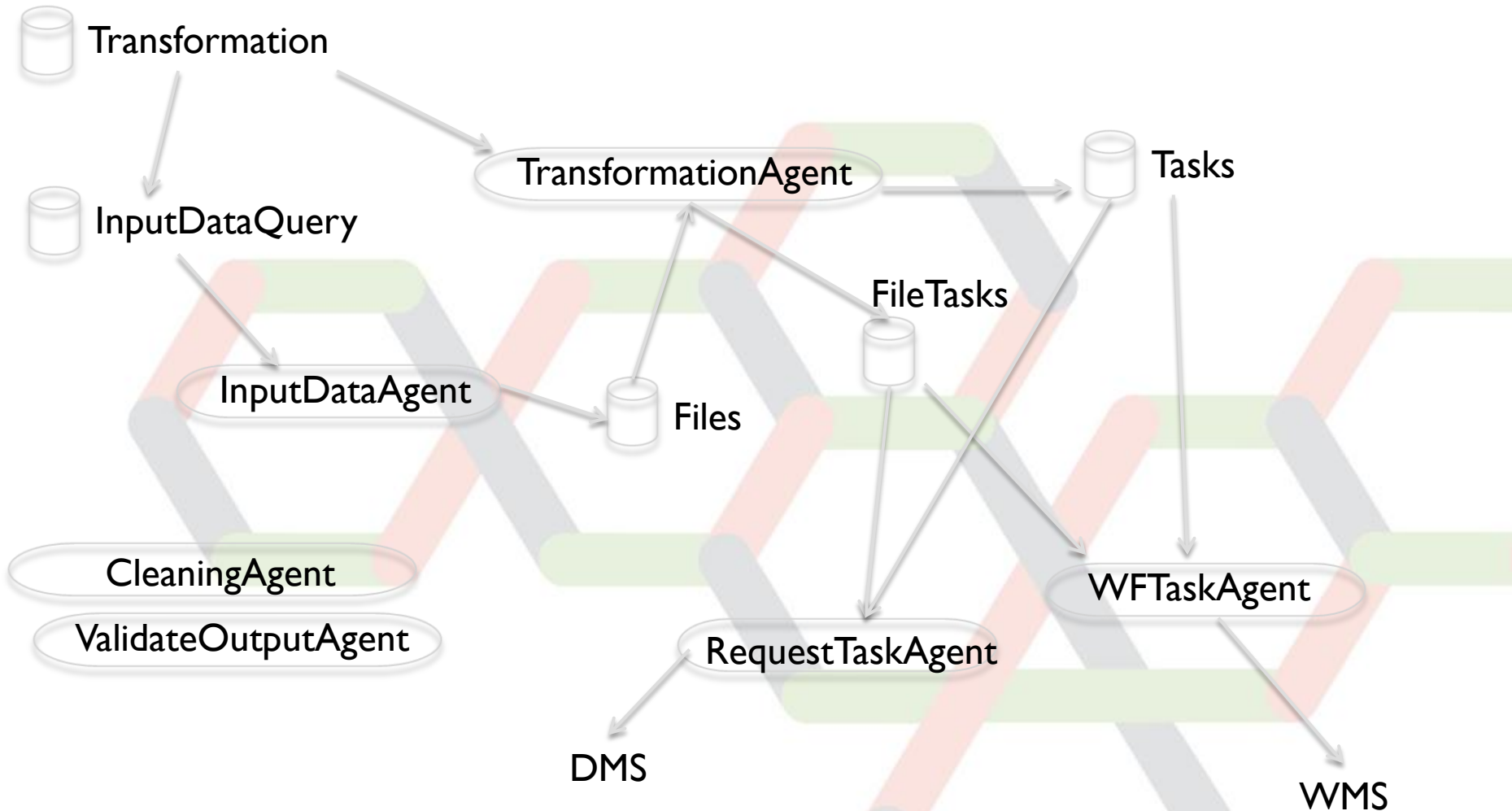
- WMS (all but replication and removal transformations)
- DMS (replication and removal transformations)

TransfID	TaskID	ExternalID	ExternalStatus
----------	--------	------------	----------------

Combination of  
Transformation  
ID and Task ID is  
unique

External system  
ID (e.g. WMS job  
ID)

External system  
status (e.g. “Done”,  
“Failed”, ...)





- ▶ The TransformationAgent creates the tasks
  - ▶ For all the transformation types, or the ones configured
  - ▶ Version in v6r5 not really scalable (good for tests)
    - ▶ Version in v6r6 is a porting from LHCbDirac one
- ▶ The WorkflowTaskAgent submits production tasks to the WMS
- ▶ The RequestTaskAgent submits data management tasks to the DMS (using the RMS)

- ▶ **TaskManager.py:**
  - ▶ Contains classes wrapping the logic of how to “transform” a task in a job/request
- ▶ **TransformationClient.py:**
  - ▶ Main client to the service/DB
    - ▶ Recently adapted for “big” productions
- ▶ **Transformation.py**
  - ▶ For Data Management transformations
- ▶ **TransformationCLI.py:**
  - ▶ A CLI for manipulations of the DB

Data View Web Selected setup: LHCb-Production

☒ Select All ☐ Select None Start Stop Flush Complete Clean

ID	Status	AgentT...	Type	Name	Files	Processed (%)	Created	Submitted	Waiting	Running	Done	Completed	Failed	Stalled	Creation
17833	Active	Automatic	Replication	ReplicationForProd17832-RequestSim05aTrig0x40760037Flagg...	0	0	0	0	0	0	0	0	0	0	2012-+
17832	Active	Automatic	Merge	Request_7795_allstreams.dstMerging_Sim05aTrig0x40760037FI...	0	0	0	0	0	0	0	0	0	0	2012-+
17831	Active	Automatic	MCSimulation	Request_7795_MC_Beam3500GeV-2011-MagUp-Nu2-EmNoCuts...	0	-	330	330	0	329	0	0	1 (+1)	0 (-1)	2012-+

**Request 7794**

17830	Active	Automatic	Replication	ReplicationForProd17829-RequestSim05aTrig0x40760037Flagg...	0	0	0	0	0	0	0	0	0	0	2012-+
17829	Active	Automatic	Merge	Request_7794_allstreams.dstMerging_Sim05aTrig0x40760037FI...	0	0	0	0	0	0	0	0	0	0	2012-+
17828	Active	Automatic	MCSimulation	Request_7794_MC_Beam3500GeV-2011-MagUp-Nu2-EmNoCuts...	0	-	330	330	0	327	0	0	3	0	2012-+

**Request 7793**

17807	Active	Automatic	Merge	FMDST_Merging_Request7793_CaloFemtoDST_90000000_1.xml	2	0.0	11	11	0	0	0	0	11	0	2012-+
17806	Active	Automatic	DataStripping	STRIPPING_Request7793_CaloFemtoDST_90000000_1.xml	0	100.0	2	2	0	0	2	0	0	0	2012-+

**Request 7791**

**Request 7790**

17804	Active	Automatic	Merge	PID.MDST_Merging_Re...											2012-+
17803	Active	Automatic	Merge	ICHEP.DST_Merging_Re...											2012-+
17802	Active	Automatic	Merge	CALIBRATION.DST_Mer...											2012-+

**Production: 17802**

Name	Value
DataQualityFlag	OK,UNCHECKED
FileType	CALIBRATION.DST
ProductionID	17801

**Production: 17795**

Name	Value
BKPaths	MC/MC 11a/Beam3500GeV-2011-MagUp-Nu2-EmNoCuts/Sim0
BKProcessingPass	('Step0': ('ApplicationName': 'LHCb', 'ExtraPackages': 'AppCo
BKQueryID	8740
CondDBTag	
DDDBTag	
DQTag	
DerivedProduction	0
DetailedInfo	Merge Production 17795 for event type 13144020 has follow
JobType	Merge
OutputDirectories	/lhcb/MC/MC 11a/LOG/00017795 /lhcb/debug/MC 11a/ALLSTR
OutputFNs	('LogTargetPath': ['/lhcb/MC/MC 11a/LOG/00017795/9999/000
Priority	8
RequestID	7745
SizeGroup	5
configName	MC
configVersion	MC 11a
eventType	13144020

**Run status for production: 17804**

RunNumber	Status	SelectedSite	Files	Processed (%)			
113146	Active	CNAF-DST	234	64.1	0	0	2012-+
113145	Flush	CNAF-DST	78	100	1	0	2012-+
113142	Active		72	0	0	0	2012-+
113141	Active		113	0	26 (+1)	0	2012-+
113140	Active	GRIDKA-DST	445	67.4			
113139	Active		66	0	168	55	2012-+
113138	Active	IN2P3-DST	193	77.7	0	0	2012-+
113137	Active	CERN-DST	150	0			
113136	Active	GRIDKA-DST	152	0	0	0	2012-+
113135	Active		59	0	0	0	2012-+
113133	Active	GRIDKA-DST	151	99.3	50	1	2012-+
113132	Active		16	0	0	0	2012-+
113130	Active		84	0	0	0	2012-+
113129	Active		33	0	59	0	2012-+
113126	Active		12	0	0	0	2012-+
113125	Active		31	0	0	0	2012-+
113124	Active		5	0	48	0	2012-+
113123	Active		24	0	0	0	2012-+
113121	Active		9	0	0	0	2012-+
113105	Active		30	0	49	0	2012-+

Page 1 of 2 Refresh Auto: Disabled Updated: 2012-04-26 15:27 [UTC] Items per page: 200 Displaying 1- 200 of 341

# What you might want to extend

---

- ▶ For Data Management
  - ▶ Nowhere
- ▶ For pure MC:
  - ▶ Nowhere
- ▶ For DataManipulation productions
  - ▶ Most probably some parts
    - ▶ Especially if you have an external Catalog (e.g. Bookkeeping)
      - E.g.: where to get the list of input files?
      - See LHCb presentation tomorrow

