



HammerCloud suite

E. Vamvakopoulos
CAF meeting– CCIN2P3
19 July 2012

HAMMERCLOUD



- HammerCloud is a framework for a Distributed Analysis testing system.
- It Allows a “register” set of users to define and schedule analysis **functional** and **stress** test at a given site or group of sites.
- It can test your site(s) and report the results obtained on that test.
 - basic site validation,
 - help commission new sites,
 - evaluate SW changes,
 - compare site performances (?)

<http://hammercloud.cern.ch/hc/>

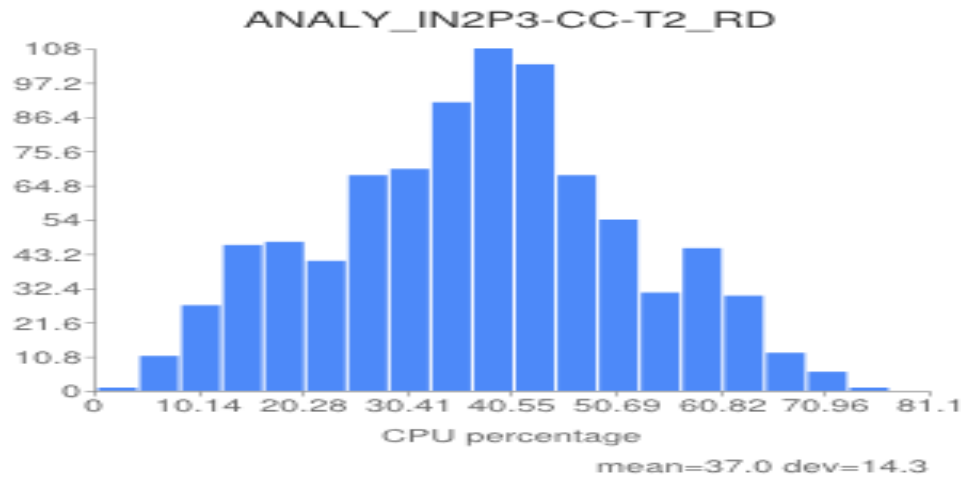
Test with HammerCloud are based on well define Templates accoring with experiment specific job submission frameworks, like Ganga and CRAB for the ATLAS and CMS experiments.

- Functional test (This can be seen as a "ping" test.)
- Stress test (It's a Distributed Analysis On-Demand test)

EXAMPLE: copy to scratch vs Direct Reading

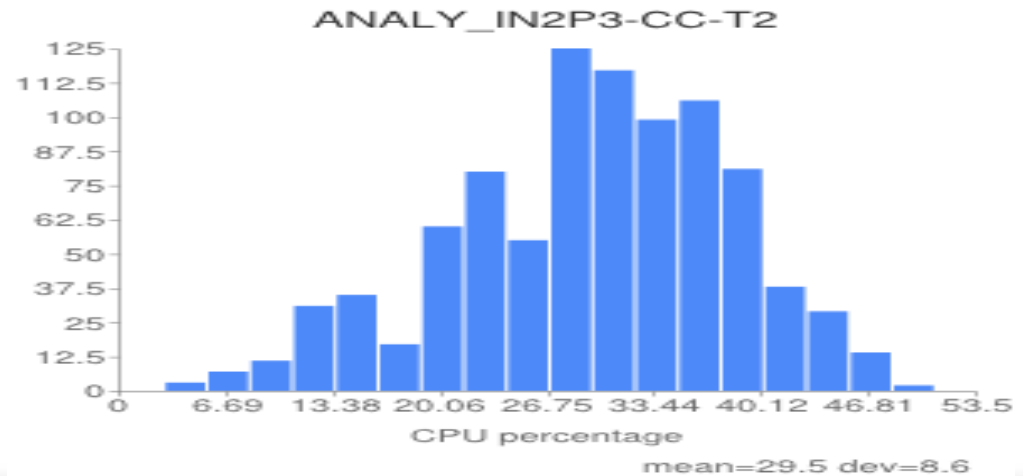


<http://hammercloud.cern.ch/hc/app/atlas/test/20008054/>



975 jobs

1059 jobs
Stagein ~3GB



work with HammerCloud ?



- It can facilitate the stress test on VM Wns in the framework of Cloud Computing (test with no real jobs).
- We can perform targeted tests on specific group of worker nodes, in order to test the saturation of various nodes resources (cpu, memory, local io, network).
- We can use HammerCloud StressTests for validation and “calibration” of the local monitoring tools (e.g eff per Wns)

Some machinery .. ?



**Set up a
panda_test_queue**

Pilot Factory

Submit Pilot on a
Test Cream

CREAM

Make Mapping to a
user specific of those
pilots

GE

Restrict the specific
User to a specific
Group of hosts

WNS