

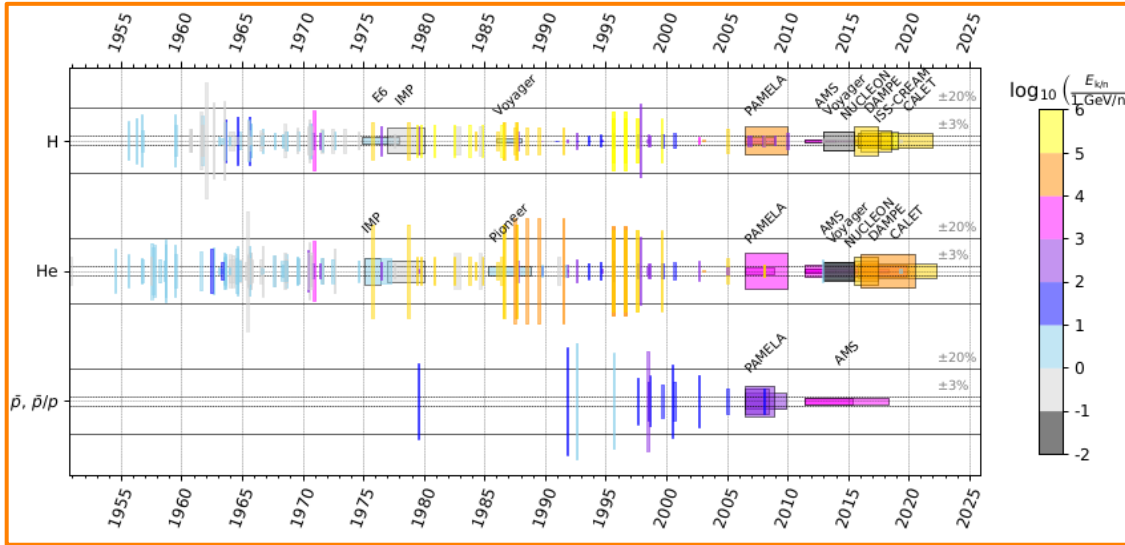
Precision cross-sections for advancing cosmic-ray physics and other applications:

Maurin *et al.* (2503.16173)
(to appear in Phys. Report)

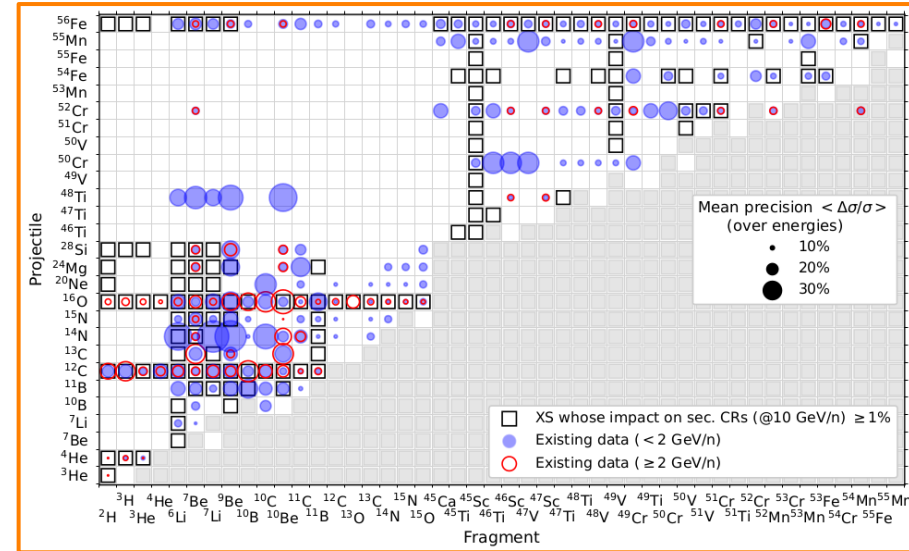
a comprehensive programme for the next decade

David Maurin
dmaurin@lpsc.in2p3.fr

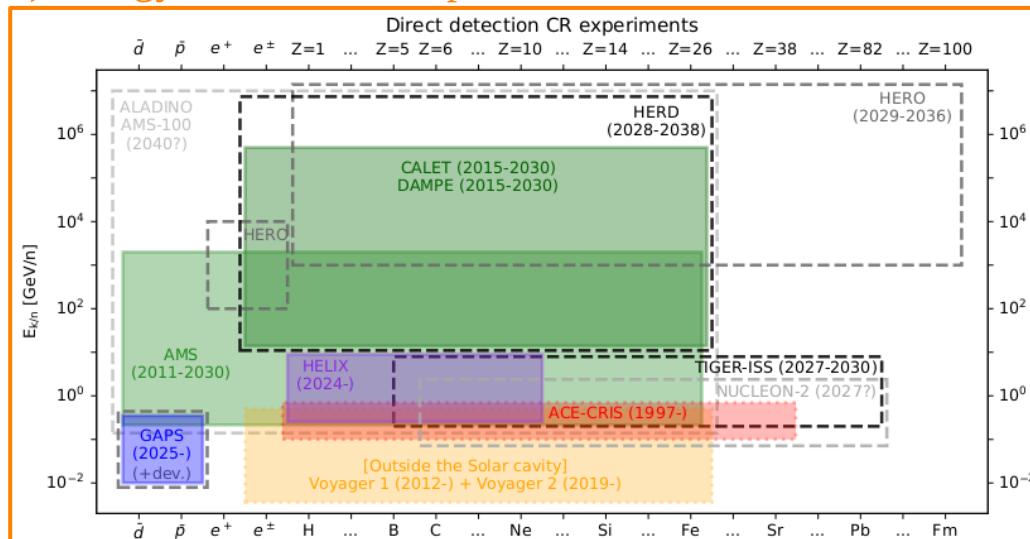
1) Current CR data: percent-level precision + higher E



2) Production XS (LiBeB, pbar): ~20% precision



3) Energy/Z/antinuc/isotope frontiers = even more XS needs



4) High-precision XS = key to many fields



Conclusion: precise XS = immediate game changer
+ exp/facilities (CERN, GSI, HIAF) exist!