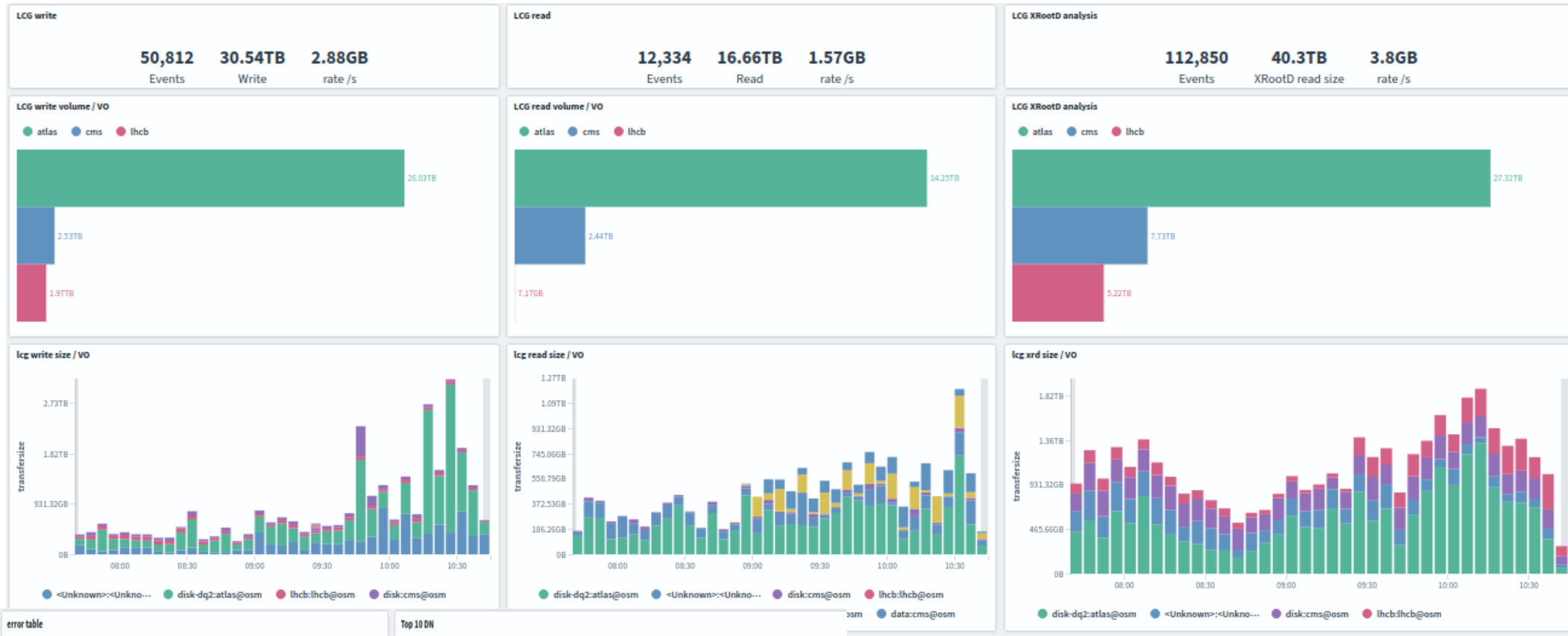


Dashboard pour un T2



error table

Errors

error code	error msg	Count
10,011	Transfer interrupted	28,199
666	Queued transfer cancelled: kill	28,194
666	Transfer forcefully killed: Active	964
10,006	No redirect from mover on pool	434
10,006	No redirect from mover on pool	412
666	Queued transfer cancelled: kill	291

Top 10 DN

Top 10 DN

DN	Count
/DC=ch/DC=cern/OU=Organic Units/OU=Users/CN=amalt	42,350
/DC=ch/DC=cern/OU=Organic Units/OU=Users/CN=atpiloc	30,170
/DC=ch/DC=cern/OU=Organic Units/OU=Users/CN=atpiloc	25,250
/DC=ch/DC=cern/OU=Organic Units/OU=Users/CN=xcach	21,176
/DC=ch/DC=cern/OU=Organic Units/OU=Users/CN=educa	19,920
cmsgrid	15,600

LCG Top 10 clients

Top 10 ip

Host	Count
2001:1458:301:1b:0:0:100:1c	9,519
2001:48a8:68f7:8001:192:41:237:109	5,514
2001:48a8:68f7:1:7efe:90ff:fe64:d579	4,914
2605:9a00:10:200a:e63d:1aff:fe71:b600	3,462
2605:9a00:10:200a:40a6:b7ff:fe87:fed0	2,437
2605:9a00:10:200a:e643:4bfff:1b:2608	1,923
2001:660:5009:312:134:158:51:164	1,724
194.36.11.35	1,697
2001:660:5009:311:134:158:50:180	1,516

1/ pour ipv4
 2/ pour tout



Dashboard pour un T2

LCG Top 10 pools

Top 10 pools

Pool	Count
Pool-Atlas_027	9,545
Pool-Atlas_026	7,045
DP_37-ATLAS-2	1,836
DP_36-ATLAS-2	1,764
pool-cms-disk-li462a	1,743
pool-cms-disk-li533a	1,718
Pool-Atlas_023	1,709
DP_37-ATLAS-1	1,708
pool-cms-disk-li460a	1,690

+ vue temporelle?

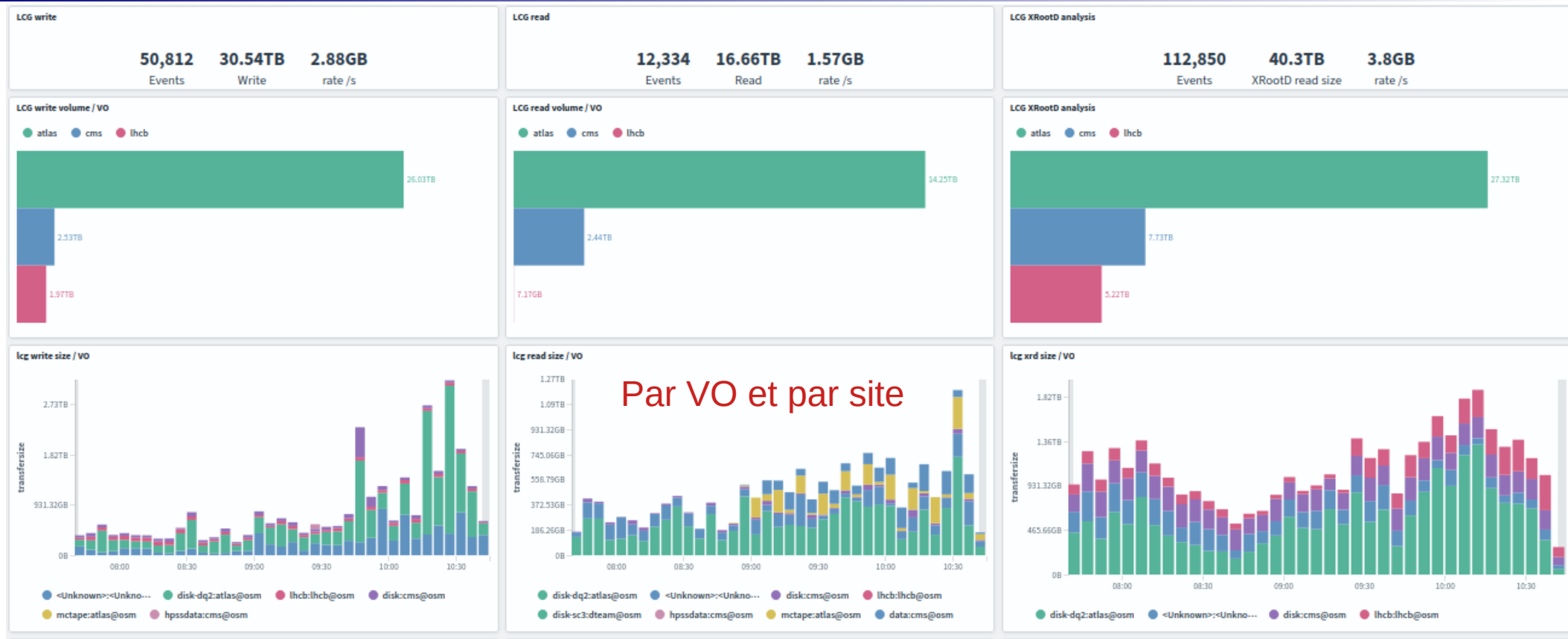
LCG deletion

29,931	2.3TB
Events	Deletion Size

Peut-on insérer un monitoring réseau du site, par ex dashboard CERN?



Dashboard commun



Ci-dessus: une fois pour le T1 et une fois pour les T2
Peut-on ajouter le monitoring réseau pour les T2?

