

EVN

e-MERLIN

LOFAR

Effelsberg

CFHT

CTAO

MAGIC

Auger

KM3NeT



© EVN



© U. Manchester



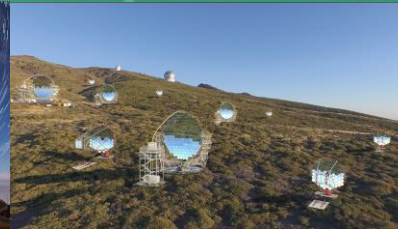
© ASTRON



© N. Tacken/MPIFR



© Sean Goebel/CFHT



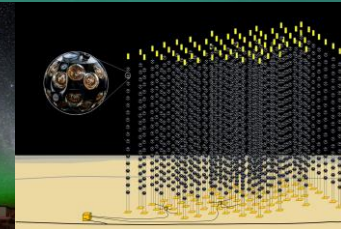
© ESO



© Daniel Lopez IAC



© Pierre Auger Observatory



© KM3NeT

ACME WP2 TA2 FOR MULTI-MESSENGER AND TIME-DOMAIN ASTROPHYSICS

ROB BESWICK, DAMIEN DORNIC, IZABELA ROTTMANN



LEAD: ROB BESWICK, DAMIEN DORNIC,
IZABELA ROTTMANN

13 Partners	CNRS, UNIMAN, MPG, JIV-ERIC, LOFAR-ERIC, NWO-I, IFAE, BUW, USC, VUAS, CNIG, UMK, AALTO				
1.8M€ Budget	<table> <tr> <td>access</td> <td>0,97M€</td> </tr> <tr> <td>mgt & dev</td> <td>0.87M€</td> </tr> </table>	access	0,97M€	mgt & dev	0.87M€
access	0,97M€				
mgt & dev	0.87M€				
9 RIs	<p>EVN, LOFAR, e-MERLIN, Effelsberg, CFHT, KM3Net, Auger, MAGIC, CTAO</p> <p>> 2600 hours</p> <p>> 200 projects</p> <p>> 780 users</p>				

EVN



© EVN

e-MERLIN



© U. Manchester

LOFAR



© ASTRON

CFHT



© Sean Goebel/CFHT

CTAO



© ESO

Effelsberg



© N. Tacke/MPIfR

MAGIC



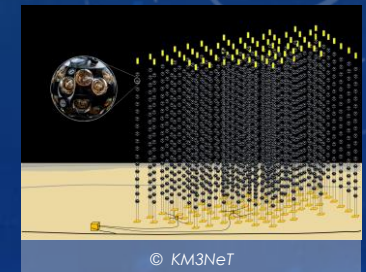
© Daniel Lopez IAC

Auger



© Pierre Auger Observatory

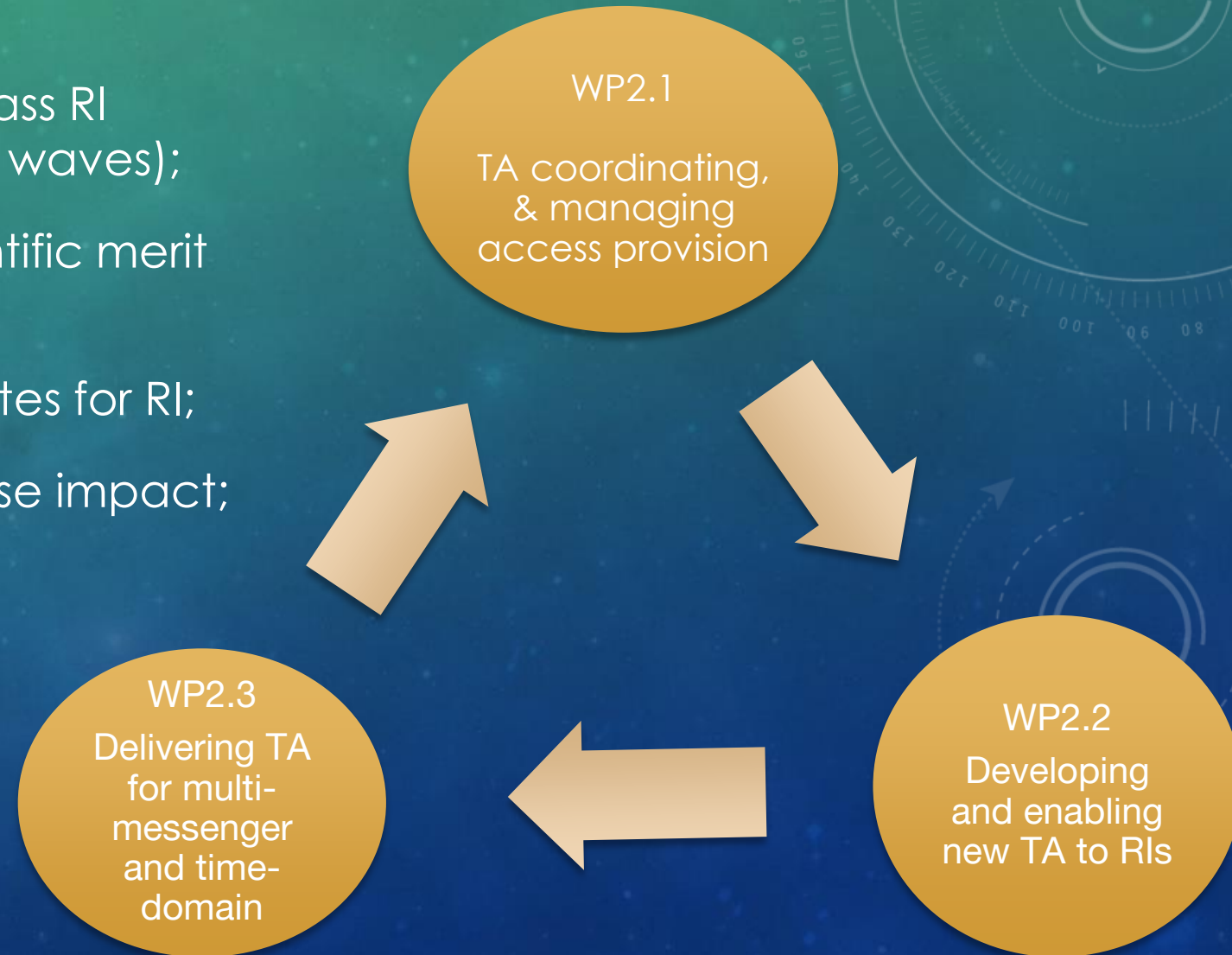
KM3NeT



© KM3NeT

ACME WP2 WILL PROVIDE

- TA to a complementary suite of world-class RI and data streams (gamma-rays to radio waves);
- Wider, open access on the basis of scientific merit including new RI;
- Co-develop new community access routes for RI;
- Facilitate innovative science and increase impact;
- Extended user communities



TA-ROUTE FOR NEW RESEARCH INFRASTRUCTURES

TA Policy & Implementation:

- TA Agreement per Collaboration rules
- Define & approve access rules, access policy, and PC for science merit review.
- “TA co-development forum” to share RI expertise and form new collaborations.

Harmonisation & Standardisation of Access:

- Collect, harmonise, and standardise access information for all facilities (GAP analysis).
- Develop access agreements with all RI participating in WP2.
- Offer users the most suitable access to different multi-messenger/-wavelength facilities.

Central Platform Development for TA:

- Disseminate access information and capabilities (links to operating TA, calls for proposals, and PC reviews for new RI).

EVN

e-MERLIN

LOFAR

Effelsberg

CFHT

CTAO

MAGIC

Auger

KM3NeT



© EVN

© U. Manchester

© ASTRON

© N. Tacken/MPIFR

© Sean Goebel/CFHT

© ESO

© Daniel. Lopez IAC

© Pierre Auger Observatory

© KM3NeT

DELIVERING TRANSNATIONAL ACCESS FOR MULTI-MESSENGER AND TIME-DOMAIN

Radio	EVN (JIVE, Tr, Ir, Mh, Yb), LOFAR, e-MERLIN, Eff
OPT	CFHT
GW	
GaVHE	CTA, MAGIC
Xray	
NeCR	Auger, KM3NeT

- ACME will enable open Transnational Access to 9 world-leading spanning radio, optical, and high-energy astrophysics, alongside astroparticle facilities.
- RI with existing open access processes will offer TA from year 1: EVN, LOFAR, e-MERLIN, Effelsberg, CFHT, MAGIC
- The remaining facilities will deliver TA after the development of TA process (year 2 onwards): KM3NeT, Pierre Auger Observatory, (CTAO)

WP2 Deliverables and Timeline

Month 1	WP2 Kick-off (already scheduled for 27 Sep 2024)
Month 20	M6 - Establishing of the agreement on TA (<i>doc signed by affected parties/IR</i>)
Month 24	M7 - Set-up TAC(s) for new TA facilities (<i>Appointed experts verified by ACME mgt</i>) D2.1 - Report on provided access (MPG)
Month 28	M8 - Issue 1st call for proposals for new TA facilities (<i>Through the ACME webpage</i>)
Month 36	D2.1 - Report on onboarding of new facility TA provision (CNRS)
Month 48	D2.3 - report on provided access (UNIMAN)

EVN



© EVN

e-MERLIN



© U. Manchester

LOFAR



© ASTRON

Effelsberg



© N. Tacke/MPIfR

CFHT



© Sean Goebel/CFHT

CTAO



© ESO

MAGIC



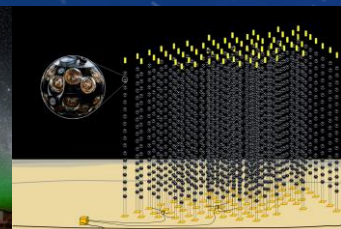
© Daniel Lopez IAC

Auger



© Pierre Auger Observatory

KM3NeT



© KM3NeT

WP2 LEGACY

- Establishing Transnational Access to astroparticle Research Infrastructures
- Working access-routes for multi-messenger science cases
- Increasing impact of innovative science
- Existence of new multi-messenger user community

EVN



© EVN

e-MERLIN



© U. Manchester

LOFAR



© ASTRON

Effelsberg



© N. Tacke/MPIfR

CFHT



© Sean Goebel/CFHT

CTAO



© ESO

MAGIC



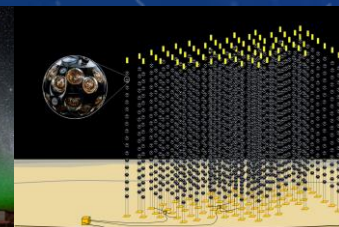
© Daniel Lopez IAC

Auger



© Pierre Auger Observatory

KM3NeT



© KM3NeT

THANK YOU

Contact: acme-wp2-mgt@mpifr.de

EVN



© EVN

e-MERLIN



© U. Manchester

LOFAR



© ASTRON

CFHT



© Sean Goebel/CFHT

CTAO



© ESO

Effelsberg



© N. Tacke/MPfIR

MAGIC



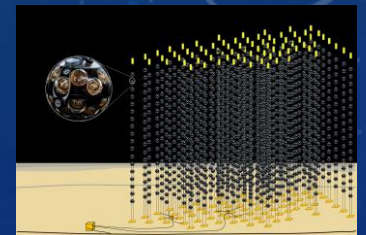
© Daniel Lopez IAC

Auger



© Pierre Auger Observatory

KM3NeT



© KM3NeT