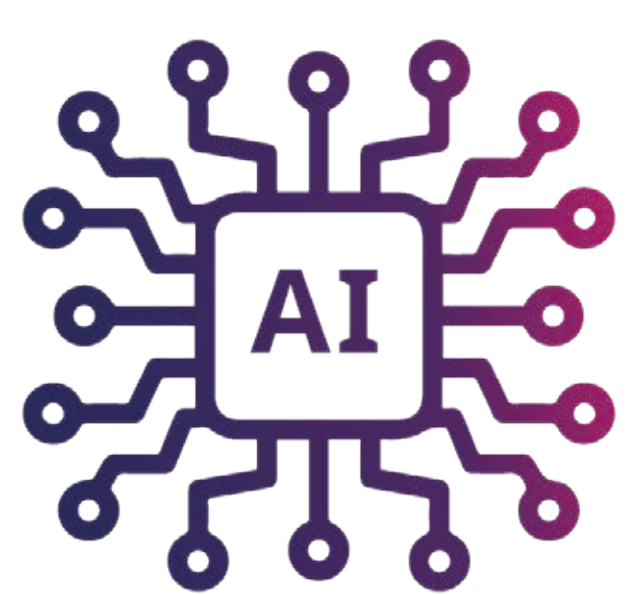
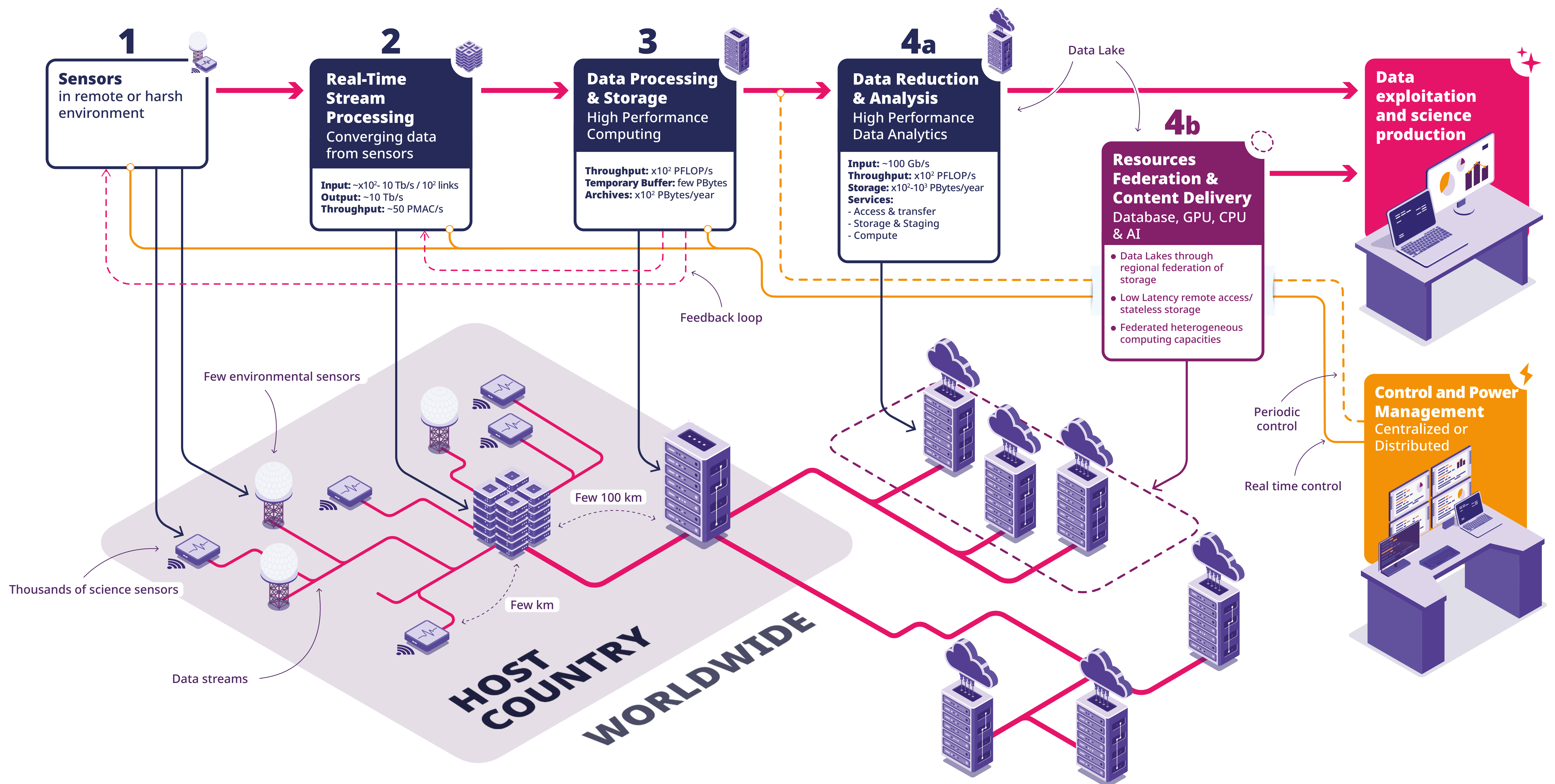
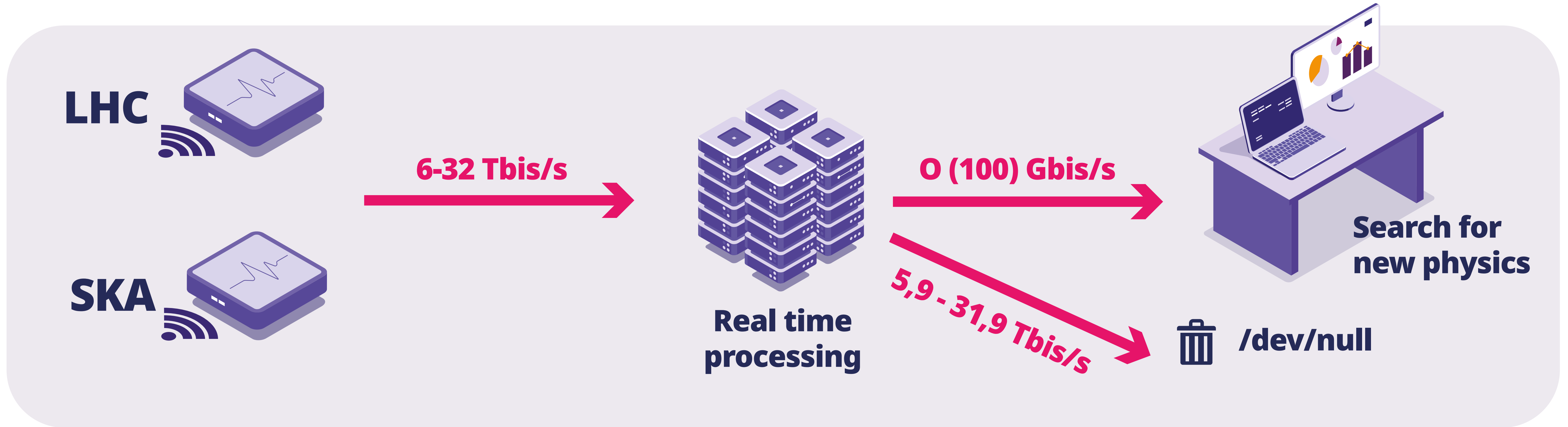


## Converged AI real-time data processing for SKAO and HL-LHC



### On-the-fly data processing

Using eco-responsible artificial intelligence for efficient selection of relevant data and trustworthy preservation of actionable data products



### Dedicated hardware and software solutions

Development of dedicated hardware and open, non-proprietary software solutions that are both energy-efficient and flexible, to facilitate their adaptability to unknown situations



### Enhance the HPC ecosystem

Exploit and enhance the European High Performance Computing (HPC) ecosystem, anticipating the needs of next-generation Exascale supercomputers



### SLICES RI is designed to address innovative digital infrastructure experiments

SLICES offers a unique experimental platform for component configuration, test calculations and user training