



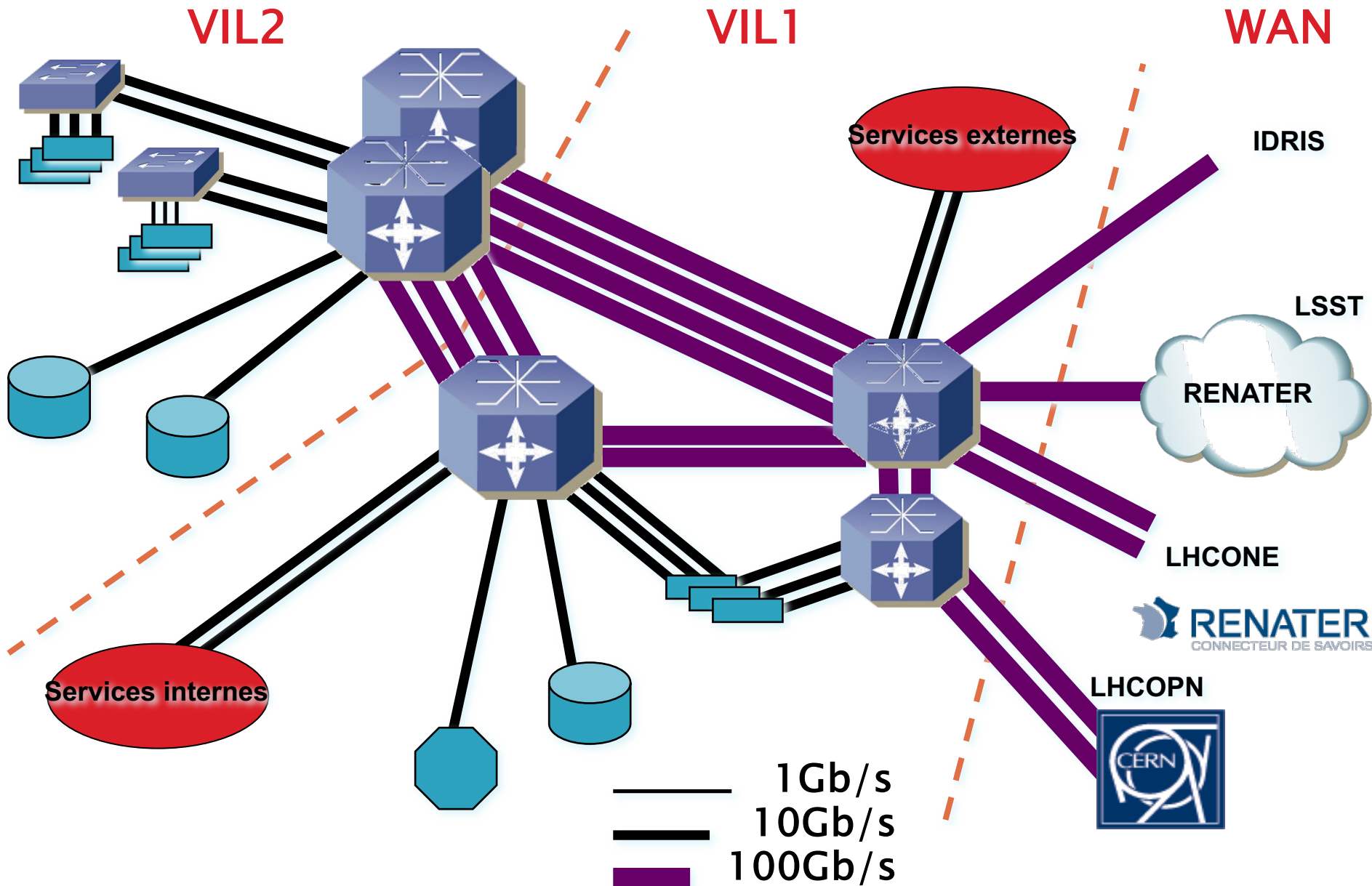
Centre de Calcul de l'Institut National de Physique Nucléaire et de Physique des Particules

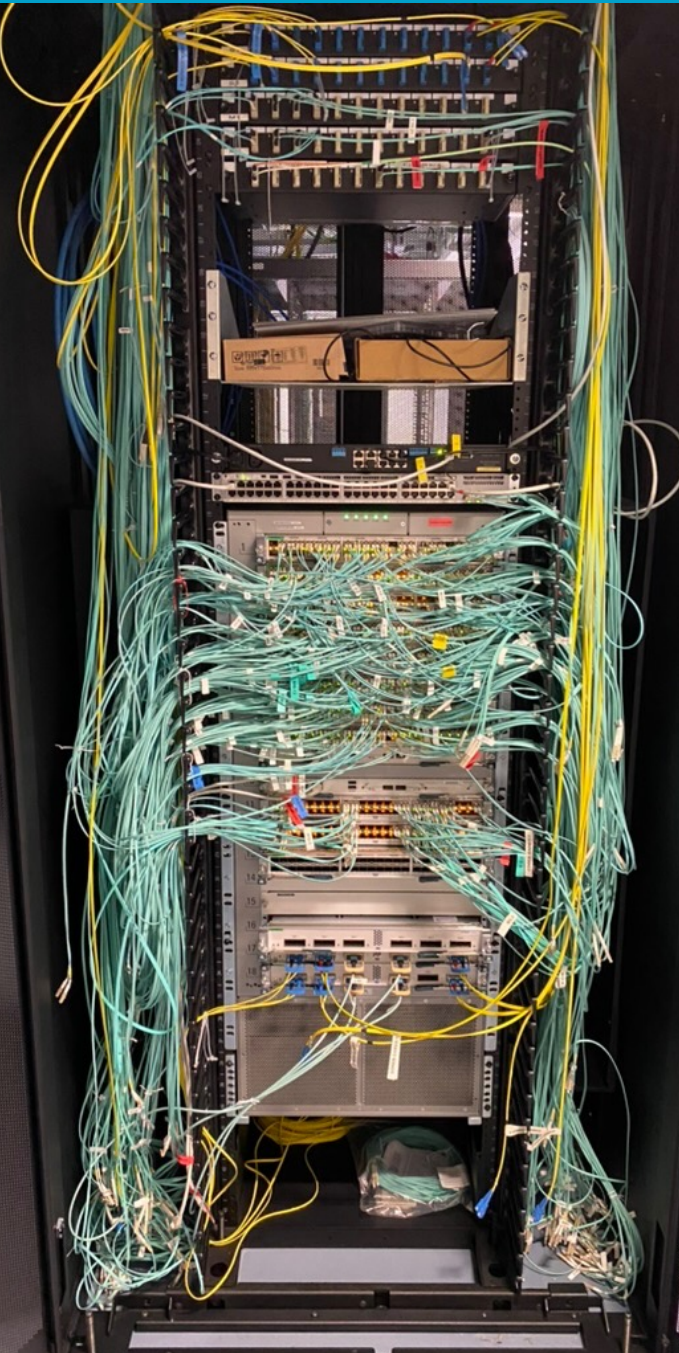
LAN CCIN2P3 LCG-France

Juin 2024

Jérôme Bernier

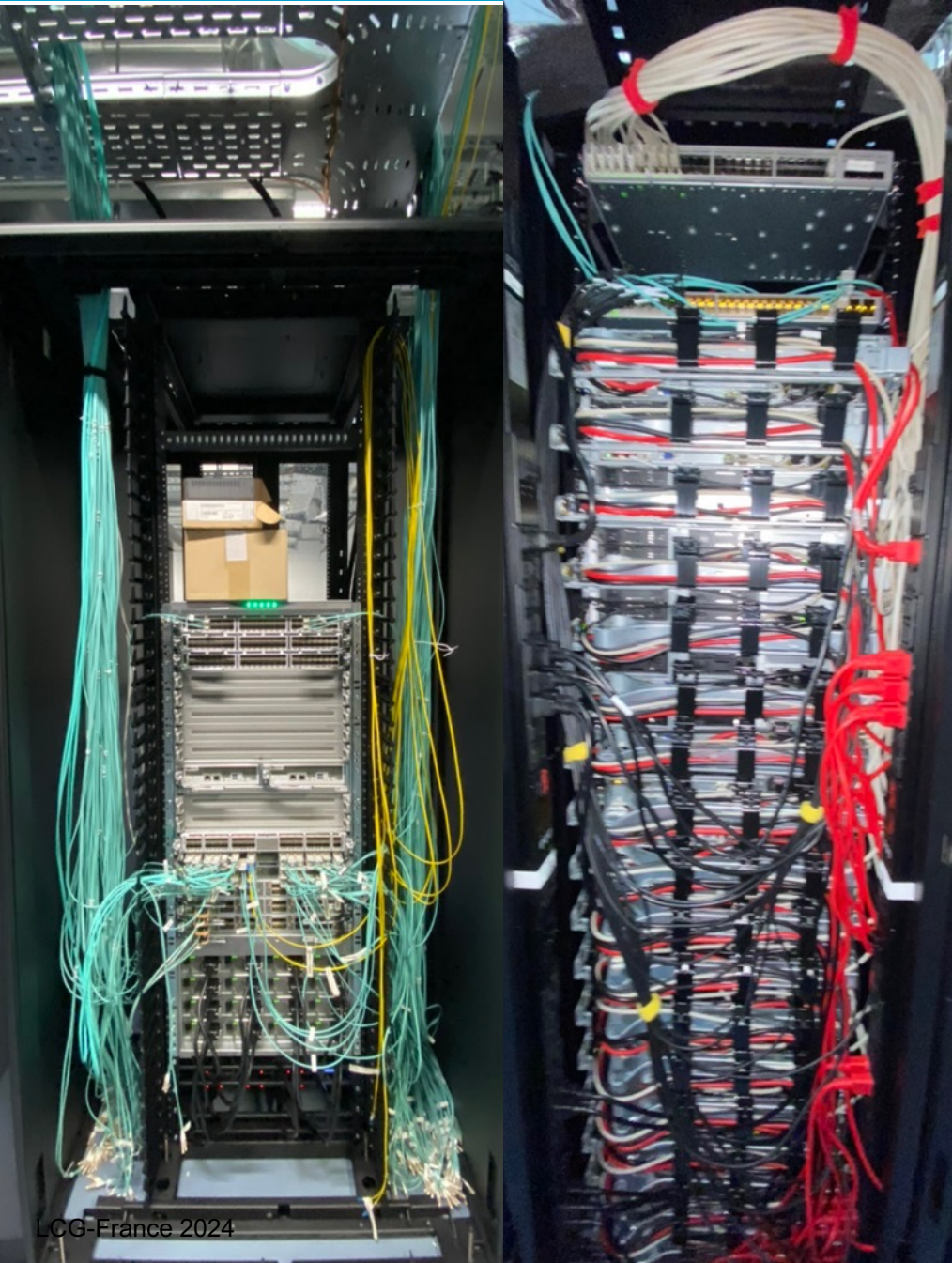






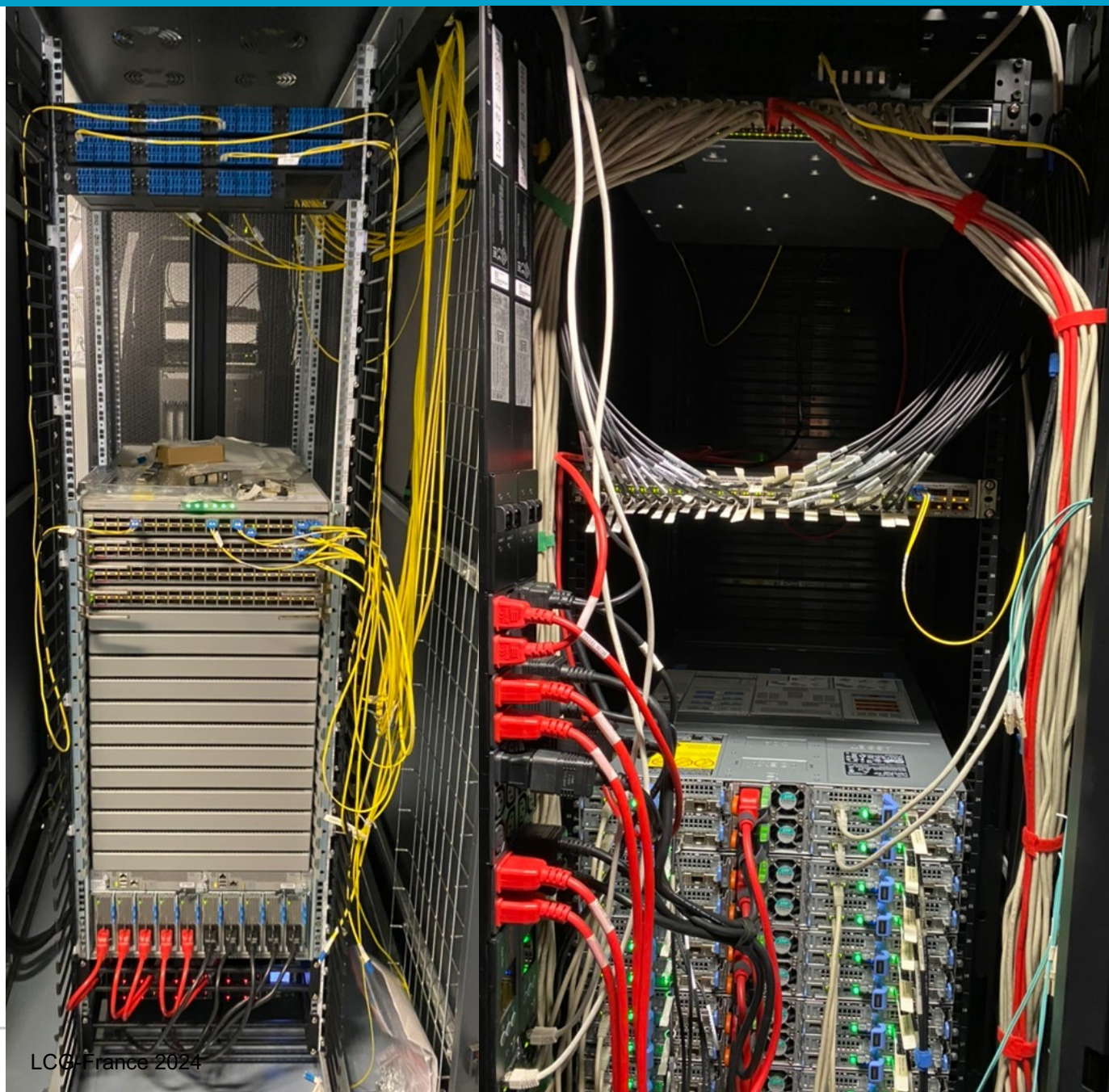
- Contrôle
Vieux CISCO C4948
-> C9200 48 RJ
+ 4 1/10G
- TOR CISCO N9K
48x 1/10/25G
+ 6x 40/100G
- 4x Multimode 10G

- Usage
Moyen 10Gb/s
Max 40Gb/s



- Contrôle
C9200 48 RJ
- TOR CISCO N9K
48x 10/25G
+ 6x 100G
- 2x Multimode 100G

- Usage
Moyen 5Gb/s
Max 30Gb/s



- Contrôle
C9200 48 RJ
- TOR CISCO N9K
48x 10/25G
+ 6x 100G
- 1x Monomode 100G

- Coût / rack
Switches 7K€
Fibre SM x12 1K€
DAC x48 2K€

- Usage
Moyen 10Gb/s
Max 50Gb/s



- Contrôle
C9200 48 RJ
 - TOR CISCO 2x N9K
48x 10G
+ 6x 100G
 - 2x2 Multimode 100G
-
- Usage
Moyen 2Gb/s
Max 20Gb/s

