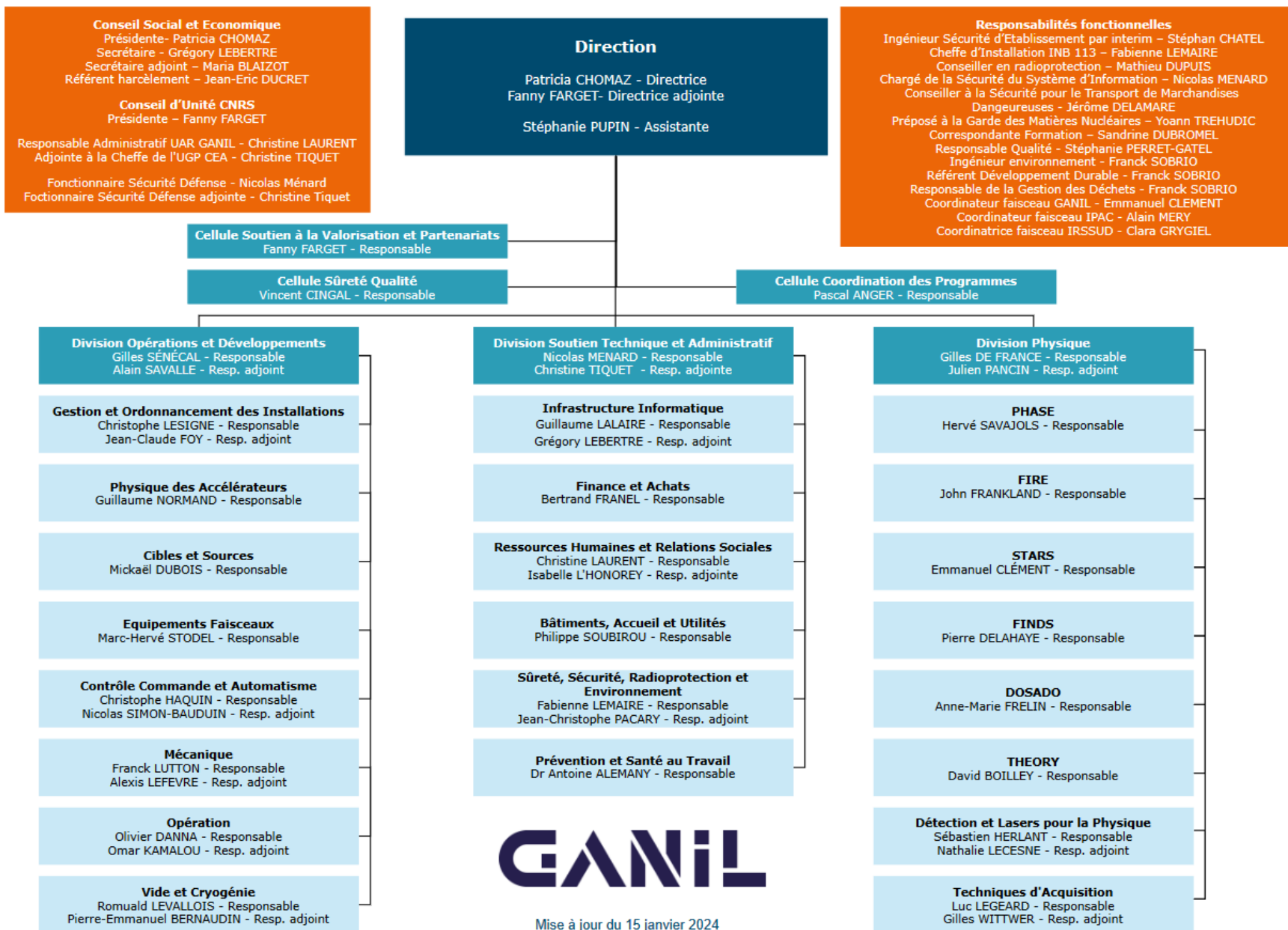


An aerial, top-down view of a complex industrial facility, possibly a refinery or chemical plant. The image shows a dense network of pipes, walkways, and large cylindrical storage tanks. The entire scene is overlaid with a semi-transparent blue filter. The text 'CANIL' is centered at the top in a white, bold, sans-serif font.

**CANIL**

# Short overview

# Organizational chart



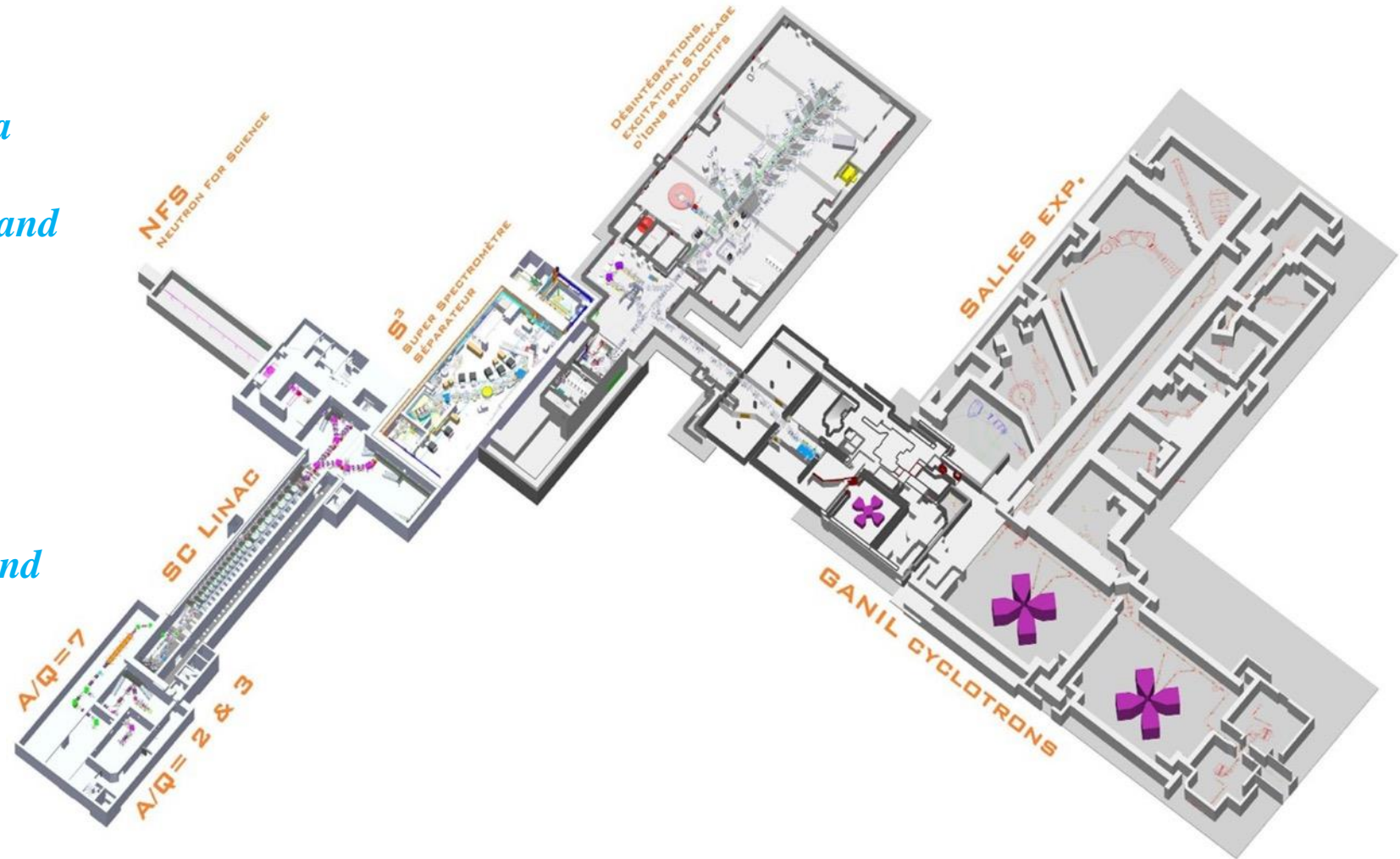
# Facility

## Already used:

- *Cyclotrons and experiment area*
- *Lot of Instruments: Vamos/Exogam/Actar/Falstaff and various detectors*
- *Spiral 1 (exotic beam)*
- *Spiral 2 Linac with NFS room*

## Futur:

- *S3 spectrometer with S3 LEB and Sirius*
- *Newgain*
- *DESIR*
- *Cyren: Cyclotron renovation*



# Aerial view



GANIL

# Restaurant: El Olivo à 20H

