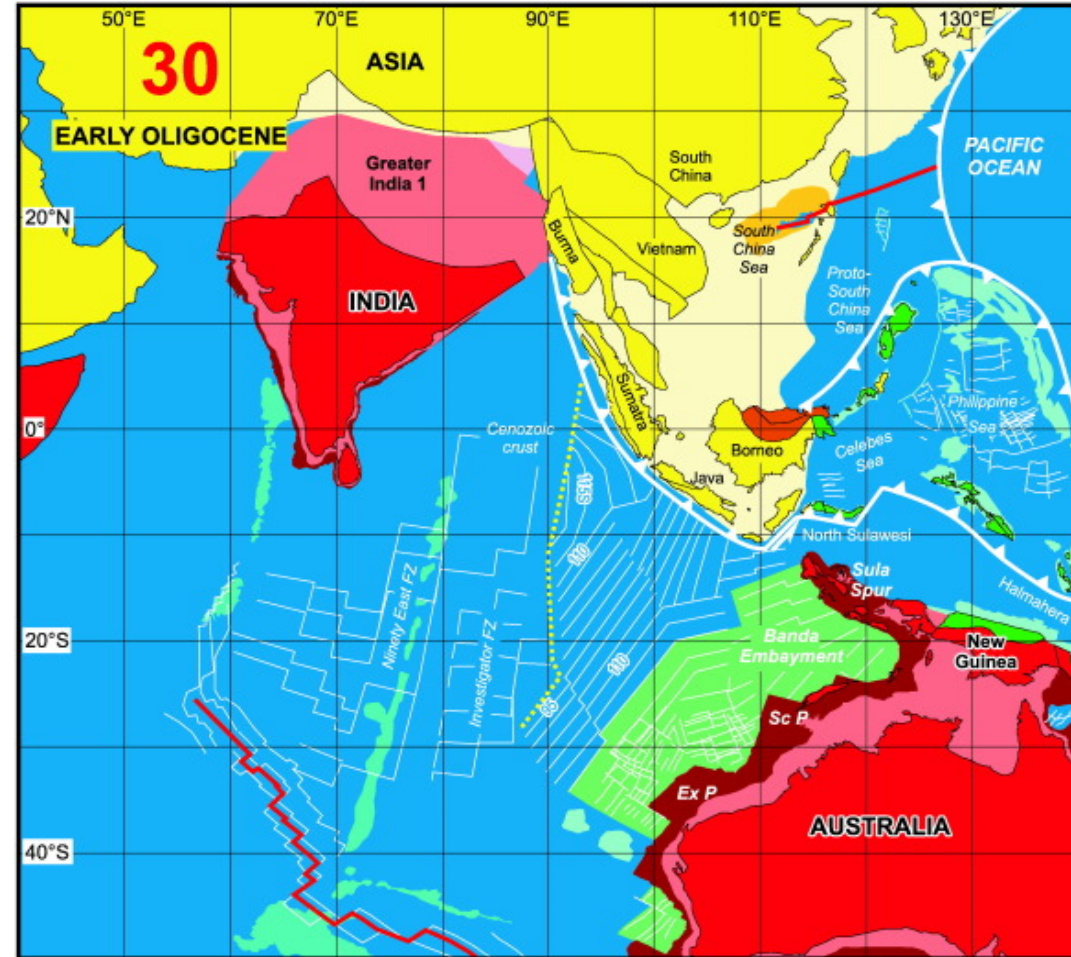
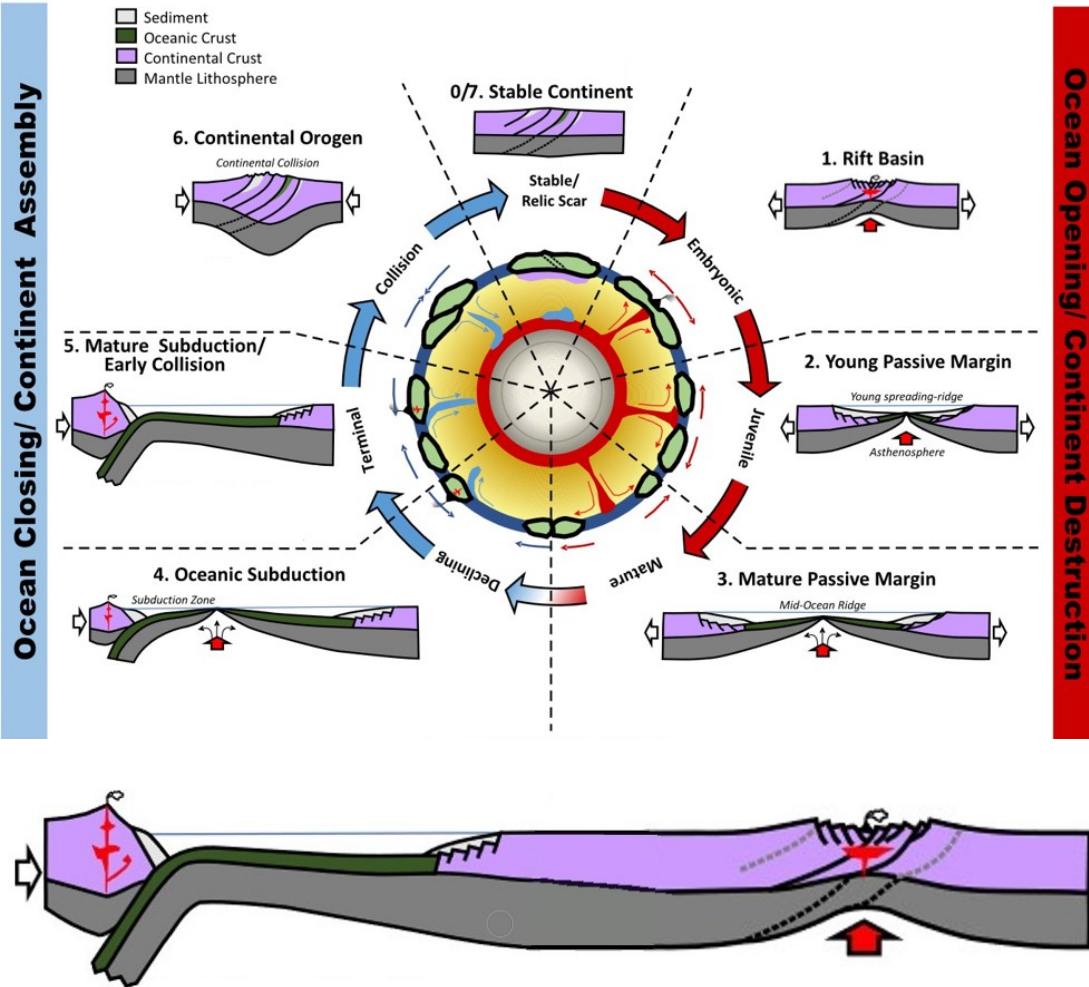


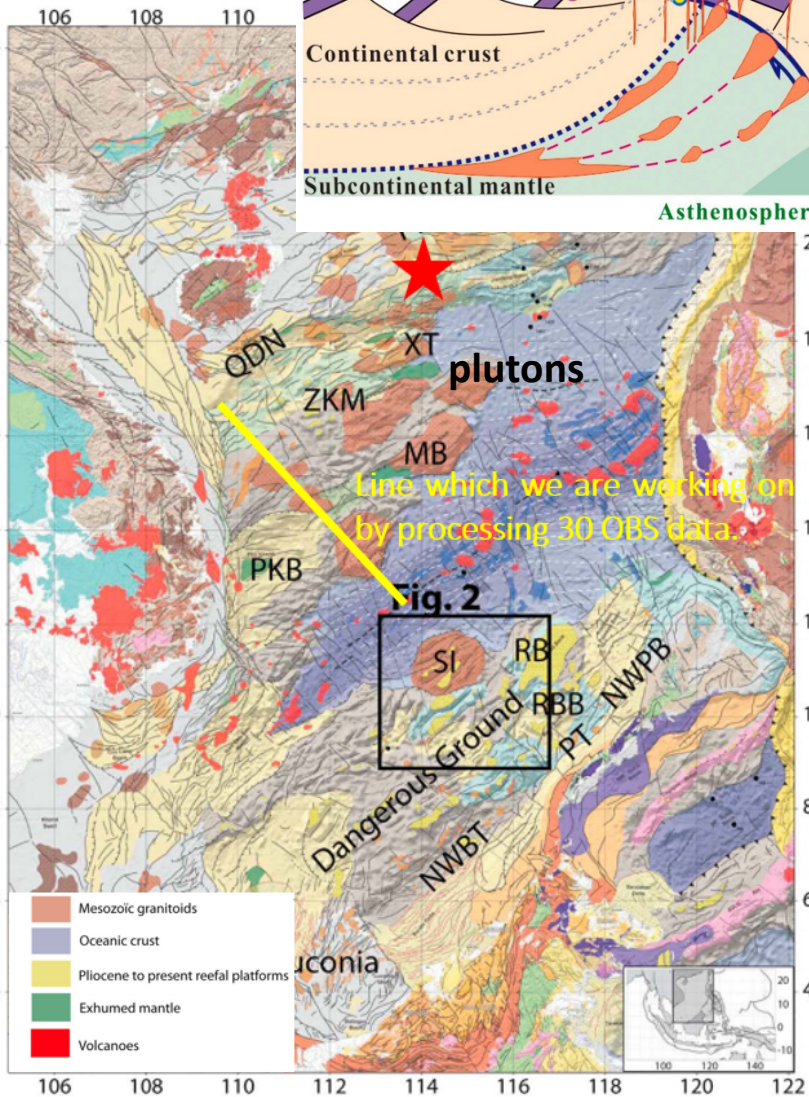
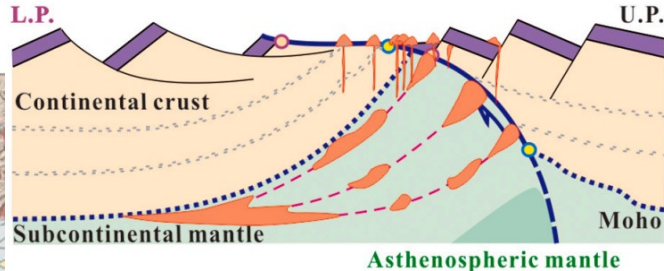
Impact of thermal, compositional and structural inheritance on early post orogenic continental break up in the South China Sea

Ph.D. student: Fan ZHOU

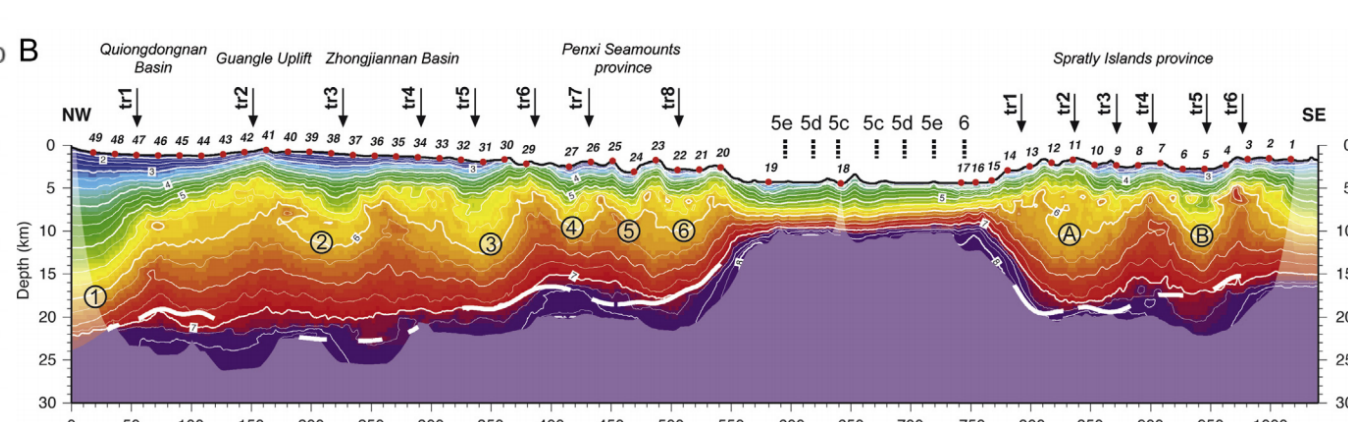
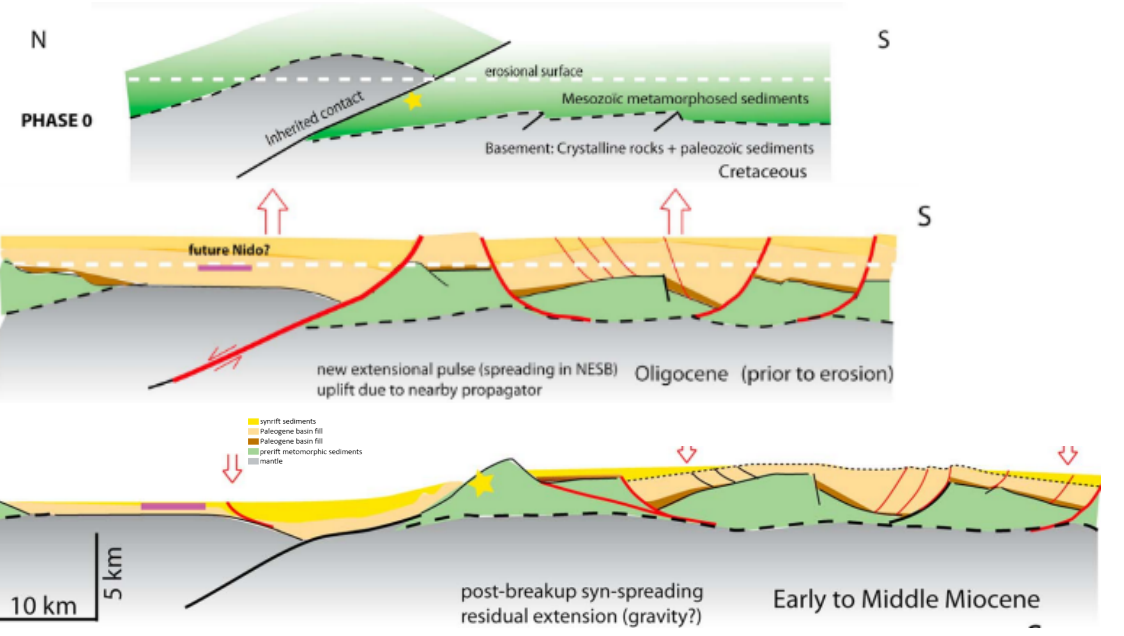
Supervisor: Matthias DELESCLUSE & Co-supervisor: Laetitia LE POURHIET



metamorphic core complexes (MCC)

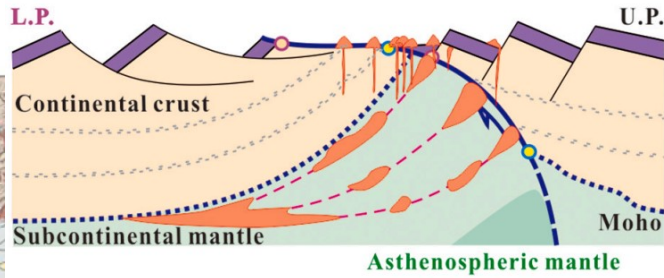


inherited structure

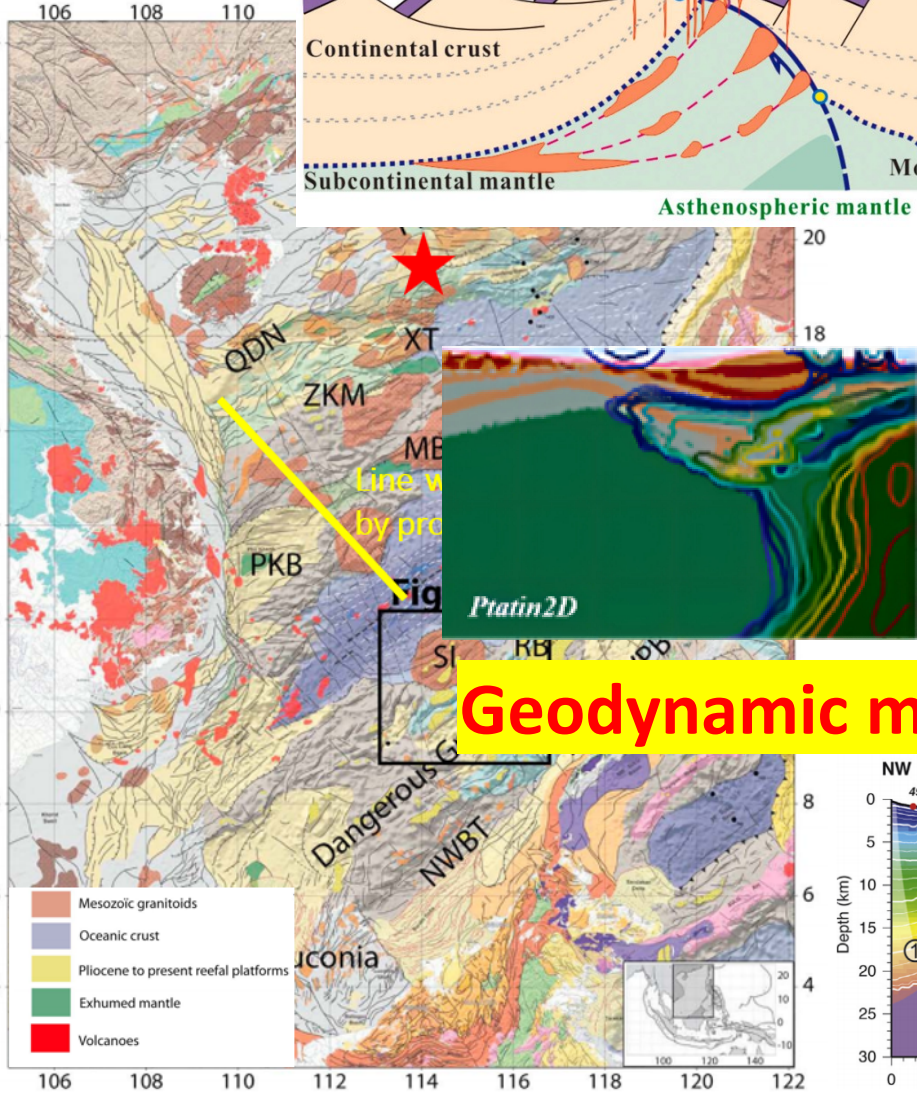
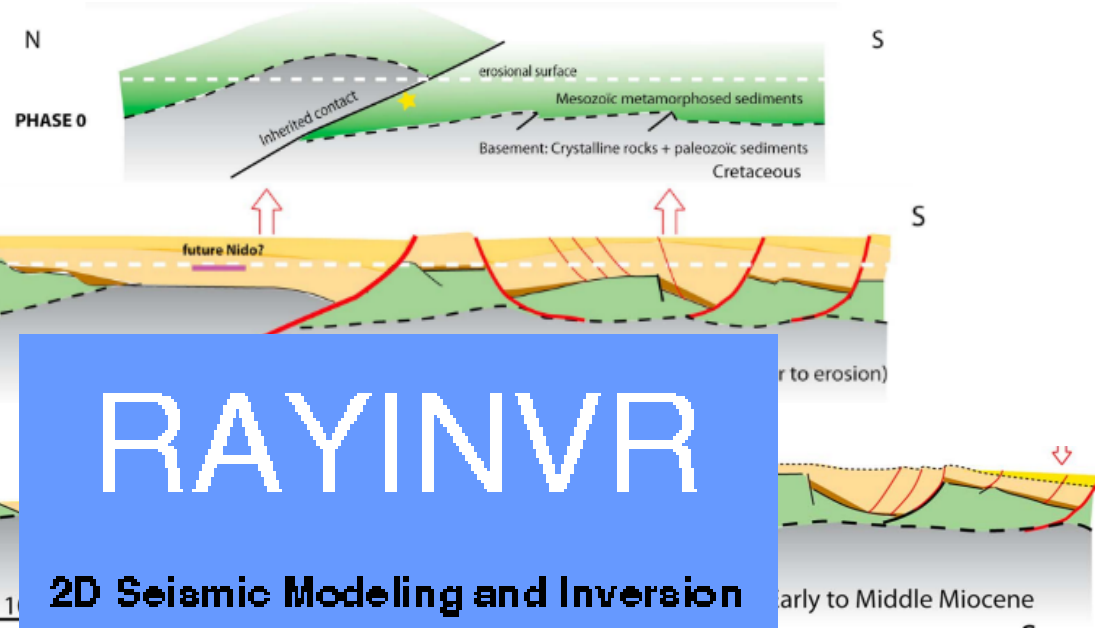


Wavy shaped Moho and sharply reduced thickness of the continent

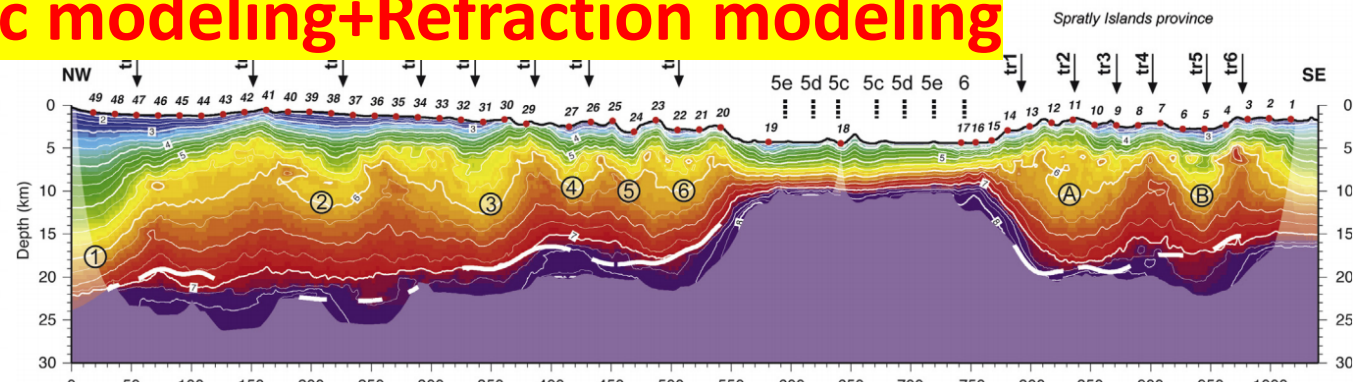
metamorphic core complexes (MCC)



inherited structure



Geodynamic modeling+Refraction modeling



wavy shaped Moho and sharply reduced thickness of the continent