



Nature of Magma Chamber Reservoir from Seismic Full Waveform Inversion of Ultra-long Offset Multi-channel Seismic Reflection Data at the Axial Volcano in the Pacific Ocean

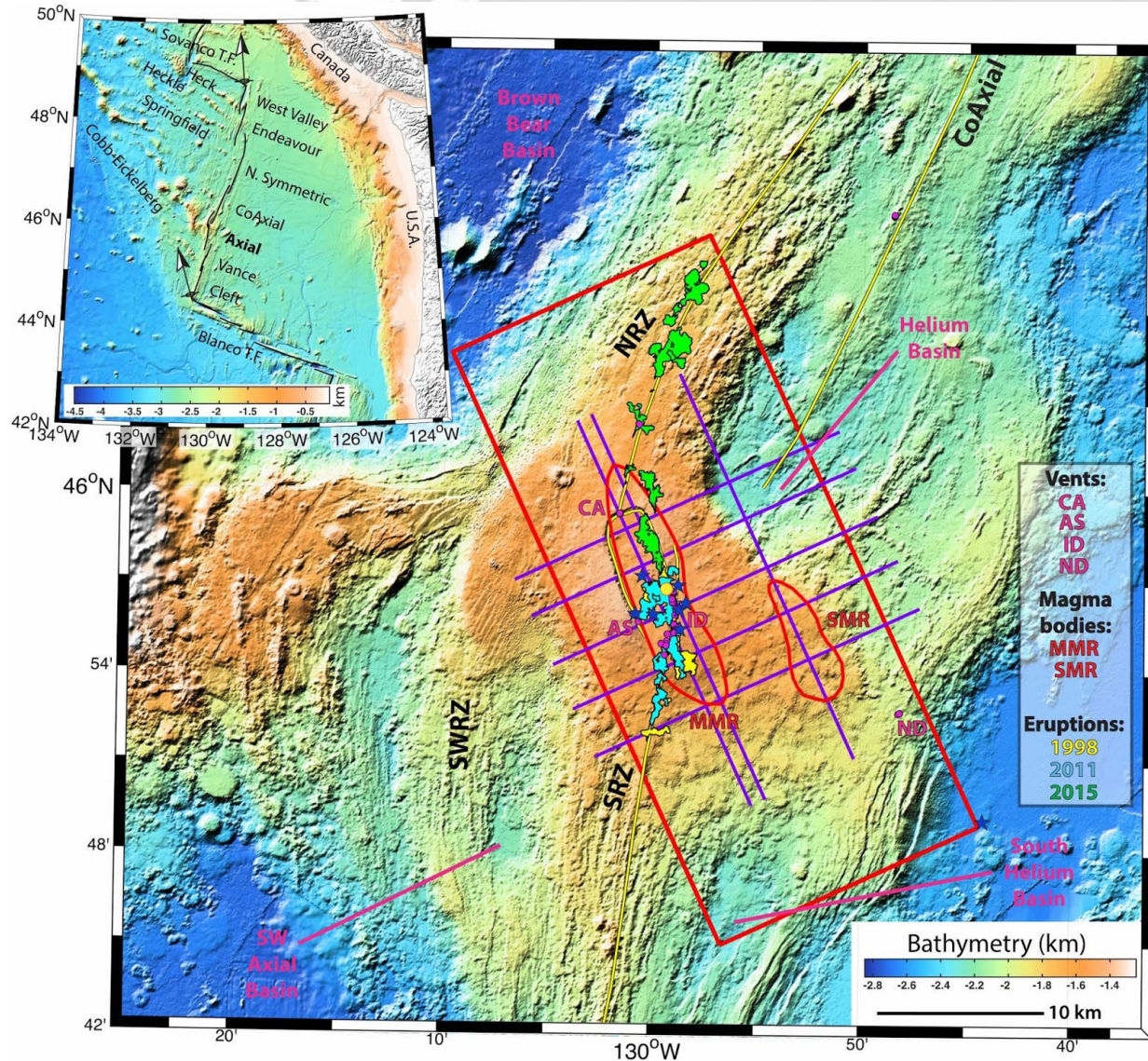
Wenxin Xie, Satish Singh, H el ene Carton

Marine Geosciences Team

Universit e Paris Cit e, Institut de Physique du Globe de Paris, CNRS, Paris, France



STUDY AREA



Key Points

Axial volcano

Magma chamber

Ultra-long offset 2D profiles

Downward continuation

Traveltime tomography

Full-waveform inversion