

Centre de Calcul
de l'Institut National de Physique Nucléaire
et de Physique des Particules

LSST Data Products

A quick introduction

Fabio Hernandez, Quentin Le Boulc'h, Gabriele Mainetti



Introduction



Images and
Catalog



References



Video Demo

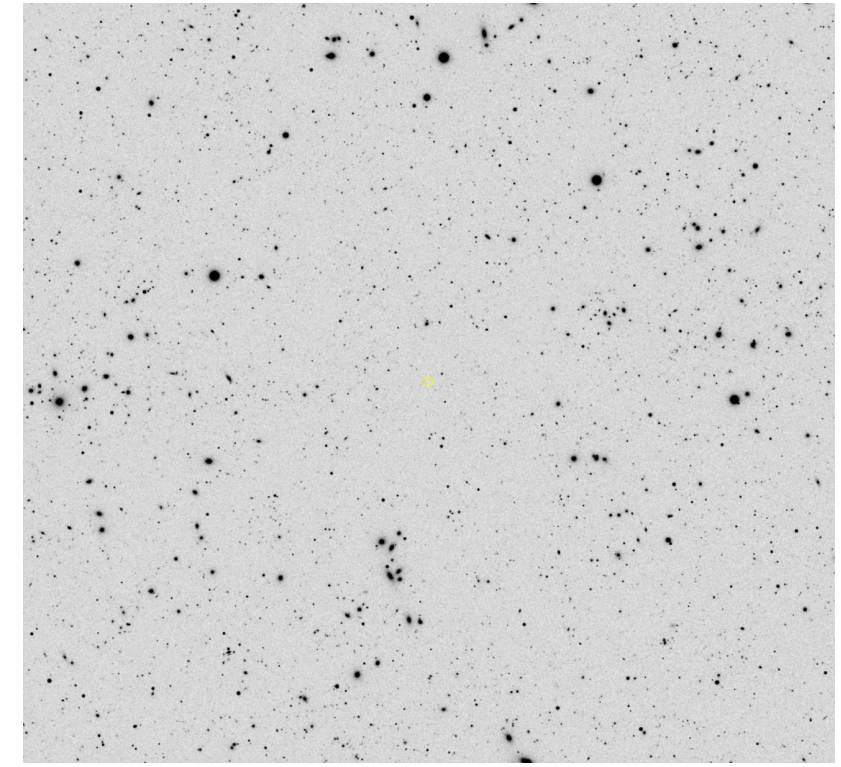
Introduction

LSST Data Products

Introduction

LSST Data Products

Images



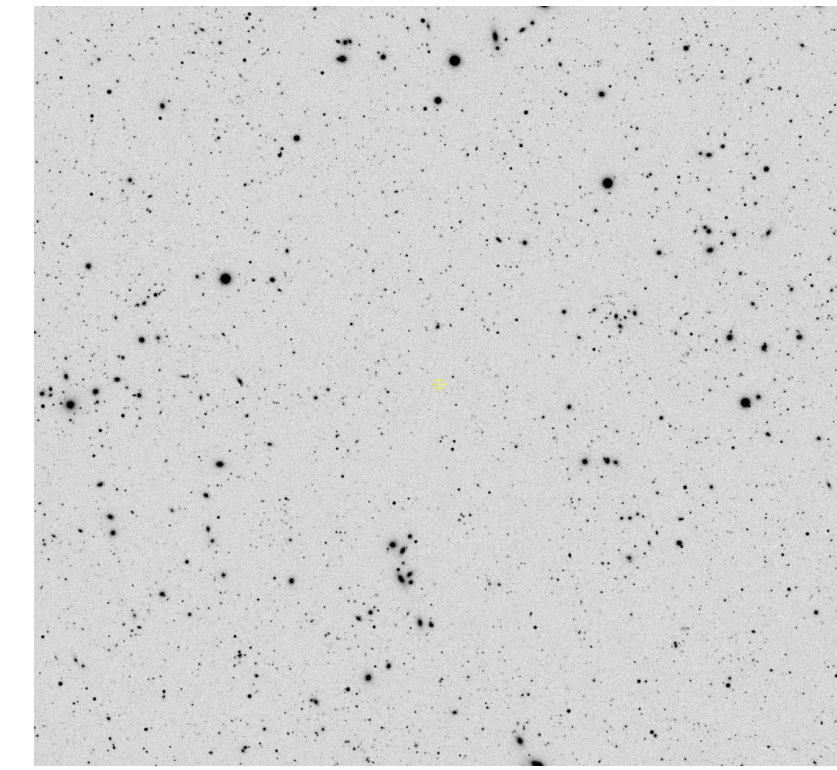
Introduction

LSST Data Products

Catalog

Images

coord_dec (deg) double	coord_ra (deg) double	deblend_nChild int	deblend_skipped boolean	detect_fromBlend boolean	detect_isDeblendedModelSource boolean	detect_isDeblendedSource boolean	detect_isIsolated boolean	detect_isPatchInner boolean	detect_isPrimary boolean	detect_isTractInner boolean	footprintArea (pixel) int	q_ap03Flux (nJy) double	q_ap03Flux_flag boolean	q_ap03FluxErr (nJy) double	q_ap06Flux (nJy) double	q_ap06Flux_flag boolean	q_ap06FluxErr (nJy) double	q_ap09Flux (nJy) double	q_ap09Flux_flag boolean
-32.8731327	63.0168574	1	false	false	false	true	true	true	true	true	143	61.2333679	false	8.6223576	135.1218886	false	17.3136285	164.6818271	false
-32.8752928	63.0172388	0	false	true	true	true	false	true	true	true	651	109.4846596	false	8.7796789	197.0007136	false	17.5803744	229.8476385	false
-32.8759299	63.017164	0	false	true	true	true	false	true	true	true	650	317.3165384	false	8.9517221	466.7059158	false	17.6773116	494.1617681	false
-32.8757029	63.0205613	0	false	false	true	false	true	true	false	true	81	21.2741645	false	8.7357334	61.4612223	false	17.5722524	110.2749747	false
-32.874725	63.0161931	0	false	true	true	true	false	true	true	true	2407	47.1925192	false	8.5785793	71.6698694	false	17.3014455	80.403129	false
-32.8751307	63.0151232	0	false	true	true	true	false	true	true	true	3508	2367.2119154	false	10.2437228	4152.2584567	false	18.9773117	4832.0008339	false
-32.8756587	63.0152527	0	false	true	true	true	false	true	true	true	3333	144.2648622	false	8.896067	277.5704323	false	17.8996456	319.2882308	false
-32.8744746	63.0155065	0	false	true	true	true	false	true	true	true	3474	188.4251397	false	8.7756968	406.0152593	false	17.5145565	484.4950779	false
-32.8737537	63.0157199	0	false	true	true	true	false	true	true	true	2349	26.2440227	false	8.5990249	41.0337997	false	17.2829104	41.2700127	false
-32.8744004	63.0167379	0	false	true	true	true	false	true	true	true	2355	52.5095027	false	8.6332981	83.8199298	false	17.3014404	79.0942695	false

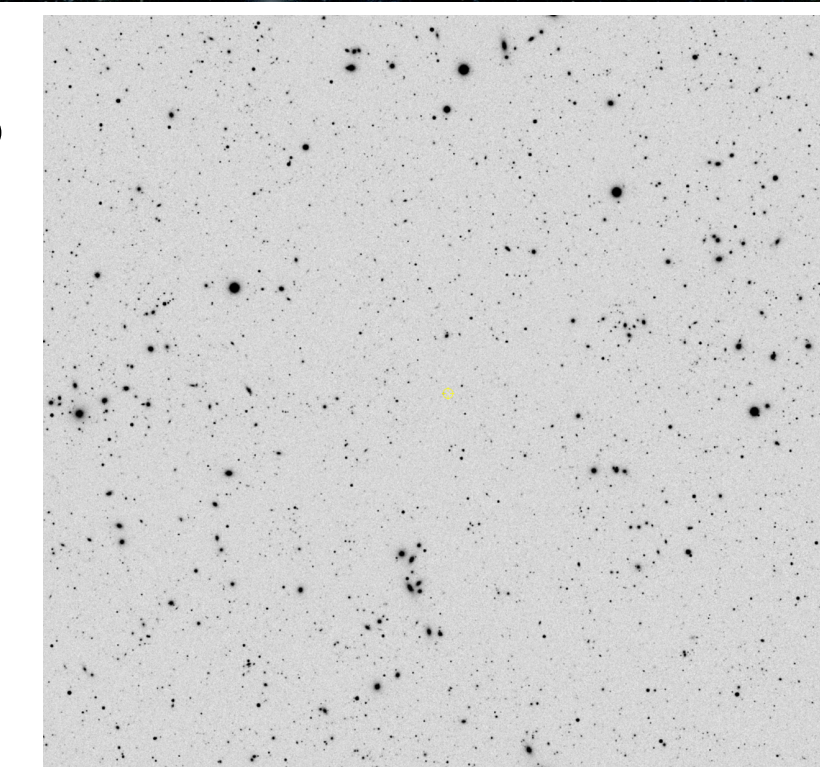


Introduction

LSST Data Products

Catalog

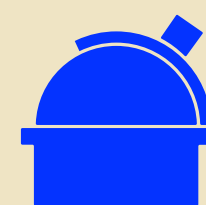
Images



coord_dec (deg) double	coord_ra (deg) double	deblend_nChild int	deblend_skipped boolean	detect_fromBlend boolean	detect_isDeblendedModelSource boolean	detect_isDeblendedSource boolean	detect_isIsolated boolean	detect_isPatchInner boolean	detect_isPrimary boolean	detect_isTractInner boolean	footprintArea (pixel) int	q_ap03Flux (nJy) double	q_ap03Flux_flag boolean	q_ap03FluxErr (nJy) double	q_ap06Flux (nJy) double	q_ap06Flux_flag boolean	q_ap06FluxErr (nJy) double	q_ap09Flux (nJy) double	q_ap09Flux_flag boolean
-32.8731327	63.0168574	1	false	false	false	true	true	true	true	true	143	61.2333679	false	8.6223576	135.1218886	false	17.3136285	164.6818271	false
-32.8752928	63.0172388	0	false	true	true	true	false	true	true	true	651	109.4846596	false	8.7796789	197.0007136	false	17.5803744	229.8476385	false
-32.8759299	63.017164	0	false	true	true	true	false	true	true	true	650	317.3165384	false	8.9517221	466.7059158	false	17.6773116	494.1617681	false
-32.8757029	63.0205613	0	false	false	true	false	true	true	false	true	81	21.2741645	false	8.7357334	61.4612223	false	17.5722524	110.2749747	false
-32.874725	63.0161931	0	false	true	true	true	false	true	true	true	2407	47.1925192	false	8.5785793	71.6698694	false	17.3014455	80.403129	false
-32.8751307	63.0151232	0	false	true	true	true	false	true	true	true	3508	2367.2119154	false	10.2437228	4152.2584567	false	18.9773117	4832.0008339	false
-32.8756587	63.0152527	0	false	true	true	true	false	true	true	true	3333	144.2648622	false	8.896067	277.5704323	false	17.8996456	319.2882308	false
-32.8744746	63.0155065	0	false	true	true	true	false	true	true	true	3474	188.4251397	false	8.7756968	406.0152593	false	17.5145565	484.4950779	false
-32.8737537	63.0157199	0	false	true	true	true	false	true	true	true	2349	26.2440227	false	8.5990249	41.0337997	false	17.2829104	41.2700127	false
-32.8744004	63.0167379	0	false	true	true	true	false	true	true	true	2355	52.5095027	false	8.6332981	83.8199298	false	17.3014404	79.0942695	false

Prompt Data Products :

Products generated by the prompt processing on a nightly/daily basis for time-dependents phenomena



Processed Visit Images
Difference Images



DIASource → Fink
DIAObject and SSOBJECTS
Almost real time database

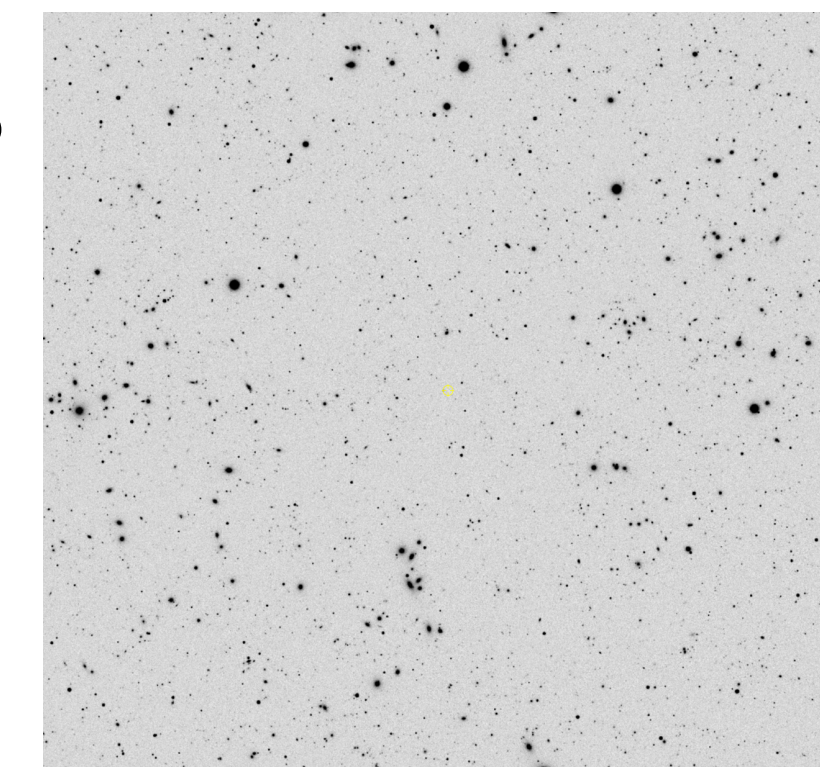
Introduction

LSST Data Products

Catalog

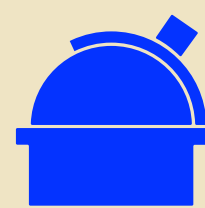
Images

coord_dec (deg) double	coord_ra (deg) double	deblend_nChild int	deblend_skipped boolean	detect_fromBlend boolean	detect_isDeblendedModelSource boolean	detect_isDeblendedSource boolean	detect_isIsolated boolean	detect_isPatchInner boolean	detect_isPrimary boolean	detect_isTractInner boolean	footprintArea (pixel) int	q_ap03Flux (nJy) double	q_ap03Flux_flag boolean	q_ap03FluxErr (nJy) double	q_ap06Flux (nJy) double	q_ap06Flux_flag boolean	q_ap06FluxErr (nJy) double	q_ap09Flux (nJy) double	q_ap09Flux_flag boolean
-32.8731327	63.0168574	1	false	false	false	true	true	true	true	true	143	61.2333679	false	8.6223576	135.1218886	false	17.3136285	164.6818271	false
-32.8752928	63.0172388	0	false	true	true	true	false	true	true	true	651	109.4846596	false	8.7796789	197.0007136	false	17.5803744	229.8476385	false
-32.8759299	63.017164	0	false	true	true	true	false	true	true	true	650	317.3165384	false	8.9517221	466.7059158	false	17.6773116	494.1617681	false
-32.8757029	63.0205613	0	false	false	true	false	true	true	false	true	81	21.2741645	false	8.7357334	61.4612223	false	17.5722524	110.2749747	false
-32.874725	63.0161931	0	false	true	true	true	false	true	true	true	2407	47.1925192	false	8.5785793	71.6698694	false	17.3014455	80.403129	false
-32.8751307	63.0151232	0	false	true	true	true	false	true	true	true	3508	2367.2119154	false	10.2437228	4152.2584567	false	18.9773117	4832.0008339	false
-32.8756587	63.0152527	0	false	true	true	true	false	true	true	true	3333	144.2648622	false	8.896067	277.5704323	false	17.8996456	319.2882308	false
-32.8744746	63.0155065	0	false	true	true	true	false	true	true	true	3474	188.4251397	false	8.7756968	406.0152593	false	17.5145565	484.4950779	false
-32.8737537	63.0157199	0	false	true	true	true	false	true	true	true	2349	26.2440227	false	8.5990249	41.0337997	false	17.2829104	41.2700127	false
-32.8744004	63.0167379	0	false	true	true	true	false	true	true	true	2355	52.5095027	false	8.6332981	83.8199298	false	17.3014404	79.0942695	false



Prompt Data Products :

Products generated by the prompt processing on a nightly/daily basis for time-dependents phenomena



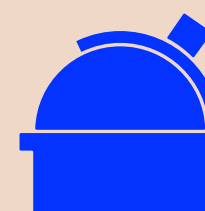
Processed Visit Images
Difference Images



DIASource → Fink
DIAObject and SSObjects
Almost real time database

Data Release Products :

Products generated by the annual process and it uses all the data collected

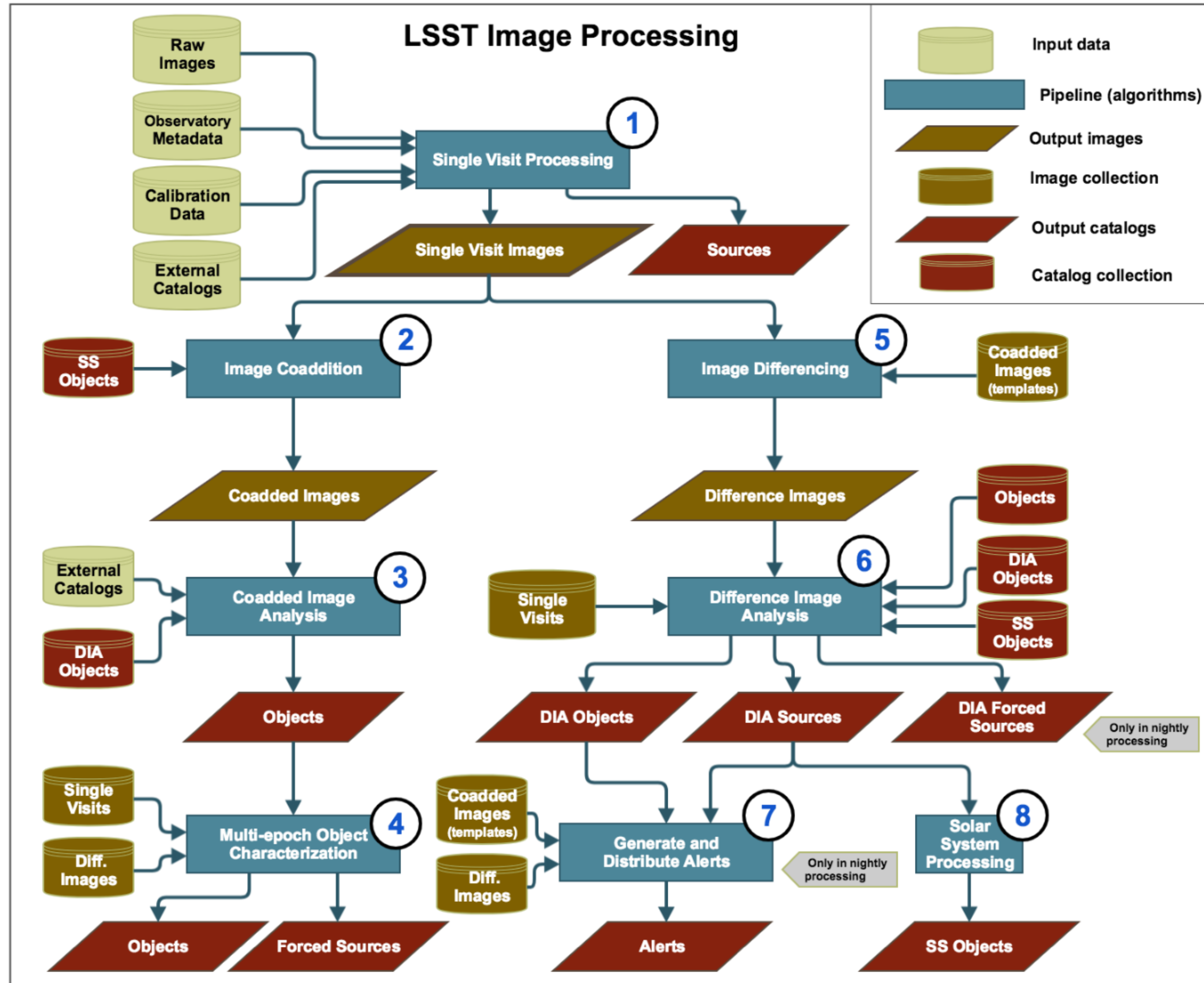


Processed Visit Images
Coadded images



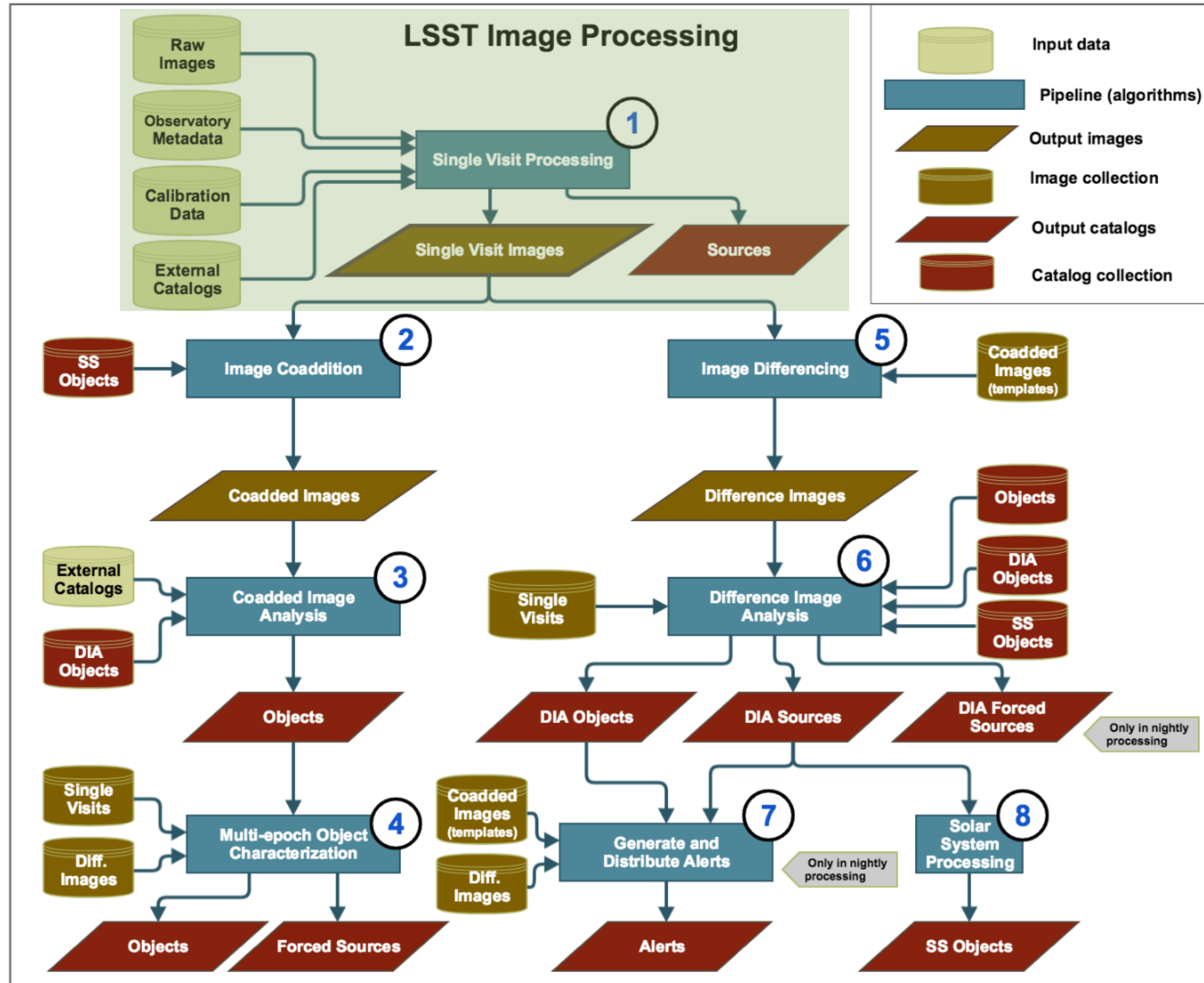
Source and Object
ForcedSource
DIAObject and SSObjects
Static Database

Images and Catalog



Images and Catalog

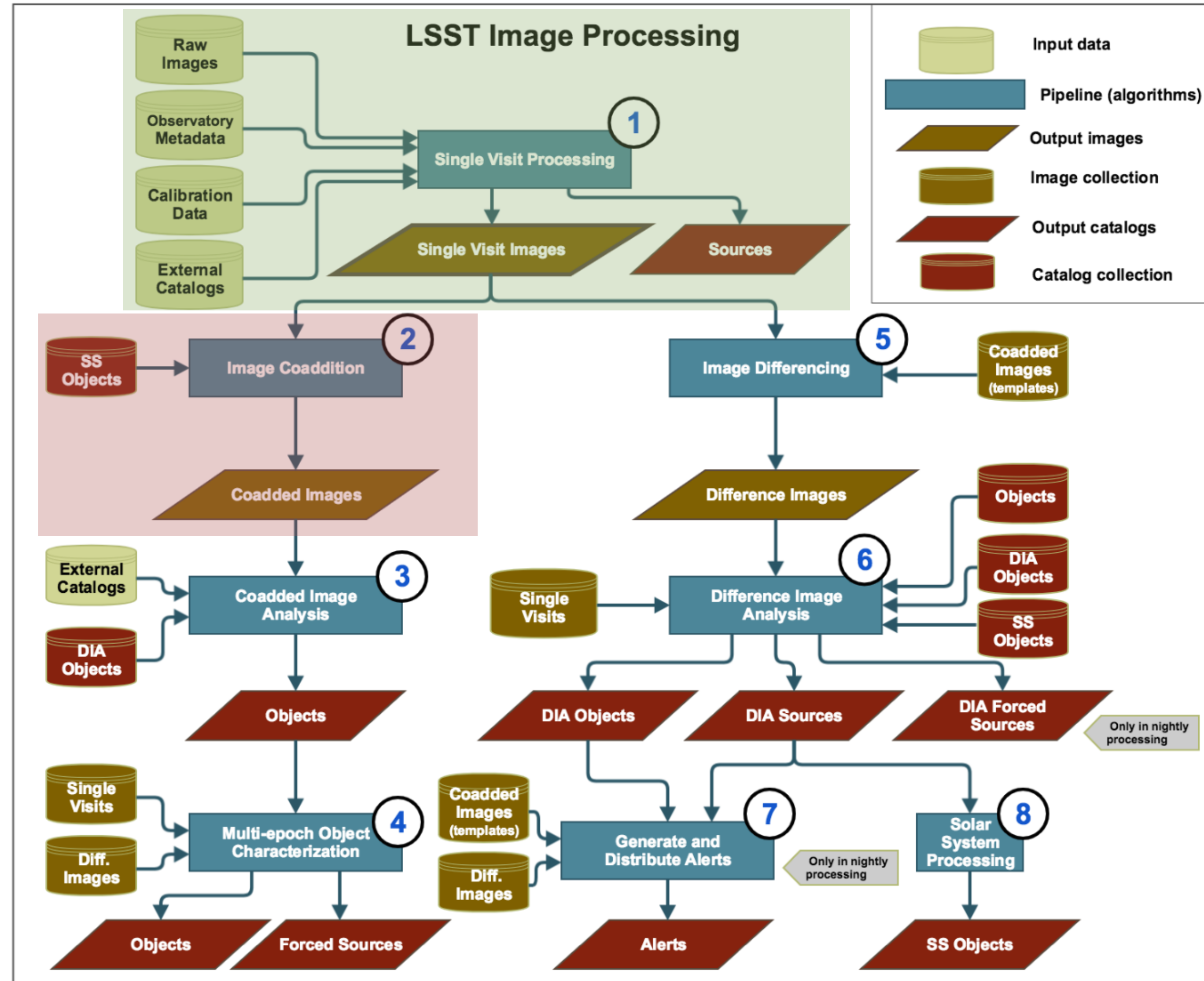
From Raw to
Processed Visit Images
(PVI a.k.a. Calexp)
Source Table



Images and Catalog

From Raw to
Processed Visit Images
(PVI a.k.a. Calexp)
Source Table

From PVI to Coadd

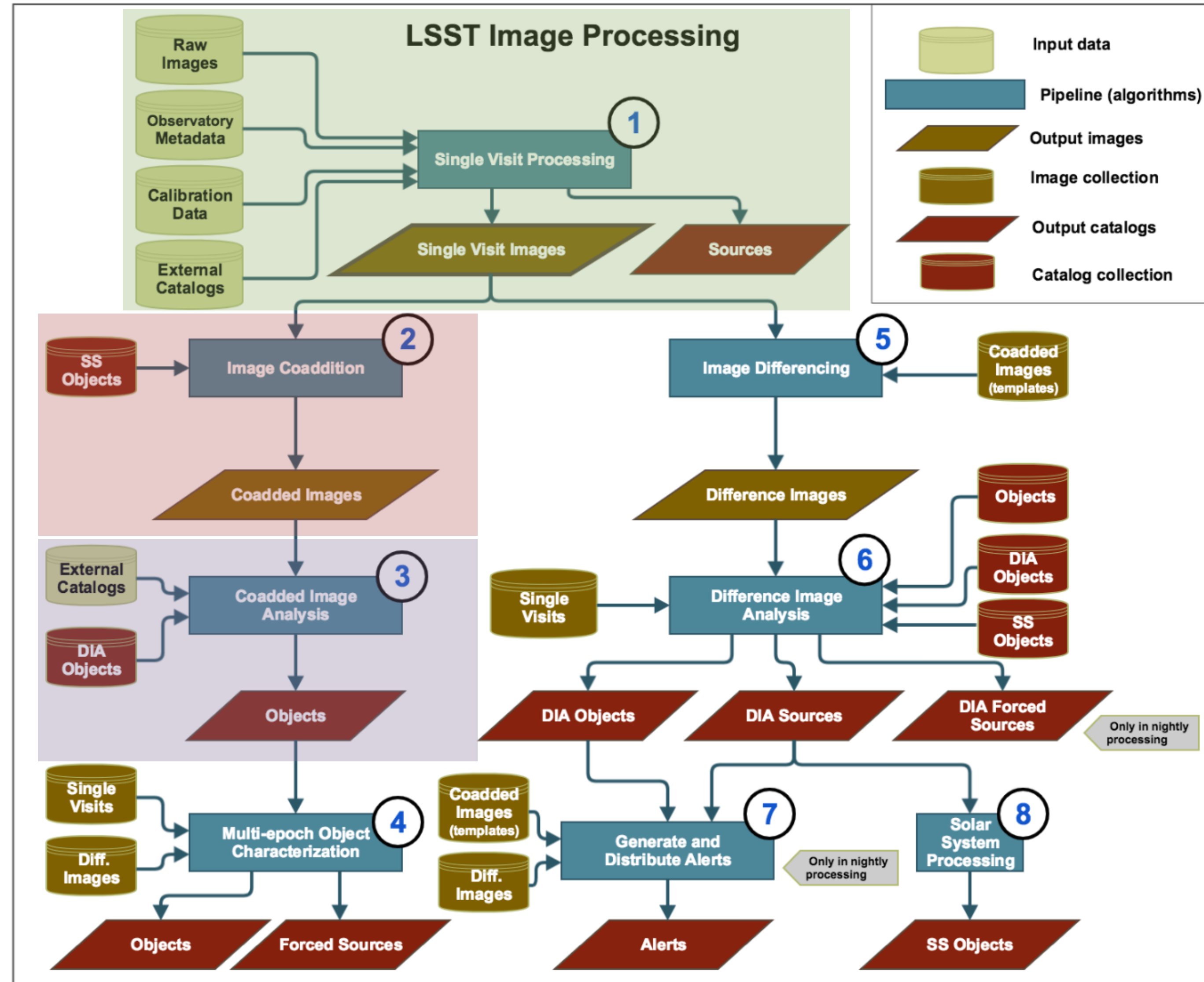


Images and Catalog

From Raw to
Processed Visit Images
(PVI a.k.a. Calexp)
Source Table

From PVI to Coadd

Object Table



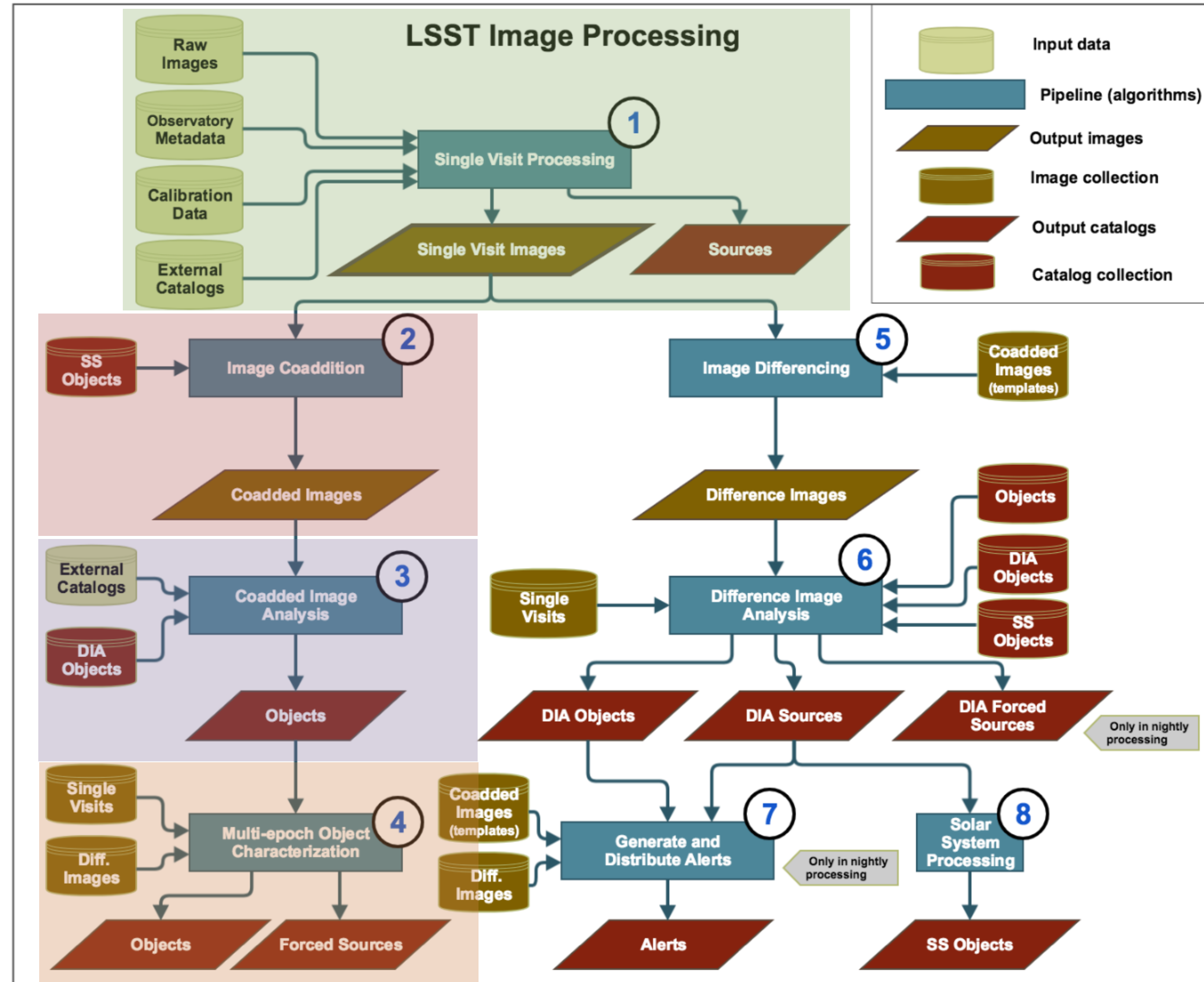
Images and Catalog

From Raw to
Processed Visit Images
(PVI a.k.a. Calexp)
Source Table

From PVI to Coadd

Object Table

Forced Source Table



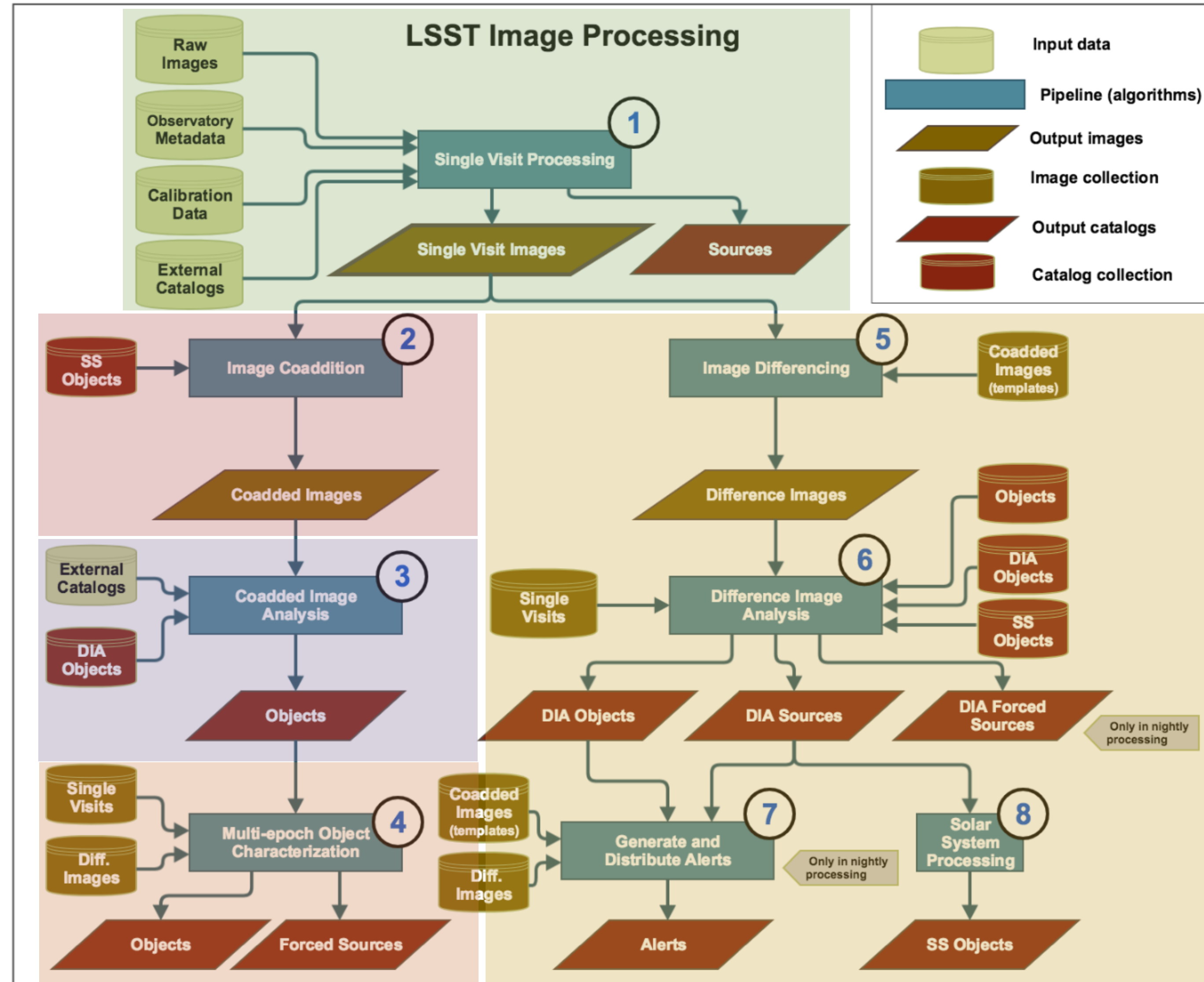
Images and Catalog

From Raw to
Processed Visit Images
(PVI a.k.a. Calexp)
Source Table

From PVI to Coadd

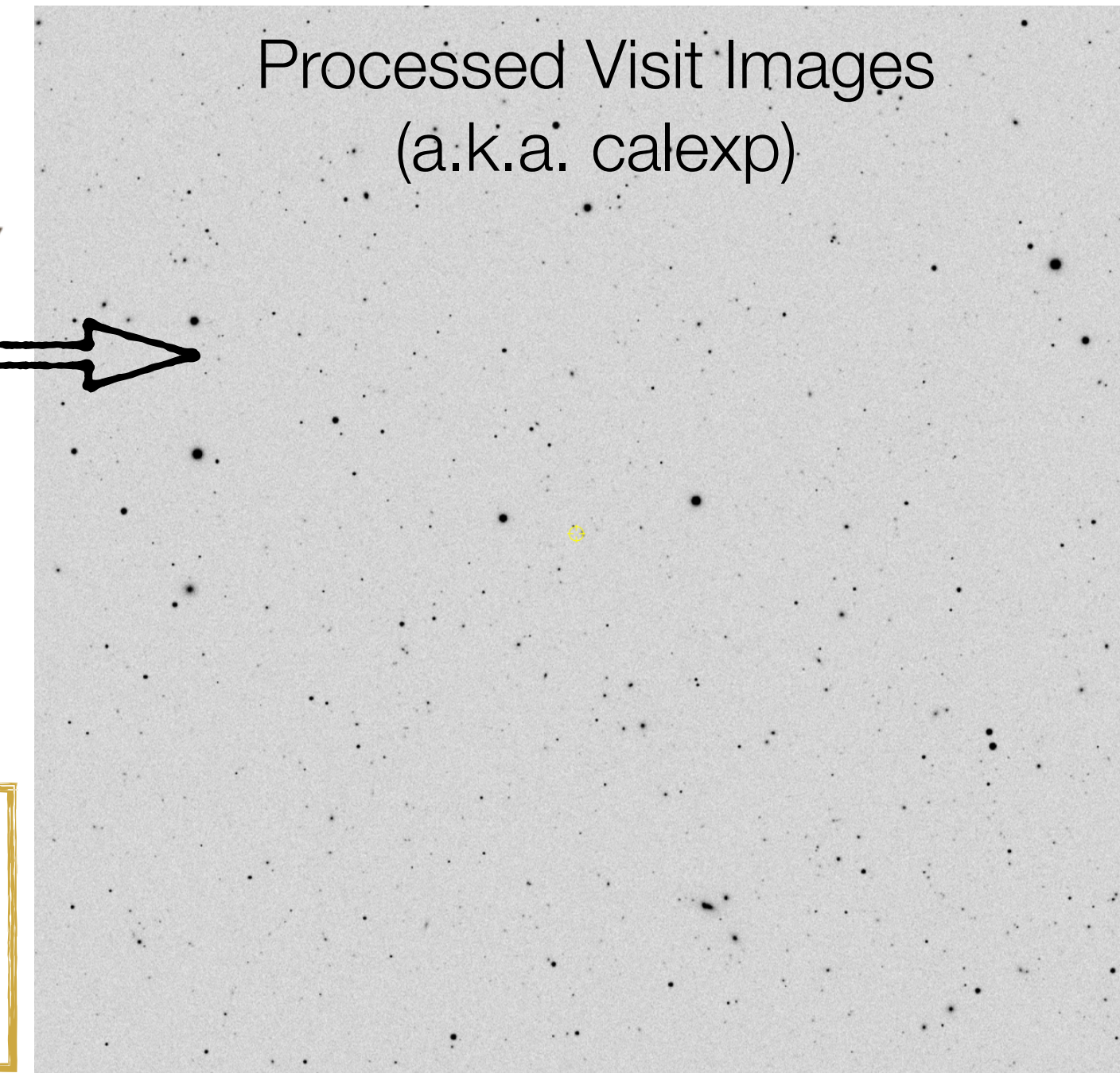
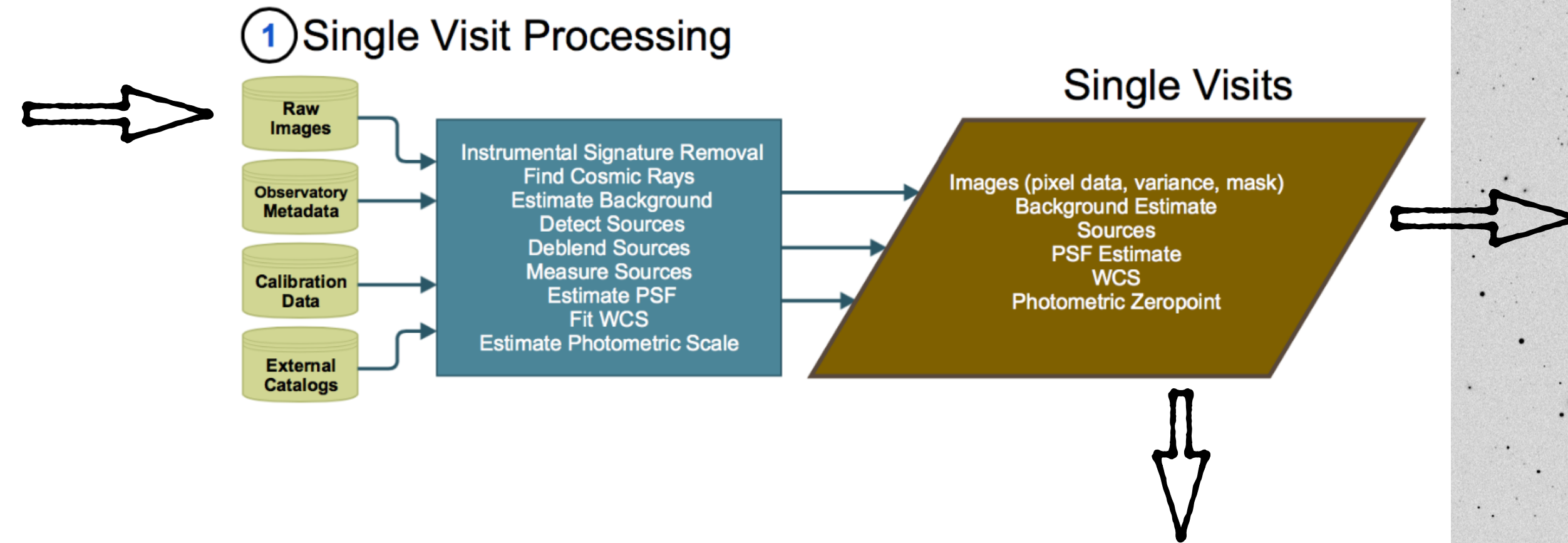
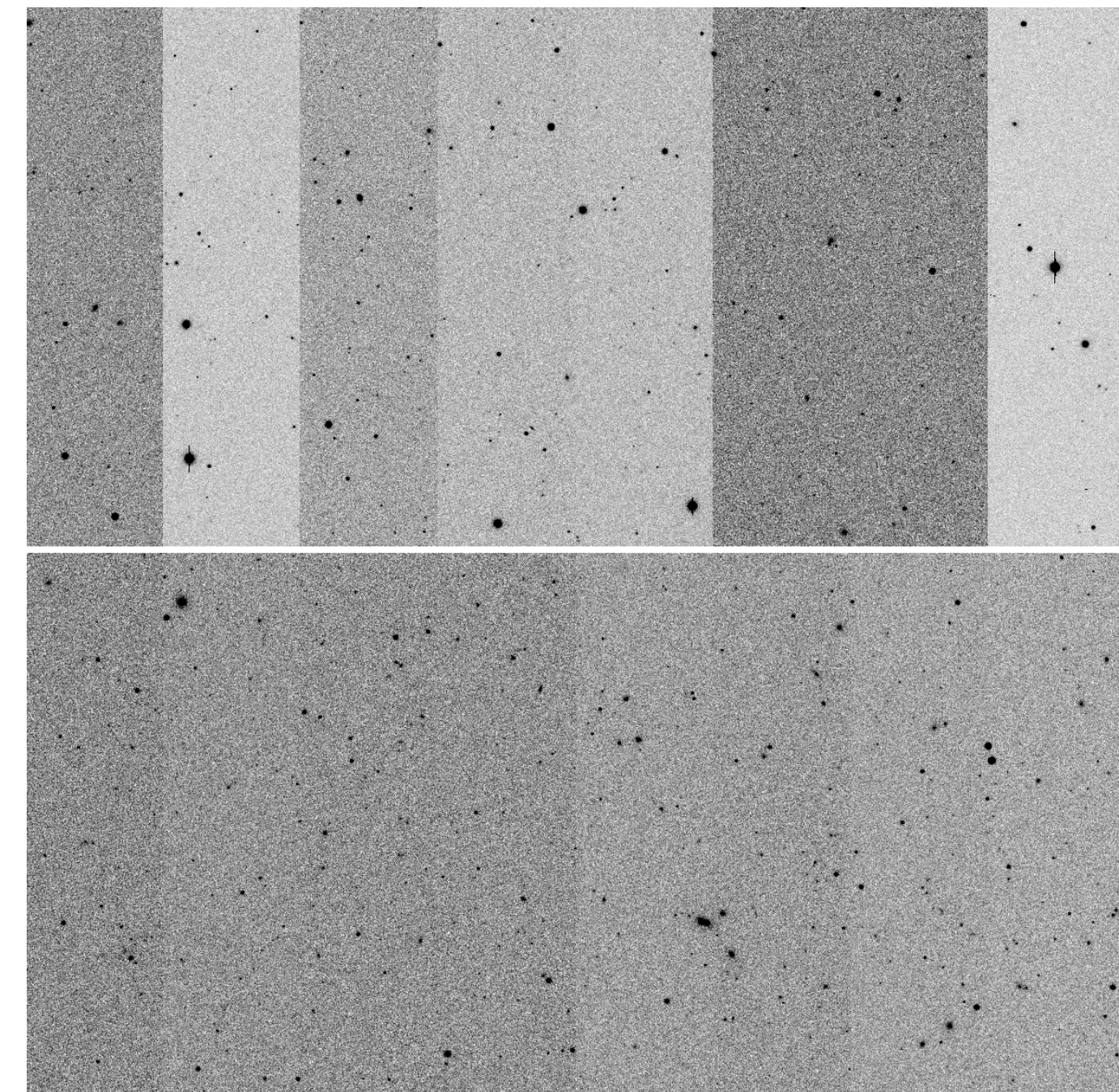
Object Table

Forced Source Table



Prompt Processing:
From PVI to DIA Tables and Alerts

Images and Catalog



The **Source** table stores properties of detections (instrumental fluxes and shapes) of sources independently detected, deblended, and measured on all visits.

sourceId: unique source identifier
objectId: ID of the object associated
ccdVisitId: ID of CCD and Visit

apFlux: calibrated aperture flux
psFlux: calibrated point source model flux
calibFlux: calibrated flux within 12.0-pixel aperture

gaussianFlux: flux from Gaussian Flux algorithm
sky: estimated background surface brightness
extendedness: 0 → point source, 1 → extended

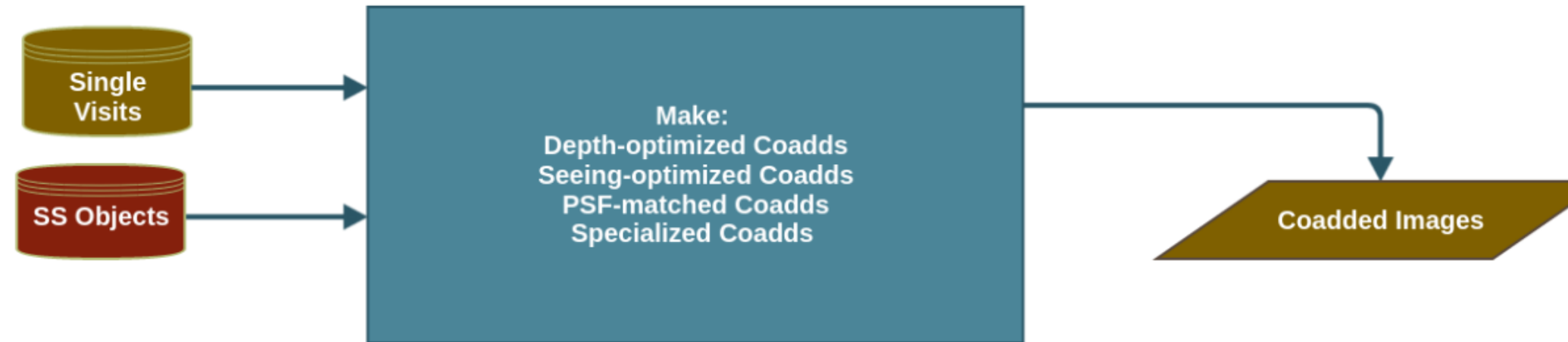
ap03Flux (nJy) double	ap03Flux_flag boolean	ap03FluxErr (nJy) double	ap06Flux (nJy) double	ap06Flux_flag boolean	ap06FluxErr (nJy) double	ap12Flux (nJy) double	ap12Flux_flag boolean	ap12FluxErr (nJy) double	ap70Flux (nJy) double	ap70Flux_flag boolean	ap70FluxErr (nJy) double	band char	calibFlux (nJy) double	calibFluxErr (nJy) double	ccdVisitId long	coord_dec (deg) double	coord_ra (deg) double	gaussianFlux (nJy) double	gaussianFlux_flag boolean	gaussianFluxErr (nJy) double	psfFlux (nJy) double	psfFlux_apCorr double	psfFlux_apCorrErr double	sourceId long
2331.4968841	false	170.4638405	4202.525079	false	336.7087489	7130.4884555	false	672.1985989	12810.9897112	false	3925.7283179	i	7130.4884555	672.1985989	965396136	-32.8751162	63.0150962	5608.2157196	false	379.6063468	3832.4355092	0.9910757	0.0	51829310397559804
2582.0020212	false	228.2974128	5001.048114	false	453.0381009	6300.450902	false	906.8518319	7536.8890729	false	5317.3702094	i	6300.450902	906.8518319	1198805186	-32.8751507	63.0151395	5801.7235427	false	446.0260211	3585.1952158	0.9928332	0.0	64360363351815164
1786.2589324	false	107.4406122	3792.5621292	false	211.5539865	4945.998075	false	417.9327846	6635.3319938	false	2432.5520422	r	4945.998075	417.9327846	1193701076	-32.8751438	63.0151347	5008.5647501	false	250.2580398	3296.1180922	0.9871098	0.0	64086338532750288
1671.8113392	false	64.9910743	3793.5043954	false	124.2411657	5868.1474858	false	238.7145227	7874.7850522	false	1360.44959	g	5868.1474858	238.7145227	466321174	-32.8751242	63.0151258	5613.3134301	false	179.7833763	4067.4653385	0.9830501	0.0	25035427397029200
389.1767502	false	59.4627145	541.9344706	false	116.8408131	871.211735	false	234.0471161	2018.503739	false	1409.2572964	g	871.211735	234.0471161	960245179	-32.8749463	63.0189649	535.823795	false	79.9921265	621.7559421	0.9898801	0.0	51552770499333400
2060.2164423	false	67.024701	3901.0349794	false	125.3230669	5458.2710829	false	239.9253476	6499.1088424	false	1371.7552913	g	5458.2710829	239.9253476	960245179	-32.8751275	63.0151254	4772.4095088	false	142.8201676	3671.1507359	0.9899399	0.0	51552770499333400
2060.177917	false	67.0287333	3894.4686803	false	125.3185151	5240.57078	false	239.9218939	5748.7848373	false	1371.7545082	g	5240.57078	239.9218939	960245179	-32.8751271	63.0151257	4731.2724822	false	141.8041196	3665.5565595	0.9899399	0.0	51552770499333588
2661.2174871	false	185.2956923	4550.5135727	false	364.8225928	7088.3134744	false	728.3708815	11289.5675906	false	4258.2085731	i	7088.3134744	728.3708815	1229687125	-32.8751333	63.0151259	4886.599675	false	320.512883	3607.6158443	0.998271	0.0	66018324827340888
2744.6558582	false	274.7206175	3930.2145213	false	546.637078	5352.7396406	false	1097.9055662	163.2382922	false	6443.5896279	i	5352.7396406	1097.9055662	211200141	-32.8751463	63.0151031	4753.941438	false	443.5515887	3553.7146409	0.9970213	0.0	11338721231319944
2783.66662	false	297.2399335	4346.0431934	false	591.9650015	6148.5914168	false	1189.0992819				i	6148.5914168	1189.0992819	731792013	-32.8751203	63.0151256	4025.6629504	false	377.5353412	3482.0006768	1.0001207	0.0	39287784541362764
-284.3011212	true	289.5361308	-319.0401538	true	588.975413	1910.376355	true	1188.2413131				i	1910.376355	1188.2413131	731792013	-32.876099	63.0185414		true	-142.3228164	0.9998898	0.0	39287784541362774	

Images and Catalog

Processed Visit Images
(PVI a.k.a. calexp)

Coadded images

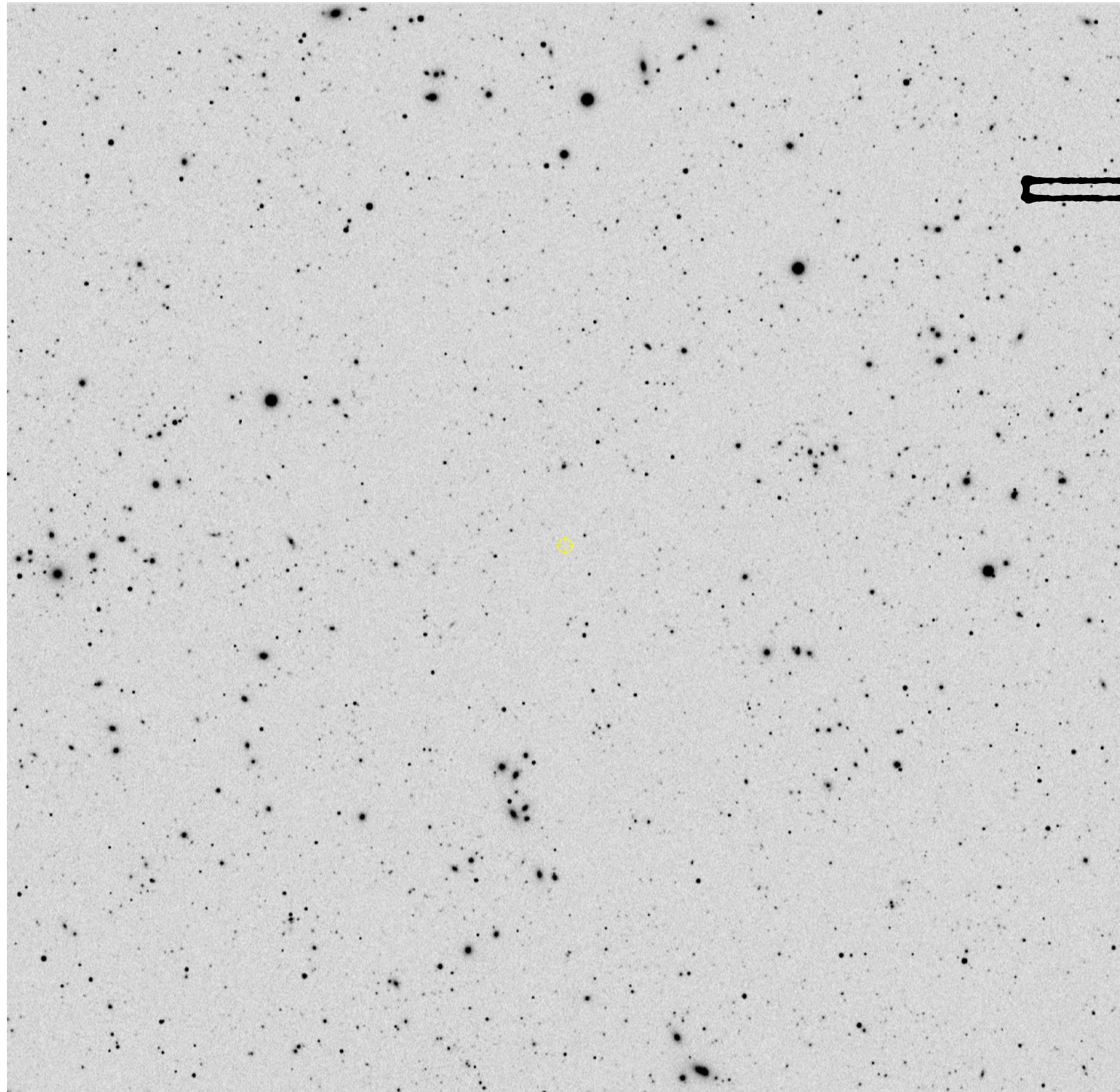
2 Image Coaddition



There are different kinds of coadd images:

- DeepCoad to emphasize depth at the possible expense of seeing
- GoodSeeingCoadd to emphasize image quality at the possible expense of depth

Images and Catalog



3 Coadd Image Analysis



Object Table:
Properties of the astronomical objects detected and measured on the deep coadded images.

objectId: ID of the object associated
tract & **patch** IDs

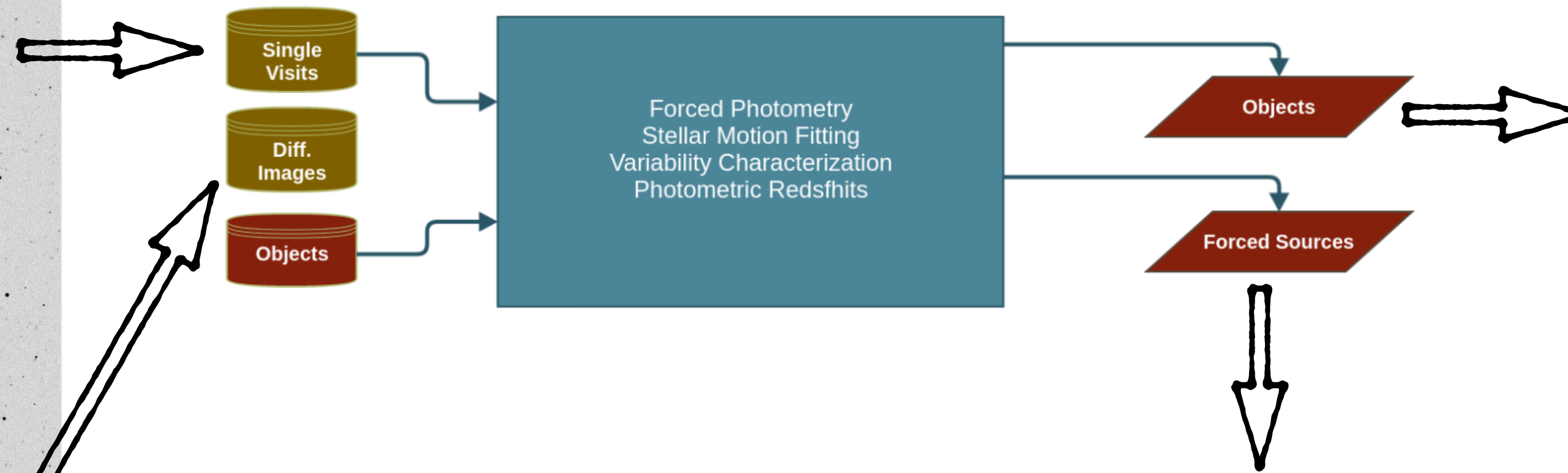
<band> **_apFlux:** per band aperture flux
<band> **_calibFlux:** calibrated flux within 12.0-pixel aperture
<band> **_kronFlux:** Flux from Kron Flux algorithm.

blendedness_abs: Measure of how much the flux is affected by neighbours
detect_isPrimary: True if source has no children

coord_dec (deg) double	coord_ra (deg) double	deblend_nChild int	deblend_skipped boolean	detect_fromBlend boolean	detect_isDeblendedModelSource boolean	detect_isDeblendedSource boolean	detect_isIsolated boolean	detect_isPatchInner boolean	detect_isPrimary boolean	detect_isTractInner boolean	footprintArea (pixel) int	q_ap03Flux (nJ) double	q_ap03Flux_flag boolean	q_ap03FluxErr (nJ) double	q_ap06Flux (nJ) double	q_ap06Flux_flag boolean	q_ap06FluxErr (nJ) double	q_ap09Flux (nJ) double	q_ap09Flux_flag boolean
-32.8048634	62.9988907	2	false	false	false	false	false	true	false	true	332	163.3777694	false	8.3542251	286.6498981	false	16.6987454	336.7719955	false
-32.8043377	63.001425	1	false	false	false	true	true	true	true	true	258	54.5744402	false	8.2716239	101.1038211	false	16.6439649	104.9203893	false
-32.8075021	62.9994376	1	false	false	false	true	true	true	true	true	272	151.8884085	false	8.3457481	203.7373866	false	16.6485969	230.3997135	false
-32.8060212	63.002288	3	false	false	false	false	false	true	false	true	1098	443.9846553	false	8.4393867	899.1971218	false	16.7198203	1081.3358781	false
-32.8079362	63.001379	4	false	false	false	false	false	true	false	true	707	125.9270413	false	8.3342443	183.1358663	false	16.6909749	219.5271976	false
-32.8042645	63.0024495	1	false	false	false	true	true	true	true	true	77	27.1511958	false	8.2537336	54.7929584	false	16.5696923	70.544996	false
-32.8042616	63.00248	0	false	false	true	false	true	true	false	true	121	23.776075	false	8.2498038	31.959098	false	16.5772827	47.3087787	false
-32.8049766	62.9983161	0	false	true	true	true	true	true	true	true	450	46.9474879	false	8.3167673	67.2241086	false	16.6992358	75.2535069	false
-32.8048915	62.9988778	0	false	true	true	true	true	true	false	true	450	164.4141311	false	8.3877669	272.5195499	false	16.6807144	294.1658008	false
-32.8075039	62.9994427	0	false	false	true	false	true	true	true	true	380	149.8926932	false	8.3476757	221.0928323	false	16.645486	239.4348651	false
-32.8052937	63.0024357	0	false	true	true	true	true	true	false	true	1684	53.2268538	false	8.2593715	86.8970138	false	16.5712169	96.551871	false
-32.8070573	63.003081	0	false	true	true	true	true	true	false	true	1665	174.147759	false	8.3485649	270.1290817	false	16.6623371	300.1786437	false
-32.8060256	63.0022964	0	false	true	true	true	false	true	true	true	1983	468.2712624	false	8.4405751	894.4688685	false	16.7136945	1060.7676277	false

Images and Catalog

④ Multi-Epoch Object Characterization



Object Table (Post-Processing):
To include multi-epoch properties

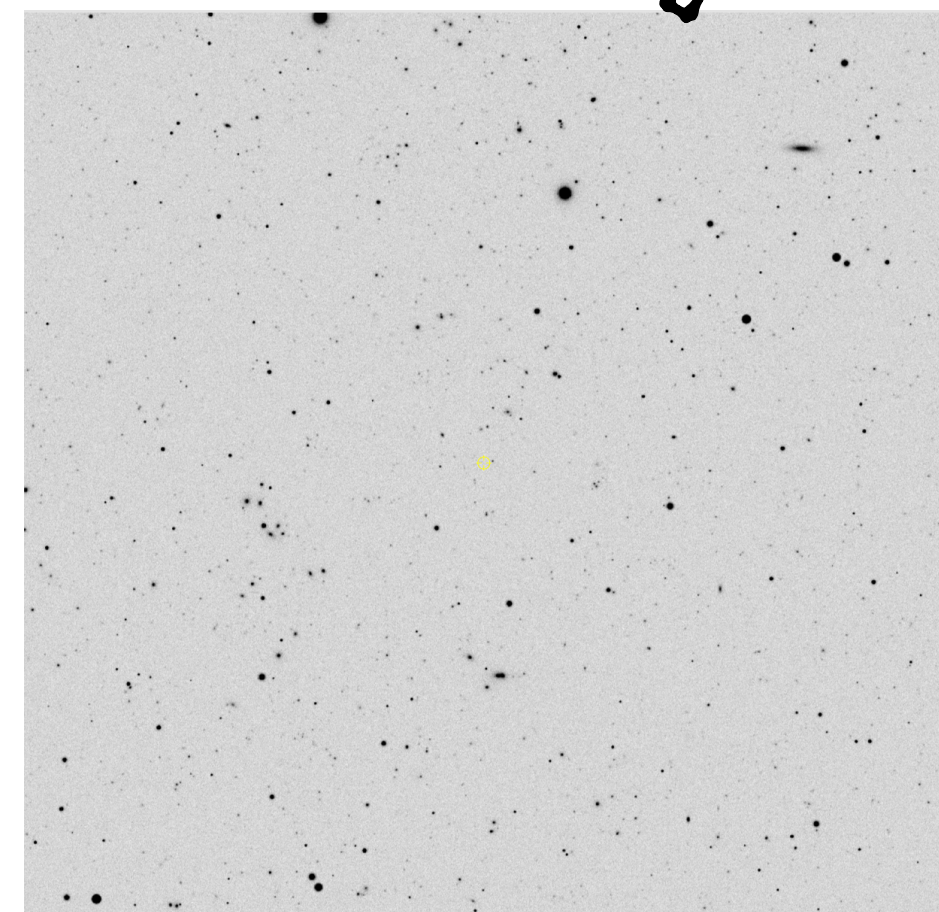
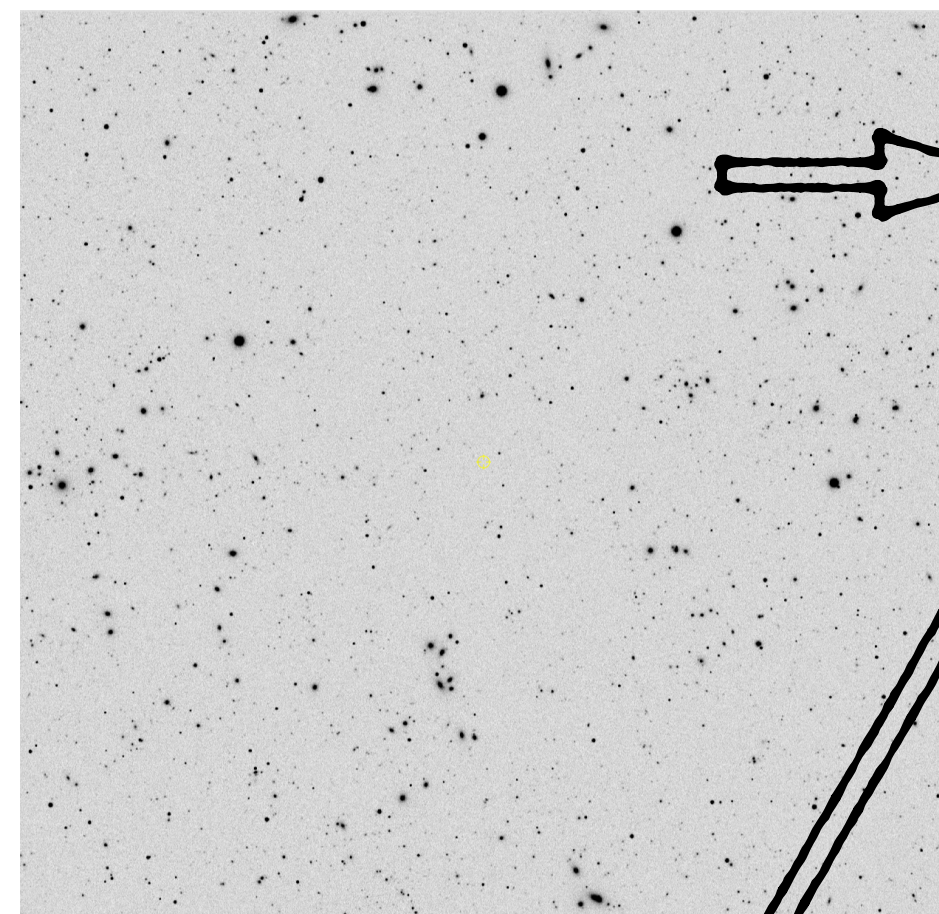
ForcedSource Table

Forced-photometry measurements on individual single-epoch visit images and difference images, based on and linked to the entries in the Object table. Point-source PSF photometry is performed, based on coordinates from a reference band chosen for each Object

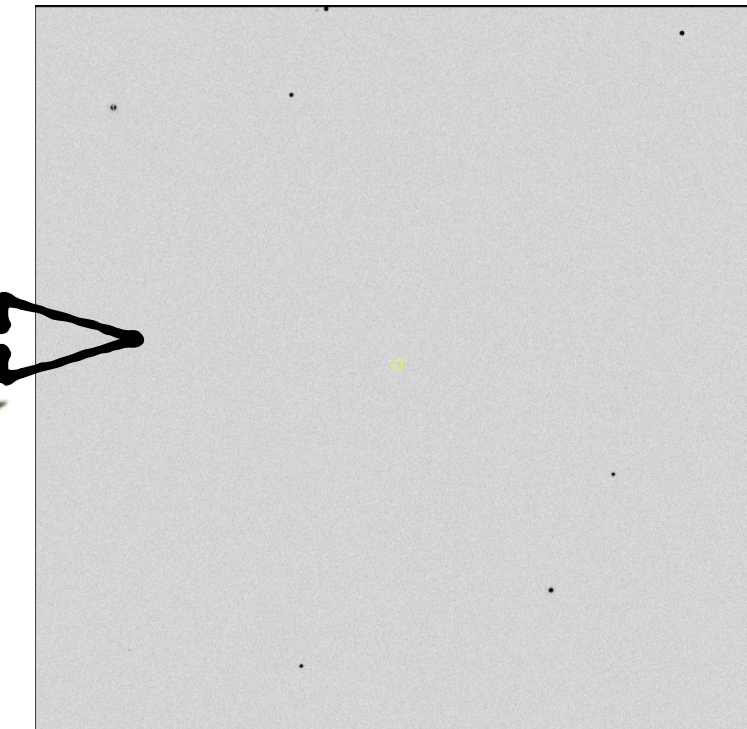
objectId: ID of the object associated
ccdVisitId: ID of CCD and Visit
psFlux: point source model flux on direct image
psDiffFlux: point source model flux on diff image

objectId	band	psFlux (nJy)	psFluxErr (nJy)	psDiffFlux (nJy)	psDiffFluxErr (nJy)	ccdVisitId	forcedSourceId	detect	isPrimary
long	char	double	double	double	double	long	long		boolean
18240106256	r	303.353464	206.9903651	236.7689555	206.3584458	1182658158	634934763869705308	true	
18240106256	r	259.707522	207.0617152	179.7413251	206.3235743	1182658158	634934763869710186	true	
18240106256	r	484.775551	207.2658213	5.4255478	206.3713387	1182658158	634934763869710223	true	
18240106256	r	94.9875868	206.1482489	-16.8308356	205.3263214	1182658158	634934763869710224	true	
18240106256	r	97.1621807	206.3160338	-51.0647592	205.6169905	1182658158	634934763869710226	true	
18240106256	r	-160.630768	205.4194625	-254.2276531	204.6266171	1182658158	634934763869710427	false	
18240106256	r	-136.922277	205.5340599	-181.0641715	204.6870967	1182658158	634934763869710394	true	
18240106256	r	189.985492	206.0226954	-35.2769596	205.2273015	1182658158	634934763869710393	true	
18240106256	r	184.899560	206.3259455	-245.7733782	205.5070085	1182658158	634934763869710261	false	
18240106256	r	1085.34010	208.6553703	16.9980999	207.9954465	1182658158	634934763869710285	true	
18240106256	r	236.318275	206.5712527	-88.5898613	205.7907543	1182658158	634934763869710286	true	

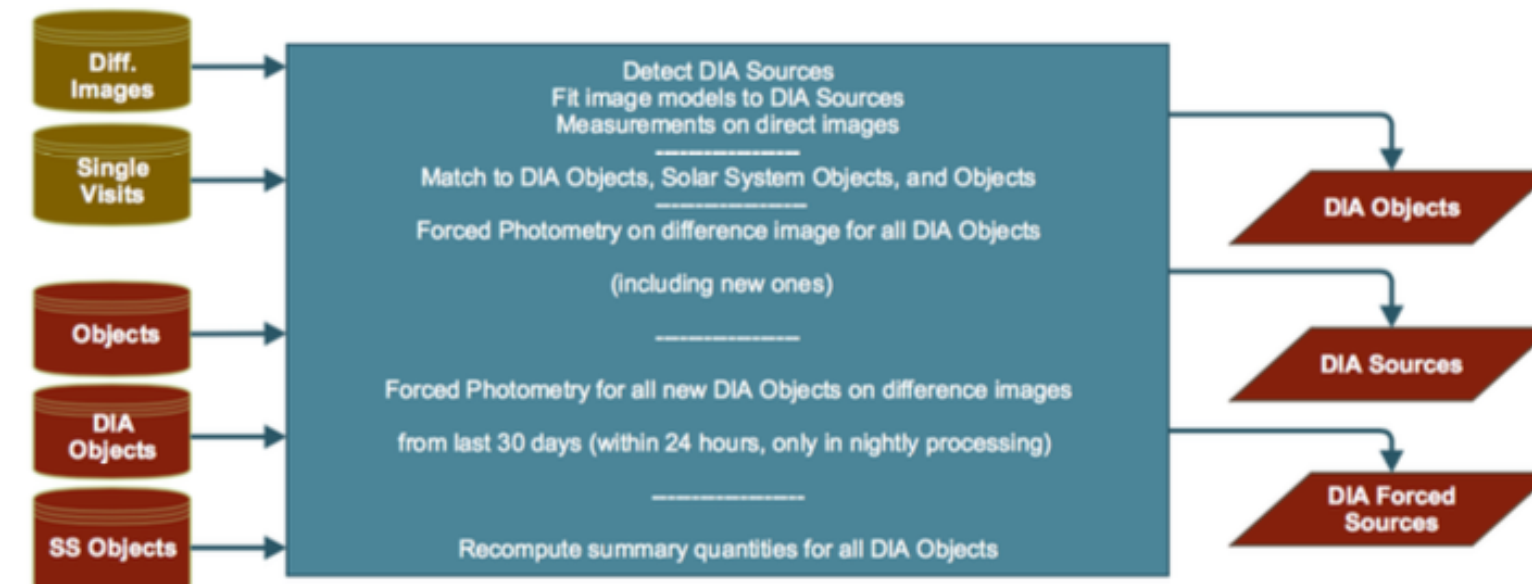
Images and Catalog



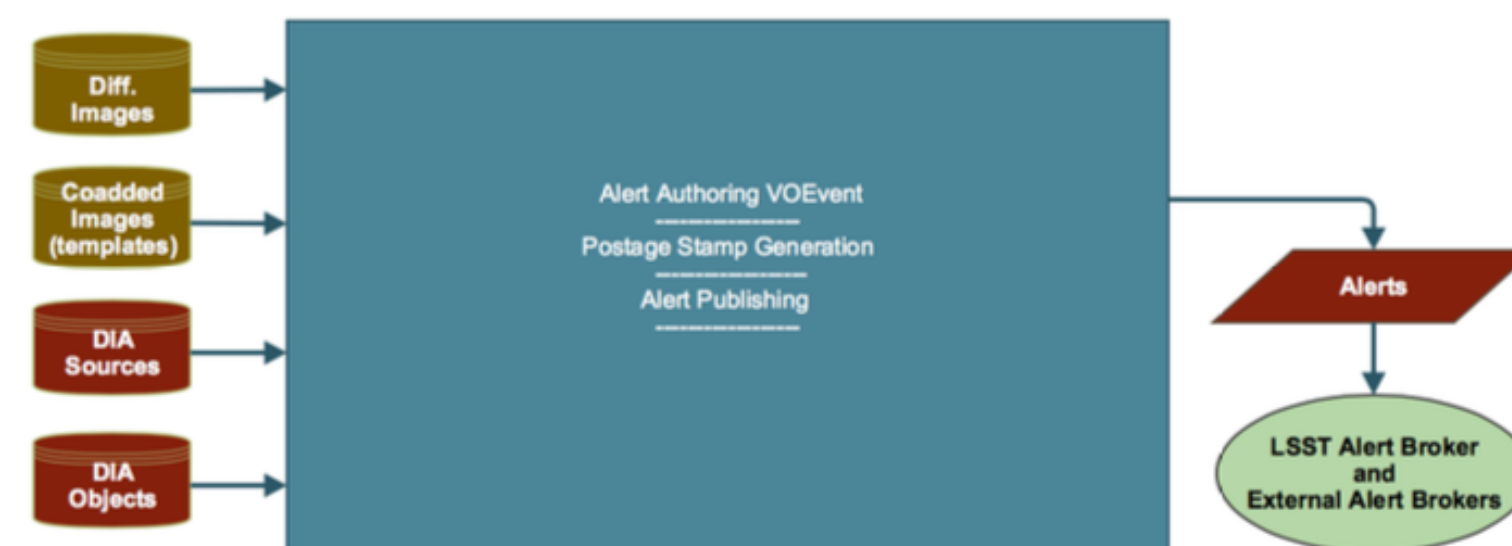
5 Image Differencing



6 Difference Image Analysis



7 Alert Generation and Distribution



DiaSource

Properties of transient-object detections on the single-epoch difference images.

apFlux: calibrated aperture flux

psFlux: calibrated point source model flux

totFlux: forced PSF flux on the direct image

DiaObject

Properties of time-varying astronomical objects based on association of data from one or more spatially-related DiaSource detections on individual single-epoch difference images.

<band>**PSFluxMin/Max/Mean/MAD**

<band>**TOTFluxMean**: weighted mean of the PSF flux forced photometered on the calibrated image

ForcedSourceOnDiaObject

Point-source forced-photometry measurements on individual single-epoch visit images and difference images, based on and linked to the entries in the DiaObject table

References

Data Products References

- *Data Products Definition Document* [LSE-163](#)
- *The Rubin Data Products, Abridged* <https://doi.org/k8d3>
- *LSST Data Product Categories* [LPM-231](#)
- *Data Management System (DMS) Requirements* [LSE-61](#)
- *Data Management Science Pipelines Design* [LDM-151](#)
- <https://www.lsst.org/about/dm/data-products>

Rubin Science Platform

- data-dev.lsst.eu
- data.lsst.cloud

Tutorial

- *DP0.2* : <https://is.gd/yY5iBC>
- *Introduction to the RSP API Aspect* : <https://is.gd/xs3pkL>
- *Data Access with Topcat*: <https://is.gd/rhleqm>

https://me.lsst.eu/mainetti/Rubin_Data_Products.mp4