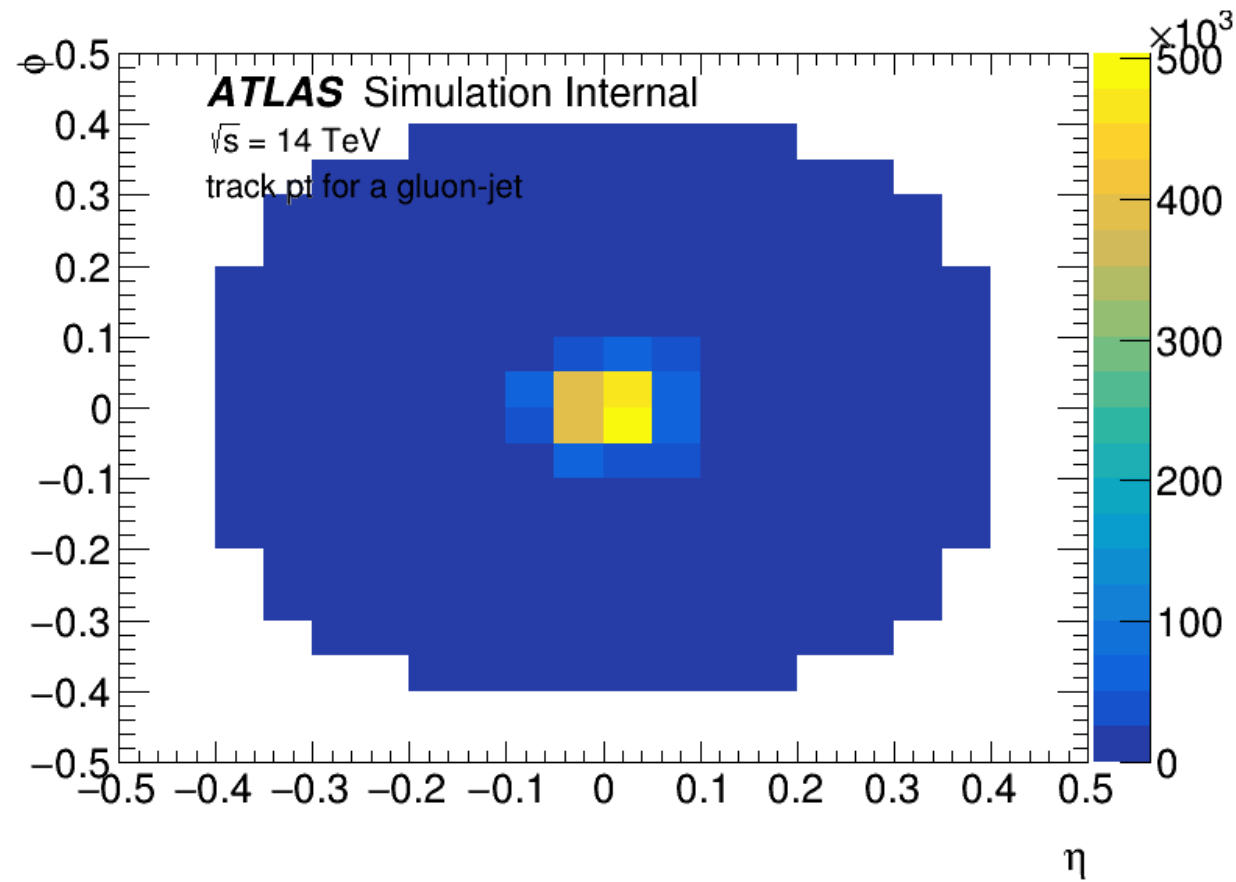
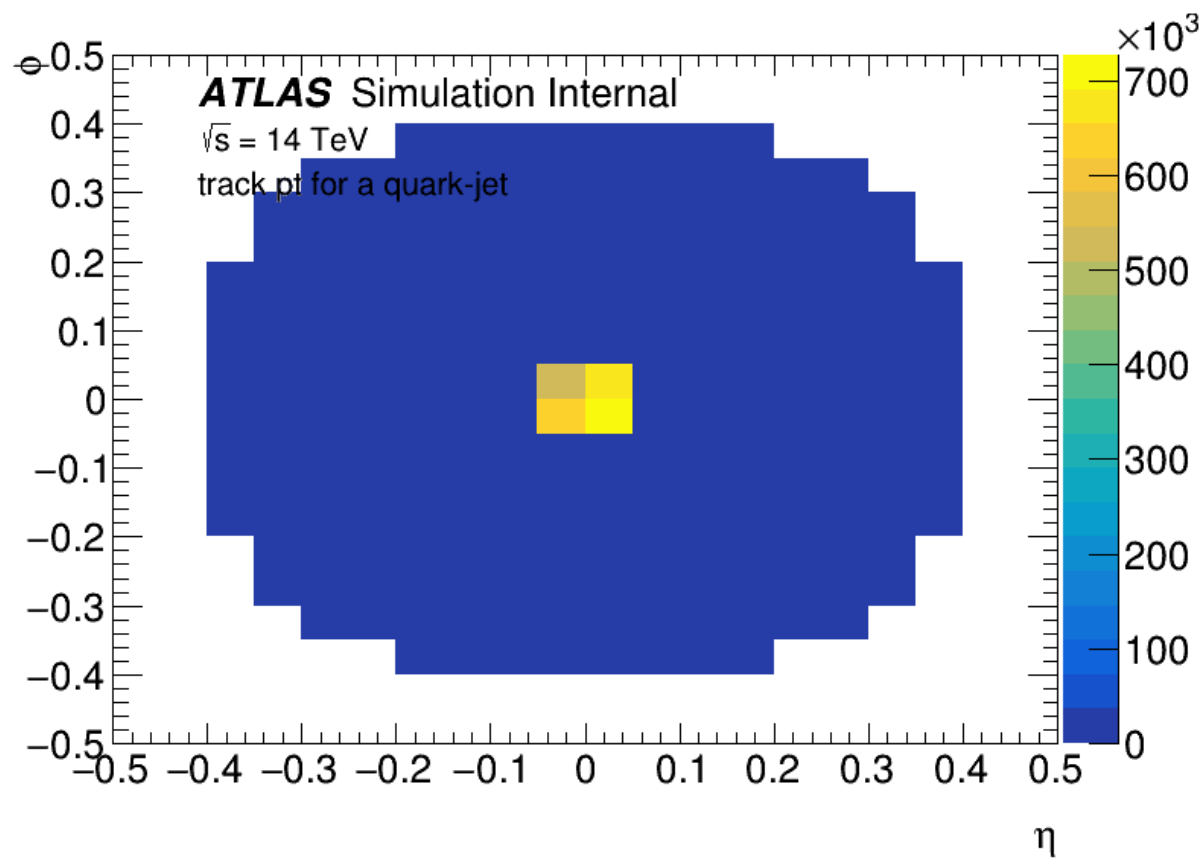


QG tag – Maps and next steps

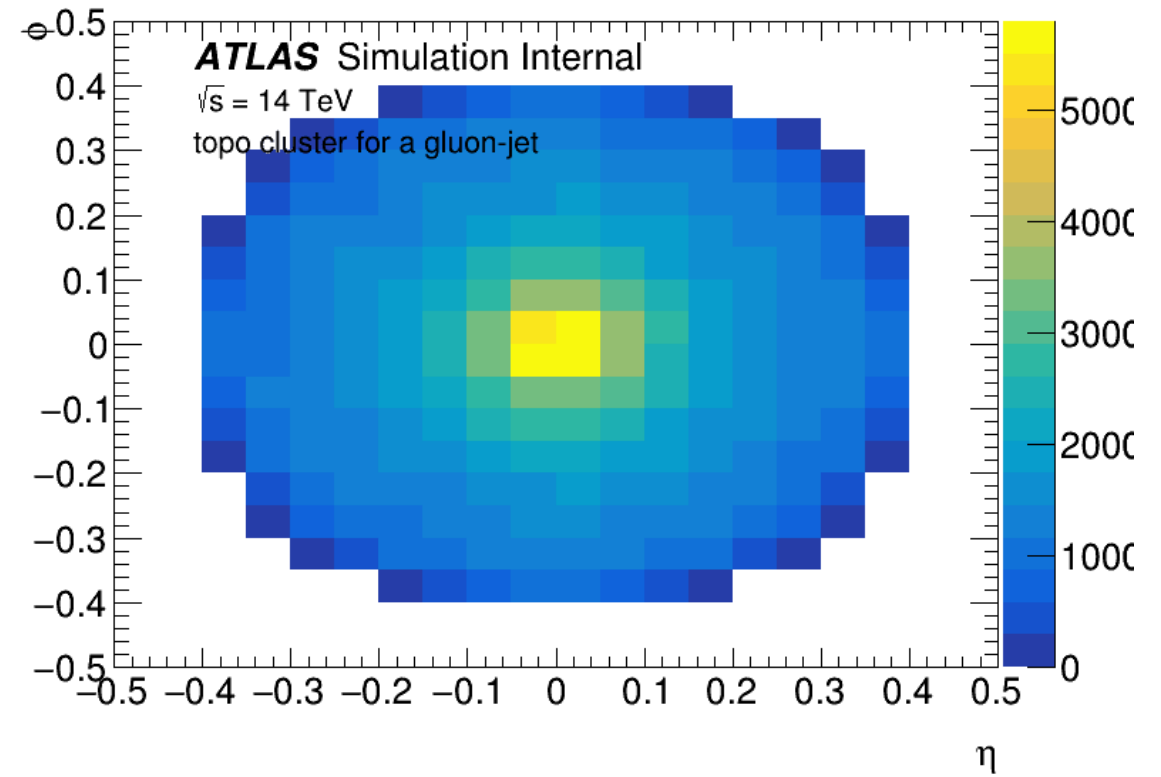
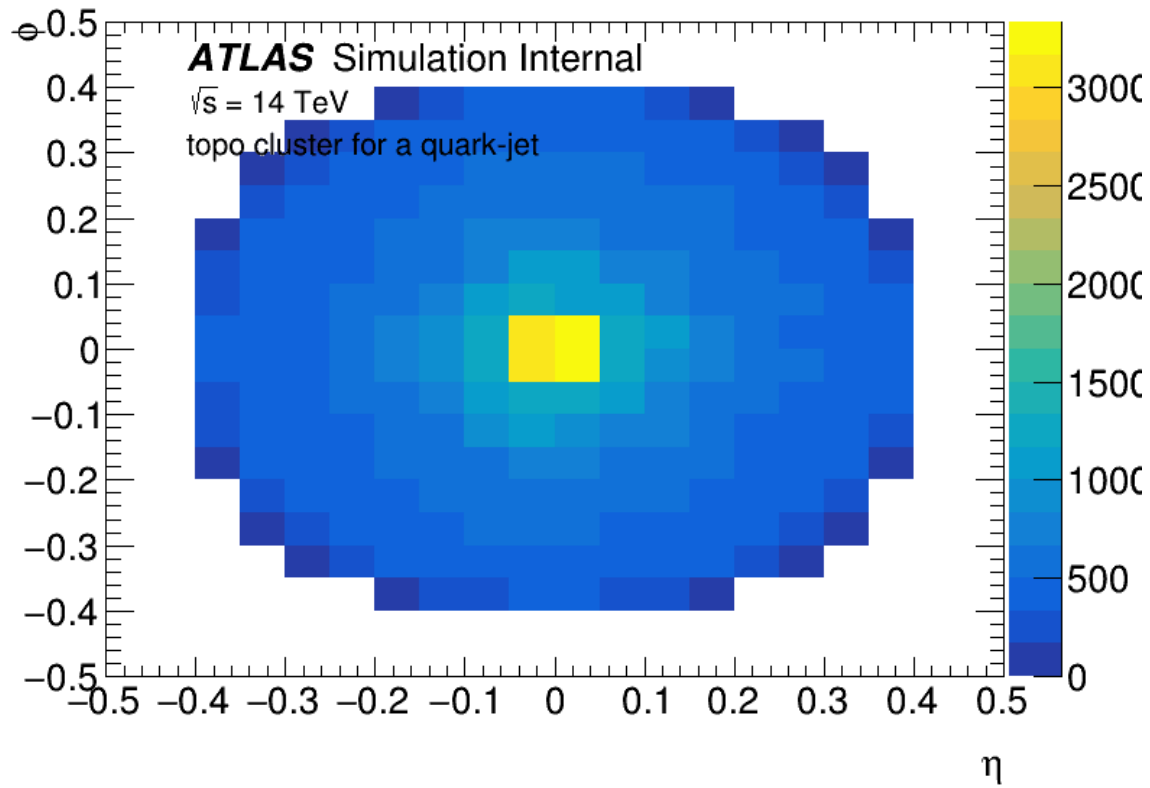
Florencia Castillo

Tracks



Topo clusters

three-dimensional topological clustering of individual calorimeter cell signals. The cluster formation follows cell signal-significance patterns generated by electromagnetic and hadronic showers.



Next steps

- Do more maps to explore the topology of quark and gluon jets --
> there is a prague group working on fancy ML
- Talk with Reina --> make R21 setup work for R22 as use this as baseline
 - I am in contact with the person who training the BDT
- I added topo cluster in the JETM1 deriv, I contacted to Matt and Ariel, still waiting for them to respond me
- Seeding plots to be shown in Connecting The Dots (CTD 2023)
 - <https://cds.cern.ch/record/2871852>