

Integrating Noisy Label Learning and Confidence Estimation

Navid Rabbani
Adrien Bartoli

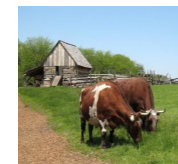
4 March 2024



Context

- **Label noise:**
Errors or inaccuracies in the labels or annotations assigned to data points in a supervised learning dataset.
- **Confidence estimation:**
Quantifying the level of certainty or confidence associated with the predictions made by a model.

Ambiguity in annotation



Label: Ox
(ImageNet Dataset)

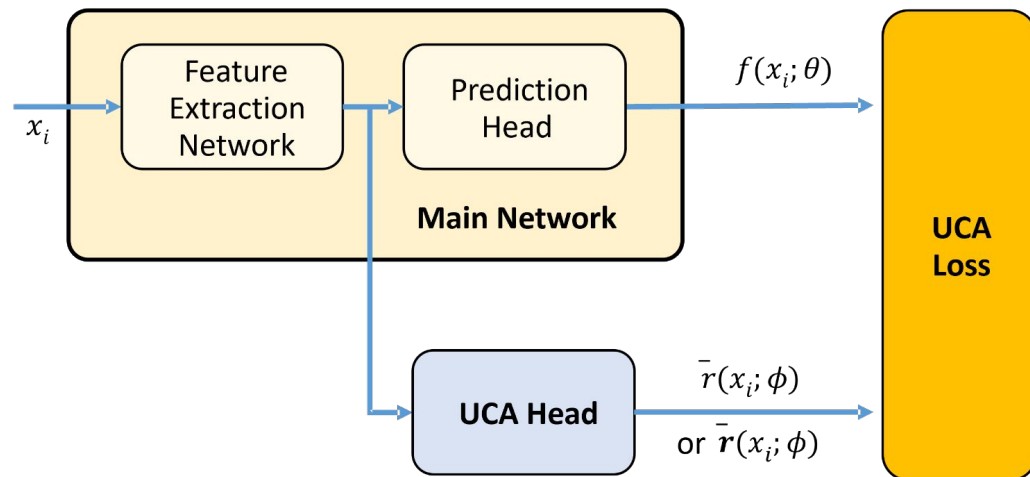
Poor quality images



Labels: Bird Car Horse Frog

(CIFAR-10 Dataset)

UCA: Unsupervised Confidence Approximation

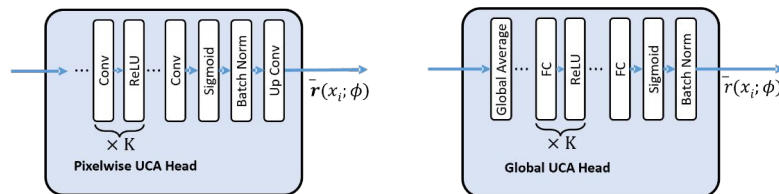


$$\theta^*, \phi^* = \operatorname{argmin}_{\theta, \phi} \sum_{i=1}^N \bar{r}(x_i; \phi) L(x_i, \bar{y}_i; \theta) + \beta D(w, u)$$

subject to:

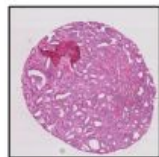
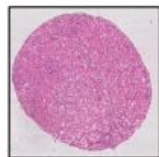
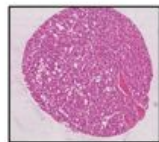
$$\bar{r}(x_i; \phi) > 0,$$

$$\sum_{i=1}^N \bar{r}(x_i; \phi) = NA$$

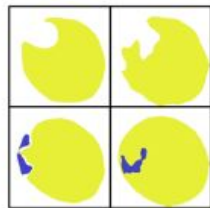
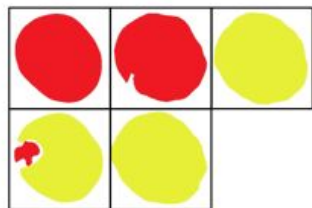
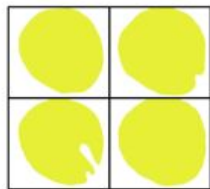


Test on microscopic image segmentation

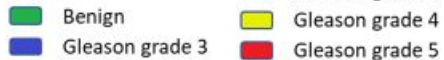
Images



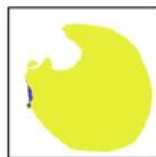
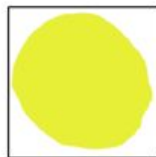
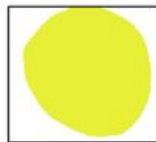
Multi-expert segmentation



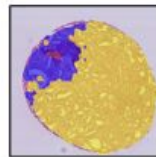
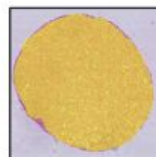
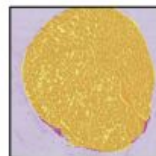
Annotation Colour Map



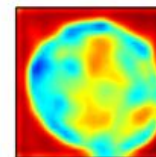
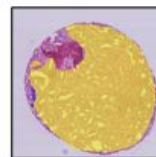
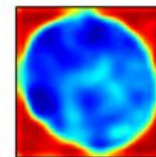
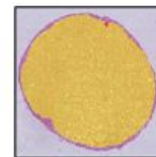
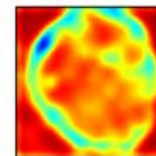
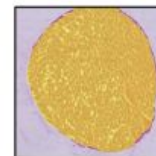
Consensus



SoTA



SoTA +UCA



Confidence Colour Map

