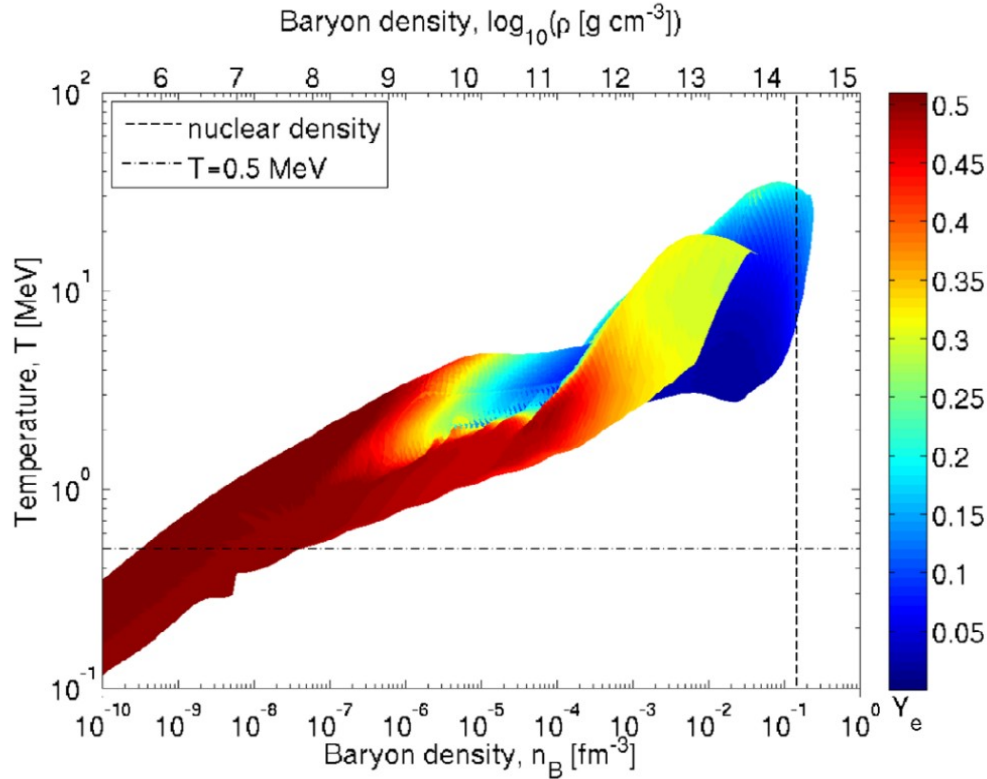
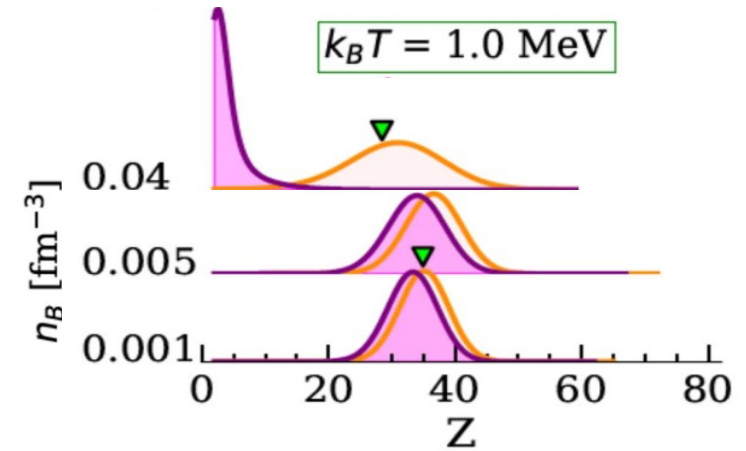


Clustering in compact stars (F.G.)

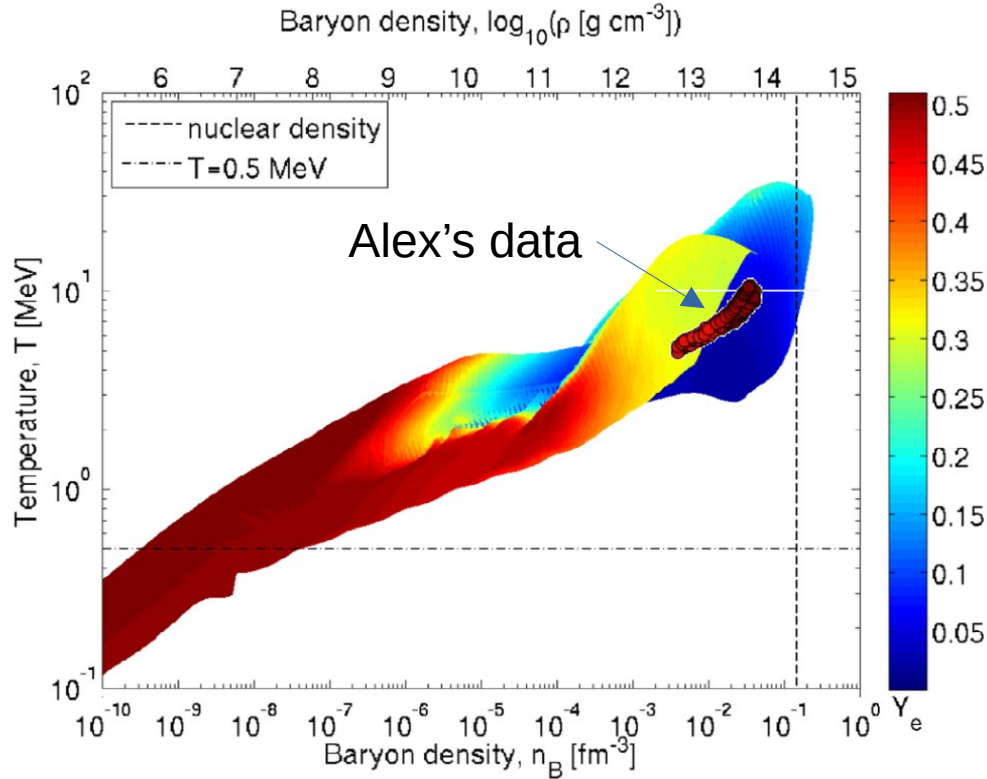


- Unified functional covering all densities and temperatures for better uncertainty control

- Optimal distribution on cluster obtained from Multi-Component Plasma

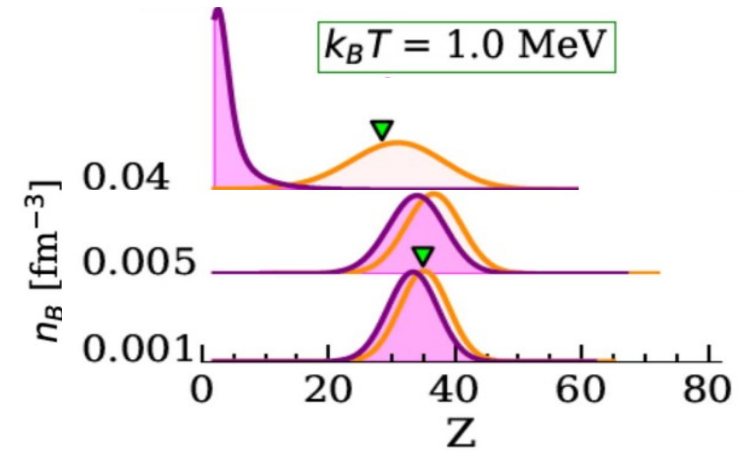


Clustering in compact stars (F.G.)



- Unified functional covering all densities and temperatures for better uncertainty control

- Optimal distribution on cluster obtained from Multi-Component Plasma



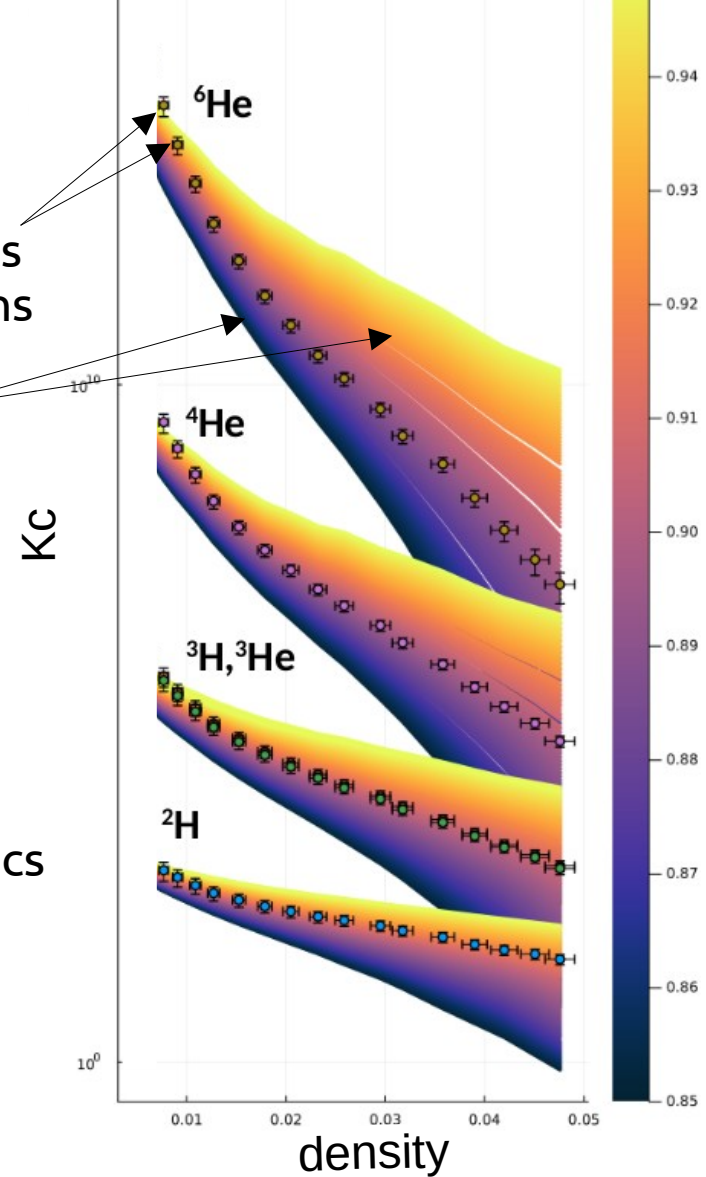
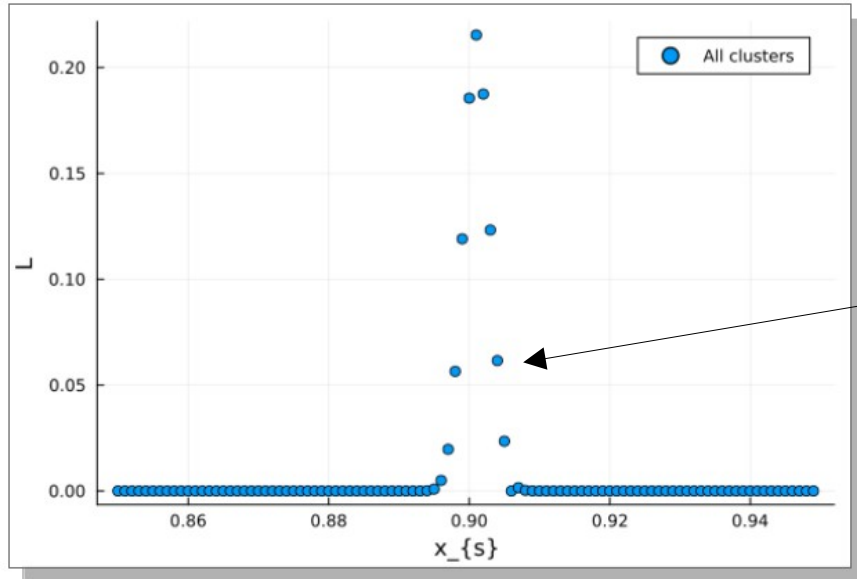
- But clusters are not isolated : their properties are modified by the surrounding medium !

In-medium effective mass influences cluster production (A.R.-S.)

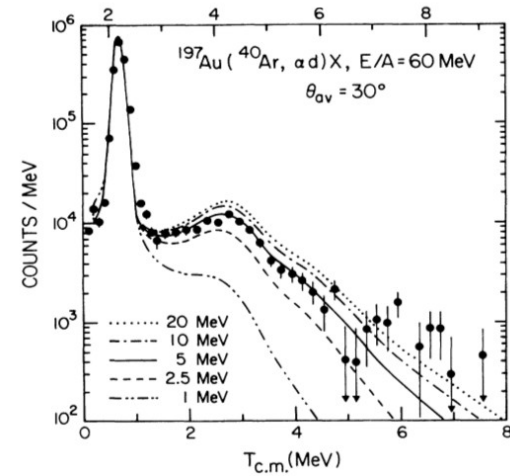
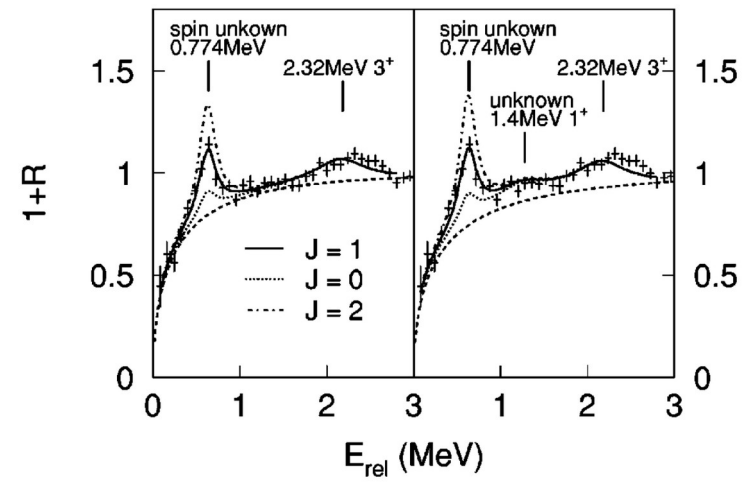
experimental points
from H-I collisions

RMF calculation with
different cluster-medium coupling

input for astrophysics
calculations



Particle-particle correlations : structure and temperature (I.L.)



Particle-particle correlations : structure and temperature (I.L.)

