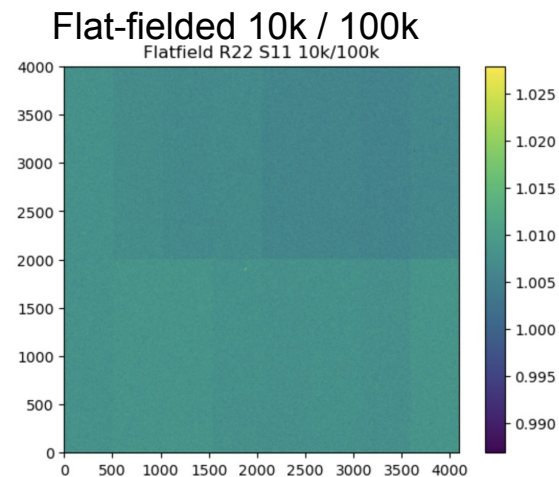
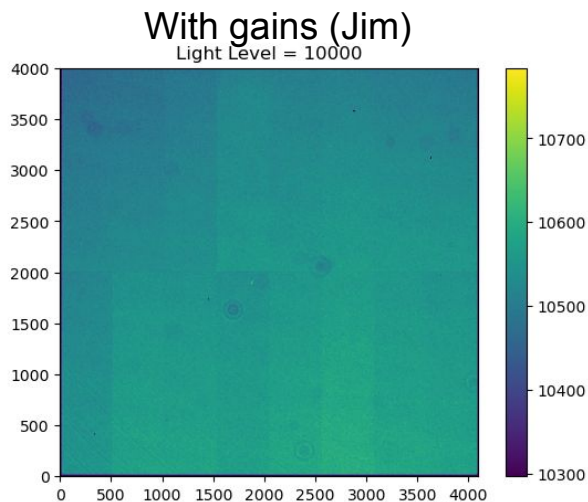
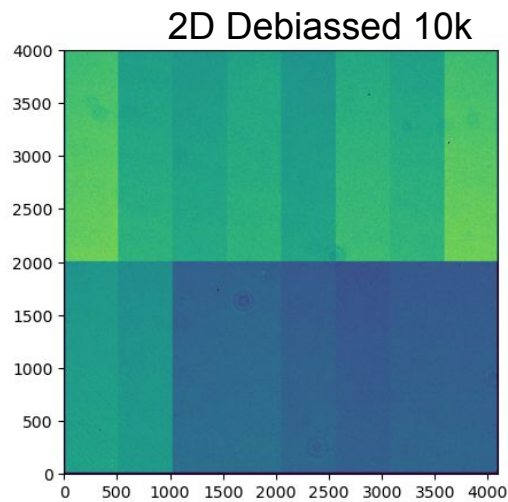


Looking at Flats

Goal

- [META] Learn about accessing/processing focal plane data
- Look for non-linearities in flats by flat-fielding flat exposures (run 13144)
- WIP...



Few issues

- Non-linearity seen
 - In 10k/100k (expected)
 - In 1k/10k
 - At detector edges
 - Not a trivial gain issue
 - Note that levels are corrected by lamp intensity (not checked)
- Next step: non-linear corrections...

