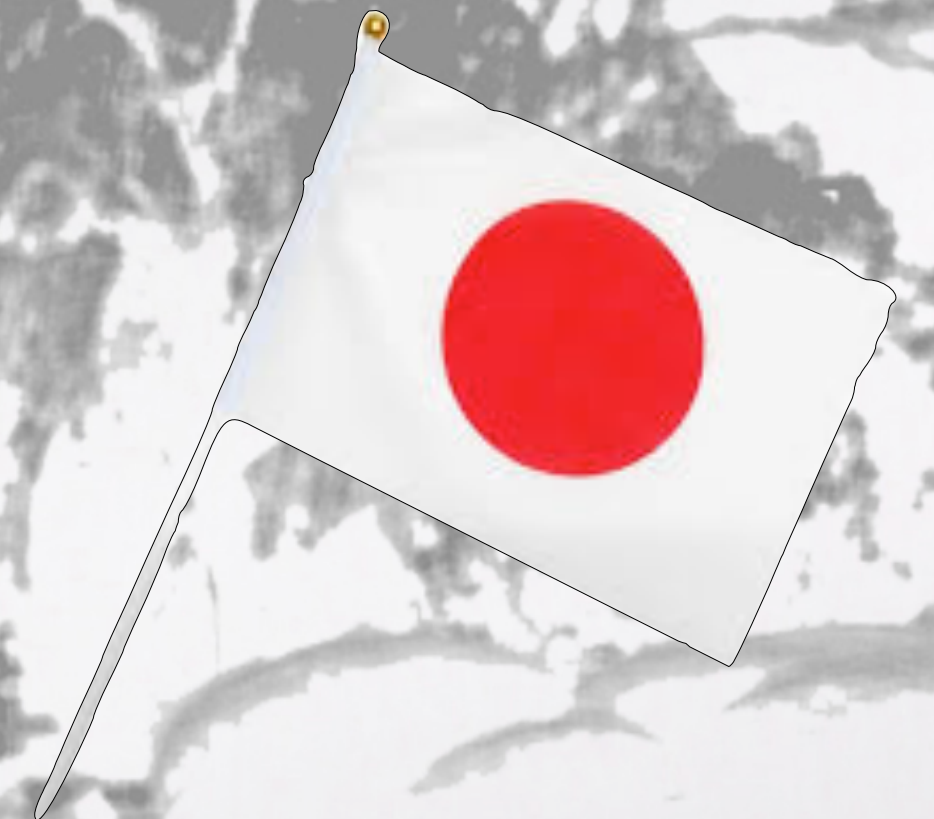
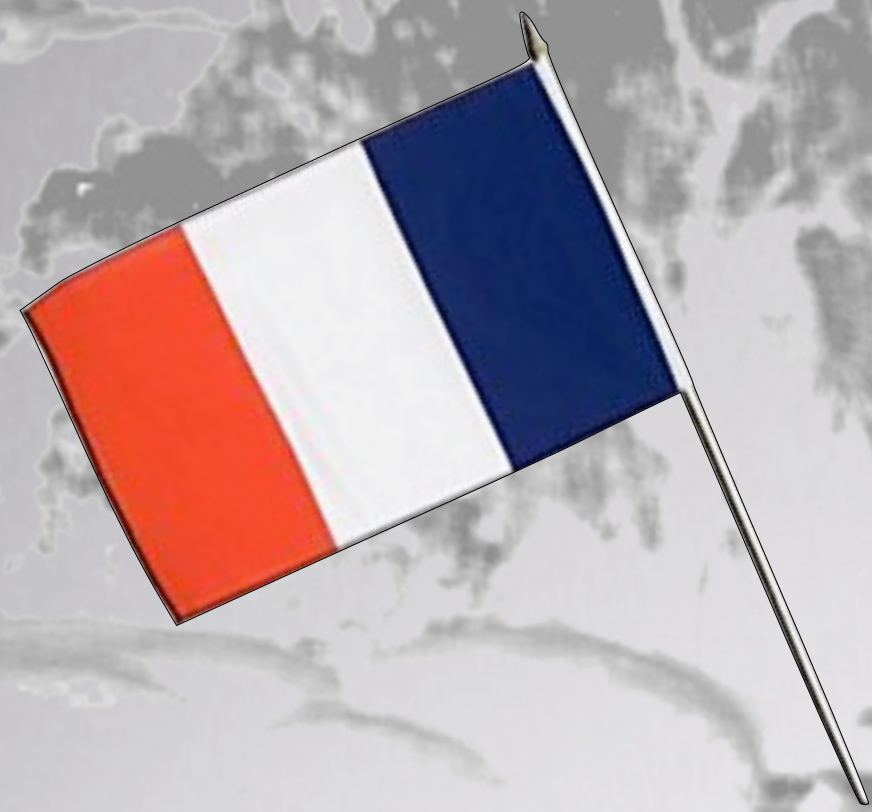


TOSHIKO YUASA LABORATORY



FRANCE-JAPAN PARTICLE PHYSICS

Annual call for proposals

- ❖ **Important drop of TYL proposals in 2022**, after more than 2 years of travel restrictions.
 - ❖ μ cLFV, neutrinos and ALICE hold on.
 - ❖ Few additional projects actually still alive, though not submitted this time.
 - ❖ If no significant progress made, no big change in Proposal/Report asked.
 - ❖ Relevant evaluation not easy to carry out.

- ❖ **Mission of TYL is to foster collaborative research between JP and FR** and to be their showcase.
 - ❖ Should mainly be **Seed Money to emerging activities**.
 Example: Belle II TYL project started in 2013, BEAST IN2P3 project created in 2016, Belle II IN2P3 project created in 2017.
 - ❖ Financial support to research is provided by IN2P3, Irfu, KEK, ...
 - ❖ TYL support usually used for: **travels, equipment shipment, student co-supervision**.
 Difficulty: JFY starts in April, FR budget must be spent before Dec.
 - ❖ TYL projects are expected to last only 4 years.
 We hope for tolerance of the Steering Committee because of special situation: travel restrictions and perspective of the TYL creation at KEK soon.

	2019	2020	2021	2022
HEP	7	7	5	4
FLAV	2	2	2	1
HAD	3	3	3	3
Nu	2	3	3	3
Mu	1	2	2	2
D_RD	6	7	10	5
A_RD	7	10	10	6
COMP	2	2	2	1
Total	30	36	37	25



Highlights of recent TYL activities

- ❖ **TYL Young Investigator Award:** none in 2022.
- ❖ **Toshiko Yuasa Female Scientist Prize:**
Dr. Mihoko Nojiri was awarded the Gold Medal.
Ceremony hosted by Ochanomizu University on 15 Feb 2022.
- ❖ **Student exchange in 2021:**
 - ❖ JP → FR:
Yuichi Okugawa (PhD, HEP-16), Shusaku Tsumura (MSc, HEP-15).
 - ❖ FR → JP:
Grégoire Pihan (PhD, JSPS funding, HAD-03), Nathan Touroux (PhD, co-supervision w/ Osaka, HAD-03).
 - ❖ Remote co-supervision:
Melissa Faur (MSc, FLAV-03), Luc Cérisy (MSc, HAD-02), Hector Pilot (Bachelor, HAD-04), Lucille Mellet (MSc, NU-08).
 - ❖ Several exchanges already announced in **2022:**
Quentin Duong (MSc, MU-03), Shusaku Tsumura (MSc, HEP-15), Tomoki Onoe (MSc, HEP-15).
- ❖ **Rikejo Camp with high school students:**
After a remote event in 2021,
back to in person at KEK in 2022.



On-going calls

→ Information by CNRS office in Tokyo, DERCI, French Embassy.
However, we might miss something, do not hesitate to point us to on-going calls.

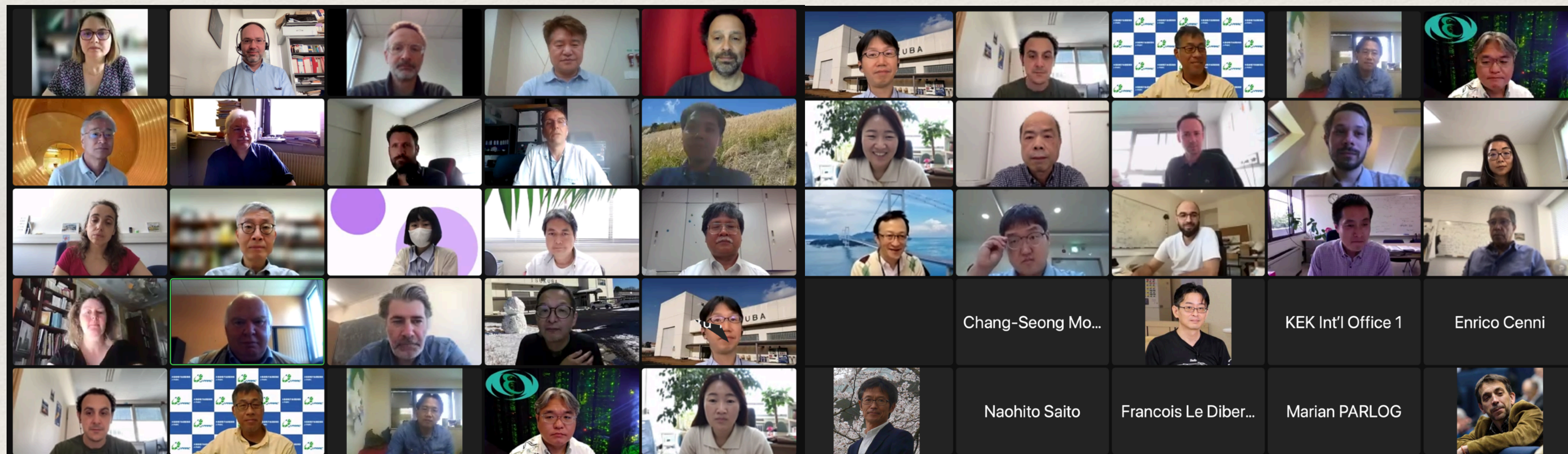
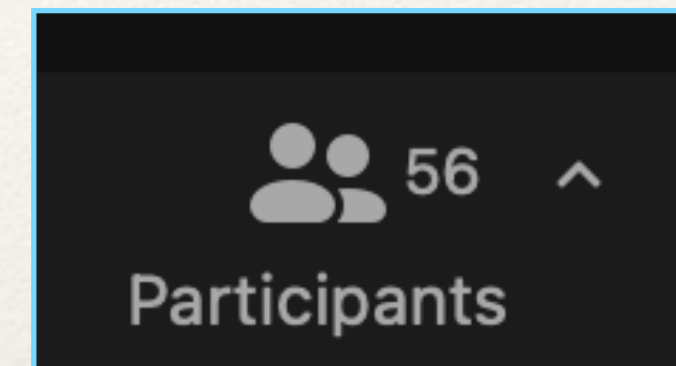
- ❖ **Partenariat Hubert Curien Sakura Program:**
 - ❖ Exchange of researchers between FR and JP.
 - ❖ Travel budgets: 6 000 € and 1 000 000 ¥
 - ❖ Application deadline: [6 September 2022](#).
 - ❖ More information: <https://www.campusfrance.org/fr/sakura>

- ❖ **Scientific photo contest: « Yugen – Beauté cachée de la science »**
 - ❖ Organised by French Embassy in Japan.
 - ❖ Highlight scientific FR-JP collaborations.
 - ❖ Application deadline: [14 August 2022](#).
 - ❖ More information: <https://concourisyugen.org/>

2022 joint TYL & FKPPL annual workshop

❖ 2022 workshop:

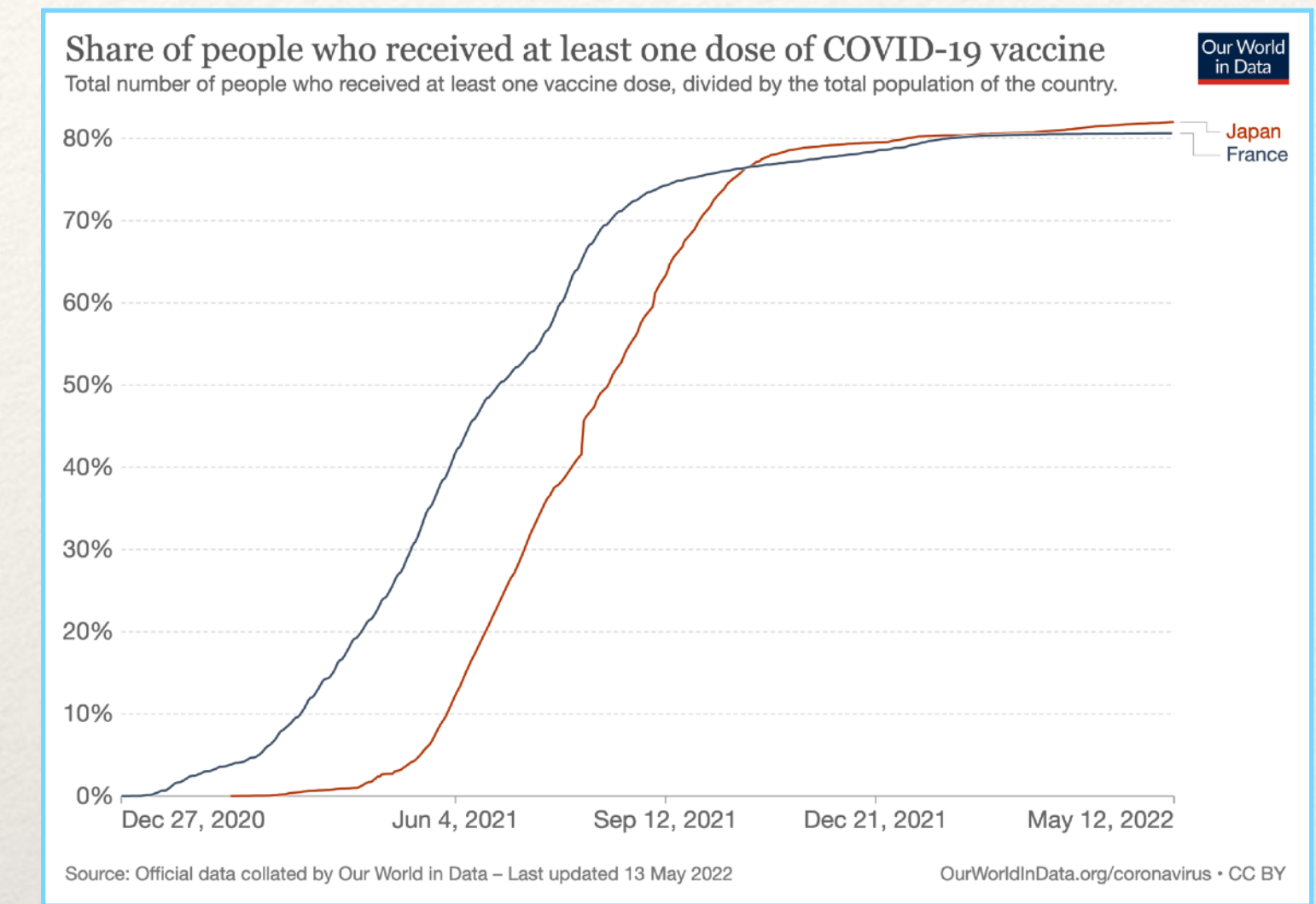
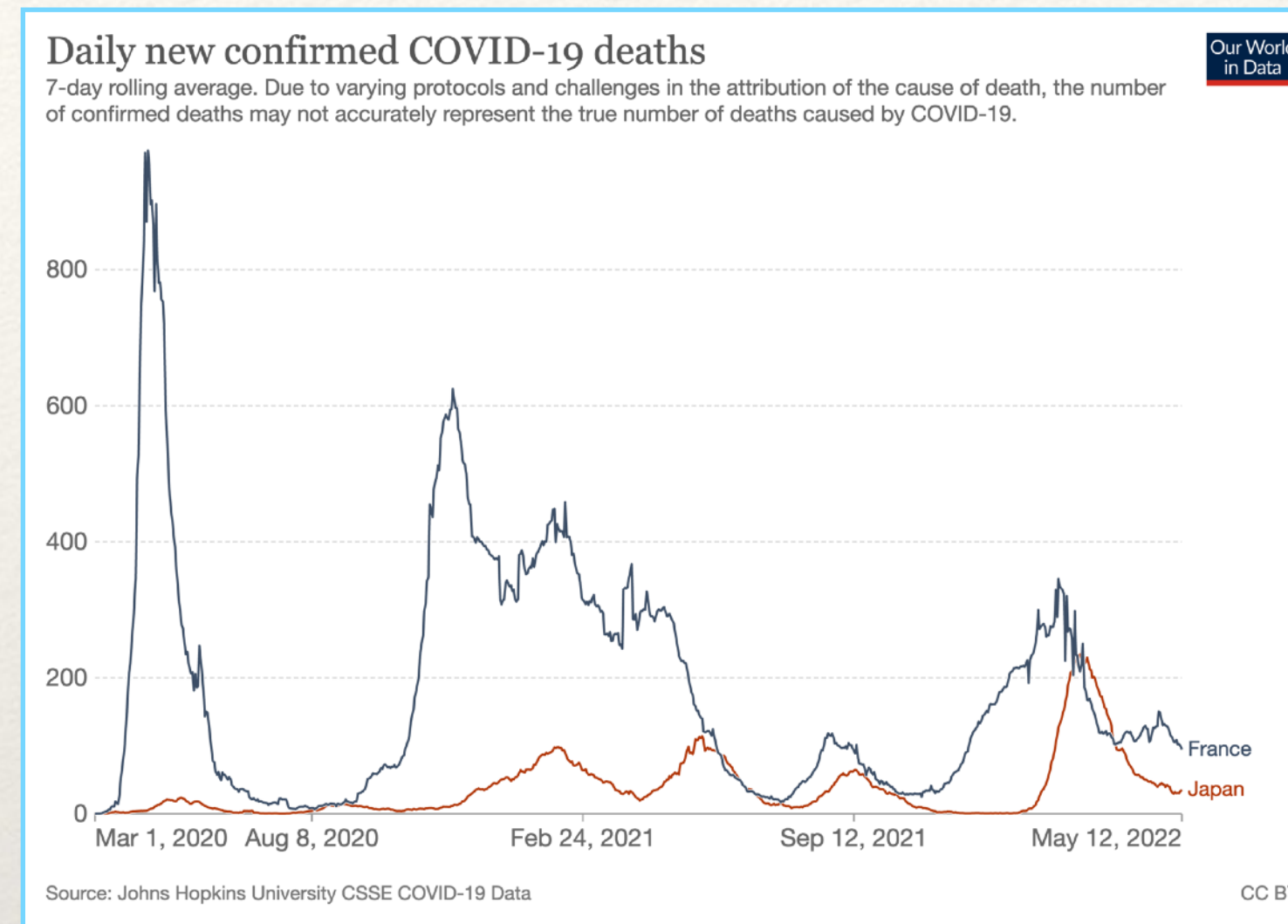
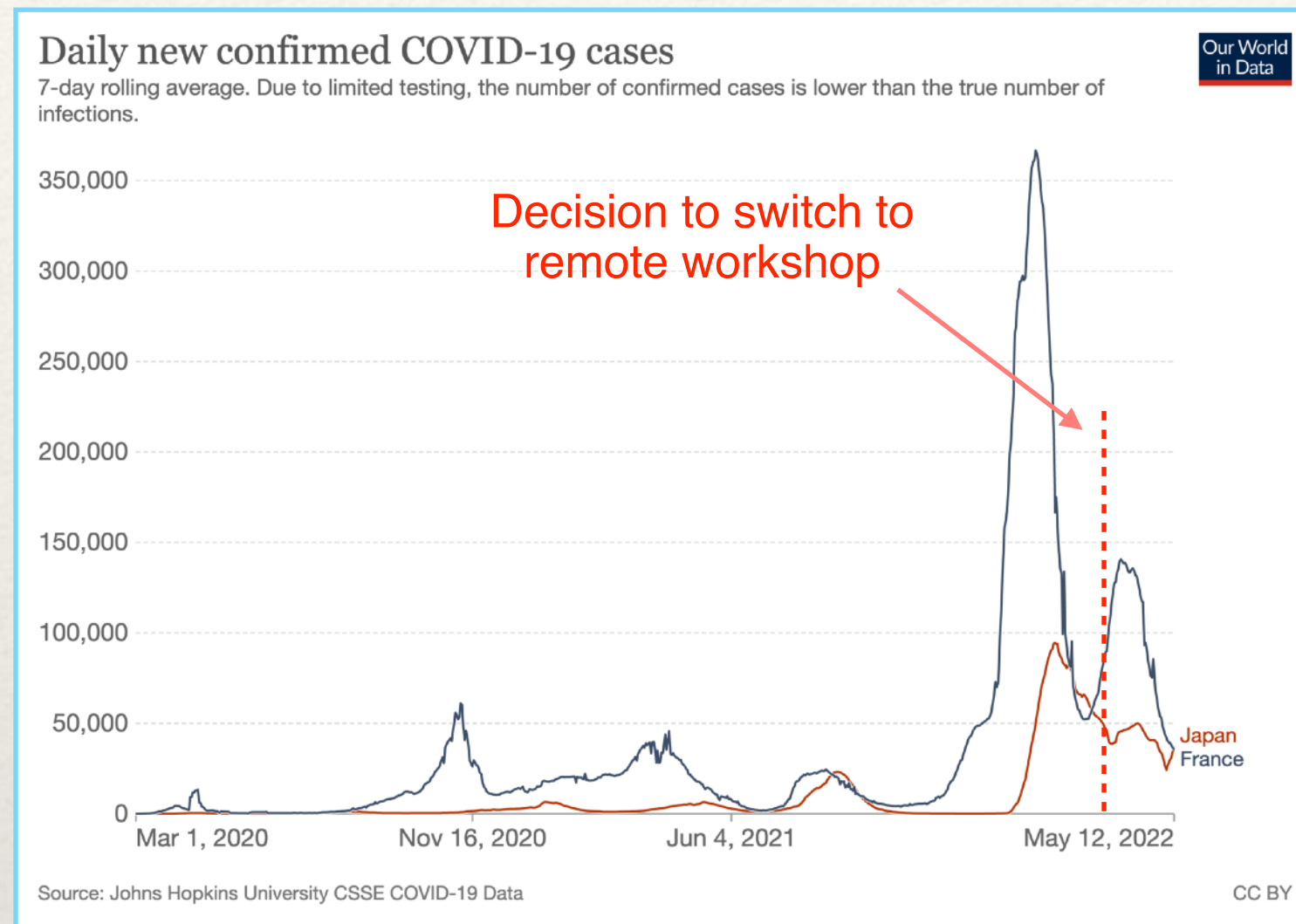
- ❖ <https://indico.in2p3.fr/event/26306>
- ❖ 3rd time that event was fully organised on-site in Nantes and cancelled at last moment to switch to remote format. Huge thanks to local organisers: [Guillaume Batigne](#), [Tanja Pierret](#).
- ❖ Fair participation to the workshop: around 40-55 participants every day. Many thanks for your contributions and for having made a lively workshop.
- ❖ Huge thanks also to TYL speakers, who accepted very kindly to present the summary reports on several projects, and to the project PI's who provided relevant material.



- ❖ **2023 workshop:** most probably in Japan, still to be decided.

Travels between France and Japan

- ❖ Epidemic situation in FR and JP: <https://ourworldindata.org/coronavirus/country/france?country=FRA~JPN>



- ❖ Travels to FR:

- ❖ Easy since 12 Feb 2022 if 3 vaccination shots w/ Pfizer or equivalent. No test, no isolation requested. However, less flights, more expensive, longer flights, and last-minute modifications. True for JP→FR and FR→JP.

- ❖ Travels to JP:

- ❖ Theory: possible again since 15 March 2022. Only Business or Study (no tourism).
- ❖ Practice: painful. Daily entrance quota of 10 000. Visa requested, based on a certificate issued by your host (UketsukeZumisho). Changes announced very regularly. May be in June: quota of 20 000, no tests anymore at arrival, experimental try to allow tourists enter ?
- ❖ cf. https://www.fr.emb-japan.go.jp/itpr_fr/reprisepartiellevisas.html#shuccho

Extension of TYL beyond mid of 2022

- ❖ **Current TYL agreement:**
 - ❖ Creation of TYL (FJPPL) in 2006. Renewal every 4 years.
Current MoU valid until 21 May 2022. General consensus of Steering Committee to extend it over full JFY-2022.
Web site: <http://fjppl.in2p3.fr>
- ❖ **Creation of a real CNRS-KEK laboratory, hosted at KEK in Japan.**
 - ❖ Main purpose: **long term stays** in Japan of FR researchers and engineers.
 - ❖ Discussions on-going. Delay due to travel restrictions. Expected progress soon.
 - ❖ Current TYL activities will be maintained: promoting careers of young researchers, Female scientists, masterclasses, support to student exchange, support to develop new FR-JP collaborative work (seed money).



Farewell, Ritsuko!

- ❖ **Ritsuko Ota**, from International Affairs Division at KEK, has been helping as secretary of TYL since 2014. Invaluable help!
- ❖ In 2014-2018 she worked with Junji Haba and Philip Bambade.
- ❖ Since April 2022 she is at Institute for Cosmic Ray Research (ICRR, University of Tokyo).



GRACIAS
ARIGATO
SHUKURIA
JUSPAXAR
DANKSCHEEN
YAQHANYELAY
TASHAKKUR ATU
SUKSAMA
EKHMET
SHUKRIYA
SHUKURIA
GOZAIMASHITA
EFCHARISTO
KOMAPSUMNIDA
MAAKE
GRAZIE
MEHRBANI
PALDIES
BOLZIN
MERCICI
TINGKI
BIYAN
SHUKRIA
THANK
YOU