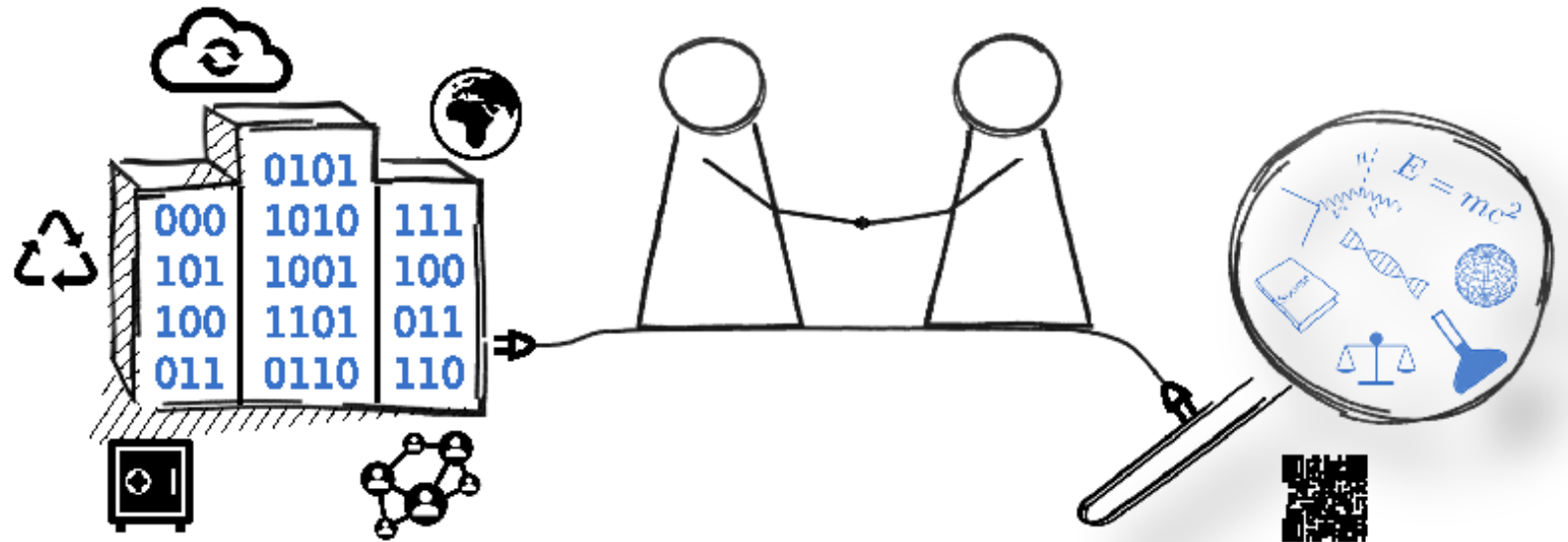


Research data  
support at  
Aix-Marseille

CEDRE



➤ Connecting with IPhU ◀

# — Digital transition/upgrade at AMU

## Storage

+40% in next 5 years



- Large increase in demand
- Entering the Tens of Po scale

## CPU processing

+80% in next 5 years



- Large increase in demand
- Expecting tens of thousand of CPU

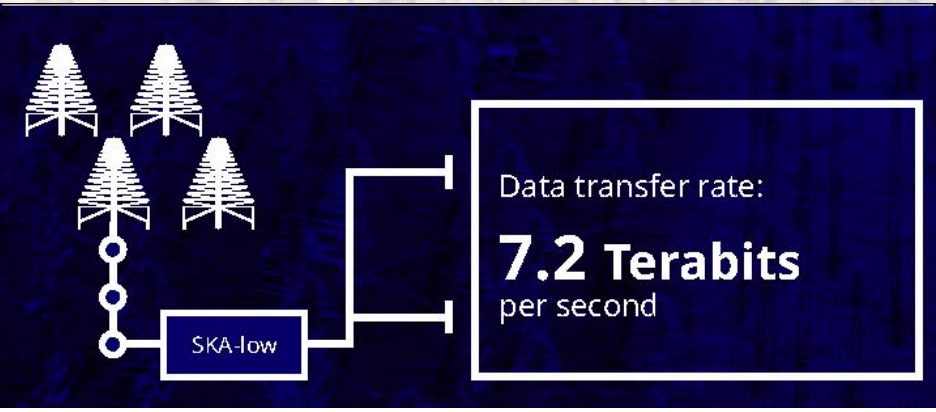
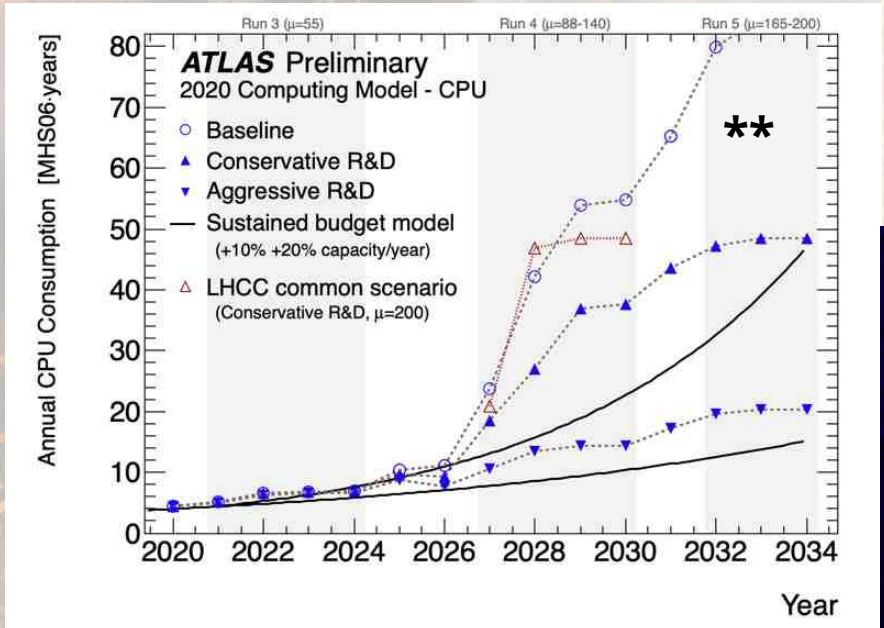
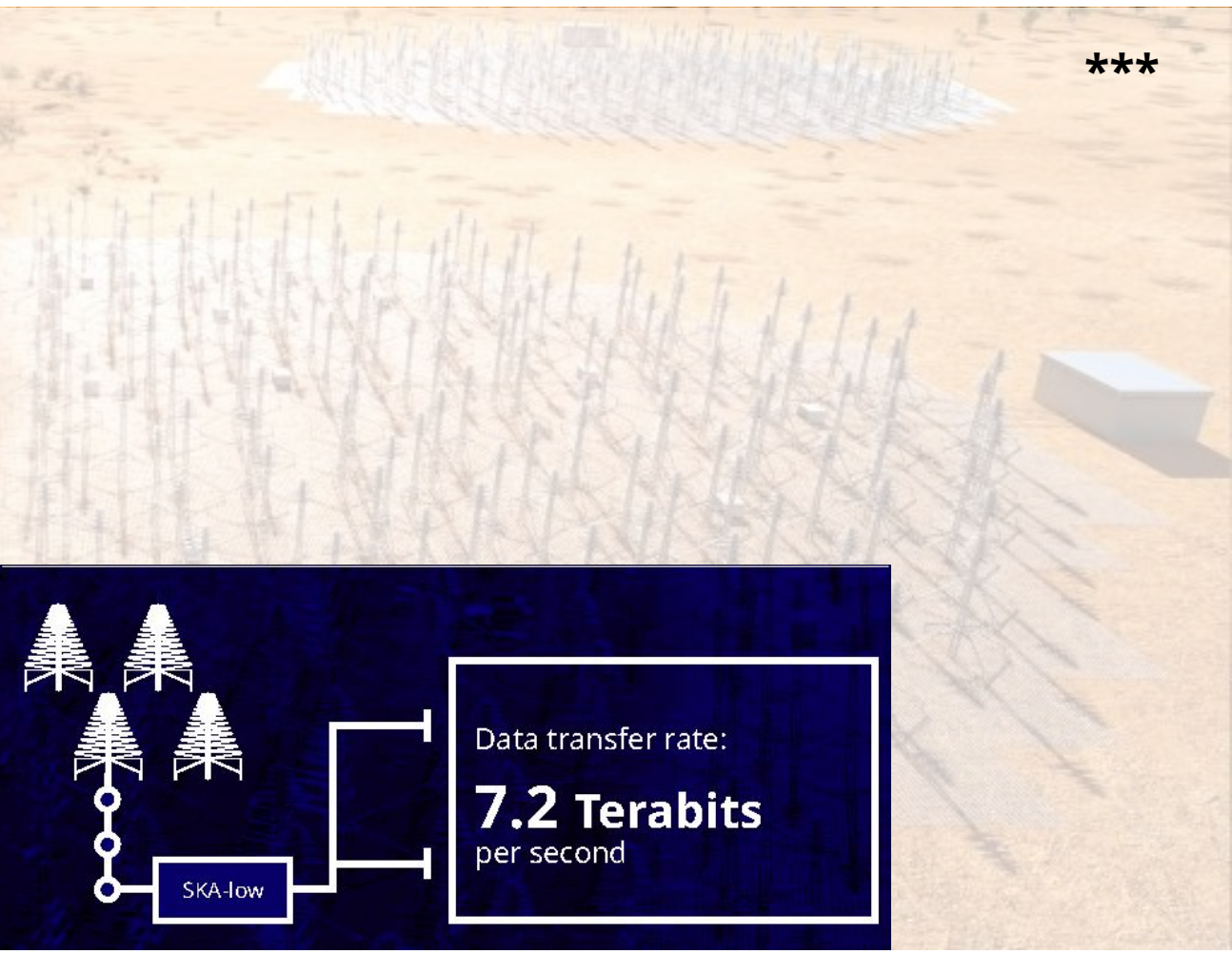
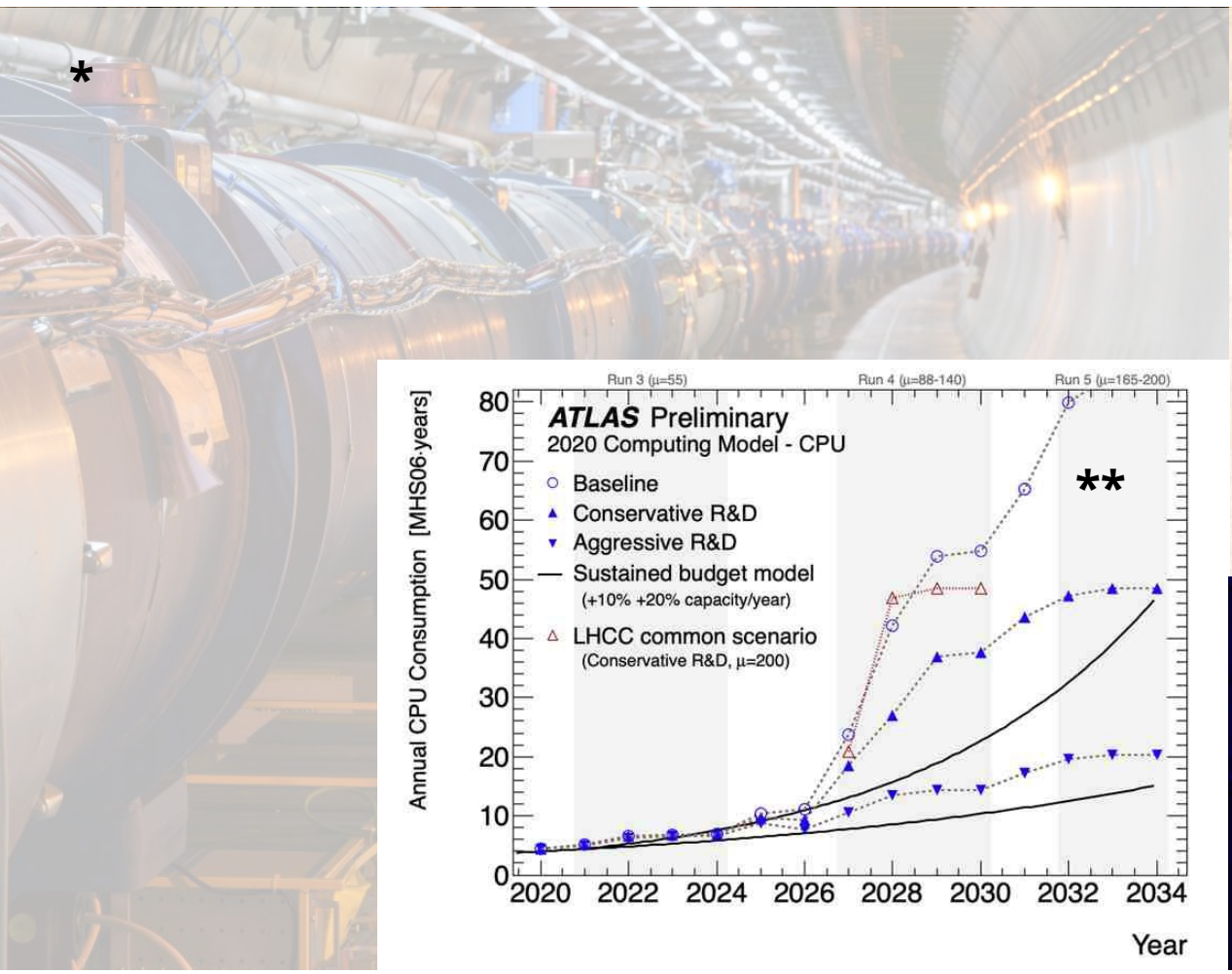
## GPU processing

+250% in next 5 years



- New demand, strong kick-off
- Few hundreds of GPU to deploy

# — Digital transition/upgrade



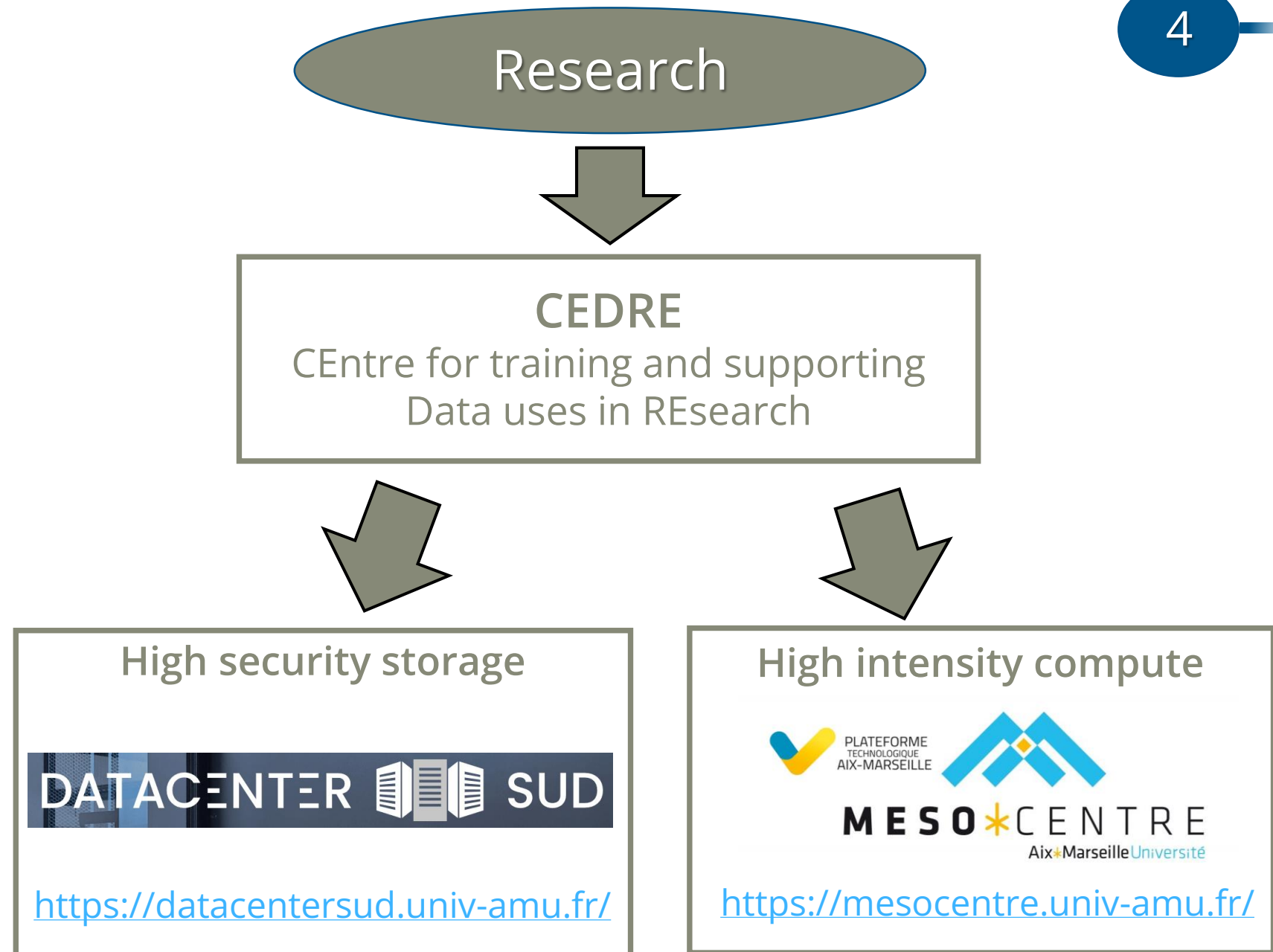
\*<https://home.cern/fr/science/accelerators/large-hadron-collider>  
\*\*<https://twiki.cern.ch/twiki/bin/view/AtlasPublic/ComputingandSoftwarePublicResults>  
\*\*\*<https://www.skatelescope.org/>

A topic the HEP community is only too aware of.

# Support in AMU

*« In the shelter  
of each other  
people live. »*

Irish saying



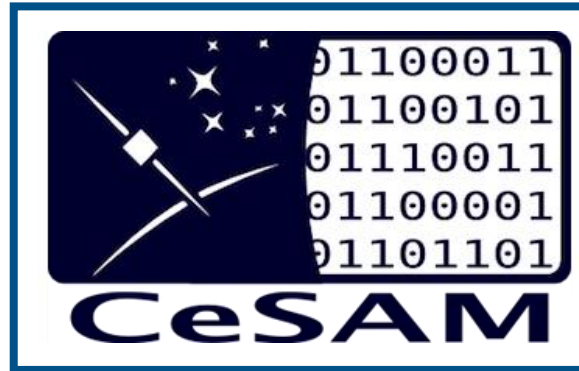


# — There are more supports (Here a selection)



**PUD - AMU**

Plateforme Universitaire de Données  
d'Aix-Marseille Université



Les « **ateliers de la donnée** » réponse projet  
ANR par AMU et partenaires en cours



Ressources numériques et  
communication scientifique



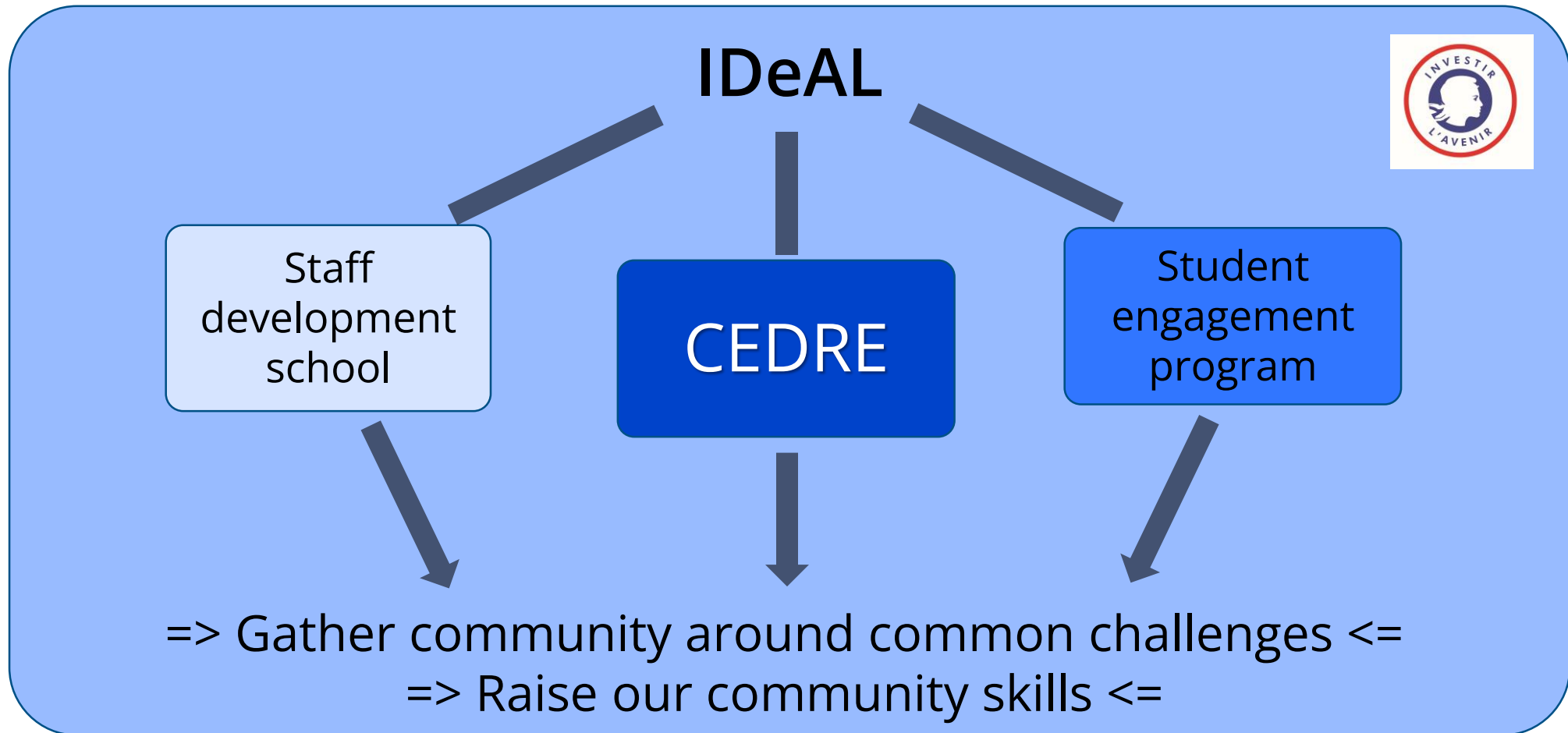
recherche.**data.gouv.fr**



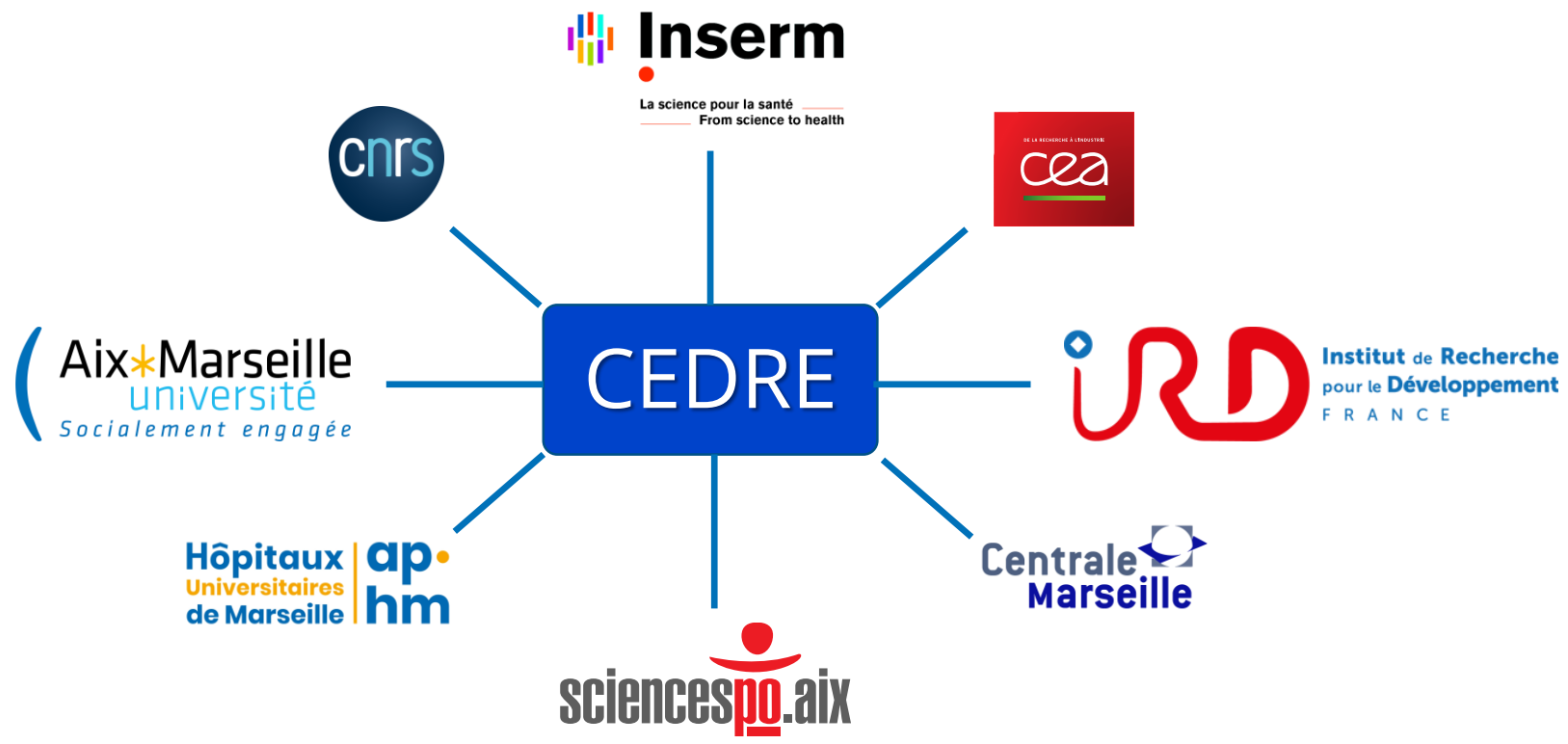
**CEDRE to facilitate access to all  
available resources ?**

CEDRE : CEnter for training and  
supporting Data uses for REsearch

# — CEDRE in a global strategy



# — CEDRE for AMU and its partners



⇒ Link AMU with national developments for data management



# Comities watching CEDRE

## AMIDEX and IDeAL managements

- Ensure coherence with Aix-Marseille site strategy
- Link with other IDeAL programs to promote formations

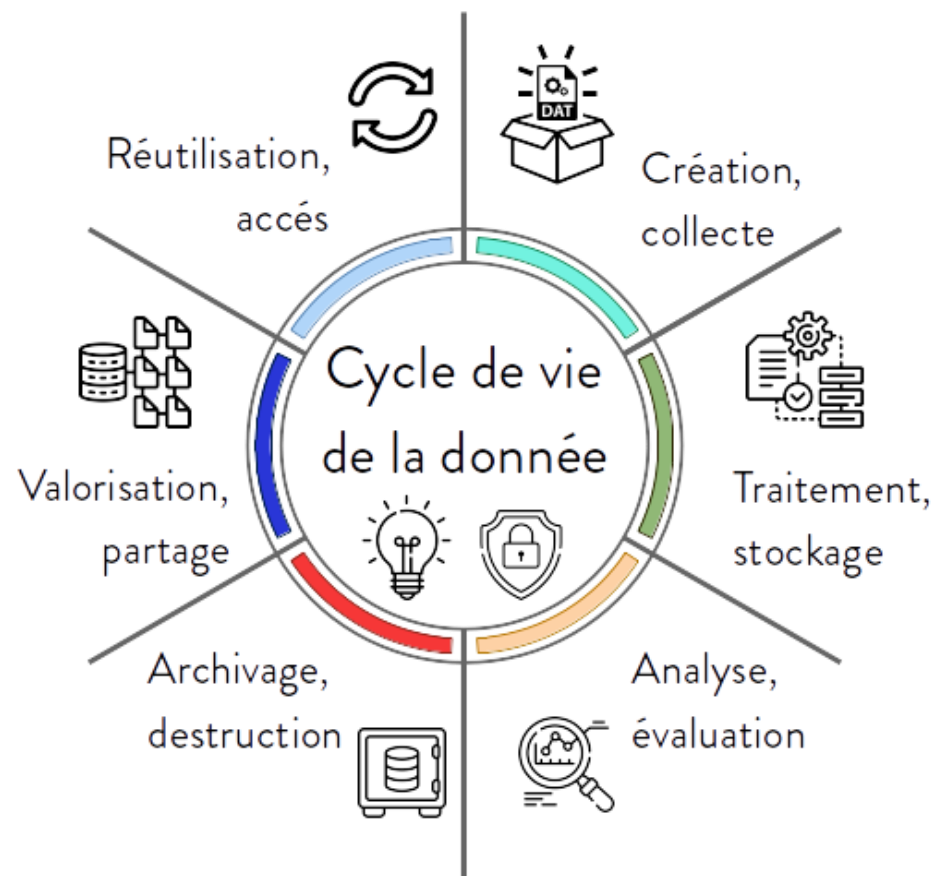
## Executive committee (partners, AMU thematic VP, and selected data experts)

- Validate all CEDRE actions
- Connect CEDRE with national developments on research data management

## User committee

- To be created
- Feedback CEDRE on its actions and provide suggestions

# Objectives : bring FAIR-ness\* in our data management cycles



Creation of an expert network  
Creation of a helpdesk



Support to interdisciplinary and pluridisciplinary projects



Creation of formation cycles for PhDs and staffs

\* For more information (french) <https://amubox.univ-amu.fr/s/6XfP9rza6JqKHE3>

# CEDRE deployment

11

VP IA and digital for research

**Mustpha Ouladsine**  
Responsible for  
CEDRE in AMU



DOSI

**Thomas Calvet**  
Project leader



AMIDEX

**Randy Meersschaert**  
Operationnal  
manager



**William Domingues**  
Technical division  
responsible



**Data team**

=> 4 engineers

=> Data management,  
treatment and analysis

**Pedagogic team**

=> 2 engineers

=> Course cycles and data  
centric events

**Technical team**

=> 4 engineers

=> Informatic infrastructure  
design and administration

**Now recruiting the teams and  
defining allocation strategy**  
(unfortunately we can't help everyone  
at the same time) !

# — CEDRE timeline

## Setup CEDRE

- Setup governance/management and multi-service attachment
- Meet with central service (Datacenter, mesocentre, SCD, DRV, ...)
- Journée de lancement de CEDRE (<https://cedre.univ-amu.fr/>)



## Activate CEDRE support

- Fill all divisions and create a data toolbox
- Define how to request support and request treatment strategy :
  - Defining rules for CEDRE to act and a priority scheme
  - Engage CEDRE in flagship projects
- PMD/PGD support in preparation (WGs created with all partners)

## Formation and animation

- Create a first formation cycle on data for staff and PhD
- Animate thematic days on research data
- Create User committee

Central services on site  
datacenter and mesocentre

## As of now :



4 Po de stockage



260 serveurs déployés



280 m<sup>2</sup> de surface IT



70 entités hébergées

## Four solutions

### Server hosting

« plug and get your network access »

### Linux (windows for AMU) VM

- Up to 4 vCPU, 16 Go RAM, 1 To disk per VM
- High security ensured and PRA in place

**For AMU entity  
Web hosting**

### Storage

File storage (SMB/NFS)  
Object (S3) to come

## Important investment in datacenter :

- > in 2022 infrastructure will allow to go to 60 racks (now 10 and add 10 this year)
- > in 2023 continue adding racks



**Free service for AMU accessible via project request.**

**Three computing architecture hosted at datacentre : HPC, grid, cloud.**

## HPC

- 579 Tflops/s,  
1.3 Po storage  
and 42 To  
memory
- Various nodes  
technologies  
(including GPU)

## Grid

- Using LHC-Tier 2  
node at CPPM
- 3000 cores, 4 Go  
memory / core,  
200 To storage
- Accessible via  
DIRAC

## Cloud

- OpenStack cloud
- 1500 cores,  
400 To storage
- VMs with 16  
cores and 32 Go  
memory

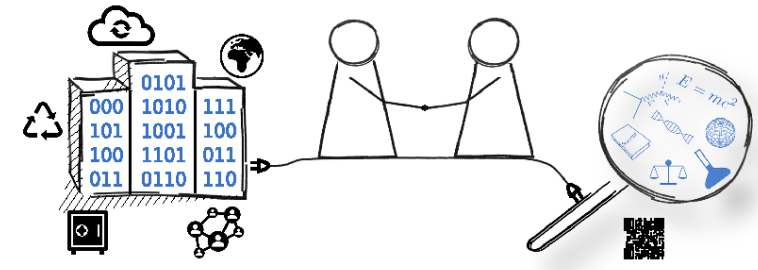
# — Conclusion

New structure on Aix-Marseille site, CEDRE, with three main objectives

1. Empowering community : data expert network and CEDRE helpdesk
2. Technical supporting : involvement in inter(pluri)-disciplinary projects
3. Promoting local skills : complete training offer

CEDRE is getting in operation

- 13 people to help research facing digital turn of event
- CEDRE support rules being defined
- Helpdesk and toolbox being built



As part of above : “Guichet de la Données du site d’Aix-Marseille”

- Answer to ANR project “atelier de la données” being written
- Governmental label for initiatives such as CEDRE
- Articulated around CEDRE and SCD (open-science service)