



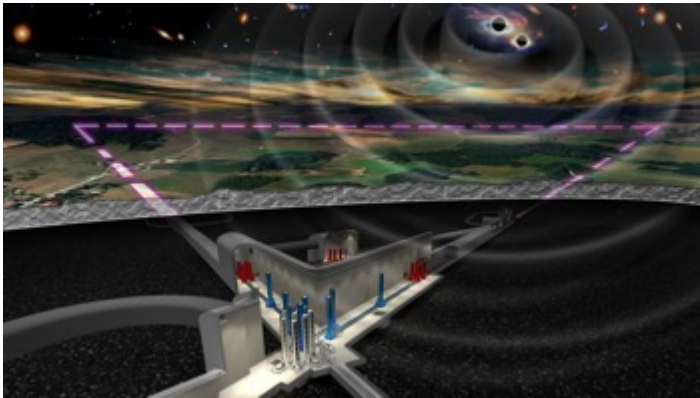
Institut national de physique nucléaire  
et de physique des particules



# Einstein Telescope

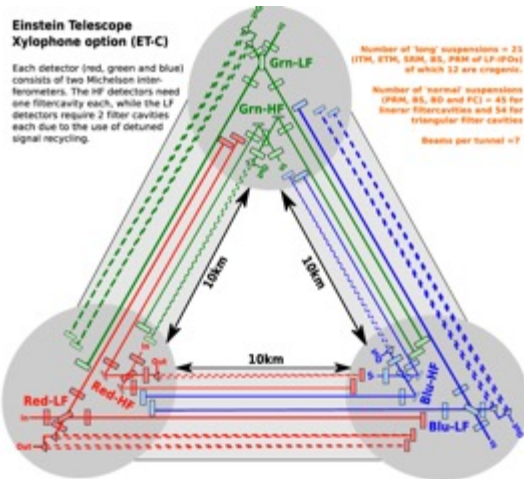
IP2I GW Team Meeting

*Patrice Verdier – [patrice.verdier@in2p3.fr](mailto:patrice.verdier@in2p3.fr) – Dec. 6<sup>th</sup>, 2021*



### Einstein Telescope Xylophone option (ET-C)

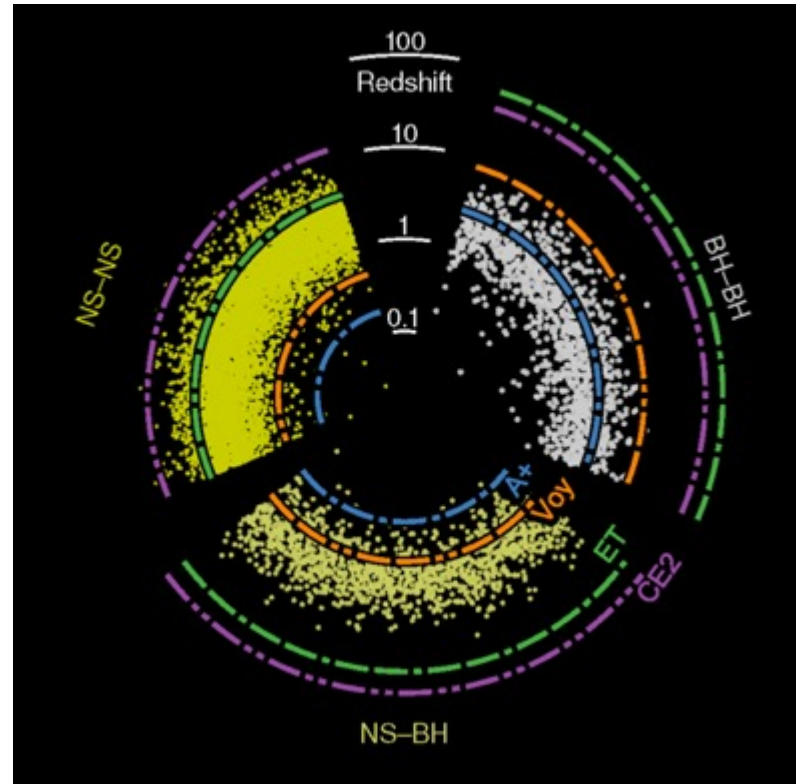
Each detector (red, green and blue) consists of two Michelson interferometers. The HF detectors need one fiber cavity each, while the LF detectors require 2 fiber cavities each due to the use of detuned signal recycling.



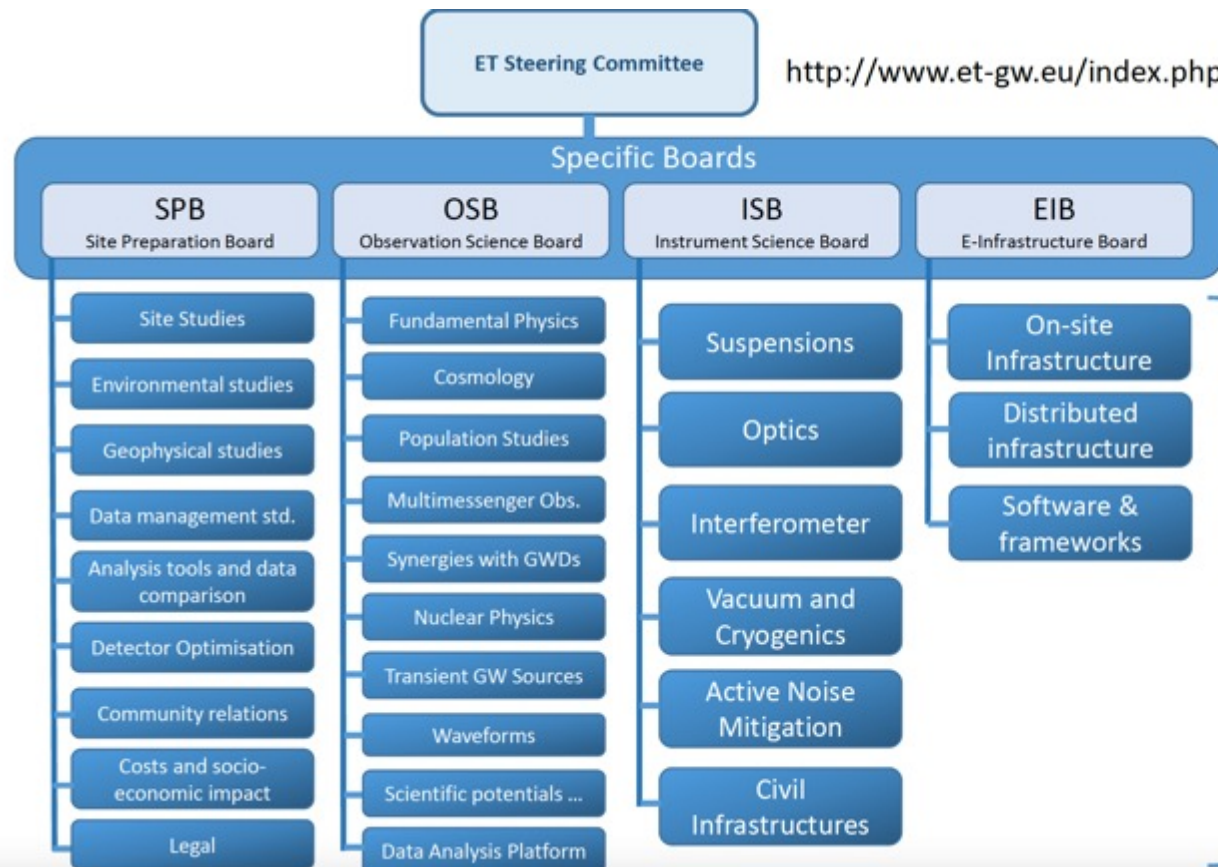
Number of 'long' suspensions = 23  
(TF, ETH, SM, SL, PM of LF-HF) of which 12 are orange.

Number of 'short' suspensions (PM, BS, BS and FC) = 45 for linear fiber cavities and 54 for triangular fiber cavities

Beams per tunnel = 7



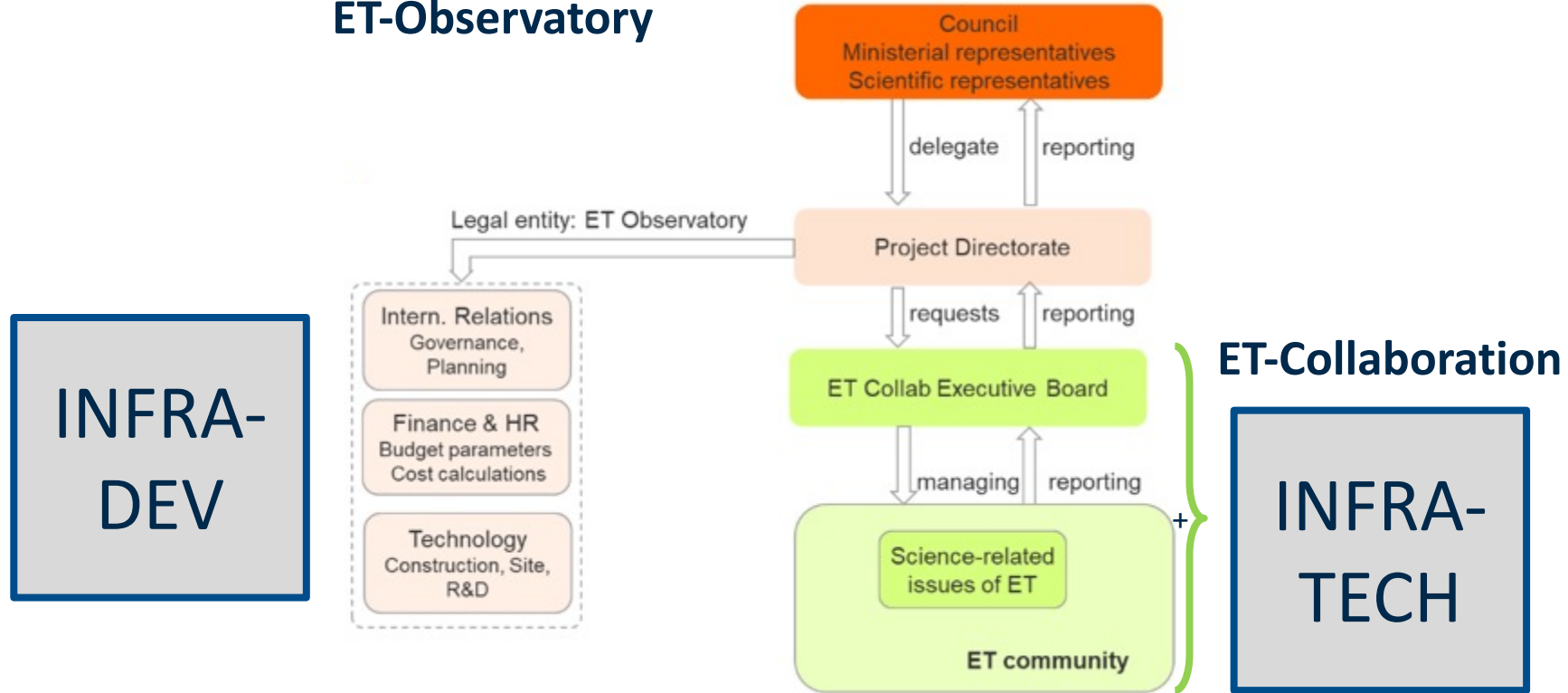
<http://www.et-gw.eu/index.php/et-steering-committee>



The proto-collaboration is currently the most organised component of the ET project

Divisions

# ET-Observatory



- WP1 Coordination and Management
- WP2 Organization, Governance and Legal Aspects
- WP3 Financial Architecture
- WP4 Site Selection
- WP5 Project Office
- WP6 Technical Design
- WP7 Transfer of Technology
- WP8 Computing and Data Access
- WP9 Sustainable Development Strategy
- WP10 Education, Outreach and Citizen Engagement