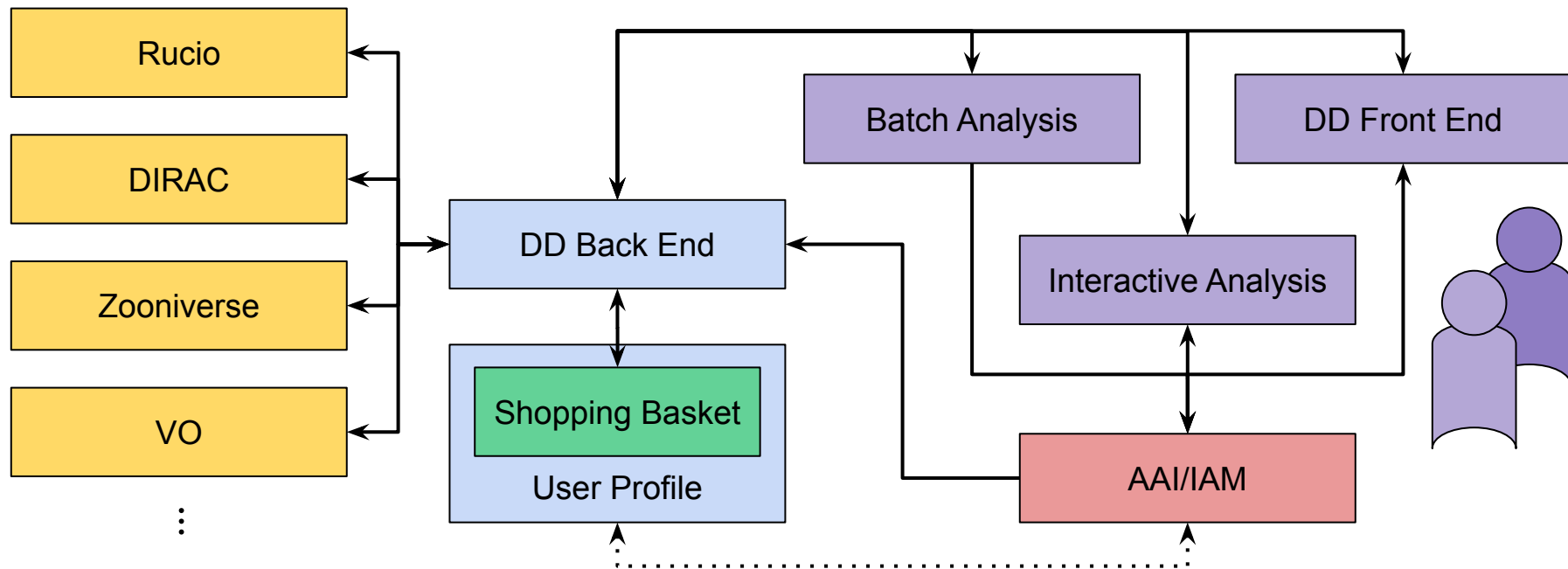


# Online shopping and delivery with ESAP Data Discovery

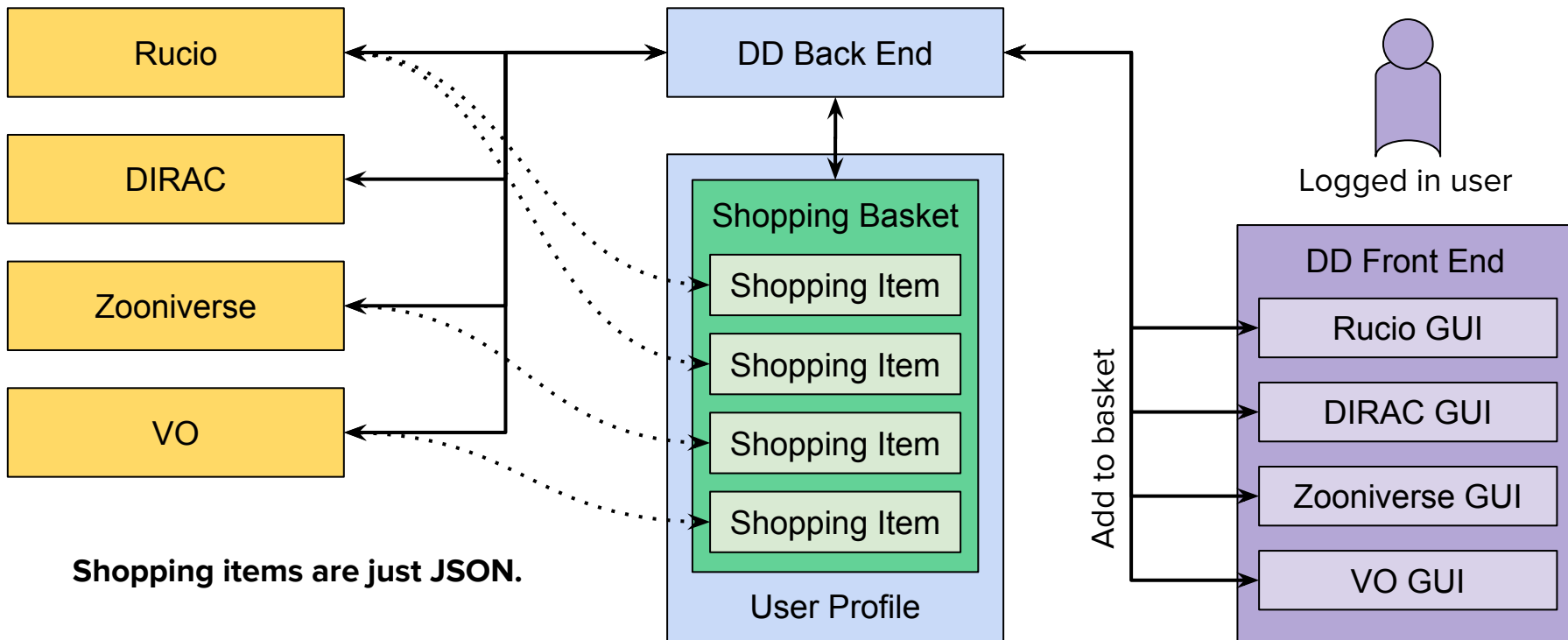
---

WP2/WP5 Integration Workshop - 7th April 2021  
Hugh Dickinson

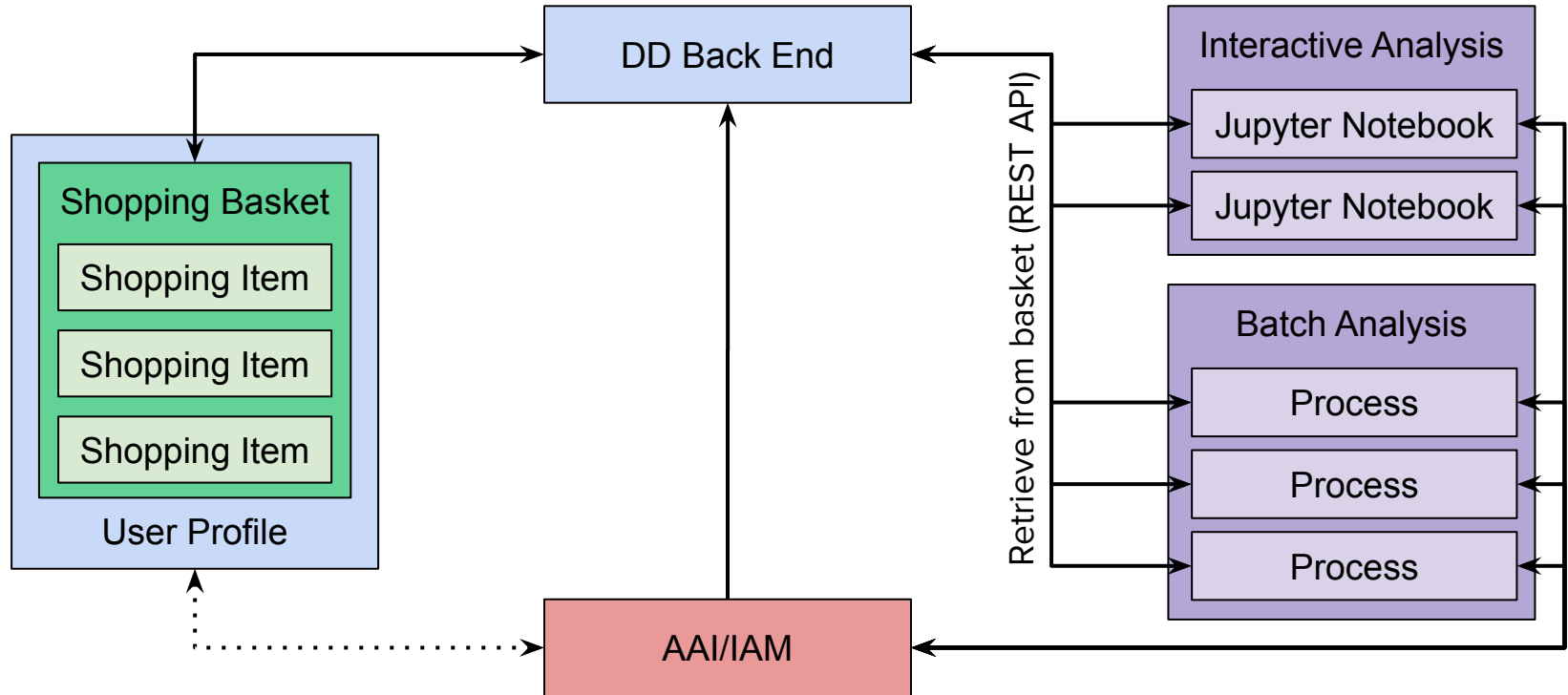
# The ESAP Data Discovery Shopping Basket Model



# What's in the basket? Whatever you want!



# How can I access my basket?



# Using the shopping basket model

## **Data Discovery Front-end**

1. Implement data-source-specific add-to-basket in DD front end to construct JSON-format shopping item.
2. Use DD front end to discover data and add it to basket.

## **Analysis client**

1. Login to IAM and obtain access token.
2. Issue authenticated REST API query to DD backend to retrieve shopping basket.
3. Deserialize JSON response and use to retrieve data from source.