

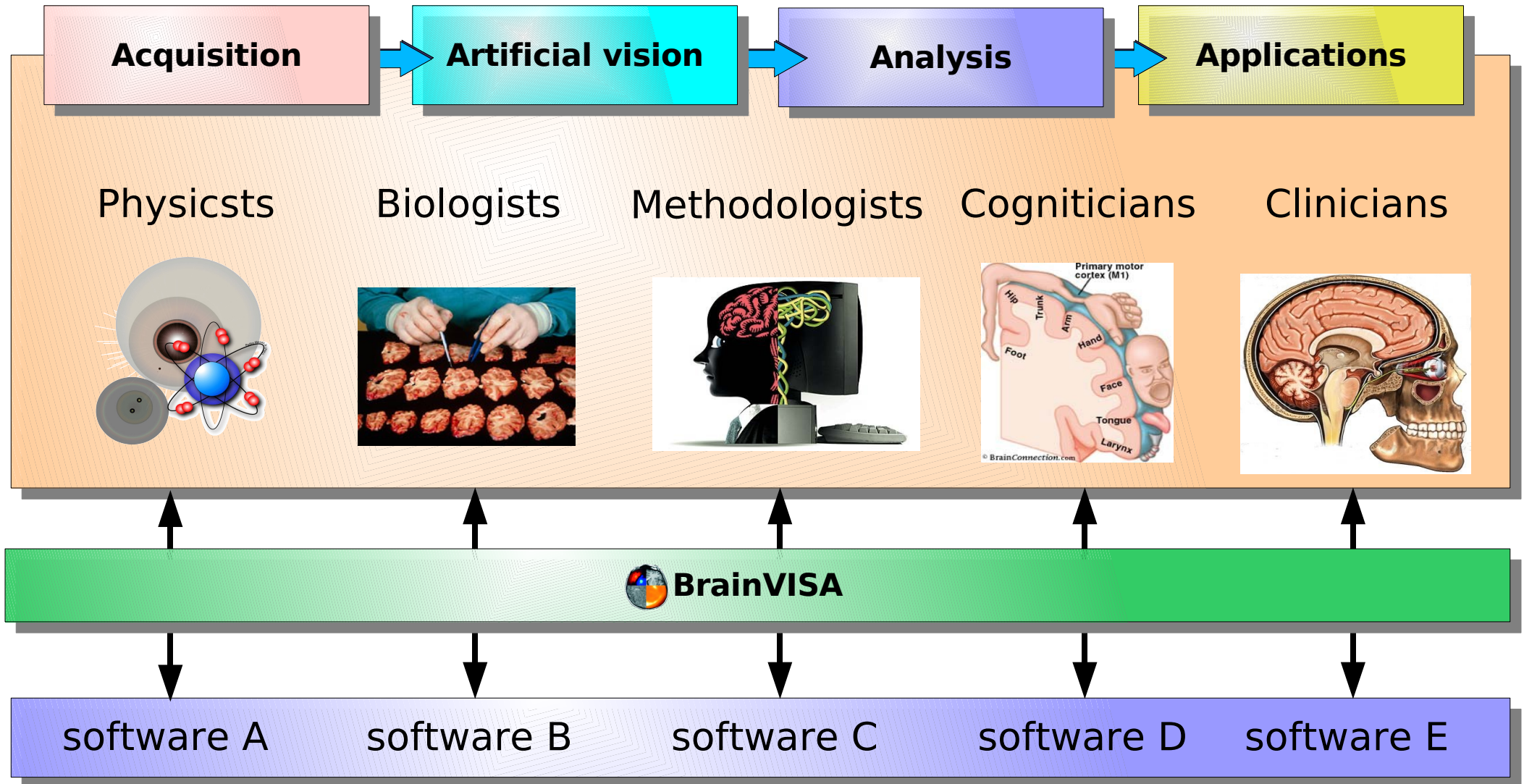


BrainVISA : an operating system for Neuroimaging

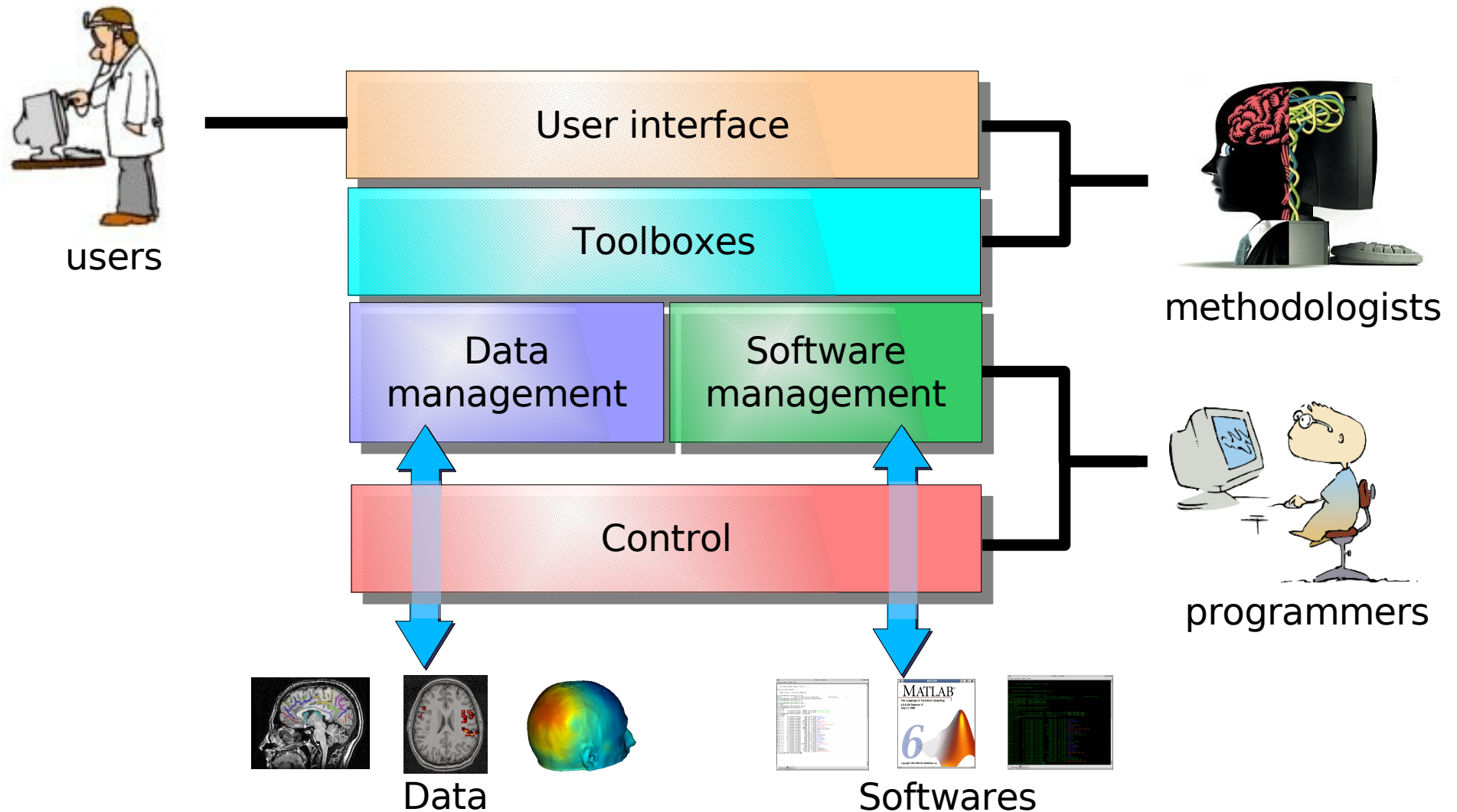


Why BrainVISA ?

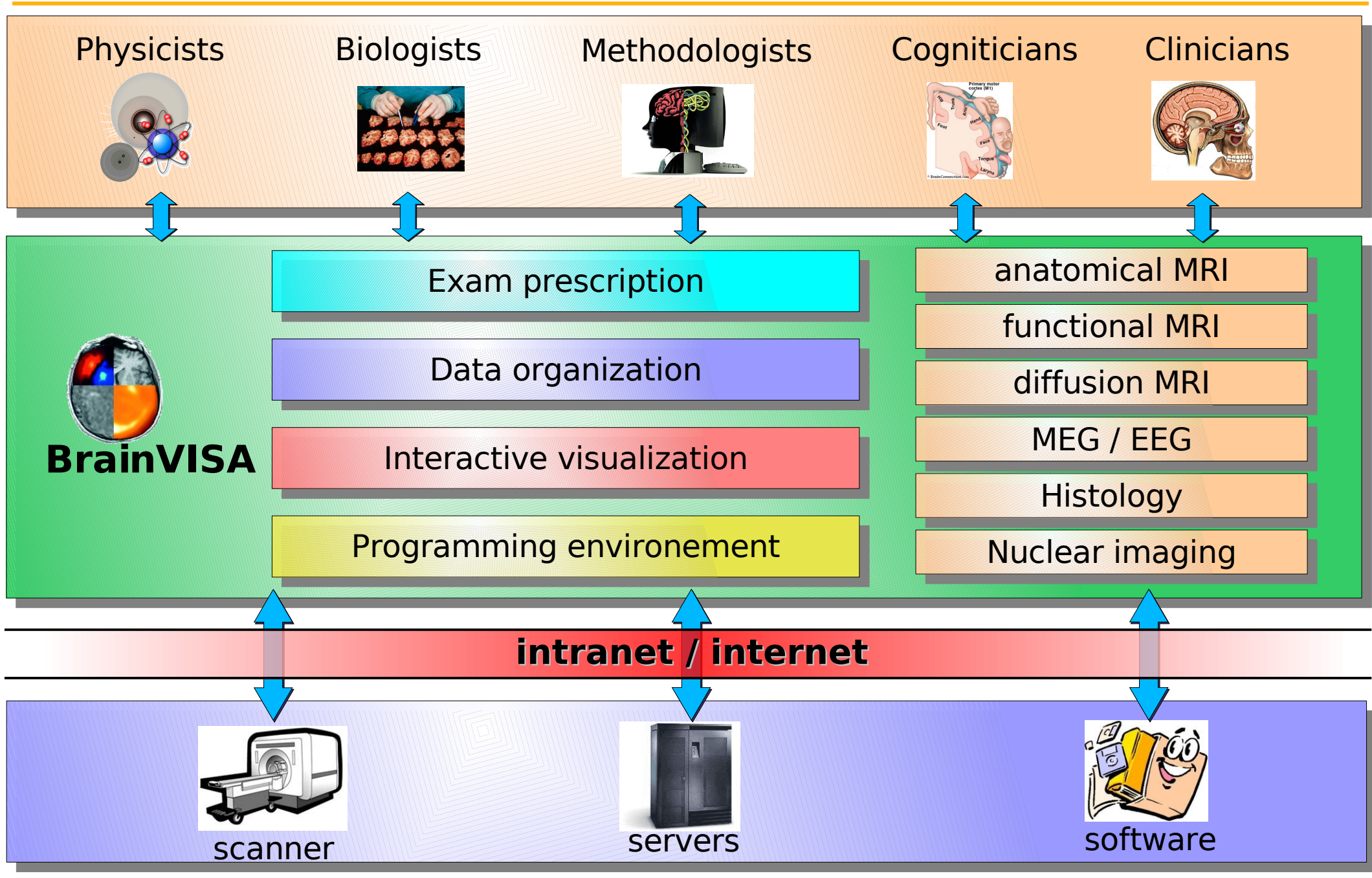
Image processing pipeline



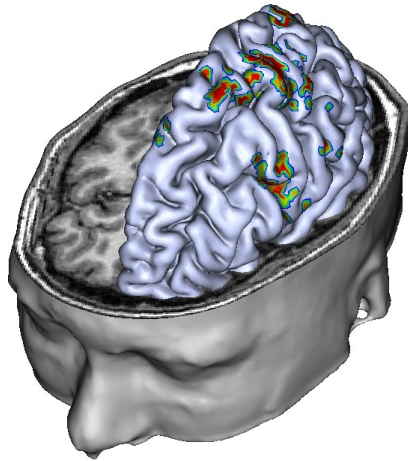
Overview of BrainVISA architecture



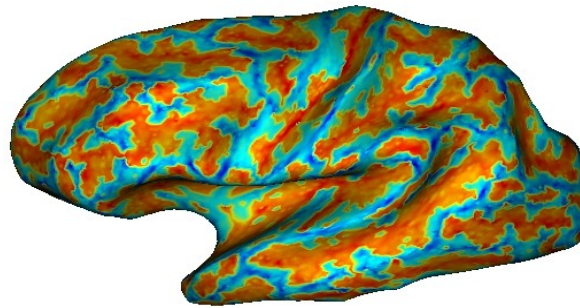
Our objective with BrainVISA



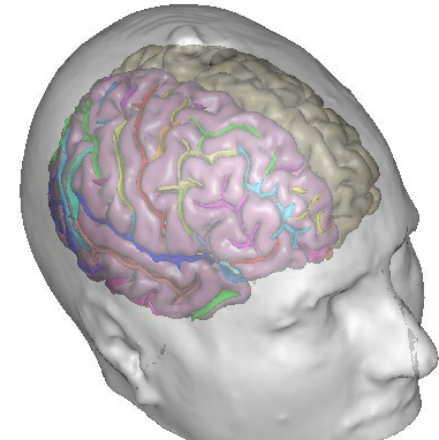
BrainVISA toolboxes (1)



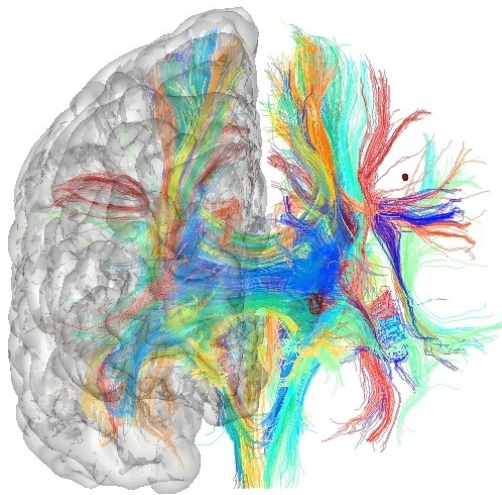
multimodal interactive
visualization



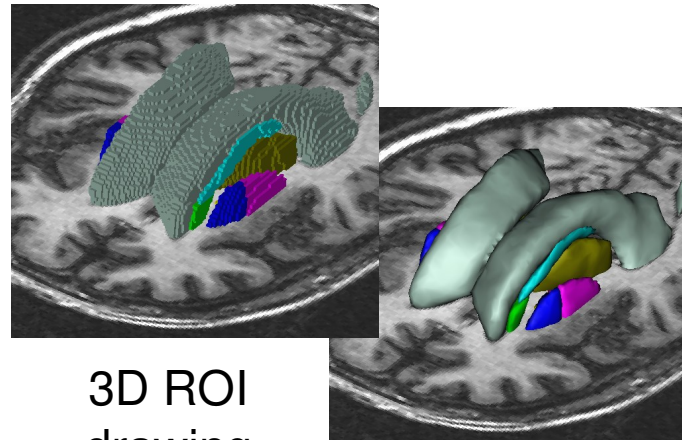
surface analysis



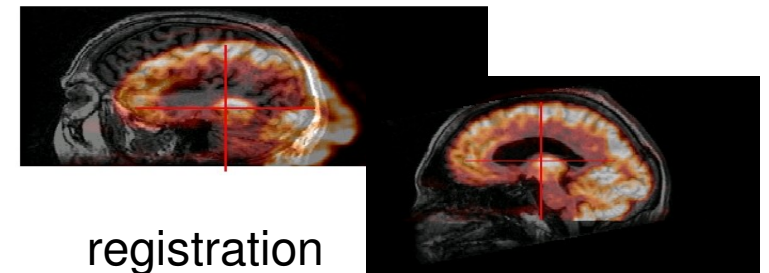
anatomy segmentation
and sulci identification



DTI analysis and
fiber tracking

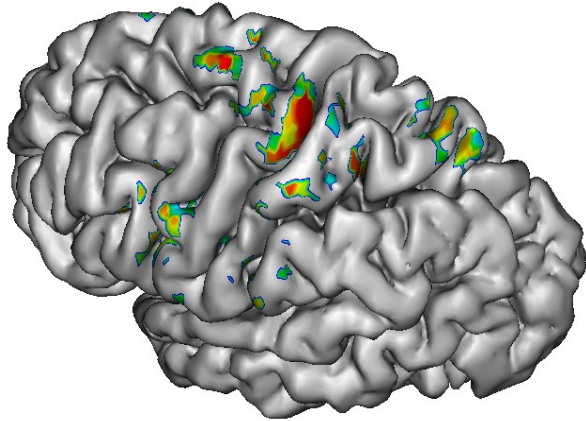


3D ROI
drawing

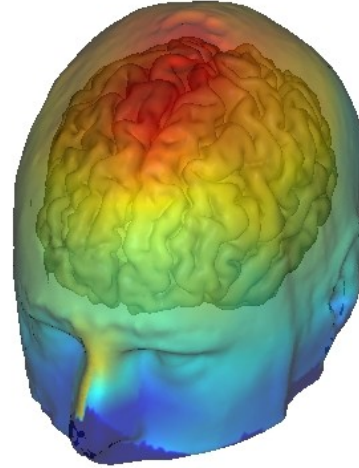


registration

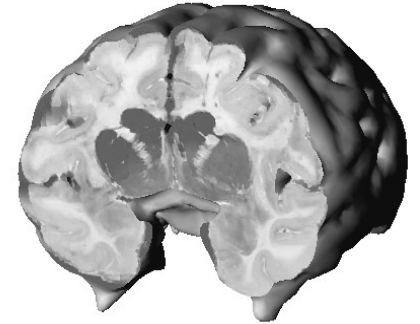
BrainVISA toolboxes (2)



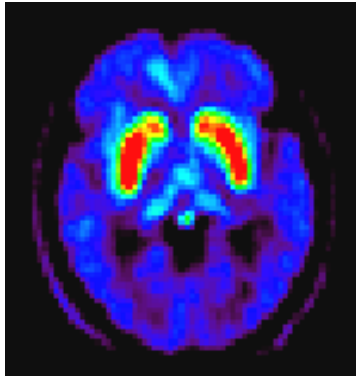
functional MRI



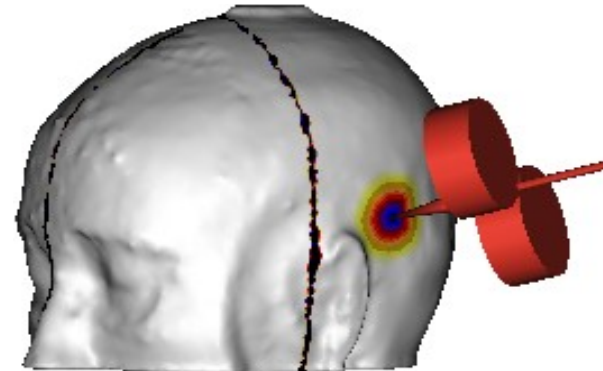
MEG / EEG



histology



nuclear imaging



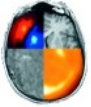
TMS

BrainVISA web site: <http://brainvisa.info>


BrainVISA/Anatomist Home Page - Konqueror

Document Édition Affichage Aller Signets Outils Configuration Fenêtre Aide


URL : <http://brainvisa.info/>



BrainVISA / Anatomist


(français )

[BRAINVISA](#) [ANATOMIST](#) [NEWS](#) [DOWNLOAD](#) [PUBLICATIONS](#) [FAQ](#) [CONTACT](#) [FORUM](#)



BrainVISA is a software, which embodies an image processing factory. A simple control panel allows the user to trigger some sequences of treatments on series of images. These treatments are performed by calls to command lines provided by different laboratories. These command lines, hence, are the building blocks on which are built the assembly lines of the factory.

BrainVISA is distributed with a toolbox of building blocks dedicated to the segmentation of T1-weighted MR images. The product of the main assembly line made up from this toolbox is the following: grey/white classification for Voxel Based Morphometry, Meshes of each hemisphere surface for visualization purpose, Spherical meshes of each hemisphere white matter surface, a graph of the cortical folds, a labeling of the cortical folds according to a nomenclature of the main sulci:



A glimpse of the package content is proposed in [BrainVISA help pages](#).
[About BrainVISA](#).

► *Anatomist* is a visualization software, which main originality is a generic module dedicated to structural