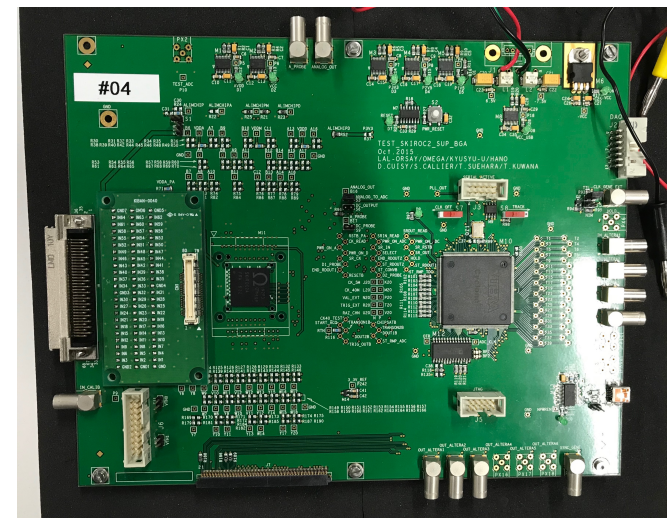


# Study of Retriggers: Status Report

## Verification of retriggers using SKIROC2A test board

- Without sensor, retriggers are not found.
- With PSD sensor,
  - there are many dead channels (more than half) and it's difficult to distinguish retriggers.
  - preamp become strange.
- To Do:
  - ❑ Investigation of the cause of dead channel
  - ❑ Injection from the sensor side
  - ❑ (Create new sensor board)
  - ❑ Proving of GND or Vref if retriggers occur.



backup

file name	Triggered	Empty	Retriggers	Induction	Normal	FullISCA
20200605_sk04_th210_noinj_pp_nosensor_0.root	15000	920	6	3	14074	1000
20200605_sk04_th220_noinj_pp_100V_mask_31_52_53_0.root	14731	924	4	2	13803	907
20200605_sk04_th230_inj2_pp_nosensor_0.root	15000	779	0	0	14221	1000
20200605_sk04_th230_noinj_mask_31_52_53_100V_3.root	15000	851	227	87	13922	1000
20200605_sk04_th250_inj2_100V_2.root	15000	757	58	27	14185	1000
20200605_sk04_th250_inj2_nosensor_1.root	15000	760	0	0	14240	1000
20200605_sk04_th250_inj2_pp_100V_test_0.root	15000	681	8	4	14311	1000
20200605_sk04_th300_inj2_100V_1.root	15000	608	4	1	14388	1000
20200610_sk04_th220_noinj_100V_mask_31_52_53_0	150000	8891	2182	960	138927	10000
20200610_sk04_th230_noinj_100V_mask_31_52_53_0	48705	3034	50	22	45621	38

2020/6/16

Yu Kato