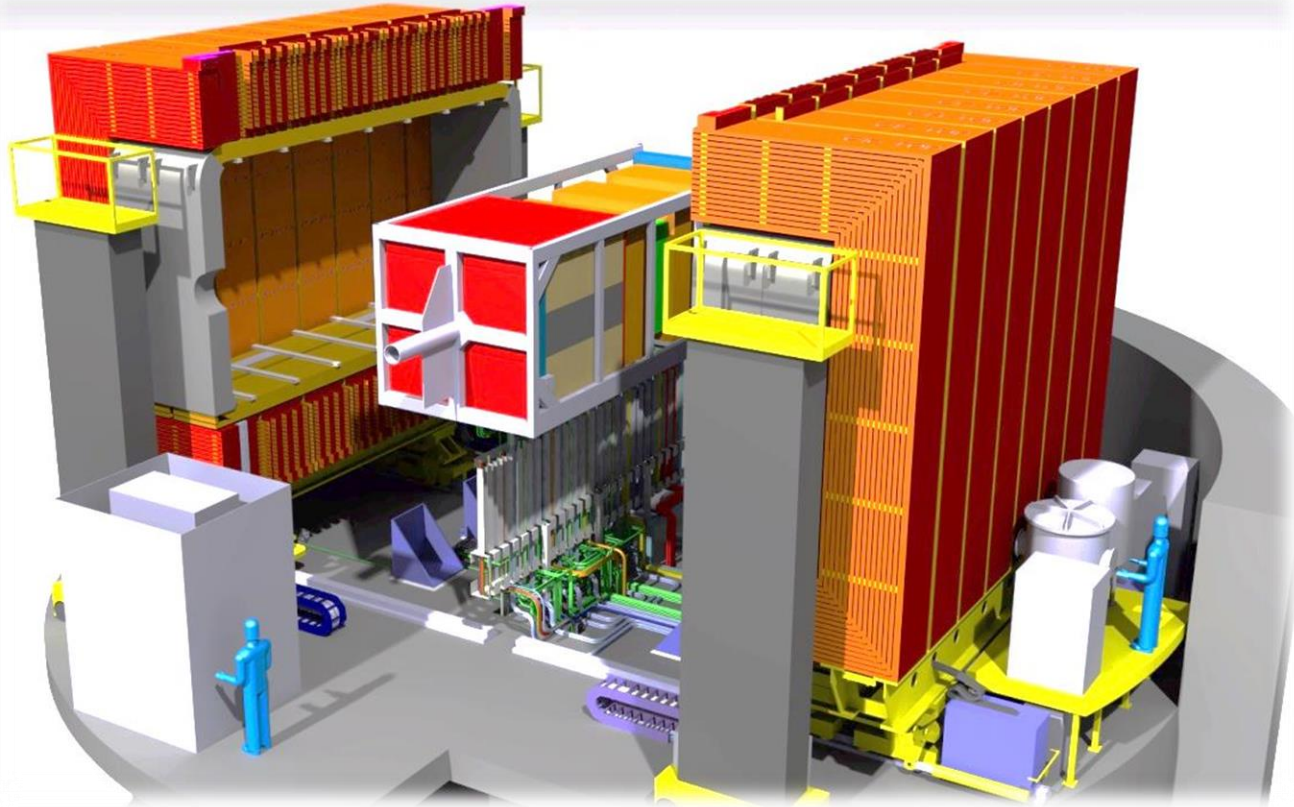
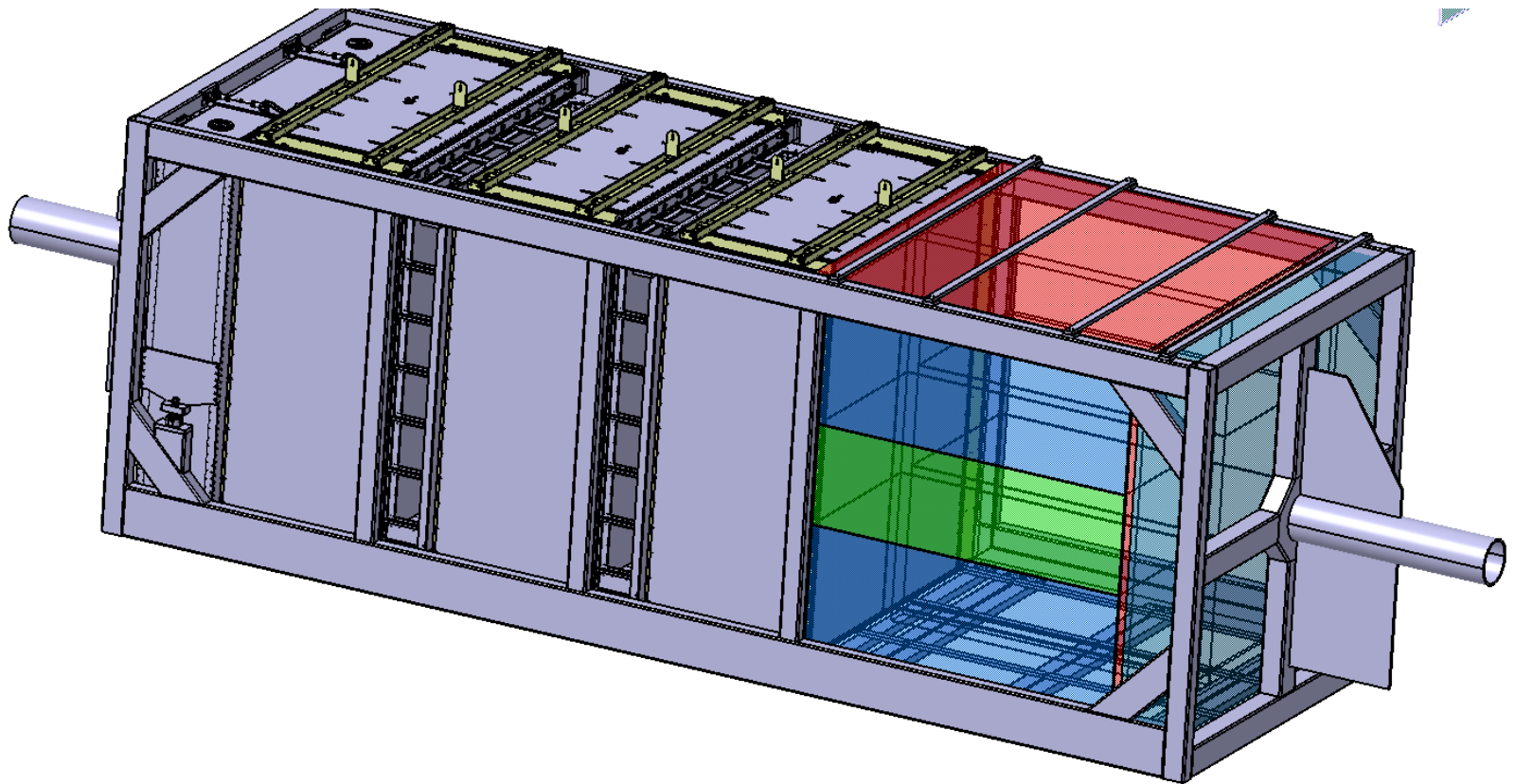


# Contribution du LPNHE: mécanique



William CERIA

# Initialement envisagé

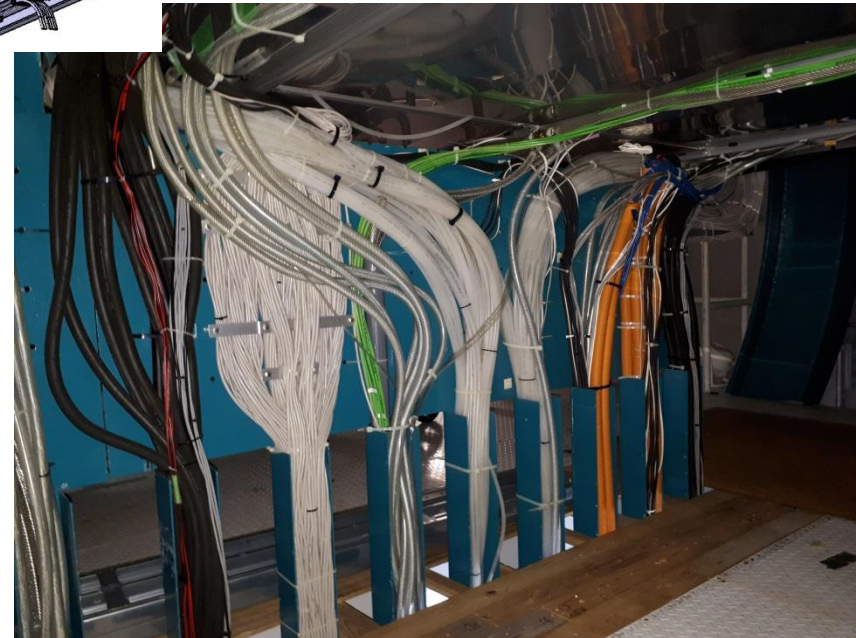
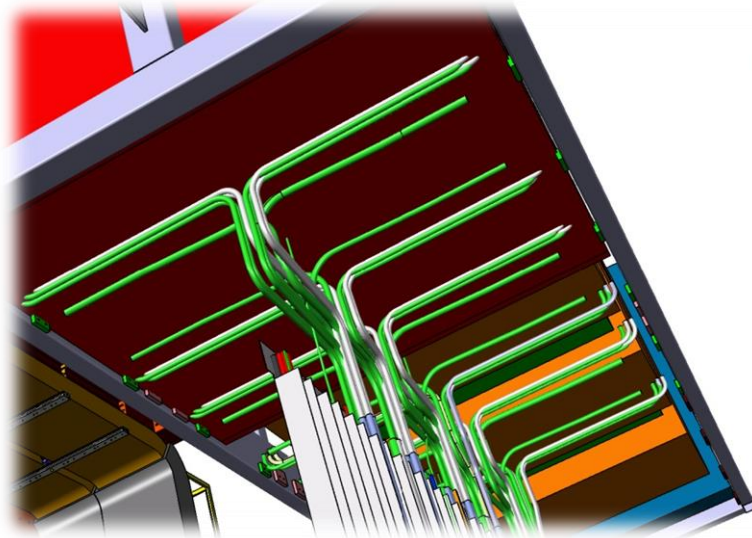
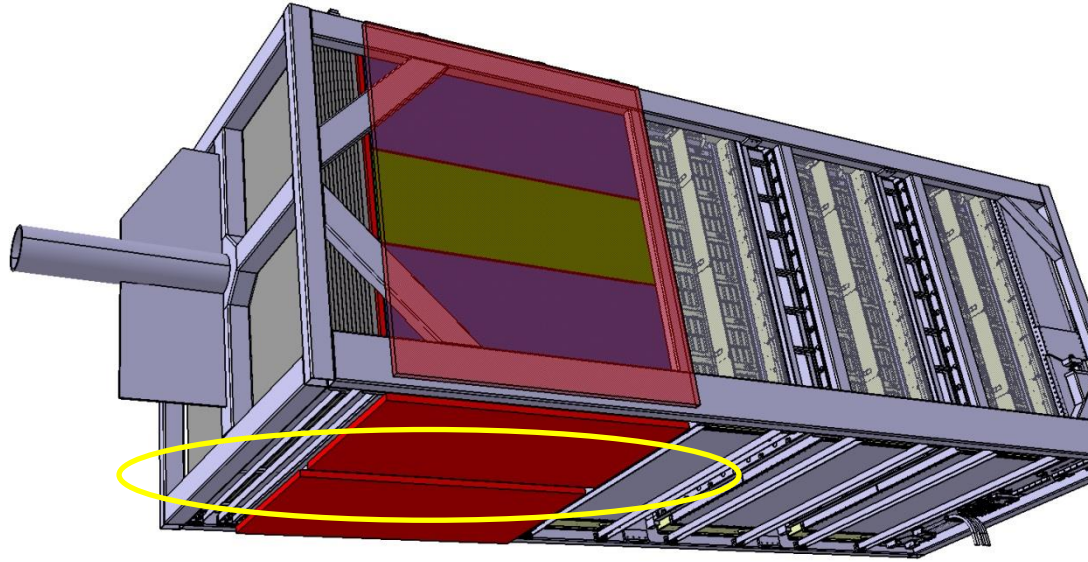


# Les installations



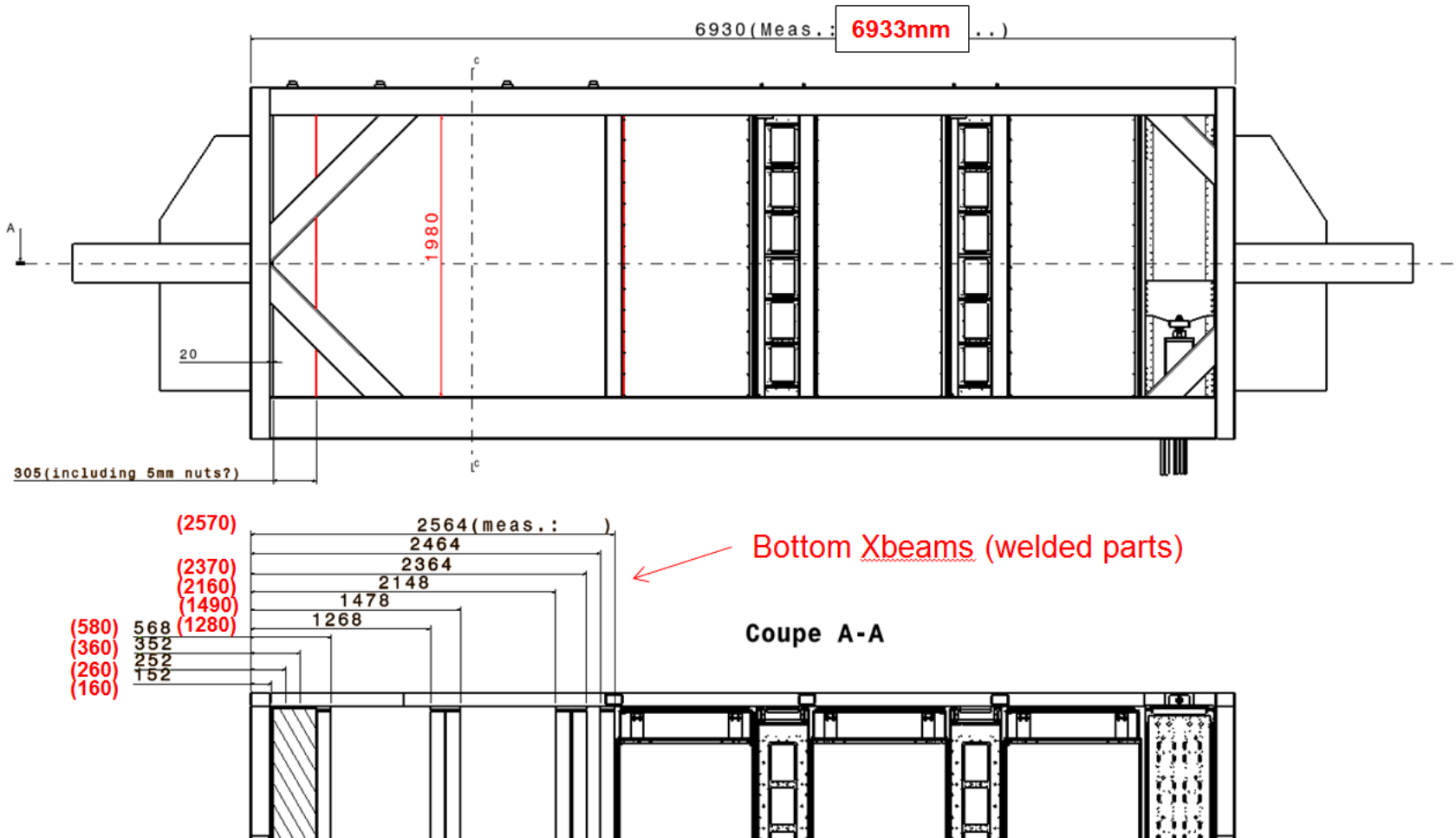


# Les Services

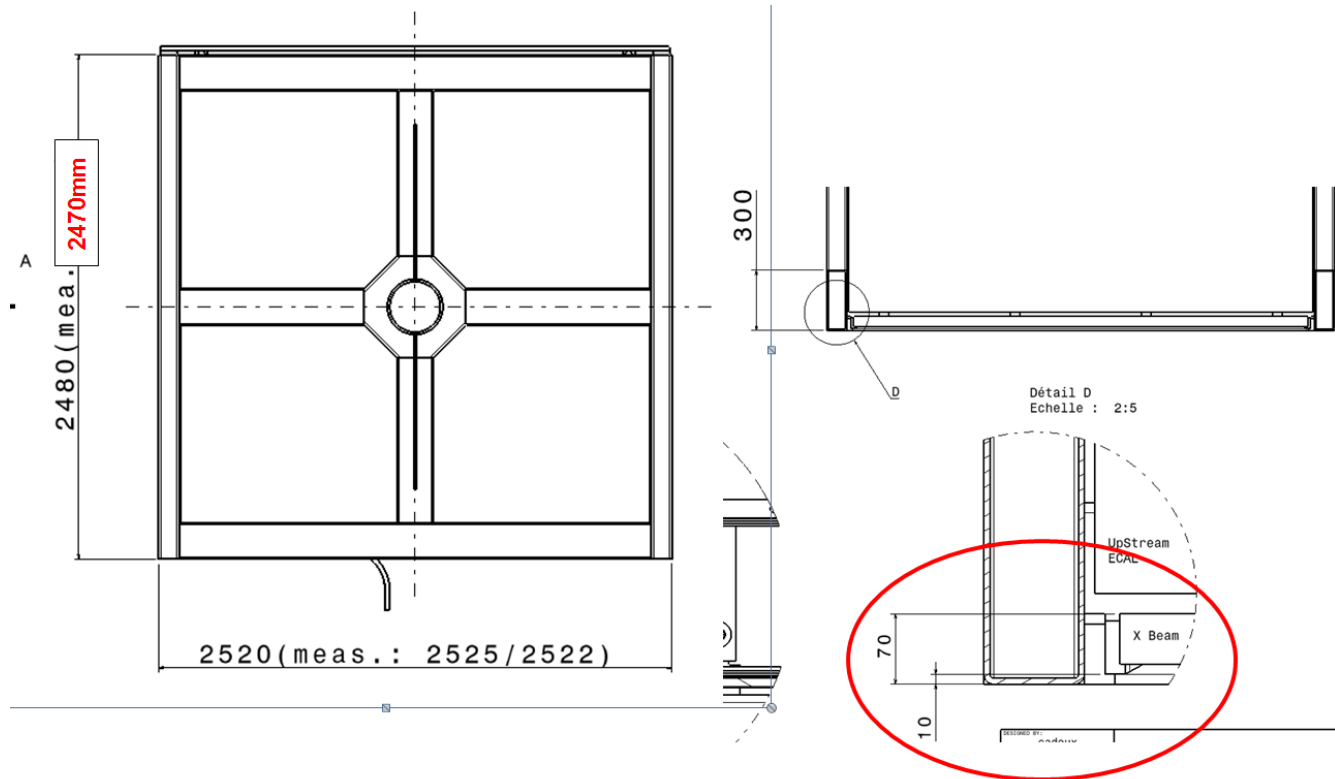


# Les mesures

Some close ups on relevant parts



# Les mesures

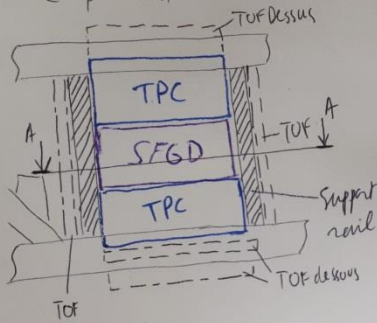


We measured **80mm** from POD to Basket bottom side

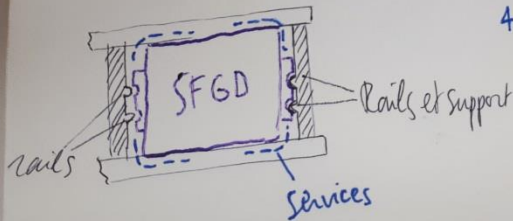
# Les Idées et Questionnements

## Solution 1 "Rails"

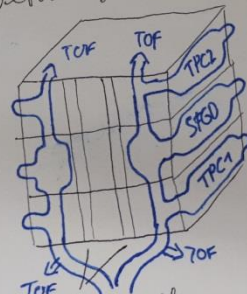
Empilement



A-A

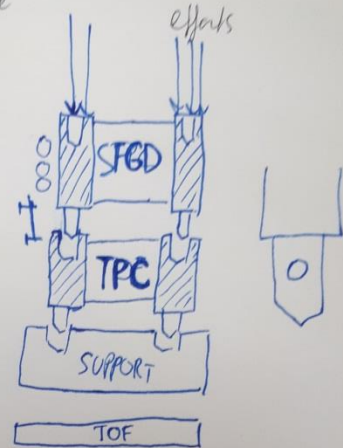
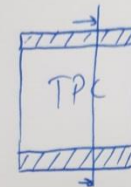


Détail Services

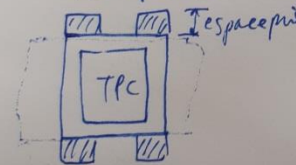


4 entrées pour les services

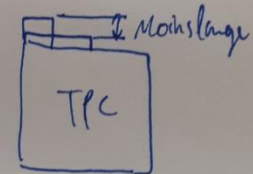
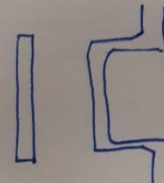
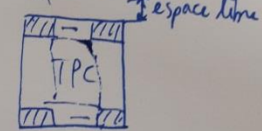
## Solution 2 "Pontage"



Non optimisé



Optimisé



# Orientations

- Empilements des détecteurs a priori la solution privilégié et fixation des détecteurs sur un support de manutention .
- Le SFDG peut être contraint par la nouvelle enveloppe a déterminer.
- Question sur le cheminement des câbles et des faces d'entrées des détecteurs.