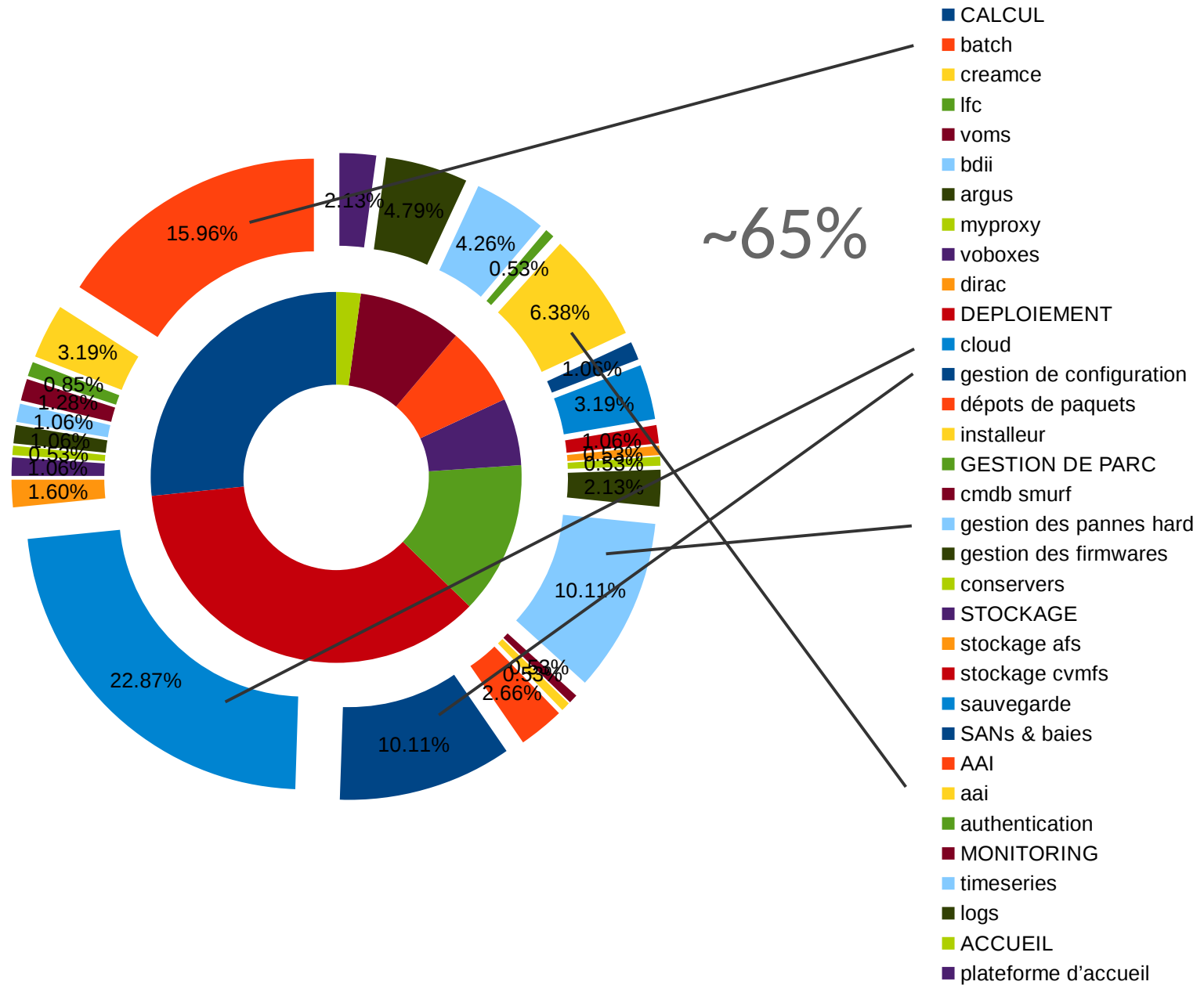


systeme@cc

'17 and '18 activities report

Feb 2018



Deployment

Cloud

- neutron migration
- ceph/cinder integration
- manila testings
- Vmware decommissioning (97%)

Configuration management

- puppet 4 migration

Package repositories

- complete refactoring with Pulp integration
- coloss/CI integration : automated package builds (GPFS, ccautofs...)

Monitoring

Coloss

- upgrade to ES, Kibana 5
- production for Grafana timeseries vs Smurf

AAI

IPA

- FreeIPA integration has started

Computing

Batch

- HTCondor production integration

Grid middlewares

- DIRAC user's workshop organisation in may

Deployment

Cloud

- IFB integration
- Pike/Queens upgrade
- redesign and replace instances backend storages (internal & public cloud)
- manila

Configuration management

- changes management (canary deployment)
- Puppet 5
- delegate some release privileges to services managers

Park management

Hardware maintenance

- Integrate some DELL tools automating firmware management

Monitoring

Timeseries

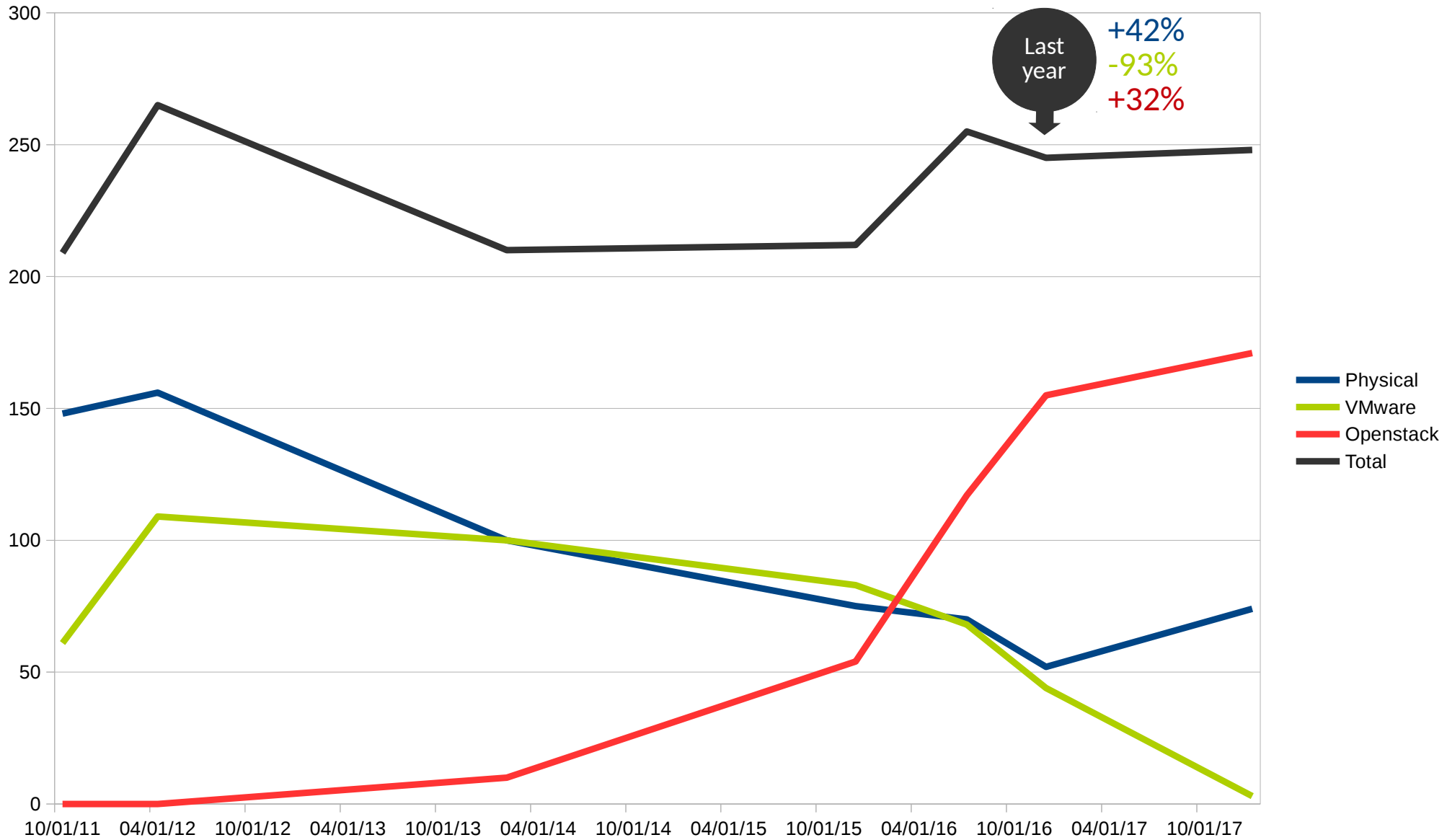
- upgrade ELK 6

AAI

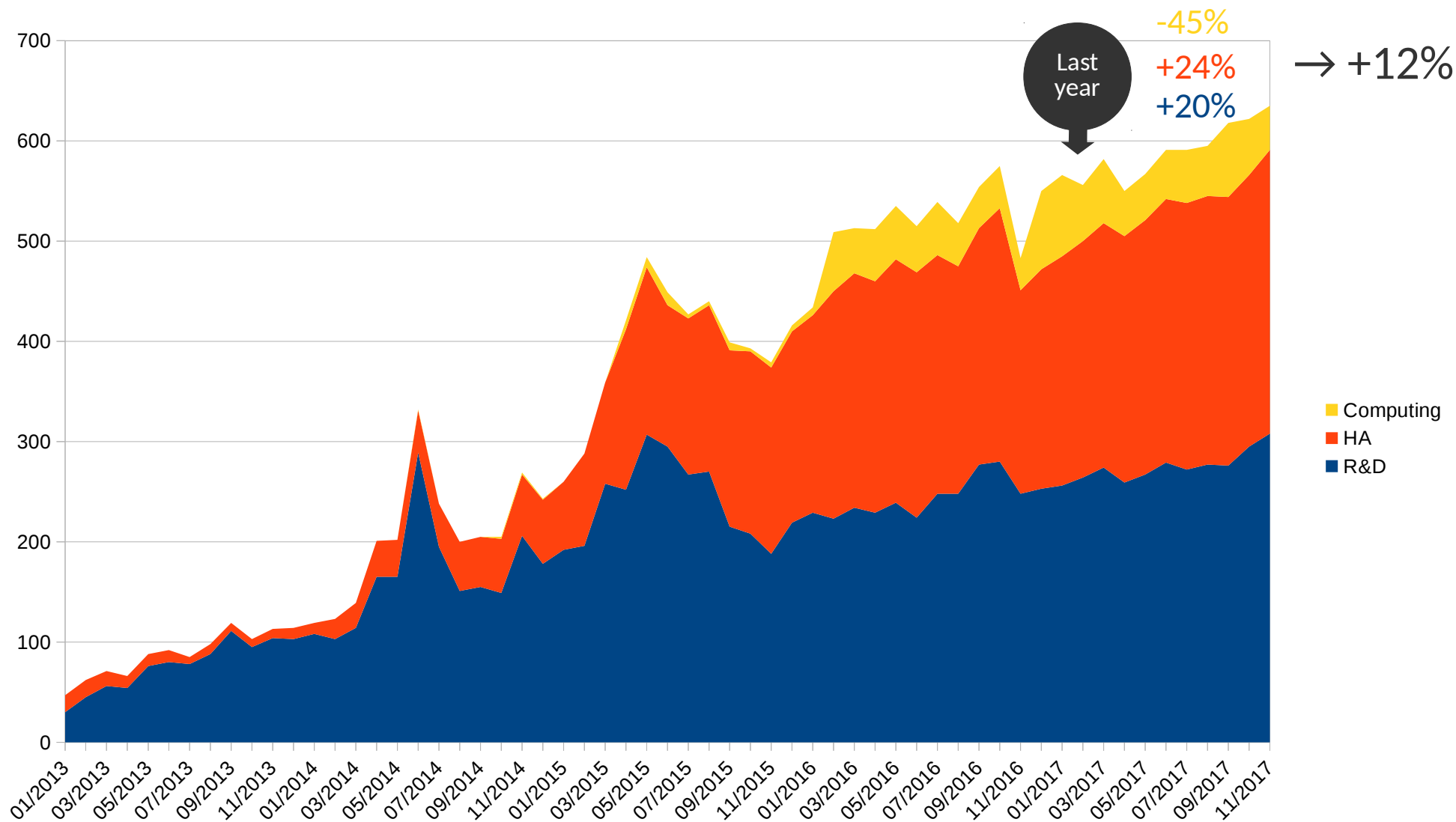
IPA/NIS

- migration NIS → FreeIPA (60%)

Core services deployment



Cloud overall usage



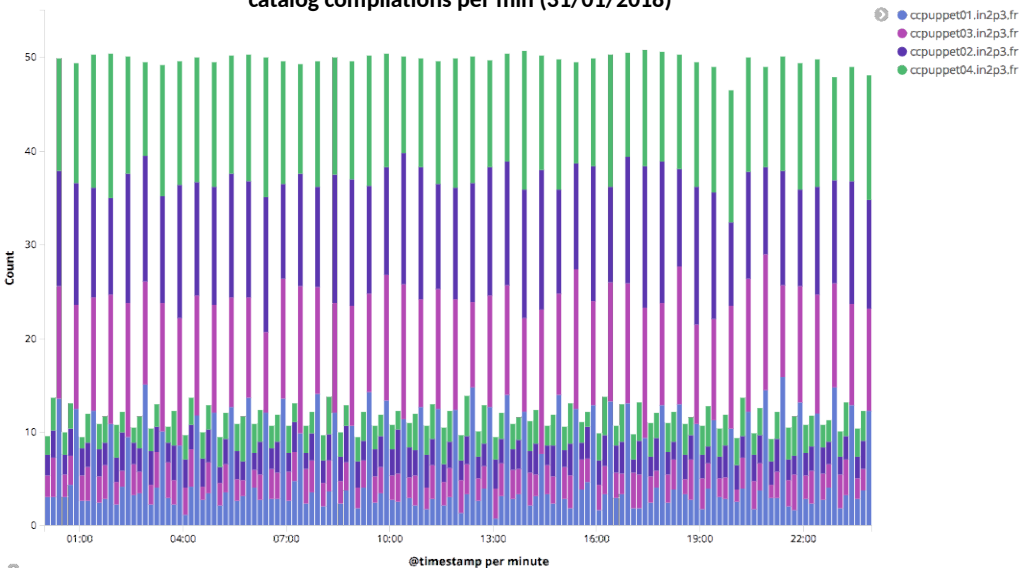
Projects : 54 (+8%)
Users : 150 (+22%)
Hosts : 76 (-5%)
Aggregates : 24 (+50%)

Configuration management (Puppet)

Platform

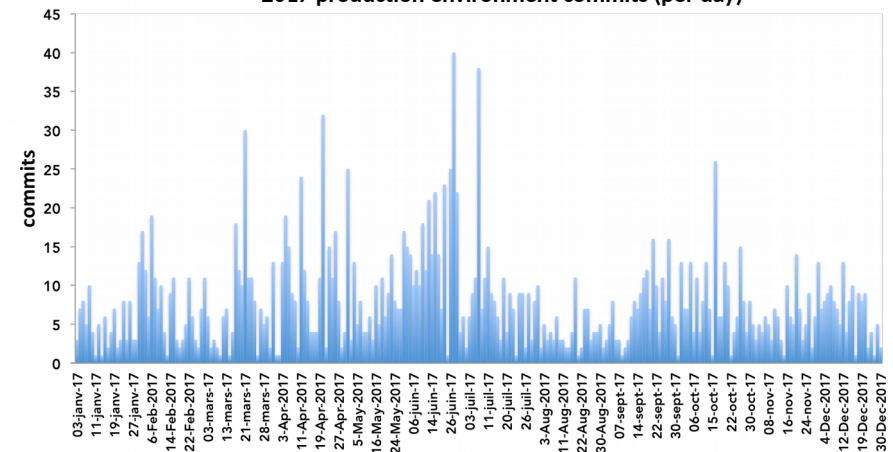
- 5 puppet servers
- 1600 clients, ~1 pass / 30 min

catalog compilations per min (31/01/2018)

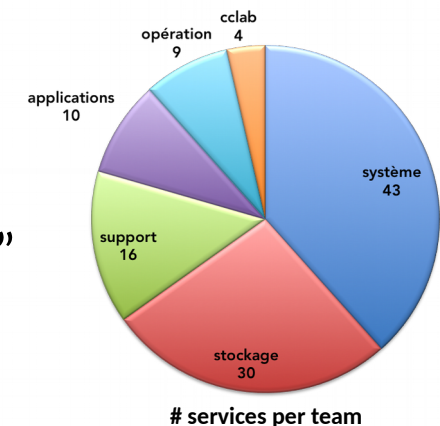


259 configuration scopes (environnements)

2017 production environment commits (per day)



CC dissemination 112 production “services”



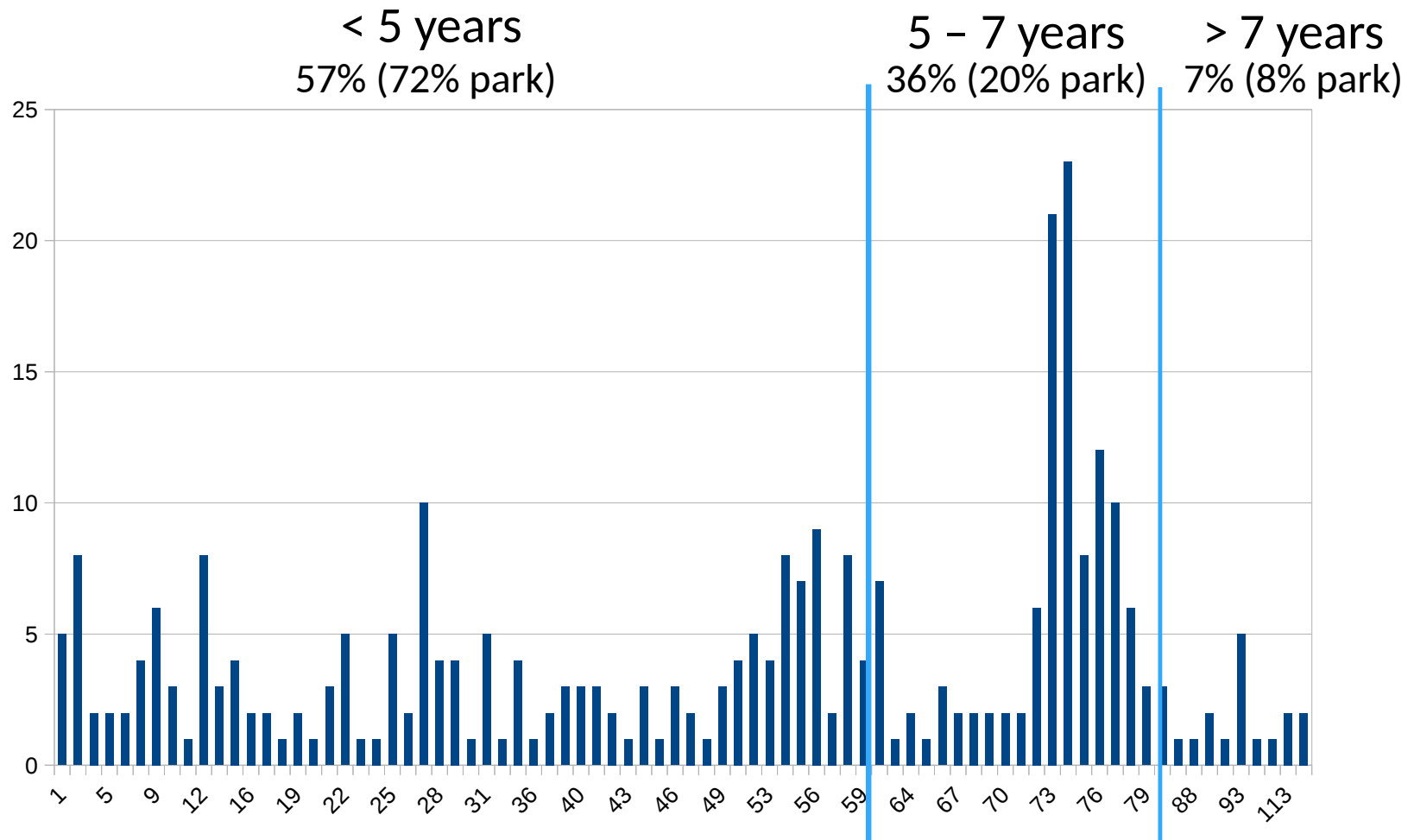
Public code

- 9 modules developed by CC-IN2P3
- 20 public modules contributed

puppet modules in production

modules	production		total	
CC	120		146	
	84 site	36 technical	100 site	46 technical
Puppet forge	58		107	
other (GitHub...)	16		51	

Hardware failures distribution over commissioning

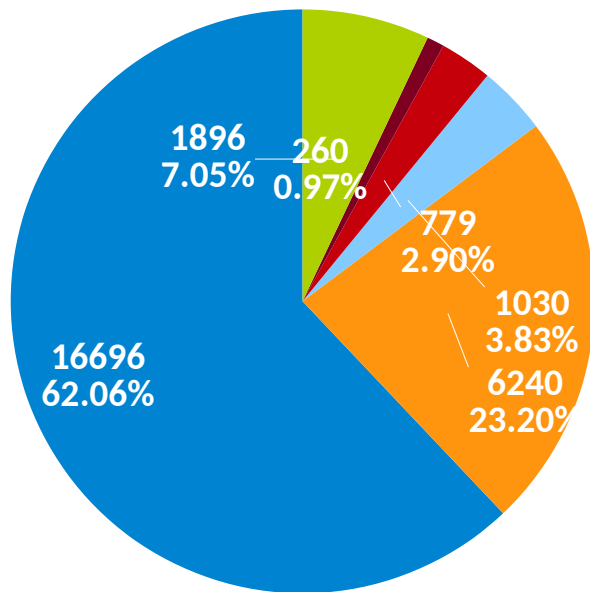


280 incidents → ~0.76 incidents per day
79% treatment automated through Dell APIs
2.2 more incidents between 5 and 7 years

Computing costs

Computing power HS06/Ghz/core	73.86 → 82.6 (+11.83%)
€/HS06 (hw only)	8.14 → 6.28 (-22.85%) estimated : 6.31
€/HS06 during exploitation	12.91 → 10.70 (-17.12%)
W/HS06	0.85 → 0.73 (-14.12%)

E5-2650 v4 : 2084 HS06 / 26902€



Silver 4114 : 1826 HS06 (-12.38%) / 20133€ (-25.16%)

- host
- energy
- rack
- network
- installation
- licences

