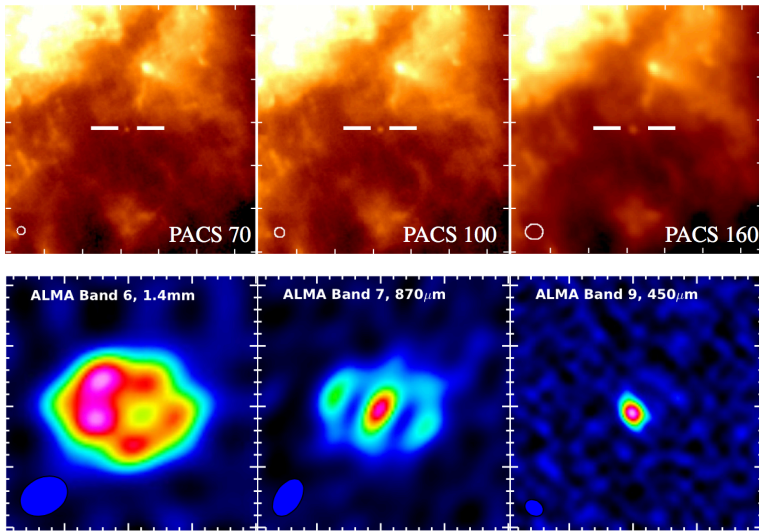
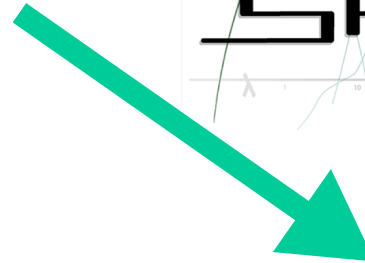
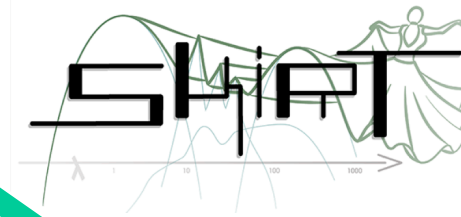


3D radiative transfer simulations of the dusty ejecta of SN 1987A

Maarten Baes



Can we constrain (the evolution of) the geometry, mass and grain types of the dusty ejecta in SN 1987A ?



Very preliminary results
(based on 6D parameter fitting)

- large dust masses (0.5–1 Msun)
- micron-sized dust grains

