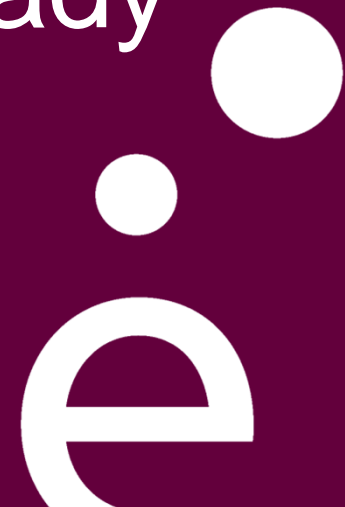


université
PARIS-SACLAY

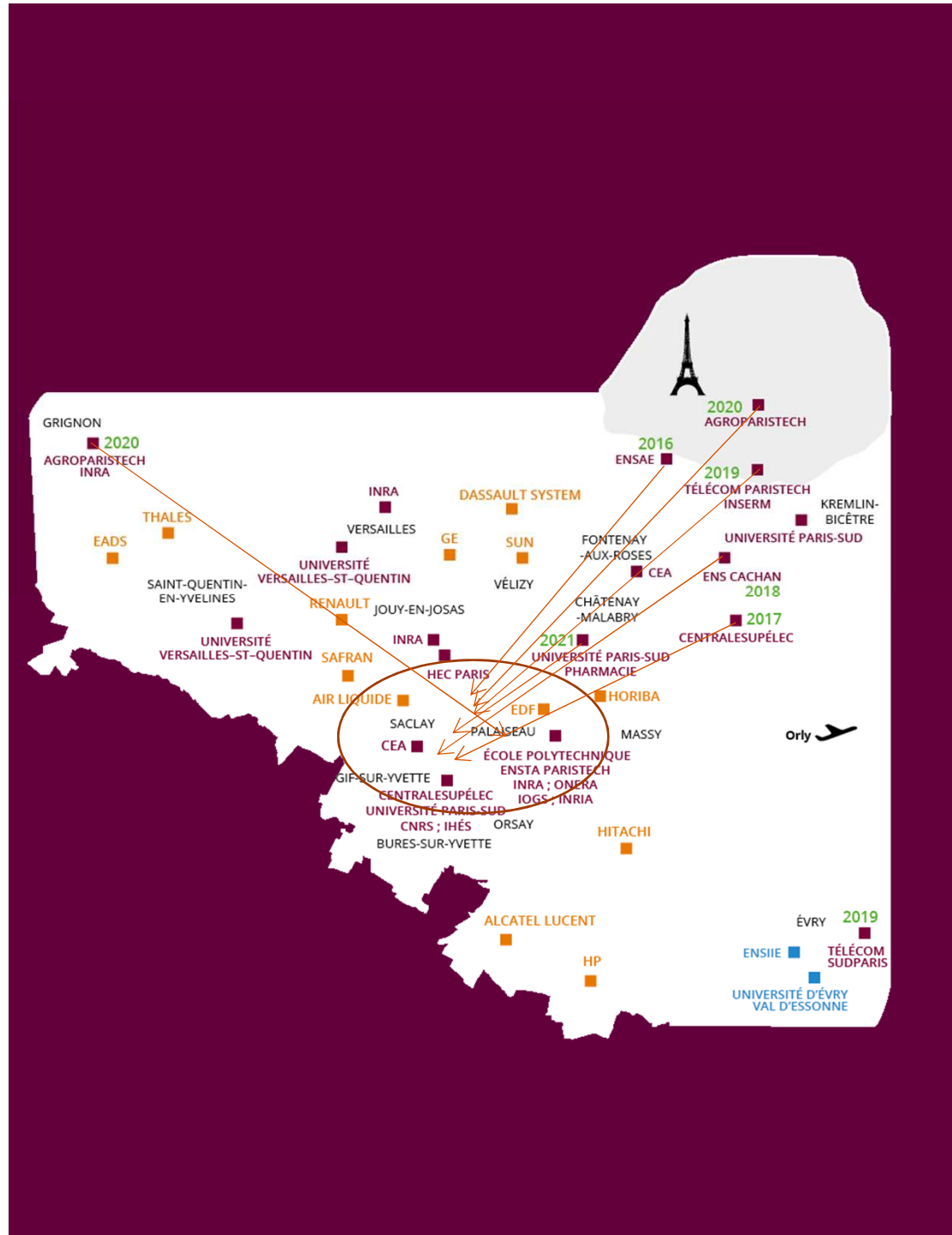
A French promising model
and
several achievements already

Gilles Bloch
President





Wide potential territory



A dense territory getting denser and well surrounded by companies



Already
connected
to Paris and
suburbs...



Improved in 2024

by the Line 18 in
the frame of the
Grand Paris
Express Project

A world class cluster

**Université
Paris-Saclay**

● → **1,5 G€**

Plan campus
(academic buildings)

● → **2,5 G€**

Infrastructures
Paris-Saclay cluster authority

● → **1 G€
+ 10 G€**
Private investment

New Line of the Grand Paris Express
Société du Grand Paris

● → **1,5 G€
+ 4,5 G€**
Greater Paris other lines

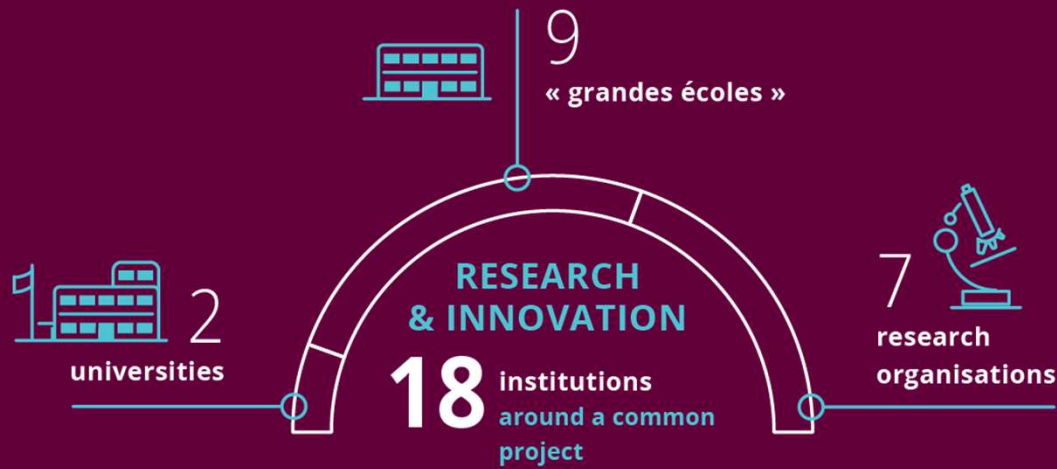
Greater Paris Project as a lever

Jan. 2012: “IDEX Paris-Saclay” project selected with 7 other projects, seed funds of about 32.5 M€/year until June 30, 2016 to:

- Help build a “world class research university”
- Fight today’s fragmentation of French Higher Education system
- Rise excellence in research, training, and innovation

April 2016: “IDEX Paris-Saclay” project extended to end of 2017 to continue its transformation towards an integrated world-class university

Paris-Saclay Initiative for Excellence (IDEX)



18 founding members

building

1 research university

An ensemble of higher education institutions and research organisations that ***keep their brands and means but transform their action from a logic of one-to-one collaborations to a logic of joint strategy***, to confront the major challenges of French higher education and research:

- **Unify some of the best French Higher Education and Research institutions**
 - efficiency, international visibility
- **Face up to the major socio-economic challenges of our time :**
 - interdisciplinary approaches in Research, Education, and Transfer to industry
- **Develop the national and international attractiveness of the Paris-Saclay site**

Towards an
integrated
world-class
research
university
approaching the
top ten

Education



65,000
students



8 schools



48 master programs

300 master tracks

2015-2016 academic year:
~44000 candidates and ~9000 master
students in the mutualized programs



5,000
PhD students

1,500 PhD/year
20 doctoral schools

(support from LABEX, LIDEX,
IDI...)

Key Data on Education



A common Diploma for masters and PhDs starting 2015

Research



10,000
researchers
and professors



10,000
publications/year



15%
of French research



10
departments



300
laboratories

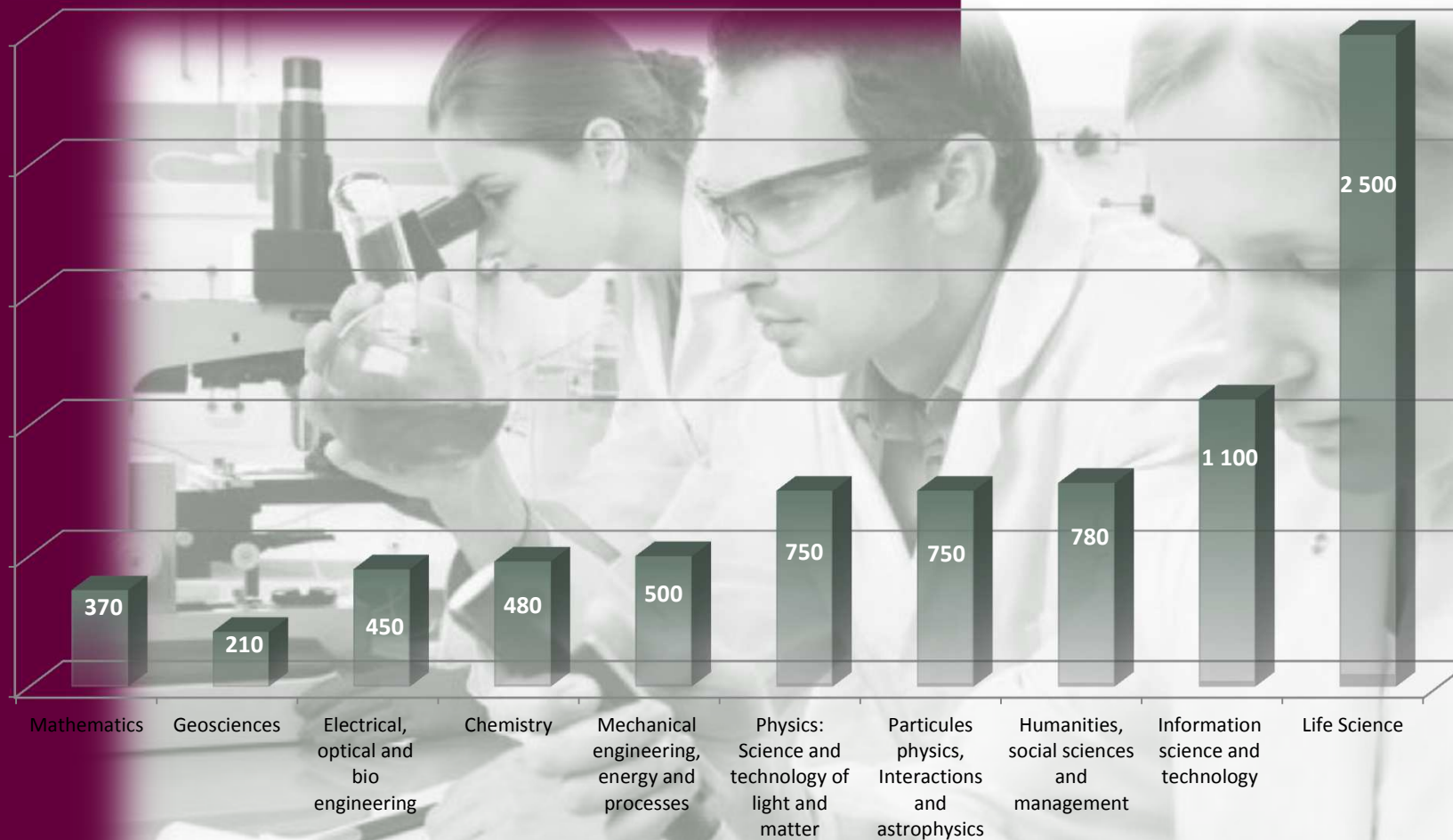
**Major IDEX actions: LABEX, LIDEX,
Chairs**



A common identifier
for all scientific publications
laboratory, institution, Université Paris-Saclay, address

Key Data on Research

Scientific staff (FTE) inside 300 laboratories



Physics of the
two infinites

Physics of
Light and
Matter

Electrical &
Optical
Engineering

Mechanical &
Chemical &
Energy
Engineering

Information
Science &
Technology

Mathematics

Chemistry

Geosciences
& Astrophysics

Life Sciences

Humanities &
Social
Sciences

10
departements
to coordinate the
research effort

Biodiversity, Agroecosystems, Society, Climate

Research Laboratory on Drugs and Therapeutic
Innovation

Hadamard Mathematics Laboratory

Physics : Atoms, Light, Matter

Saclay Plant Sciences

NanoSaclay

Physics of the 2 Infinities and of the Origins

CHemistry of Multifunctional Molecular
ARchitectures and MATerials

Laboratory for Systems and Engineering of Paris
Saclay

Digital Worlds : Distributed Data, Programs, and
Architectures

Economics and Decision Sciences

11
LABEX
focusing
international
grade
research
on disciplines
and socio-
economic
problems

Digital Society
Institute

Interactions
Science Innov.
Society

Food-Health
Project

PS Center for
Data Science

Plant
Phenotyping
Pipeline

NeuroSaclay
Institute

Physics and
Engineering in
Medicine

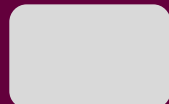
Integrative
Genome
Biology

Nano Design
Platform

PS Inst. for
control and
decision

Optical pulses
for ultrafast
science

Modeling of
Living Systems



=

Research institutes
with team relocation

12

interdisciplinary
“LIDEX”

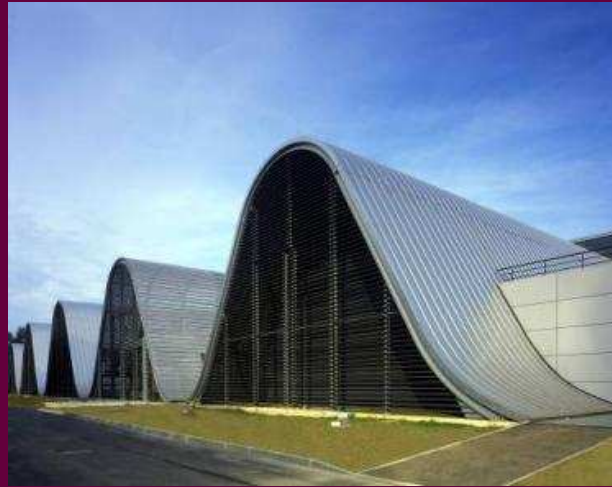
projects

focusing on new
strategic issues

(NeuroSpin)

New building:

- 12000 m²
- 340 staff
- Opening:
2017



NeuroSaclay
Institute

12
interdisciplinary
projects
focusing on new
strategic issues



A
common
brand
to be
endorsed by
each member



Paris-Sud induction day

A common student card



A city campus at the core of the territory



1.7 Mm² planned

1/3 higher education

1/3 students and family housing

1/3 economic development

New buildings and facilities

LAYING-OUT

Support of services and shops nearby

TRANSPORTS

- Accessible via metro lines 14 and 18 by 2023
- Favoring bike and pedestrian traffic

1 student ID to access all services

CATERING FACILITIES

23 000 meals/day

12 restaurants under construction

ACCOMODATION

10 700

2 540 under construction

New campus life present and future



Thank
you