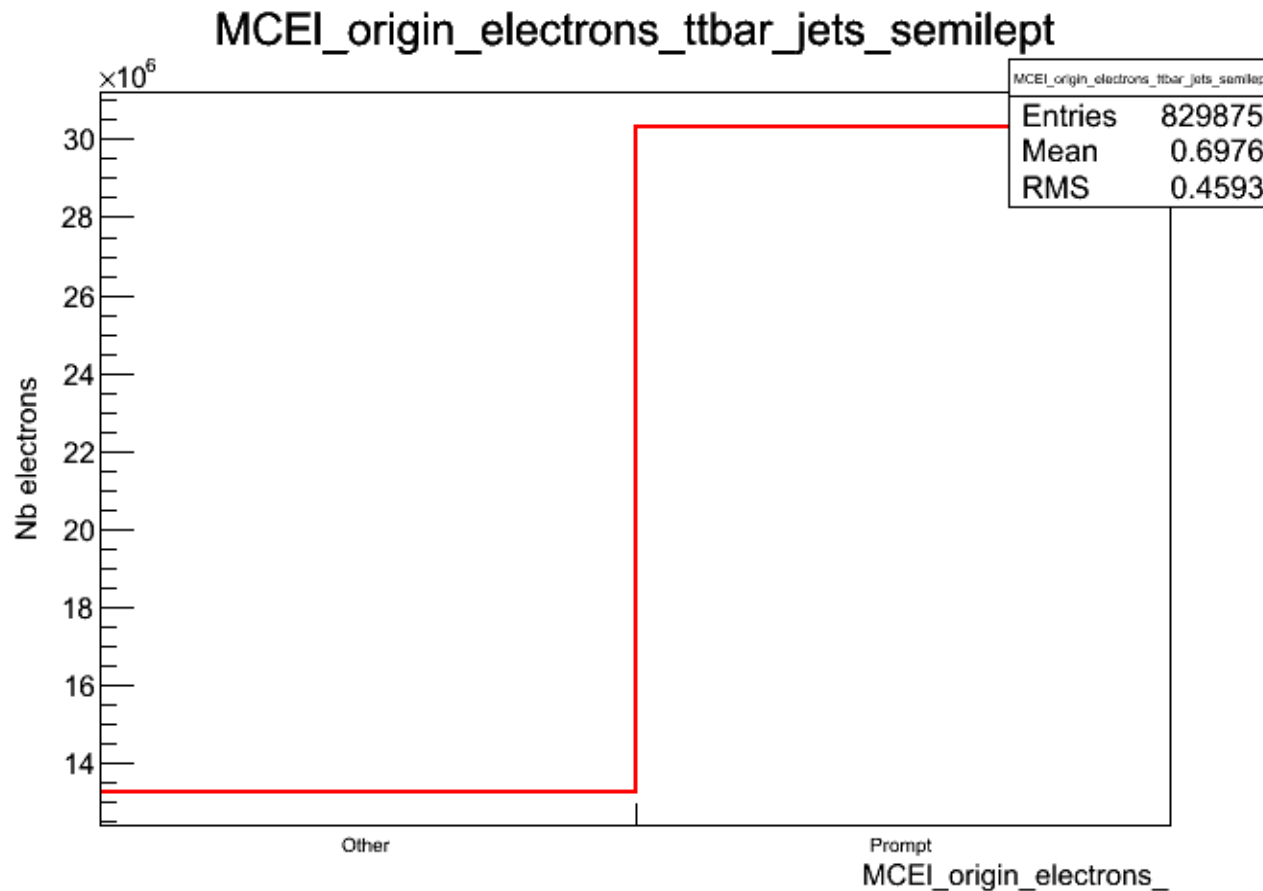


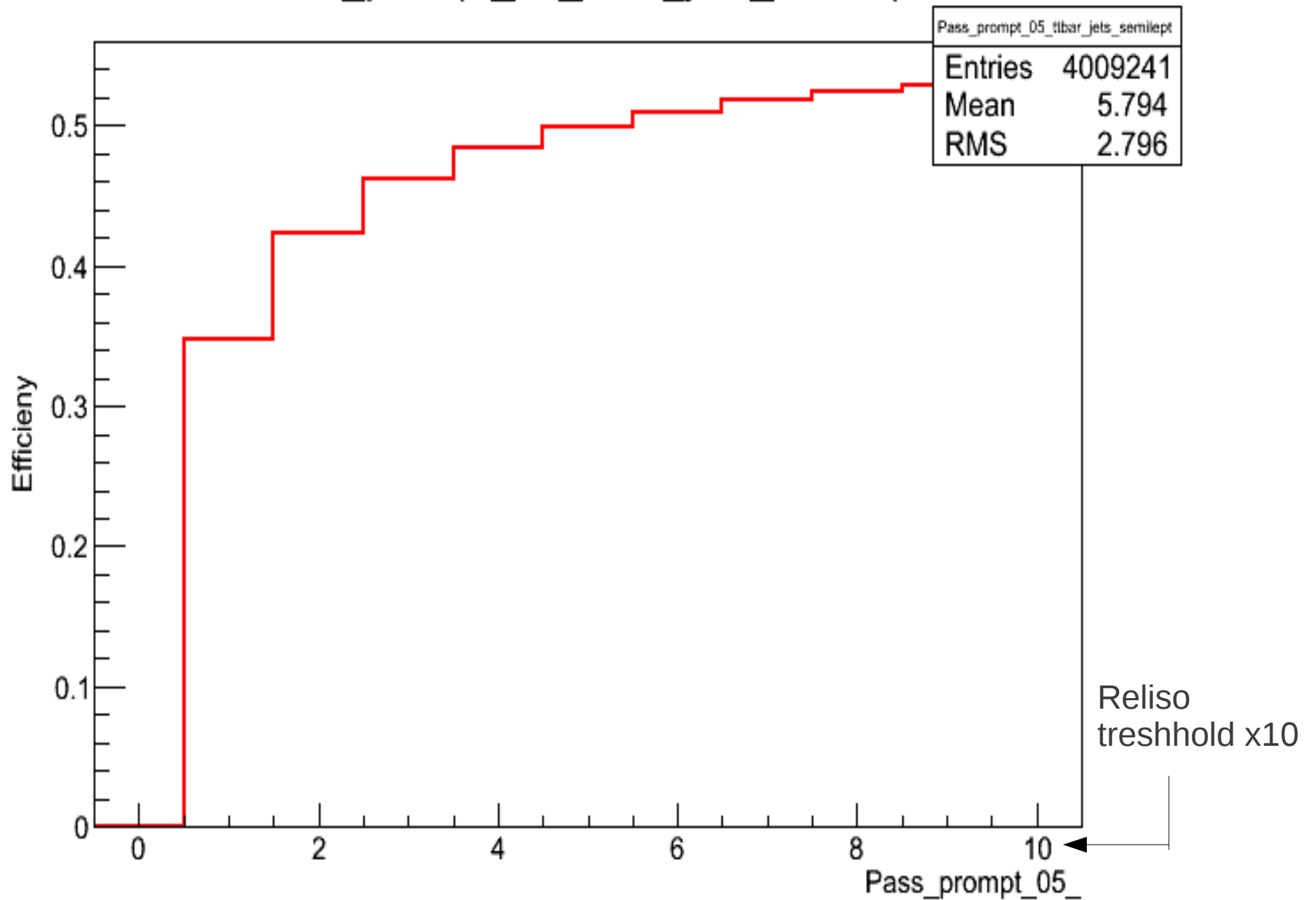
Lepton Isolation with origin from Helperclass:



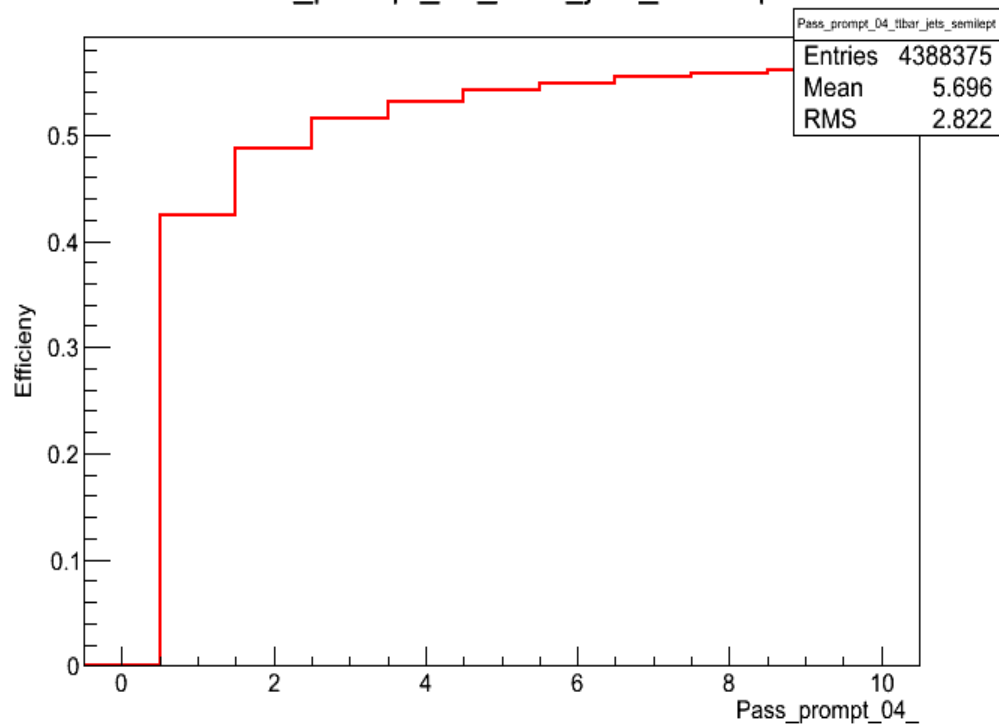
Ratio prompt vs not prompt
stays the same

Prompt: 70%
Not Prompt: 30%

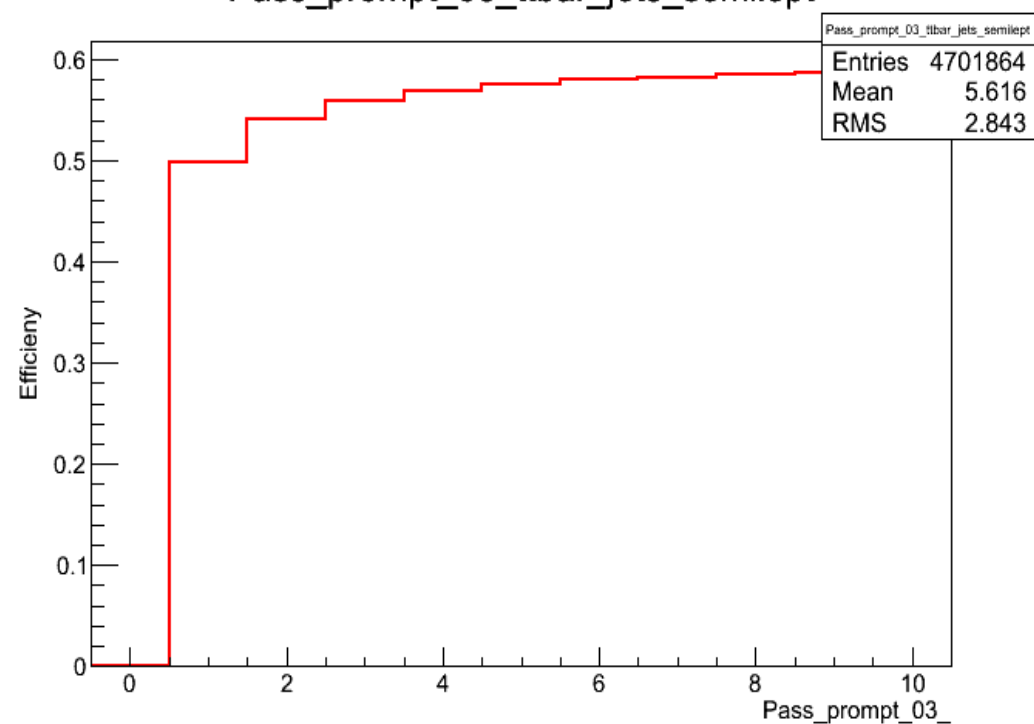
Pass_prompt_05_ttbar_jets_semilept



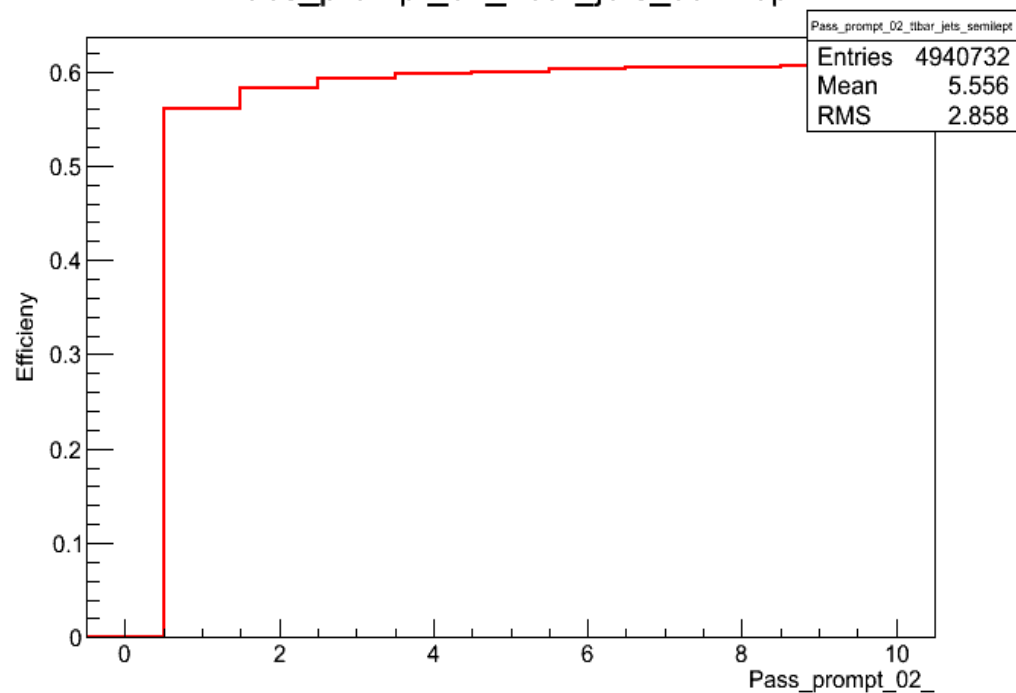
Pass_prompt_04_ttbar_jets_semilept



Pass_prompt_03_ttbar_jets_semilept

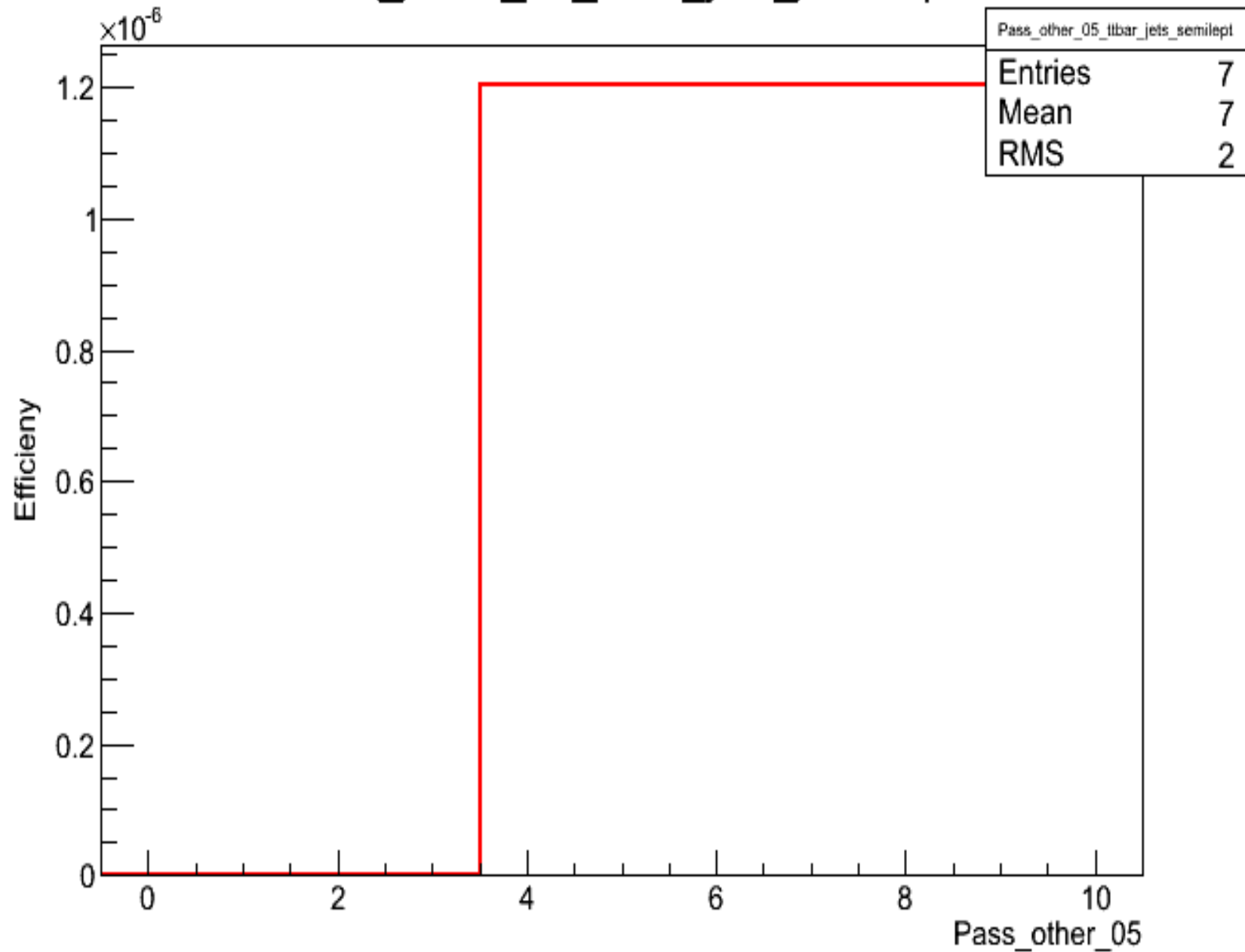


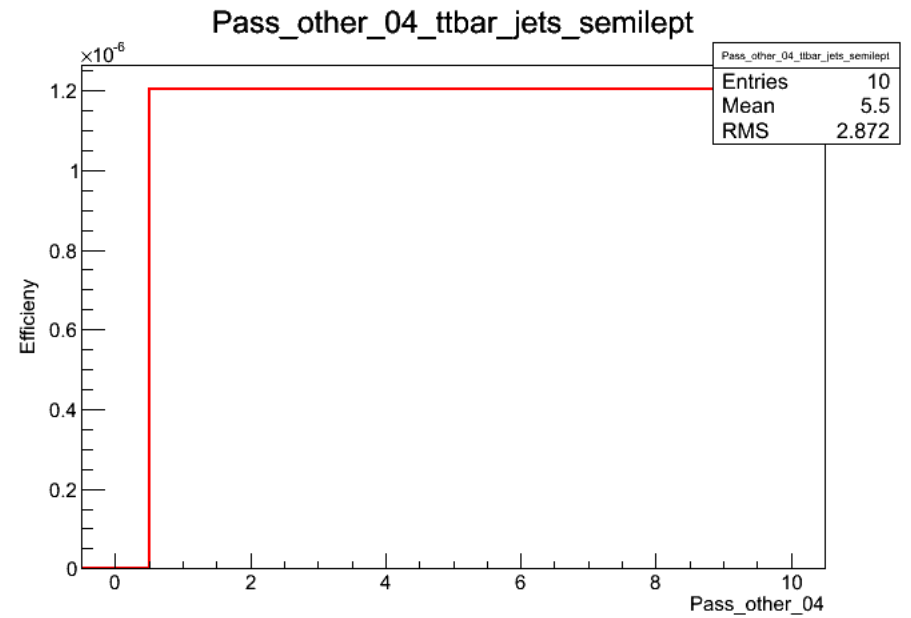
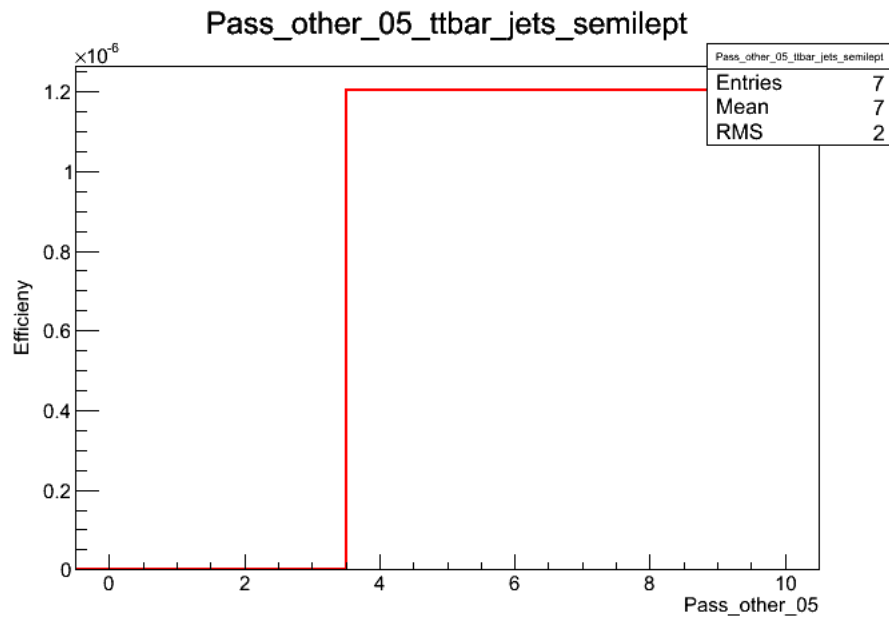
Pass_prompt_02_ttbar_jets_semilept



Efficiency for prompt is fine

Pass_other_05_ttbar_jets_semlept





Efficiencies for other don't make sense since their reliso only starts beyond 1

